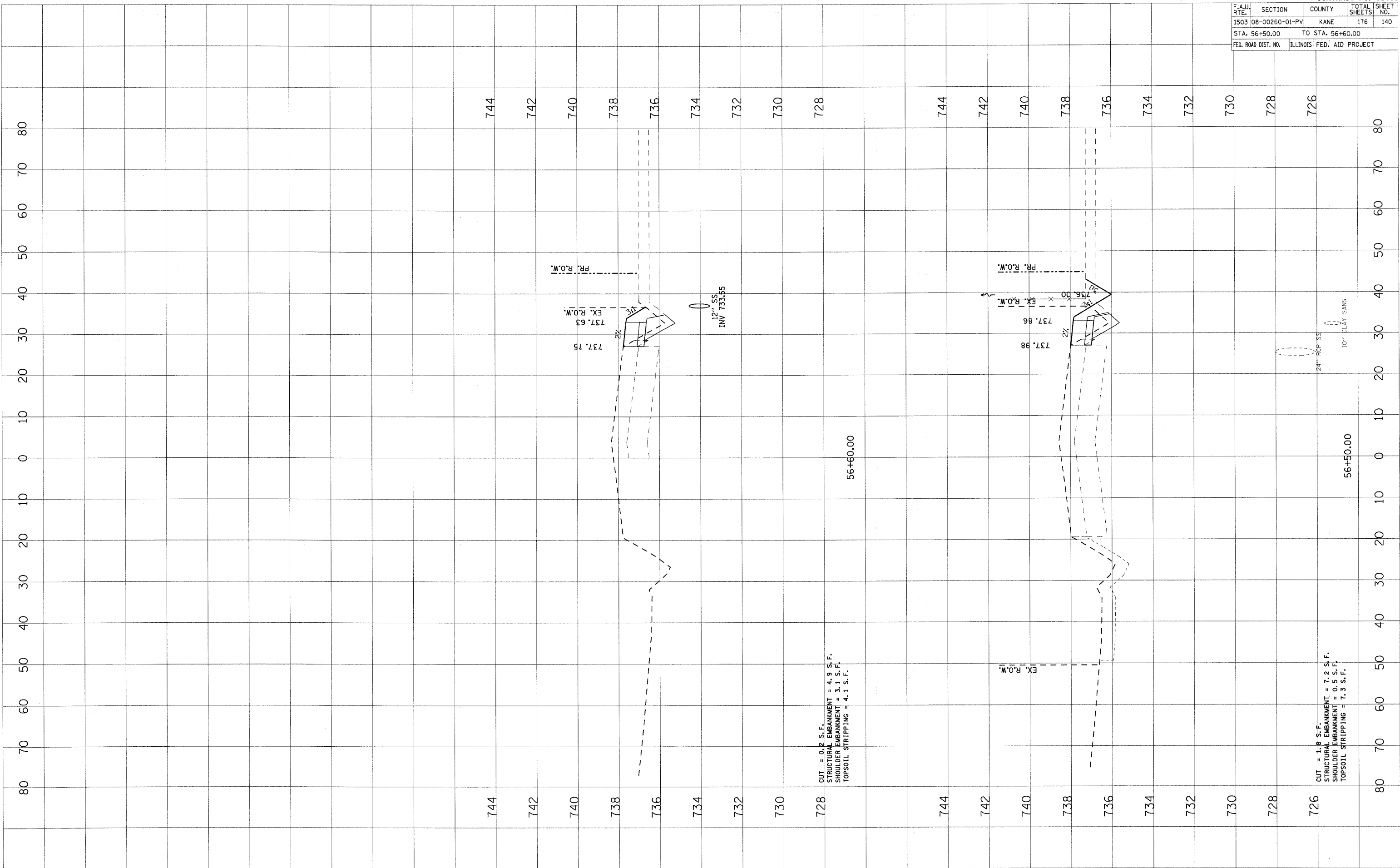


F.A. DIST.	SECTION	COUNTY	TOTAL SHEETS	SHEET NO.
1503	08-00260-01-PV	KANE	176	140
STA. 56+50.00		TO STA. 56+60.00		
FED. ROAD DIST. NO.	ILLINOIS	FED. AID PROJECT		

FINAL SURVEY	BY	DATE
SURVEYED		
PLOTTED		
NOTE BOOK		
AREAS CHECKED		
NO.		

ORIGINAL SURVEY	BY	DATE
SURVEYED		
PLOTTED		
NOTE BOOK		
AREAS CHECKED		
NO.		

PLOT DATE = 1/5/2009
 PLOT SCALE = 1"=40'
 USER NAME = USER



728 CUT = 0.2 S.F.
 STRUCTURAL EMBANKMENT = 4.9 S.F.
 SHOULDER EMBANKMENT = 3.1 S.F.
 TOPSOIL STRIPPING = 4.1 S.F.

726 CUT = 1.8 S.F.
 STRUCTURAL EMBANKMENT = 7.2 S.F.
 SHOULDER EMBANKMENT = 0.5 S.F.
 TOPSOIL STRIPPING = 7.3 S.F.