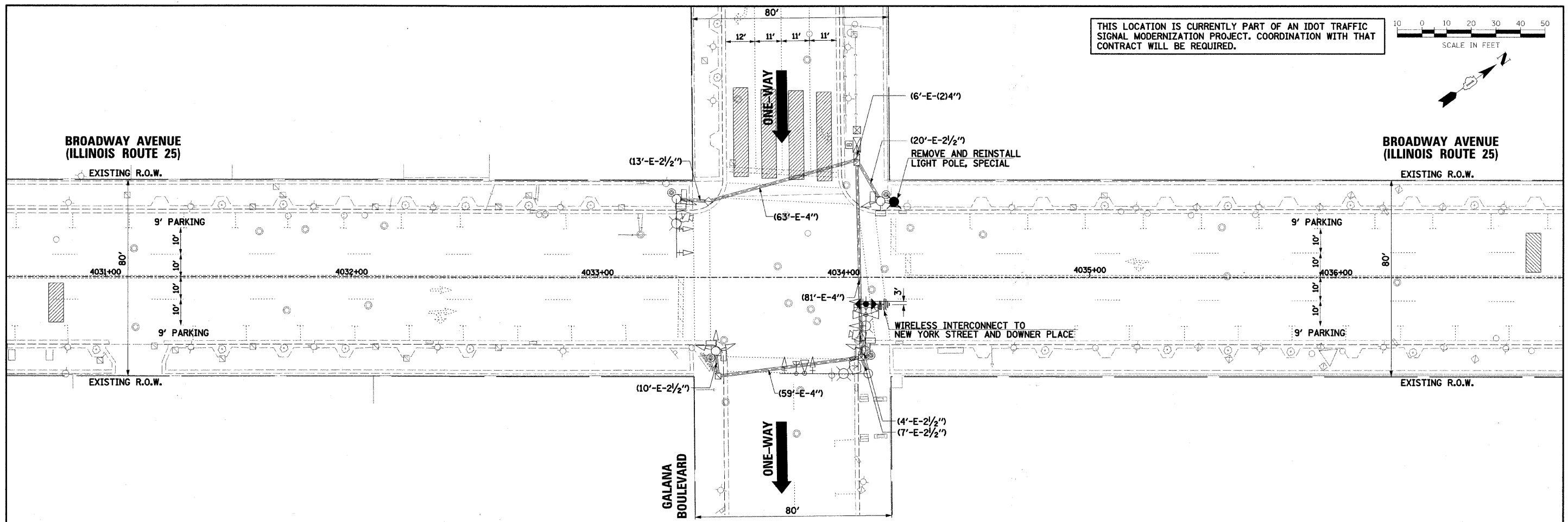


PLAN	DATE
SURVEYED	
ALIGNED	
NOTED	
BY	
NO.	

PROFILE	DATE
SURVEYED	
ALIGNED	
NOTED	
BY	
NO.	



THIS LOCATION IS CURRENTLY PART OF AN IDOT TRAFFIC SIGNAL MODERNIZATION PROJECT. COORDINATION WITH THAT CONTRACT WILL BE REQUIRED.

NOTE:
THE "SYSTEM" ANTENNA SHALL BE MOUNTED ON THE NORTHBOUND MAST ARM, 3' EAST OF THE OUTER 3-SECTION SIGNAL HEAD OR AS DIRECTED BY THE TECHNICIAN INSTALLING THE INTERCONNECT (SEE MOUNTING DETAIL).

TRAFFIC SIGNAL LEGEND

	PROPOSED	EXISTING		PROPOSED	EXISTING
CONTROLLER			DETECTOR LOOP		
SERVICE INSTALLATION			CAST IRON JUNCTION BOX		
SIGNAL HEAD			EMERGENCY VEHICLE LIGHT DETECTOR		
SIGNAL HEAD WITH BACKPLATE			CONFIRMATION BEACON		
SIGNAL HEAD, PEDESTRIAN			SIGNAL HEAD OPTICALLY PROGRAMMED		
SIGNAL POST			CONDUIT SPLICE		
MAST ARM ASSEMBLY AND POLE, STEEL			WOOD POLE		
MAST ARM ASSEMBLY AND POLE, ALUMINUM			RACEWAY FOR MAGNETIC DETECTOR, TYPE I OR TYPE II		
COMBINATION MAST ARM ASSEMBLY AND POLE, STEEL WITH LUMINAIRE			VEHICLE DETECTOR, NON COMPENSATED MAGNETIC TYPE		
UNIT DUCT	UD		RAILROAD CONTROL CABINET		
COMMON TRENCH	CT		TELEPHONE CONNECTION		
HANDHOLE			ILLUMINATED SIGN "NO LEFT TURN"		
HEAVY DUTY HANDHOLE			ILLUMINATED SIGN "NO RIGHT TURN"		
DOUBLE HANDHOLE			UNINTERRUPTABLE POWER SUPPLY		
G.S. CONDUIT IN TRENCH (T) OR PUSHED (P)			VIDEO DETECTION CAMERA		
PEDESTRIAN PUSHBUTTON DETECTOR			VIDEO DETECTION AREA		
PAN/TILT/ZOOM CAMERA			WIRELESS ANTENNA		

FILE NAME #	USER NAME # USER#	DESIGNED -	REVISED -	STATE OF ILLINOIS DEPARTMENT OF TRANSPORTATION	TRAFFIC SIGNAL MODIFICATION PLAN IL ROUTE 25 AT GALENA BOULEVARD	F.A.U. RTE.	SECTION	COUNTY	TOTAL SHEETS	SHEET NO.	
#FILE#		DRAWN <i>BAH</i>	REVISED -			2503	08-00272-00-TL	KANE	40	18	
		CHECKED <i>APS</i>	REVISED -			CONTRACT NO. 63177					
		DATE <i>JAN 16 2009</i>	REVISED -			FED. ROAD DIST. NO. [ILLINOIS] FED. AID PROJECT					