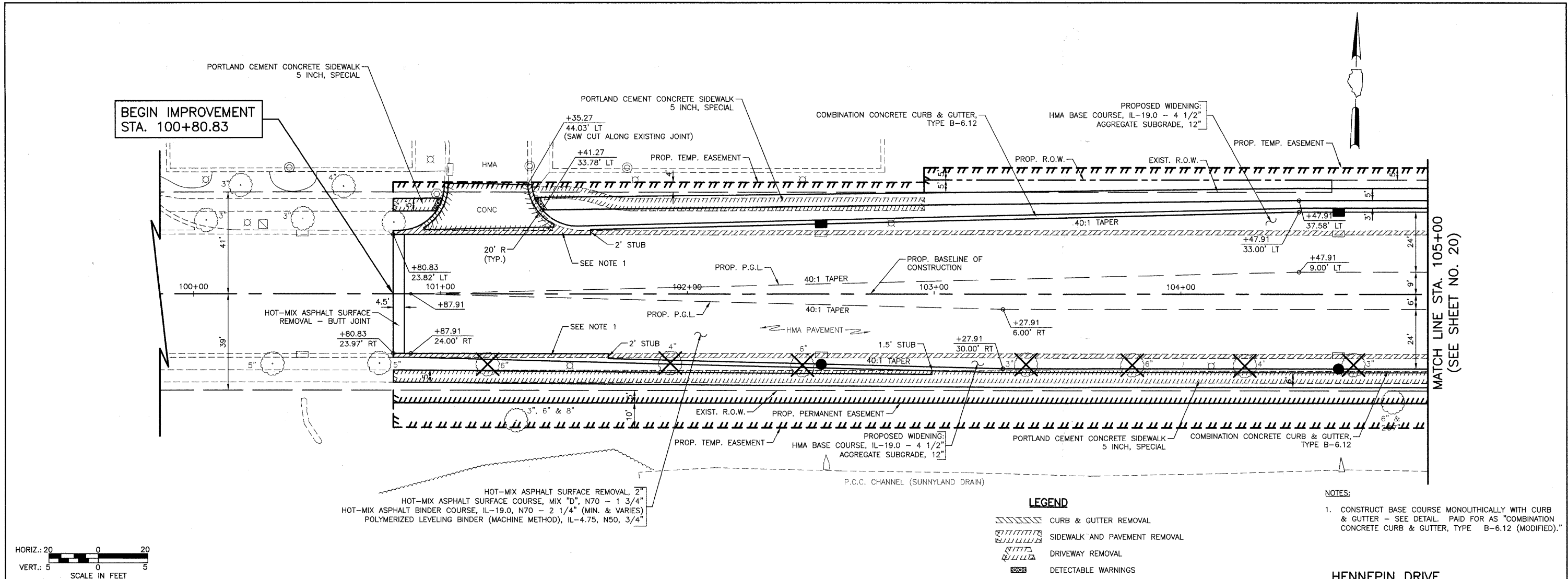


DATE	
BY	
PLAN	
NO.	
DATE	
BY	
PROFILE	
NO.	

DATE	
BY	
PROFILE	
NO.	

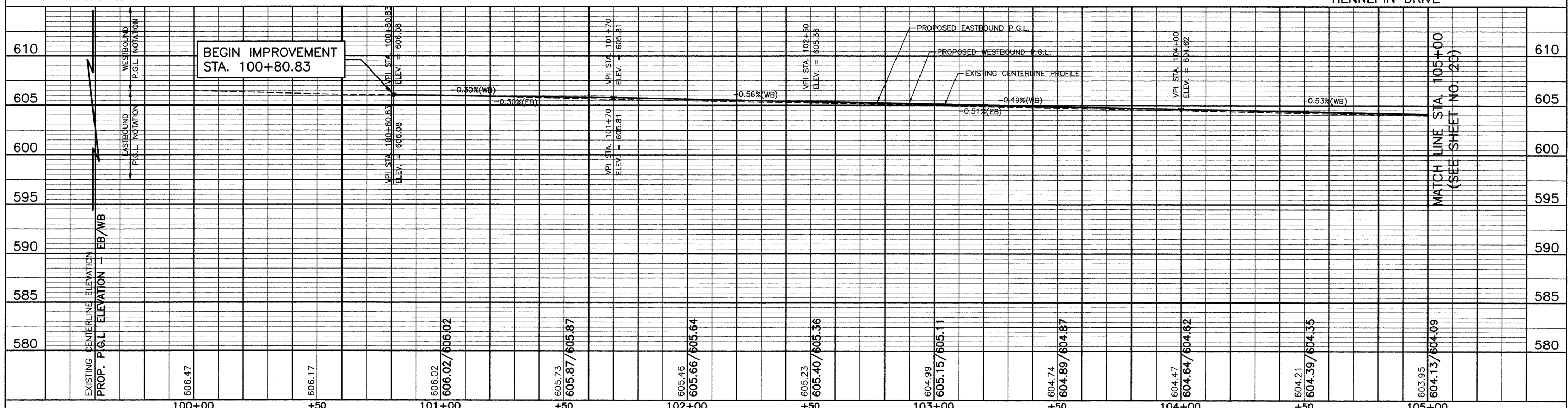
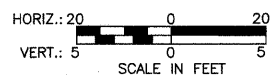


HOT-MIX ASPHALT SURFACE REMOVAL, 2"
HOT-MIX ASPHALT SURFACE COURSE, MIX "D", N70 - 1 3/4"
HOT-MIX ASPHALT BINDER COURSE, IL-19.0, N70 - 2 1/4" (MIN. & VARIES)
POLYMERIZED LEVELING BINDER (MACHINE METHOD), IL-4.75, N50, 3/4"

LEGEND

	CURB & GUTTER REMOVAL
	SIDEWALK AND PAVEMENT REMOVAL
	DRIVEWAY REMOVAL
	DETECTABLE WARNINGS

NOTES:
1. CONSTRUCT BASE COURSE MONOLITHICALLY WITH CURB & GUTTER - SEE DETAIL. PAID FOR AS "COMBINATION CONCRETE CURB & GUTTER, TYPE B-6.12 (MODIFIED)."



FILE NAME =	USER NAME =	DESIGNED BLG/KRK	REVISED -	STATE OF ILLINOIS DEPARTMENT OF TRANSPORTATION	PLAN & PROFILE HENNEPIN DRIVE		F.A.U. RTE.	SECTION	COUNTY	TOTAL SHEETS	SHEET NO.	
	DRAWN BLG/KRK	REVISED -			0326	06-00130-00-CH	WILL	116	19	CONTRACT NO. 63185		
	CHECKED DJK	REVISED -			SCALE: 1"=20'		SHEET NO. 3 OF 6 SHEETS		STA. 100+80.83 TO STA. 105+00		FED. ROAD DIST. NO. 7 ILLINOIS	FED. AID PROJECT M-8003(654)
	DATE 5-29-09	REVISED -										