

DATE	
BY	
REVISIONS	
PLANNED	
NOTED	
CHECKED	
NO.	
FILE NAME	

DATE	
BY	
REVISIONS	
PLANNED	
NOTED	
CHECKED	
NO.	
FILE NAME	

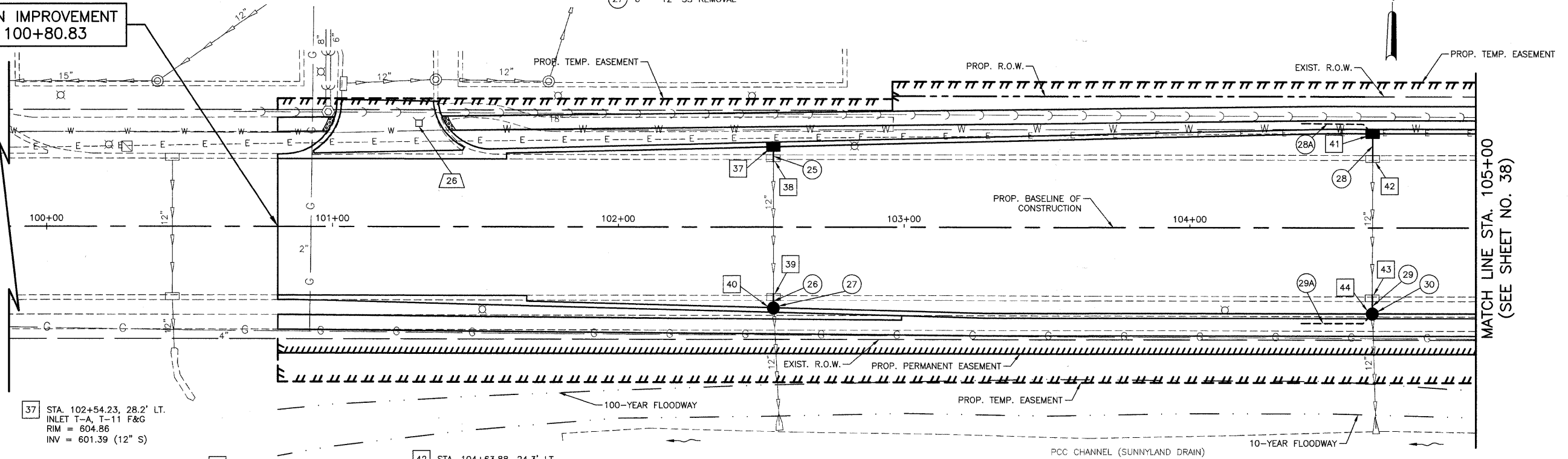
26 STA. 101+30.23, 36.3' LT.
VALVE BOX TO BE ADJUSTED
EX RIM = 606.02
PR RIM = 605.89

- 25 4' - 12" SS CL A, T-1 @ 2.2%
TBF = 0.6 CU. YD.
- 26 4' - 12" SS CL A, T-2 @ 2.2%
TBF = 1.0 CU. YD.
- 27 6' - 12" SS REMOVAL

- 28 9' - 12" SS CL A, T-1 @ 3.0%
TBF = 1.2 CU. YD.
- 28A 25' - PIPE UNDERDRAIN, 4"
- 28B 25' - PIPE UNDERDRAIN, 4"

- 29 6' - 12" SS CL A, T-2 @ 3.0%
TBF = 1.4 CU. YD.
- 30 8' - 12" SS REMOVAL

BEGIN IMPROVEMENT
STA. 100+80.83



37 STA. 102+54.23, 28.2' LT.
INLET T-A, T-11 F&G
RIM = 604.86
INV = 601.39 (12" S)

38 STA. 102+54.20, 24.2' LT.
REMOVING INLET
TO MAINTAIN FLOW
INV = 601.30 (EX 12" S)

39 STA. 102+54.29, 24.5' RT.
REMOVING INLET
TO MAINTAIN FLOW
INV = 600.30 (EX 12" N)

40 STA. 102+54.23, 28.2' RT.
CB T-A, 4' DIA., T-11 F&G
RIM = 604.90
INV = 600.21 (12" N)
INV = 599.42 (EX 12" S)

41 STA. 104+63.90, 33.0' LT.
INLET T-A, T-11 F&G
RIM = 603.80
INV = 601.07 (12" S)

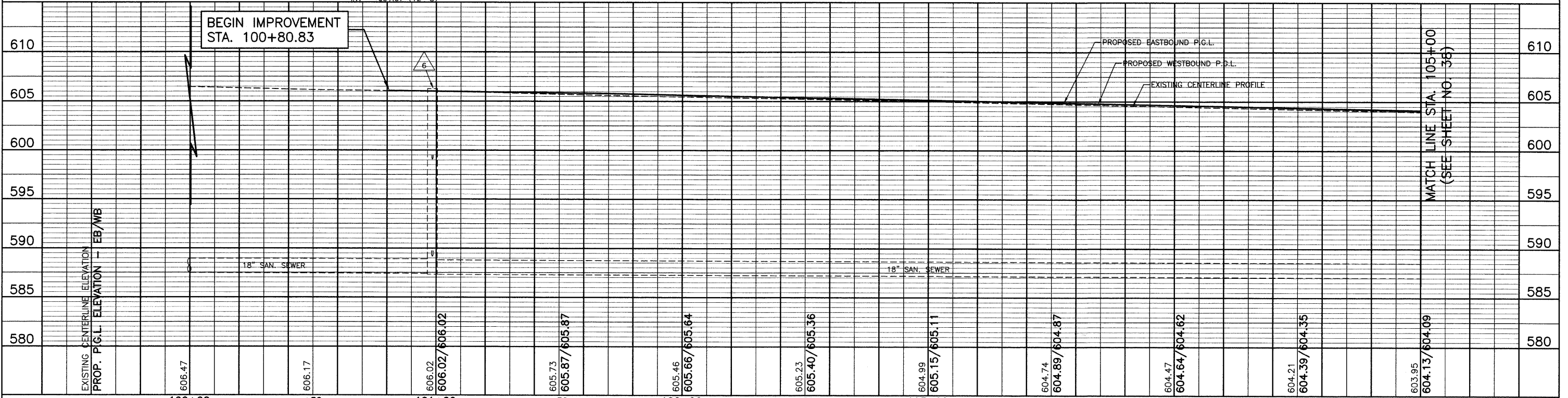
42 STA. 104+63.88, 24.3' LT.
REMOVING INLET
TO MAINTAIN FLOW
INV = 600.80 (EX 12" S)

43 STA. 104+63.73, 24.6' RT.
REMOVING INLET
TO MAINTAIN FLOW
INV = 599.40 (EX 12" N)

44 STA. 104+63.75, 30.0' RT.
CB T-A, 4' DIA., T-11 F&G
RIM = 603.84
INV = 599.22 (12" N)
INV = 598.48 (EX 12" S)

HORIZ.: 20
VERT.: 5
SCALE IN FEET

BEGIN IMPROVEMENT
STA. 100+80.83



FILE NAME =	USER NAME =	DESIGNED <i>BLG/KRK</i>	REVISED -
	DRAWN <i>BLG/KRK</i>		REVISED -
	CHECKED <i>DJK</i>		REVISED -
	DATE <i>5-29-09</i>		REVISED -

**STATE OF ILLINOIS
DEPARTMENT OF TRANSPORTATION**

**DRAINAGE & UTILITIES
HENNEPIN DRIVE**

SCALE: 1"=20' SHEET NO. 4 OF 8 SHEETS STA. 100+80.83 TO STA. 105+00

F.A.U. RTE.	SECTION	COUNTY	TOTAL SHEETS	SHEET NO.
0326	06-00130-00-CH	WILL	116	37
CONTRACT NO. 63185				
FED. ROAD DIST. NO. 7 ILLINOIS FED. AID PROJECT M-8003(654)				

MATCH LINE STA. 105+00
(SEE SHEET NO. 38)