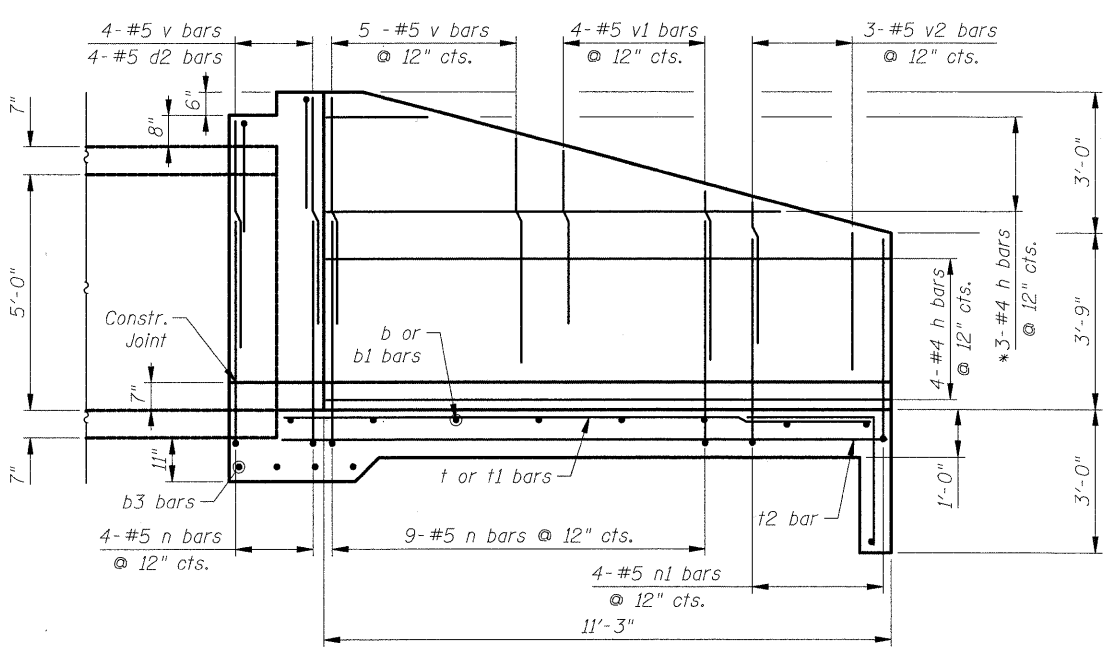
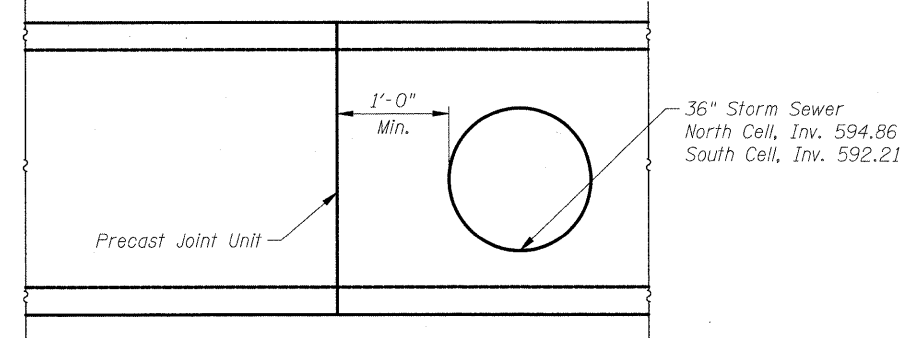


Contract #63185

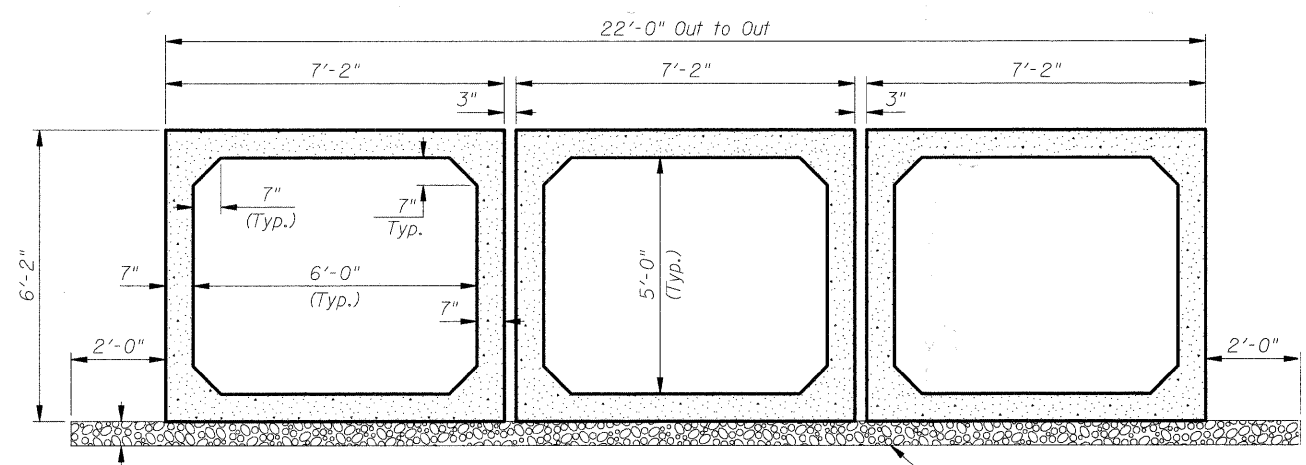


**SE & NW WINGWALLS**

Looking at Back Face  
\* Remainder to used on opposite wingwall

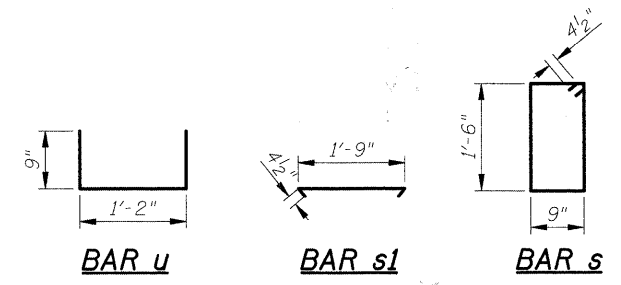


**OPENINGS IN PRECAST CELLS**



**SECTION THRU BARREL**

Porous Granular Material Included in cost of Precast Concrete Box Culvert 6' x 5'.



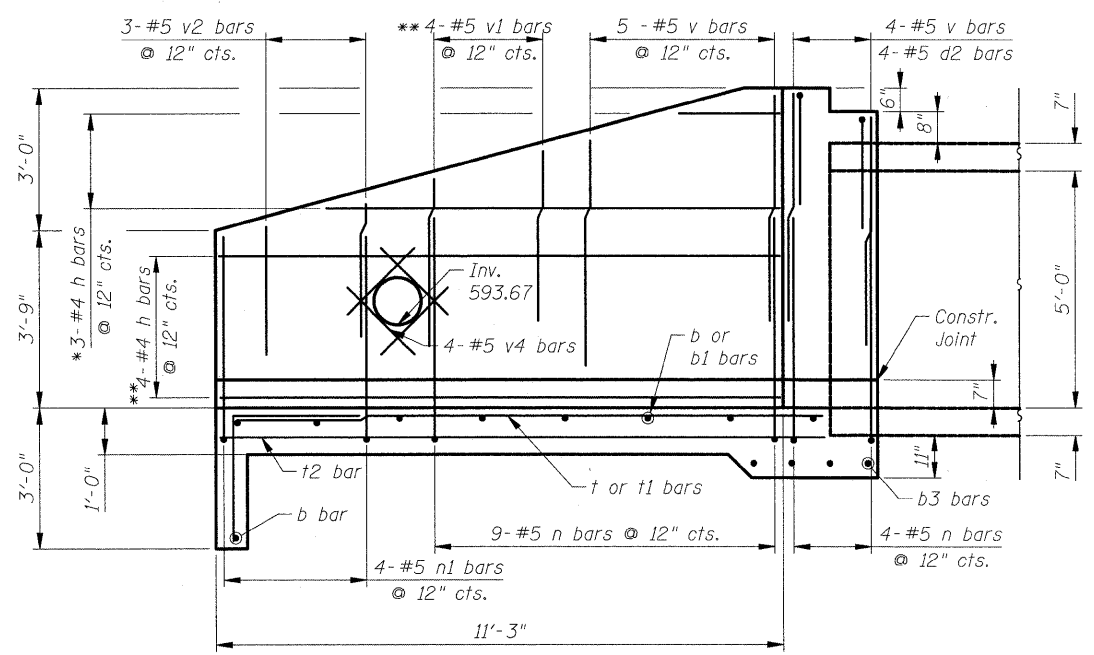
**BAR LIST**

(For 2 Box Culvert End Sections)

| BAR   | NO. | SIZE | LENGTH  | SHAPE |
|-------|-----|------|---------|-------|
| b     | 20  | #4   | 18'-4"  | —     |
| b1    | 16  | #4   | 14'-10" | —     |
| b2    | 8   | #6   | 22'-8"  | —     |
| b3    | 16  | #4   | 22'-8"  | —     |
| d     | 48  | #4   | 5'-4"   | L     |
| d1(E) | 16  | #5   | 6'-3"   | L     |
| d2    | 16  | #5   | 4'-8"   | L     |
| h     | 22  | #5   | 10'-11" | —     |
| n(E)  | 52  | #5   | 10'-2"  | L     |
| n1(E) | 16  | #5   | 9'-9"   | L     |
| s     | 48  | #4   | 5'-3"   | □     |
| s1    | 48  | #4   | 2'-6"   | —     |
| t     | 30  | #4   | 11'-0"  | —     |
| t1    | 6   | #4   | 13'-5"  | —     |
| t2    | 24  | #5   | 12'-2"  | —     |
| u     | 16  | #4   | 2'-8"   | L     |
| v     | 36  | #5   | 4'-9"   | —     |
| v1    | 16  | #5   | 3'-7"   | —     |
| v2    | 12  | #5   | 3'-0"   | —     |
| v3    | 16  | #5   | 5'-5"   | —     |
| v4    | 6   | #5   | 2'-0"   | —     |

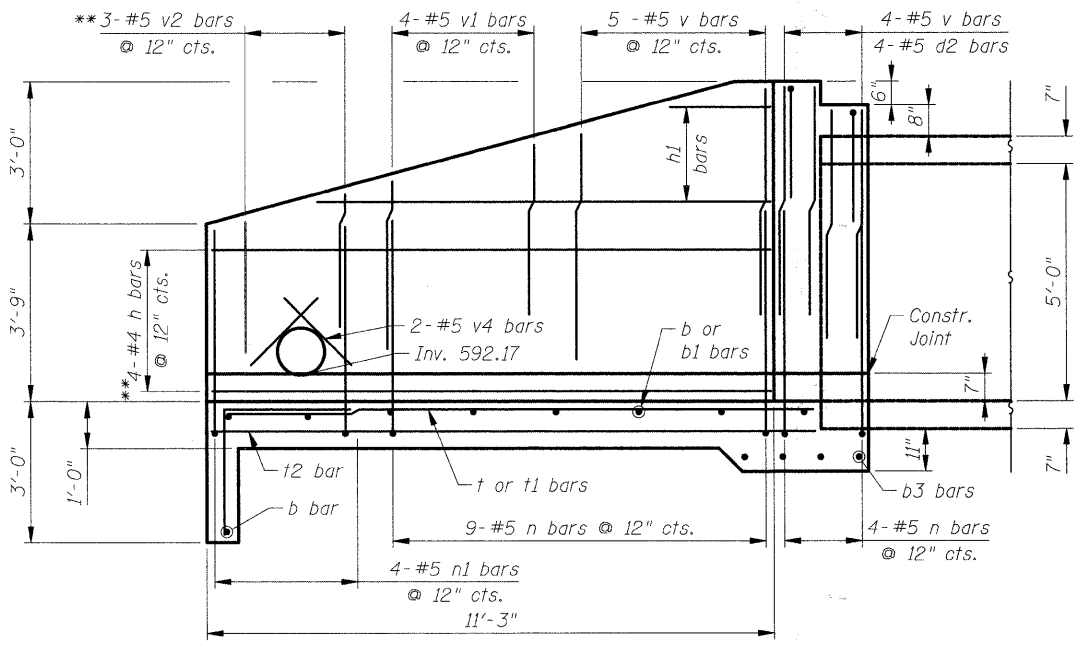
| ITEM                                 | UNIT    | QUANTITY |
|--------------------------------------|---------|----------|
| *** Concrete Structures              | Cu. Yd. | 37.4     |
| *** Reinforcement Bars               | Pound   | 2,690    |
| *** Reinforcement Bars, Epoxy Coated | Pound   | 830      |

\*\*\* Quantities for information only. Cost included with cost of Box Culvert End Sections.



**NE WINGWALL**

Looking at Back Face  
\* Remainder to used on opposite wingwall  
\*\* Adjust bars around opening

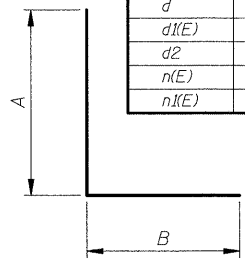


**SW WINGWALL**

Looking at Back Face  
\*\* Adjust bars around opening

| BAR   | A     | B     |
|-------|-------|-------|
| d     | 2'-8" | 2'-8" |
| d1(E) | 4'-0" | 2'-3" |
| d2    | 2'-4" | 2'-4" |
| n(E)  | 4'-9" | 5'-5" |
| n1(E) | 4'-4" | 5'-5" |

**BAR d, d1(E), n(E) & n1(E)**



C3 of C4

STATE OF ILLINOIS  
DEPARTMENT OF TRANSPORTATION  
CULVERT DETAILS II  
ESSINGTON ROAD OVER SUNNYLAND DRAIN  
STATION 142+63.00  
SECTION 06-00130-00-CH WILL COUNTY  
STRUCTURE 099-6469

Scale: None  
Date: May 29, 2009

By: M. Lange  
Checked: G. Hatlestad

J:\2145\CAD\Struct\03\_culvert\_details.dgn  
 9/20/09 11:52 AM

**CIVILTECH**  
450 E Devon Ave, Suite 300  
Itasca, Illinois 60143  
Tel: 630.773.3900 Fax: 630.773.3975  
www.civiltechinc.com