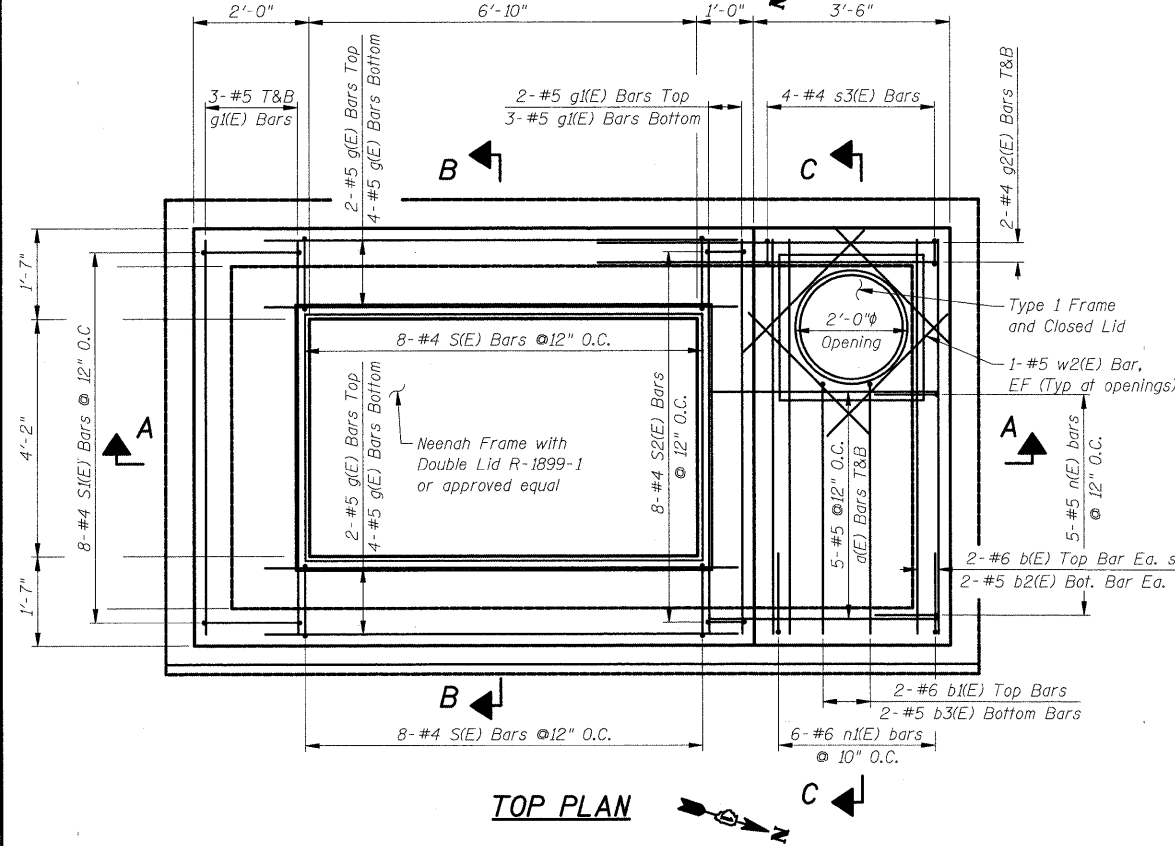
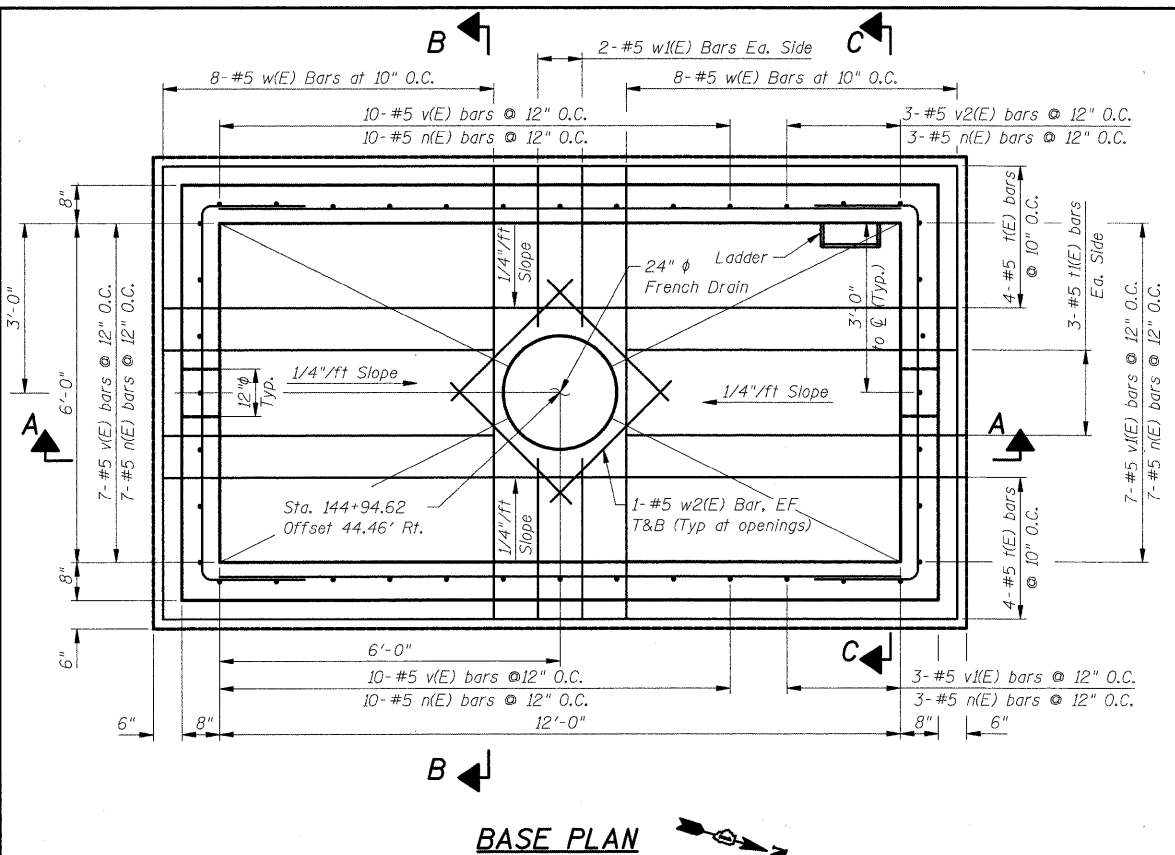
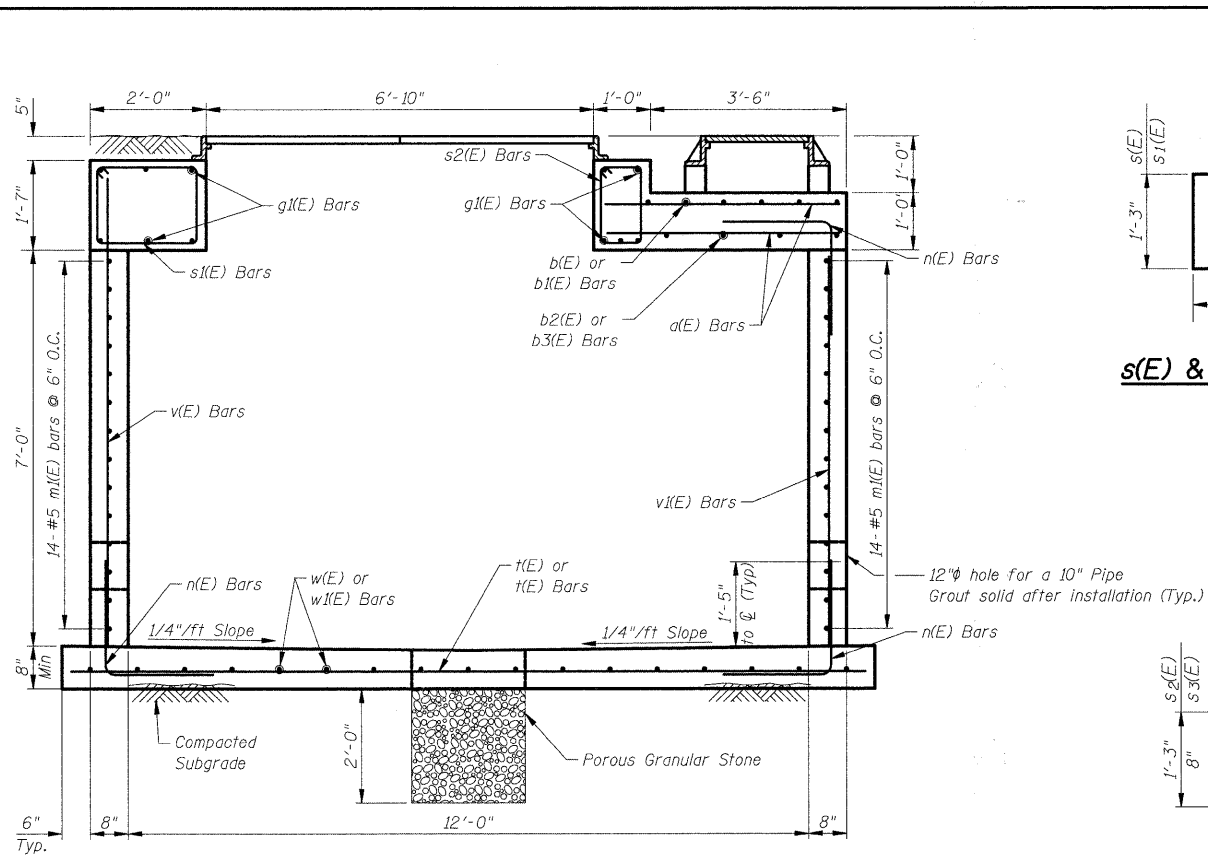


Contract #63185

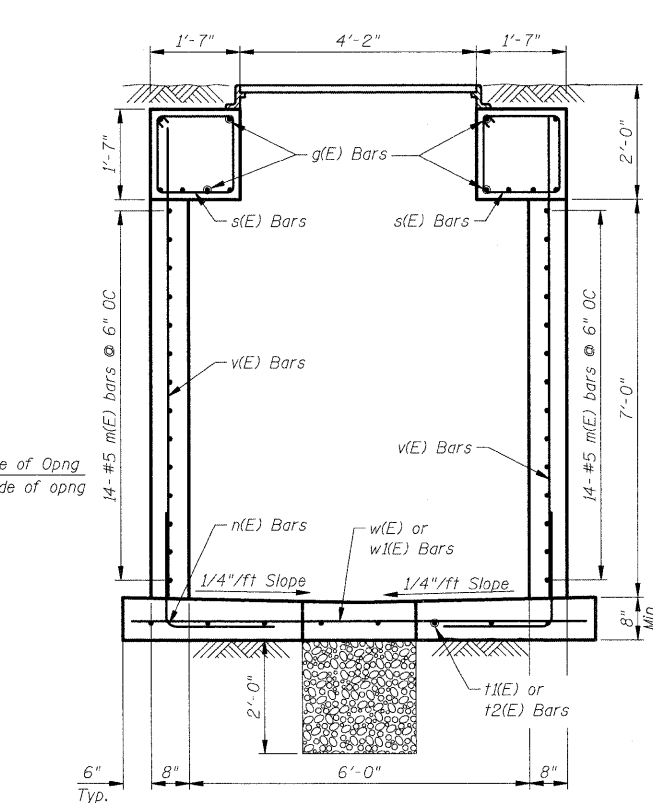


NOTES:

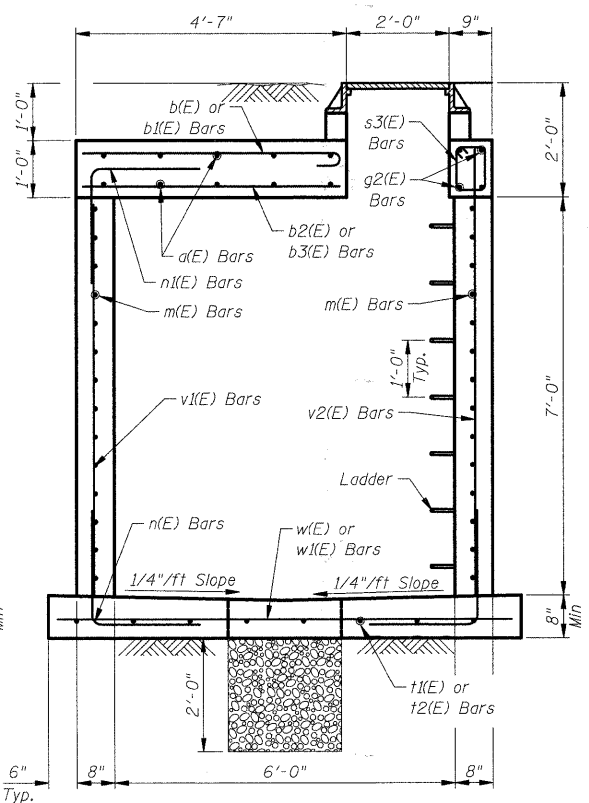
1. Reinforcement bars designated (e) shall be epoxy coated.
2. At contractor's option, vault can be precast. Submit signed and sealed calculations by an SE in the State of Illinois and shop drawings for approval.
3. See standard 602701 for details of manhole steps.



SECTION A-A



SECTION B-B



SECTION C-C

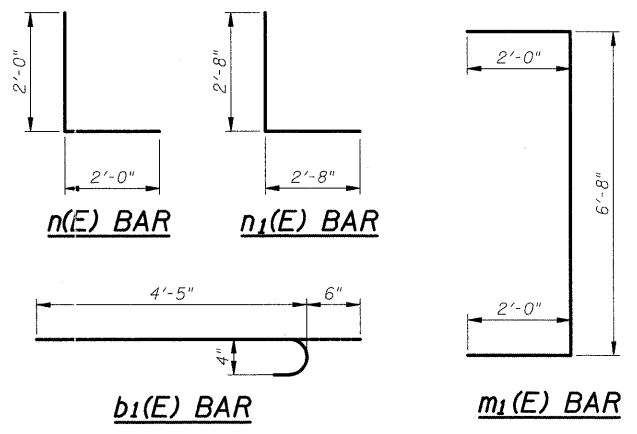
s(E) & s1(E) BARS

s2(E) & s3(E) BARS

BAR LIST

BAR	NO.	SIZE	LENGTH	SHAPE
d(E)	10	#5	4'-2"	—
b(E)	4	#6	6'-11"	—
b1(E)	2	#6	4'-11"	—
b2(E)	4	#5	6'-11"	—
b3(E)	2	#5	4'-5"	—
g(E)	12	#5	8'-4"	—
g1(E)	11	#5	6'-10"	—
g2(E)	4	#5	6'-0"	—
m(E)	28	#5	12'-0"	—
m1(E)	28	#5	10'-8"	—
n(E)	45	#5	4'-0"	L
n1(E)	6	#6	5'-4"	L
s(E)	16	#4	5'-9"	□
s1(E)	8	#4	6'-8"	□
s2(E)	8	#4	4'-7"	□
s3(E)	4	#4	2'-11"	□
t(E)	8	#5	14'-0"	—
t1(E)	6	#5	5'-10"	—
v(E)	27	#5	8'-4"	—
v1(E)	10	#5	6'-8"	—
v2(E)	3	#5	7'-8"	—
w(E)	16	#5	8'-0"	—
w1(E)	4	#5	2'-10"	—
w2(E)	16	#5	2'-10"	—
ITEM		UNIT	QUANTITY	
* Concrete Structures		Cu. Yd.	13.1	
* Reinforcement Bars, Epoxy Coated		Pound	2070	

* For information only



WATER METER VAULT
 STA. 144+94.62 TO ϕ OF VAULT
 OFFSET 44.46' RT. TO ϕ OF VAULT

BILL OF MATERIAL

ITEM	UNIT	TOTAL
Water Meter Vault	Each	1

STATE OF ILLINOIS
 DEPARTMENT OF TRANSPORTATION
 WATER METER VAULT DETAILS

ESSINGTON ROAD AT HENNEPIN DRIVE
 STATION 144+94.62, OFFSET 44.46' RIGHT
 SECTION 06-00130-00-CH WILL COUNTY

Scale: None
 Date: May 29, 2009

By: M. Lange
 Checked: G. Hatlestad