
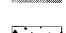
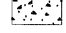
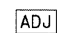
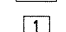
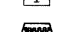

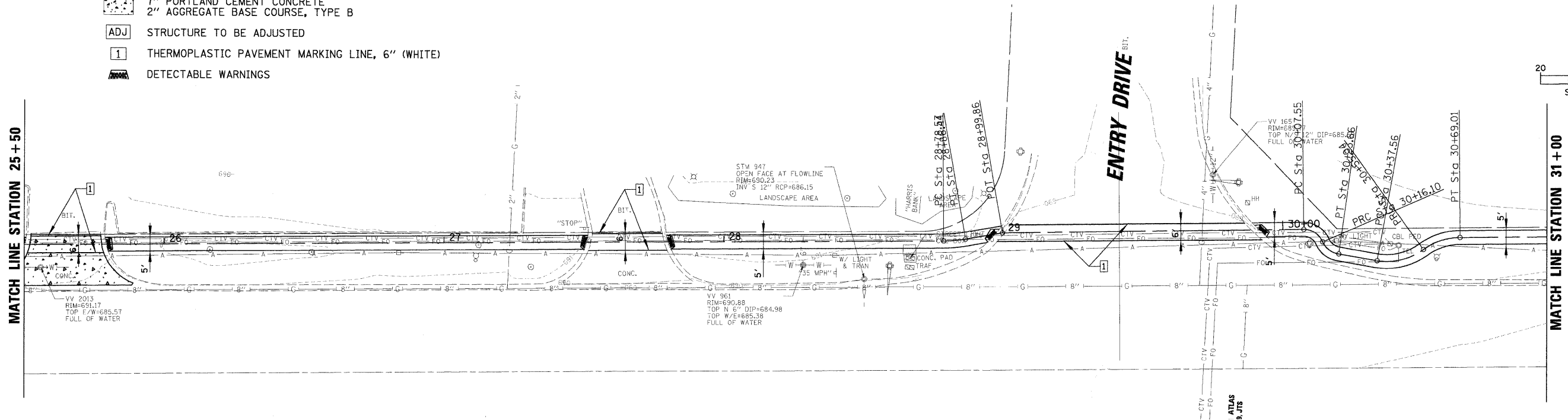
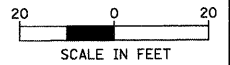


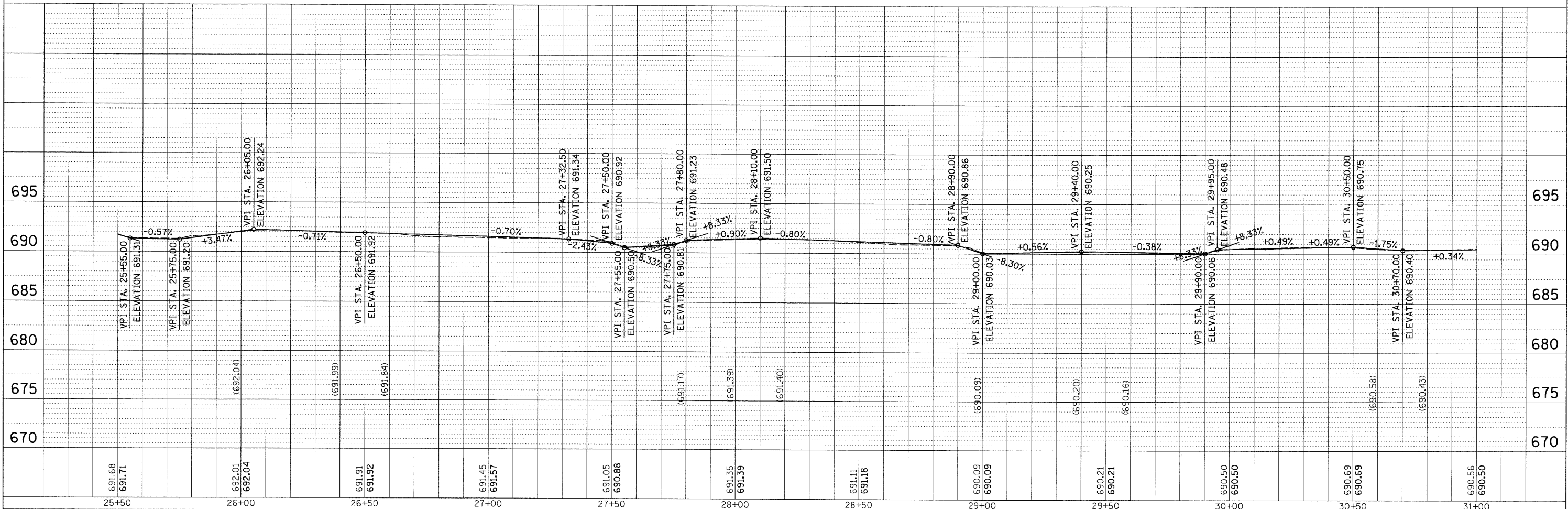
LEGEND

-  3" HOT-MIX ASPHALT SURFACE, MIX "C", N50
-  6" AGGREGATE BASE COURSE, TYPE B
-  7" PORTLAND CEMENT CONCRETE
-  2" AGGREGATE BASE COURSE, TYPE B
-  STRUCTURE TO BE ADJUSTED
-  THERMOPLASTIC PAVEMENT MARKING LINE, 6" (WHITE)
-  DETECTABLE WARNINGS



PLAN	SURVEYED	BY	DATE
	PLOTTED		
	ALIGNED		
	CHECKED		
	DATE		
	NO.		
	FILE NAME		

PROFILE	SURVEYED	BY	DATE
	PLOTTED		
	GRADES		
	CHECKED		
	DATE		
	NO.		
	NOTATIONS		



FILE NAME = N:\BENSENVILLE\080086\00-SW\1\RP4.dgn	USER NAME = MAGOLDEN	DESIGNED -	REVISED -	STATE OF ILLINOIS DEPARTMENT OF TRANSPORTATION	SIDEWALK PLAN AND PROFILE		F.A. RTE.	SECTION	COUNTY	TOTAL SHEETS	SHEET NO.		
PLOT SCALE = 20'	PLOT DATE = 4/30/2009	DRAWN -	REVISED -		SCALE: 20'	SHEET NO.	OF	SHEETS	STA.	TO STA.	DUPAGE	33	14
		CHECKED -	REVISED -										
		DATE -	REVISED -										
CONTRACT NO. 63187											ILLINOIS FED. AID PROJECT		