
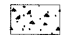

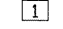
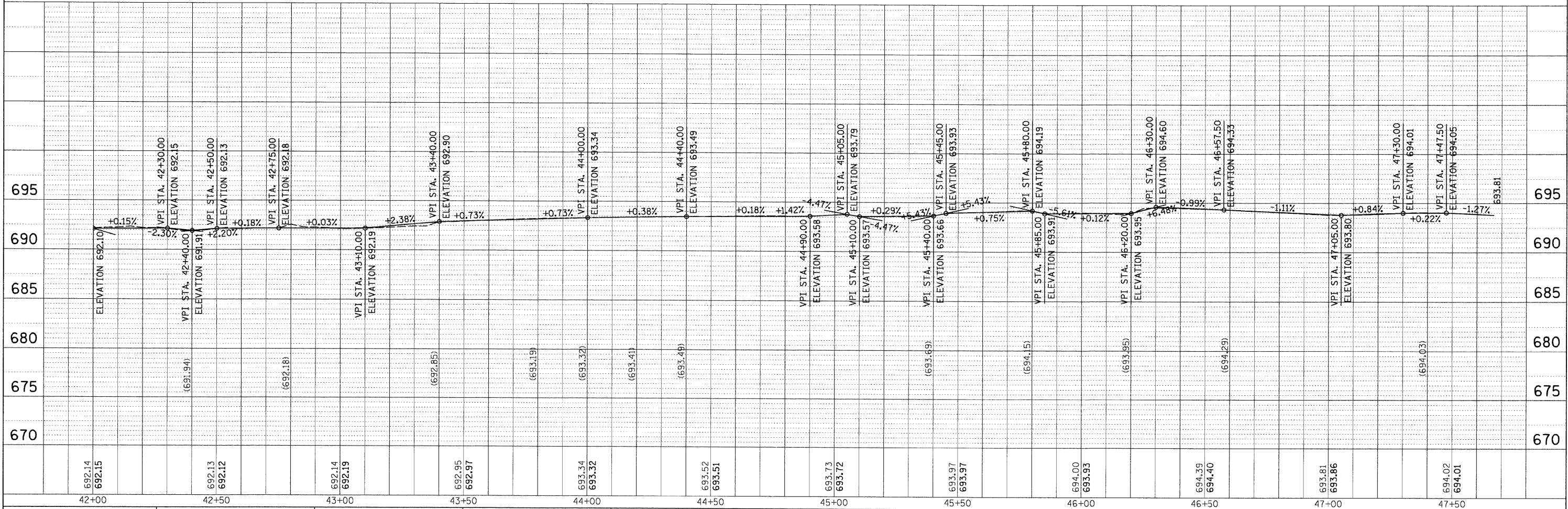
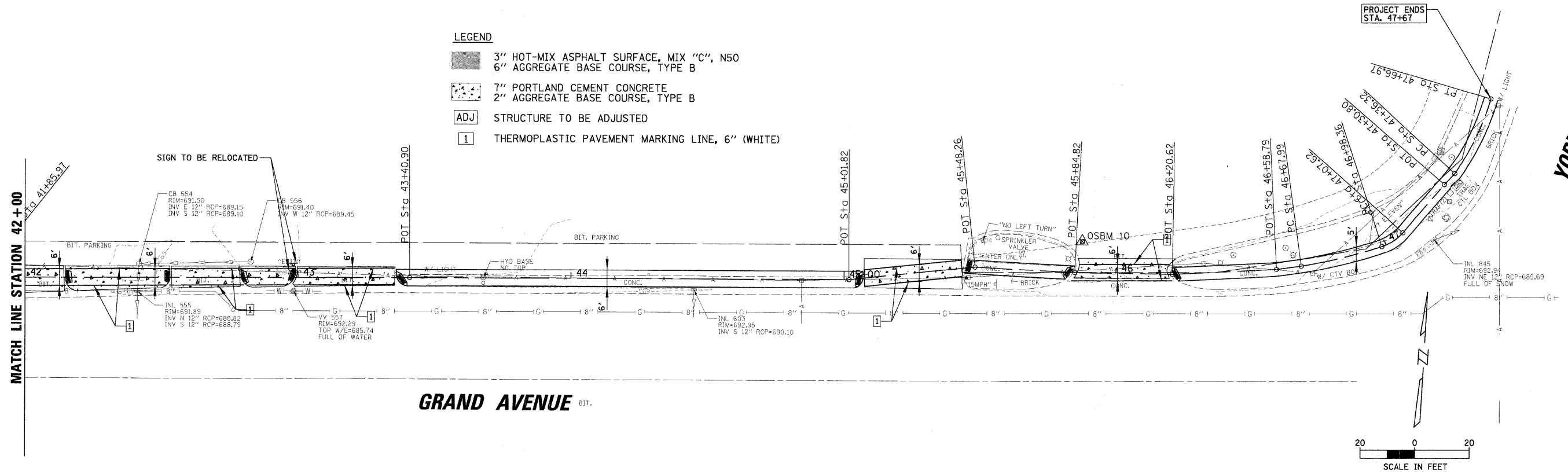


PLAN	SUBMITTED	DATE
	BY	
	NOTED	
	CHECKED	
	DATE	
	NO.	
	FILE NAME	
	NO.	

PROFILE	SUBMITTED	DATE
	BY	
	NOTED	
	CHECKED	
	DATE	
	NO.	
	FILE NAME	
	NO.	

LEGEND

-  3" HOT-MIX ASPHALT SURFACE, MIX "C", N50
6" AGGREGATE BASE COURSE, TYPE B
-  7" PORTLAND CEMENT CONCRETE
2" AGGREGATE BASE COURSE, TYPE B
-  STRUCTURE TO BE ADJUSTED
-  THERMOPLASTIC PAVEMENT MARKING LINE, 6" (WHITE)



FILE NAME = N:\BENSENVILLE\080659\Civil\RP7.dgn	USER NAME = MAGOLDEN	DESIGNED -	REVISED -	STATE OF ILLINOIS DEPARTMENT OF TRANSPORTATION	SIDEWALK PLAN AND PROFILE		F.A. RTE.	SECTION	COUNTY	TOTAL SHEETS	SHEET NO.
	PLOT SCALE = 20'	DRAWN -	REVISED -		SCALE: 20'	SHEET NO. OF SHEETS	STA. TO STA.	08-00086-00-SW	DUPAGE	33	17
	PLOT DATE = 4/30/2009	CHECKED -	REVISED -		CONTRACT NO. 63187						
		DATE -	REVISED -		(ILLINOIS) FED. AID PROJECT						