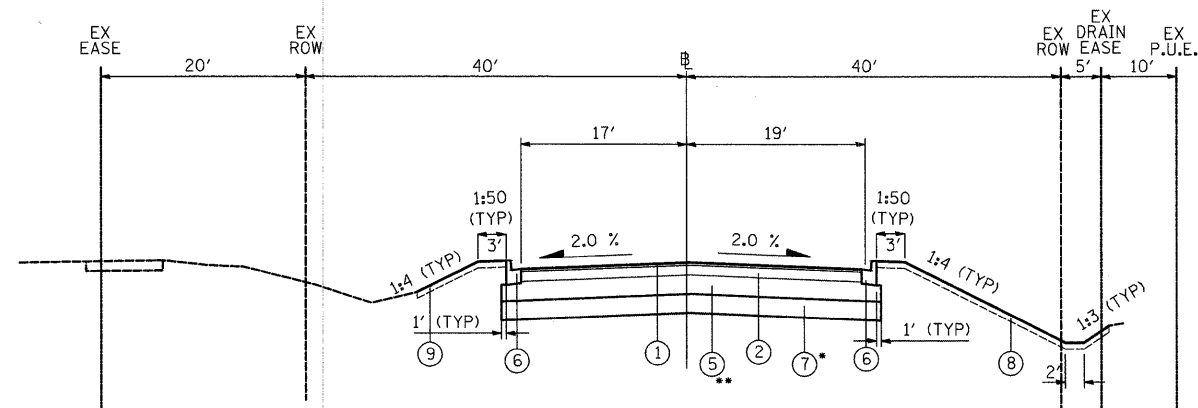
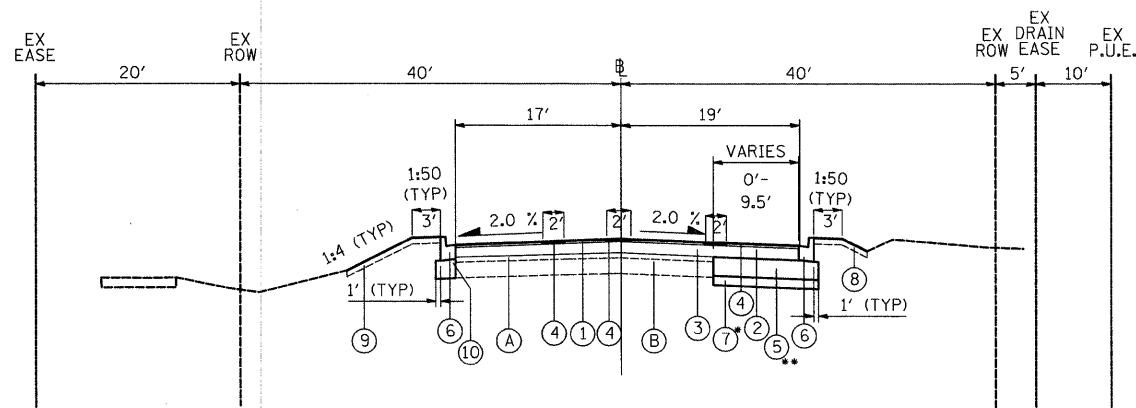


REED ROAD PROPOSED TYPICAL SECTION
STA. 402+15 TO STA. 417+00



REED ROAD PROPOSED TYPICAL SECTION
STA. 417+00 TO STA. 419+00



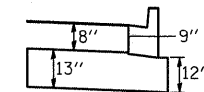
REED ROAD PROPOSED TYPICAL SECTION
STA. 419+00 TO STA. 426+33

LEGEND

- ① HOT-MIX ASPHALT SURFACE COURSE, MIX "D", N70, 1 3/4" (40603340)
- ② HOT-MIX ASPHALT BINDER COURSE, IL-19.0, N70, 6 1/4" (40603085)
- ③ HOT-MIX ASPHALT BINDER COURSE, IL-19.0, N70, 4 1/4" MIN. AND VARIES (40603085)
- ④ STRIP REFLECTIVE CRACK CONTROL TREATMENT (44300200)
- ⑤ AGGREGATE SUBGRADE 12" (20001050)
- ⑥ COMBINATION CONCRETE CURB AND GUTTER, TYPE B-6.12 (60603800)
- ⑦ REMOVAL AND DISPOSAL OF UNSUITABLE MATERIAL (20201200)
POROUS GRANULAR EMBANKMENT, SUBGRADE (20700420)
- ⑧ TOPSOIL FURNISH AND PLACE, 4" (21101615) &
SEEDING CLASS 1A (25000110)
(SEE LANDSCAPING SHEETS FOR LIMITS OF SEEDING)
- ⑨ TOPSOIL FURNISH AND PLACE, 4" (21101615) & SODDING (25200100)
(SEE LANDSCAPING SHEETS FOR LIMITS OF SODDING)
- ⑩ SUB-BASE GRANULAR MATERIAL, TYPE C (31102000)
- A EXISTING HOT-MIX ASPHALT PAVEMENT
- B EXISTING SUBGRADE

- * STA. 417+50 TO 420+50 UNDERCUTS WILL BE 12"
- WITH GEOTEXTILE GROUND STABILIZATION FABRIC
STA. 424+00 TO 427+00 UNDERCUTS WILL BE 6"

- ** AGGREGATE SUBGRADE SHALL BE 12" UNDER CURB AND
GUTTER AND 13" UNDER PAVEMENT. THERE WILL BE NO
ADDITIONAL COMPENSATION FOR THE ADDITIONAL THICKNESS
OF SUBGRADE. THE EXTRA THICKNESS OF THE SUBGRADE
SHALL BE INCLUDED IN AGGREGATE SUBGRADE 12".



HOT-MIX ASPHALT MIXTURE REQUIREMENTS			
MIXTURE TYPE	ACT TYPE	VOIDS	MAX RAP
PROPOSED WIDENING AND RECONSTRUCTION (REED RD)			
HOT-MIX ASPHALT SURFACE COURSE, MIX "D", N70	PG 64-22	4% @ 70 GYR.	15.0%
HOT-MIX ASPHALT BINDER COURSE, IL-19.0, N70	PG 64-22*	4% @ 70 GYR.	25.0%
OVERLAY			
HOT-MIX ASPHALT SURFACE COURSE, MIX "D", N70	PG 64-22	4% @ 70 GYR.	15.0%
HOT-MIX ASPHALT BINDER COURSE, IL-19.0, N70	PG 64-22*	4% @ 70 GYR.	25.0%

THE UNIT WEIGHT USED TO CALCULATE ALL HMA SURFACE MIXTURE QUANTITIES IS 112 LBS/SQ YD / IN.

* WHEN RAP EXCEEDS 20%, THE NEW ASPHALT BINDER IN THE MIX SHALL BE PG 58-22.