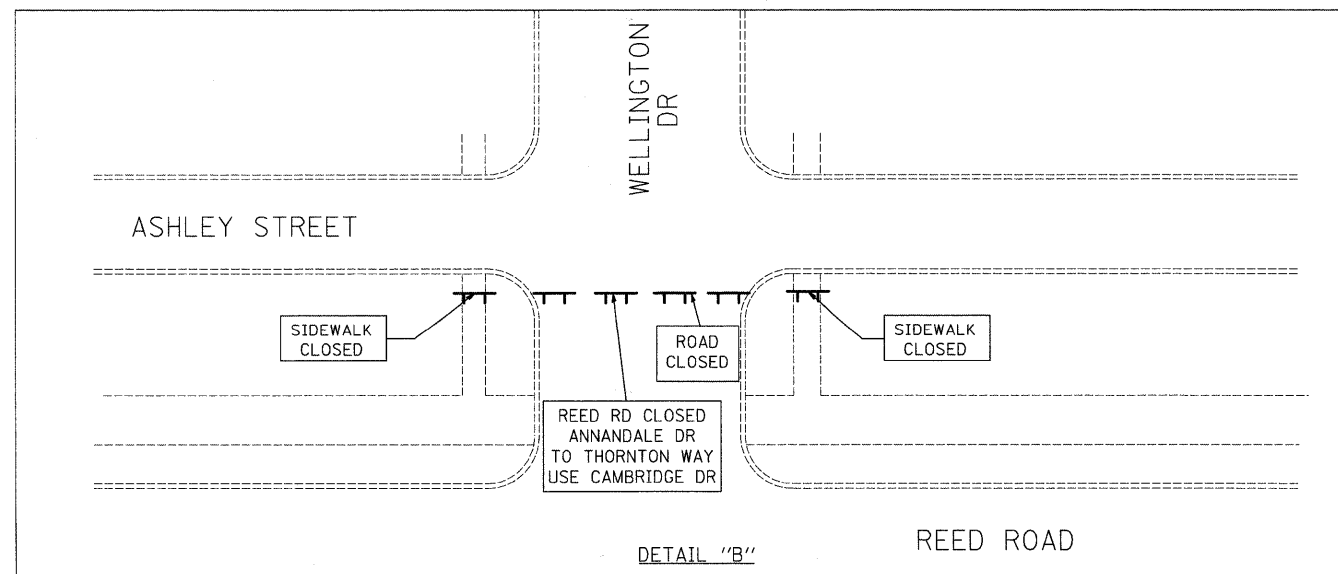
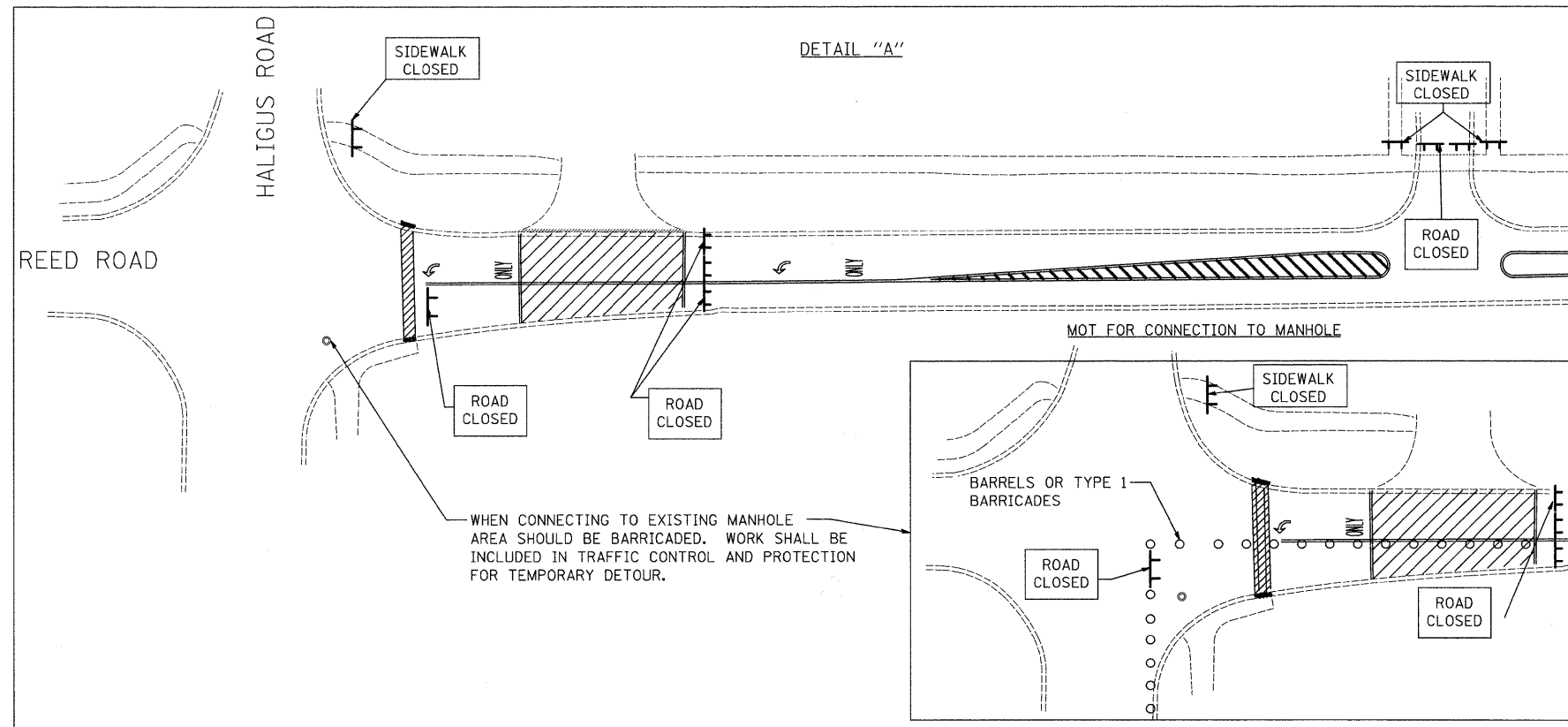


DETOUR GENERAL NOTES

1. THE ENGINEER SHALL BE NOTIFIED IN WRITING AT LEAST ONE WEEK PRIOR TO THE DAY THE DETOUR IS TO BE IN EFFECT. THE CONTRACTOR SHALL CONTACT THE APPROPRIATE LOCAL AGENCIES AND INTERESTED PARTIES.
2. ALL SIGNING SHALL BE IN ACCORDANCE WITH THE APPLICABLE PROVISIONS OF THE STANDARD SPECIFICATIONS, THE DETAILS IN THESE PLANS, THE LATEST EDITION OF THE STATE OF ILLINOIS "MANUAL ON UNIFORM TRAFFIC CONTROL DEVICES," AND AS DIRECTED BY THE ENGINEER.
3. THE SIZES OF ALL SIGNS NOT SPECIFIED IN THESE PLANS SHALL BE AS REQUIRED BY THE ILLINOIS "MANUAL ON UNIFORM TRAFFIC CONTRL DEVICES."
4. ADDITIONAL SIGNING AND/OR BARRICADES DEEMED NECESSARY BY THE ENGINEER SHALL BE PROVIDED AND INSTALLED AT NO ADDITIONAL COST.
5. THE CONTRACTOR SHALL PROVIDE THE ENGINEER WITH THE NAMES AND PHONE NUMBERS OF HIS REPRESENTATIVES ON THE CONSTRUCTION SITE, AND HIS REPRESENTATIVE RESPONSIBLE FOR THE DETOUR SIGNING, PRIOR TO THE START OF WORK.
6. THE CONTRACTOR SHALL BE RESPONSIBLE FOR THE FIELD LOCATION OF ALL DETOUR AND CONSTRUCTION SIGNING. THE CONTRACTOR MAY REQUEST THE ENGINEER TO FIELD VERIFY THE POSITIONS OF ANY SIGNS.
7. ACTUAL LOCATIONS FOR SIGNING SHOWN ON THE DETOUR PLANS MAY BE ADJUSTED TO FIT FIELD CONDITIONS.
8. ALL EXISTING SIGNING THAT IS NOT APPLICABLE WHILE THE DETOUR IS IN EFFECT SHALL BE COMPLETELY COVERED BY THE CONTRACTOR IN A MANNER MEETING THE APPROVAL OF THE ENGINEER.
9. ALL DETOUR SIGNING SHALL BE POST MOUNTED.
10. ALL DETOUR SIGNING EXCEPT REGULATORY SIGNS SHALL HAVE BLACK LEGENDS ON FLUORESCENT ORANGE SHEETING AND STANDARD BLACK BORDERS. THE FLUORESCENT ORANGE REFLECTIVE SHEETING SHALL MEET THE REQUIREMENTS OF ARTICLE 1106.01 OF THE STANDARD SPECIFICATIONS. ALL DETOUR SIGNING SHALL BE NEW OR IN LIKE-NEW CONDITION. THE ENGINEER SHALL BE THE SOLE JUDGE OF THE CONDITION OF THE SIGNS.
11. THE ROAD NAME SIGN SHALL BE A BLACK LEGEND ON ORANGE REFLECTIVE SHEETING. THE SIGN BLANK SHALL BE VARIABLE WITH DESIGN SERIES C LETTERS. THE CAPITAL LETTERS SHALL BE 6".
12. AT A MINIMUM, ALL AMBER FLASHING LIGHTS THAT ARE REQUIRED FOR THE DETOUR SIGNING SHALL MEET THE REQUIREMENTS FOR TYPE A-LOW INTENSITY FLASHING LIGHTS IN ARTICLE 1106.02 OF THE STANDARD SPECIFICATIONS. ALL LIGHTS SHALL OPERATE DURING HOURS OF DARKNESS. ONLY LIGHTS THAT HAVE BEEN APPROVED BY THE ILLINOIS DEPARTMENT OF TRANSPORTATION SHALL BE USED.
13. THE CONTRACTOR SHALL BE RESPONSIBLE FOR ENSURING THAT ALL BARRICADES, SIGNS, LIGHTS AND OTHER DEVICES INSTALLED BY HIM ARE IN PLACE AND OPERATING 24 HOURS EACH DAY, INCLUDING SUNDAYS AND HOLIDAYS.
14. THE "ROAD CLOSED" (R11-2 & R11-4) SIGNS SHALL BE MOUNTED ON THE TYPE III BARRICADES. ALL TYPE III BARRICADES SHALL HAVE 2 AMBER TYPE A-LOW INTENSITY FLASHING LIGHTS SPACED NEAR THE CENTERLINES OF THE SUPPORTS.
15. THE TYPE III BARRICADES USED AT POINTS OF CLOSURE TO THRU TRAFFIC ONLY SHALL NOT EXCEED 8 FEET IN WIDTH EACH FOR A SINGLE APPROACH LANE. ALL BARRICADES AT THESE LOCATIONS SHALL HAVE REFLECTORIZED STRIPING ON THE BACK SIDES OF THE BARRICADES.
16. CONSTRUCTION EQUIPMENT SHALL NOT BE PARKED IMMEDIATELY BEHIND THE TYPE III BARRICADES DURING NON-WORKING HOURS. IN ANY EVENT, ARTICLE 701.11 OF THE STANDARD SPECIFICATIONS SHALL APPLY.
17. DURING NON-WORKING HOURS THE CONTRACTOR SHALL PROVIDE A MEANS TO RESTRAIN THE TYPE III BARRICADES FROM EASY MOVEMENT BY VANDALS. THE CHOSEN METHOD SHALL BE APPROVED BY THE ENGINEER.
18. THE CONTRACTOR SHALL BE RESPONSIBLE FOR MAINTAINING THE VISIBILITY OF ALL DETOUR AND CONSTRUCTION SIGNS, INCLUDING BRUSHING BACK VEGETATION IF DEEMED NECESSARY BY THE ENGINEER.
19. THE ENGINEER SHALL BE NOTIFIED AT LEAST 24 HOURS BEFORE THE ROAD IS TO BE REOPENED TO TRAFFIC. THE ENGINEER WILL CONTRACT THE APPROPRIATE LOCAL AGENCIES AND INTERESTED PARTIES.
20. THE COST OF THIS WORK FOR THE DETOUR SHALL BE INCLUDED IN THE UNIT PRICE FOR "TRAFFIC CONTROL AND PROTECTION FOR TEMPORARY DETOUR".

21. TRAFFIC CONTROL DEPICTED IN THESE PLANS AND THE APPLICABLE IDOT DETAILS AND STANDARDS ARE THE MINIMUM REQUIREMENTS. OTHER WORK OR SIGNING MAY BE REQUIRED BY THE ENGINEER. TRAFFIC CONTROL AND PROTECTION SHALL BE PERFORMED IN ACCORDANCE WITH THE STANDARD SPECIFICATIONS, DIVISION 700; APPLICABLE GUIDELINES IN THE ILLINOIS MANUAL ON UNIFORM TRAFFIC CONTROL DEVICES FOR STREETS AND HIGHWAYS; AND APPLICABLE HIGHWAY STANDARDS FOR TRAFFIC CONTROL, UNLESS HEREIN REVISED.
22. THE EXACT NUMBER, LOCATION AND SPACING OF ALL SIGNS AND TRAFFIC CONTROL DEVICES SHALL FIT FIELD CONDITIONS AS DIRECTED BY THE ENGINEER.
23. ALL CONSTRUCTION SIGNS SHALL HAVE FLUORESCENT ORANGE BACKGROUNDS.
24. ALL SIGNS SHALL BE MOUNTED ON METAL POSTS, 7 FEET ABOVE THE EXISTING GROUND AND DRIVEN A MINIMUM OF 3 FEET INTO THE GROUND. A J.U.L.I.E. LOCATE SHALL BE PERFORMED PRIOR TO THE INSTALLATION OF THE POSTS.
25. THE FIRST WARNING SIGNS IN EACH DIRECTION OF TRAVEL SHALL BE EQUIPPED WITH MONO-DIRECTIONAL AMBER FLASHING LIGHTS DURING HOURS OF DARKNESS. FLAGS ARE OPTIONAL.



FILE NAME =	USER NAME = eds	DESIGNED - EAD	REVISED -	STATE OF ILLINOIS DIVISION OF TRANSPORTATION	DETOUR GENERAL NOTES			F.A.U. RTE. 4075	SECTION 08-00032-00-RS	COUNTY MCHENRY	TOTAL SHEETS 49	SHEET NO. 17
	PLOT SCALE = 1/8" = 1' / IN.	DRAWN - EDS	REVISED -		SCALE: N.T.S.	SHEET NO. 1 OF 2 SHEETS	STA. TO STA.	CONTRACT NO. 63193				
	PLOT DATE = 4/30/2009	CHECKED - DNM	REVISED -									
		DATE - 5/1/09	REVISED -									