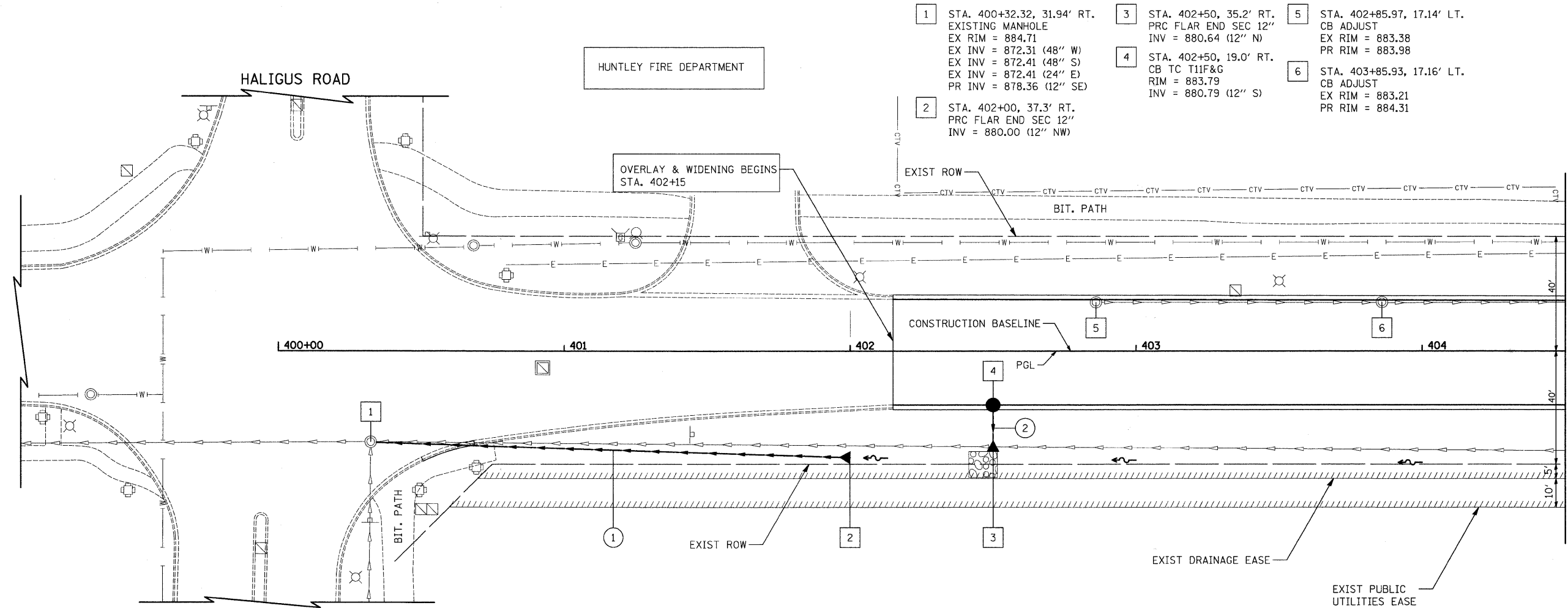


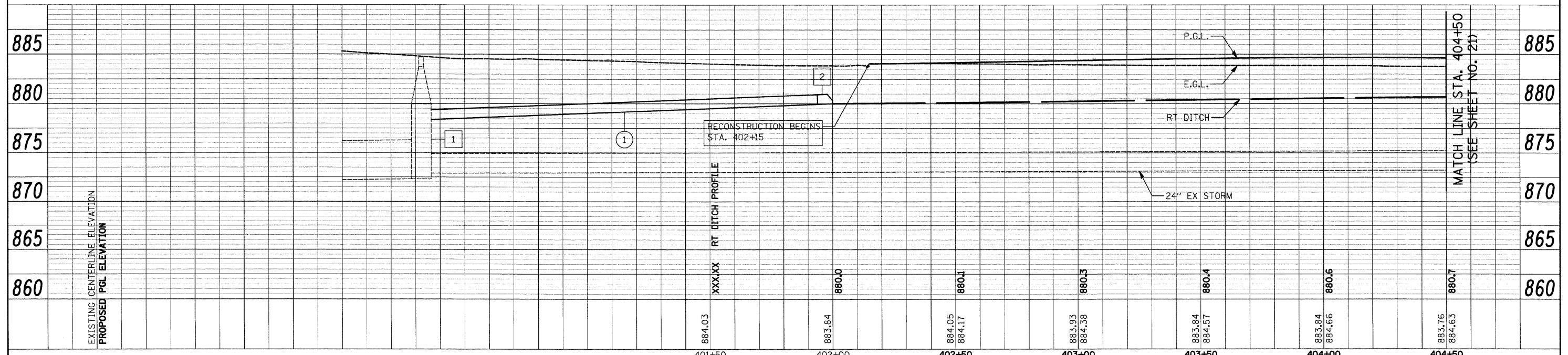
PLAN	SURVEYED	DATE
	PLOTTED	BY
	CHECKED	
	RT. OF WAY CHECKED	
	CADD FILE NAME	
	NO.	

PROFILE	SURVEYED	DATE
	PLOTTED	BY
	CHECKED	
	RT. OF WAY CHECKED	
	STRUCTURE NOTATIONS DRKO	
	NO.	



- 1 STA. 400+32.32, 31.94' RT.
EXISTING MANHOLE
EX RIM = 884.71
EX INV = 872.31 (48" W)
EX INV = 872.41 (48" S)
EX INV = 872.41 (24" E)
PR INV = 878.36 (12" SE)
- 2 STA. 402+00, 37.3' RT.
PRC FLAR END SEC 12"
INV = 880.00 (12" NW)
- 3 STA. 402+50, 35.2' RT.
PRC FLAR END SEC 12"
INV = 880.64 (12" N)
- 4 STA. 402+50, 19.0' RT.
CB TC T11F&G
RIM = 883.79
INV = 880.79 (12" S)
- 5 STA. 402+85.97, 17.14' LT.
CB ADJUST
EX RIM = 883.38
PR RIM = 883.98
- 6 STA. 403+85.93, 17.16' LT.
CB ADJUST
EX RIM = 883.21
PR RIM = 884.31

- 1 158' - STORM SEW CL A 2, 12" @ 1.00%
T.B.F. = 12.3 CU. YD.
- 2 9' - STORM SEW CL A 1, 12" @ 1.00%
T.B.F. = 0.3 CU. YD.



FILE NAME = J:\2213\ood\sheet\2213.D&U.01.dgn	USER NAME = ead	DESIGNED - EAD	REVISED -	STATE OF ILLINOIS DEPARTMENT OF TRANSPORTATION	REED ROAD - DRAINAGE AND UTILITIES	F.A.U. RTE. = 4075	SECTION = 08-00032-00-RS	COUNTY = MCHENRY	TOTAL SHEETS = 49	SHEET NO. = 20	
PLOT SCALE = 20.0000' / IN.	CHECKED - DNM	REVISIED -	REVISIED -			SCALE 1"=20'	SHEET NO. 1 OF 6 SHEETS	STA. 400+00 TO STA. 404+50	CONTRACT NO. 63193		
PLOT DATE = 5/1/2009	DATE = 5/1/09	REVISIED -	REVISIED -			FED. ROAD DIST. NO. ILLINOIS FED. AID PROJECT					