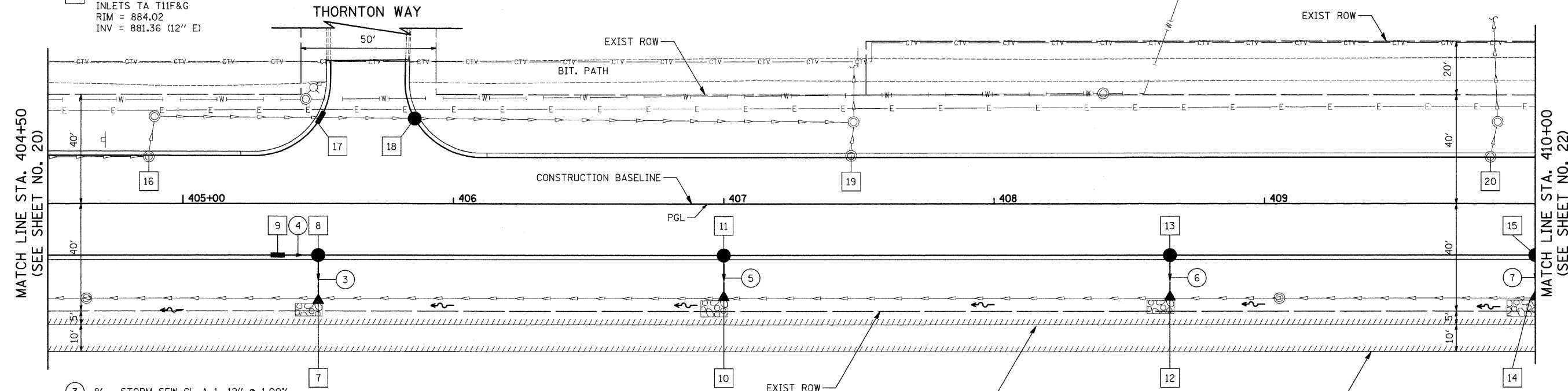


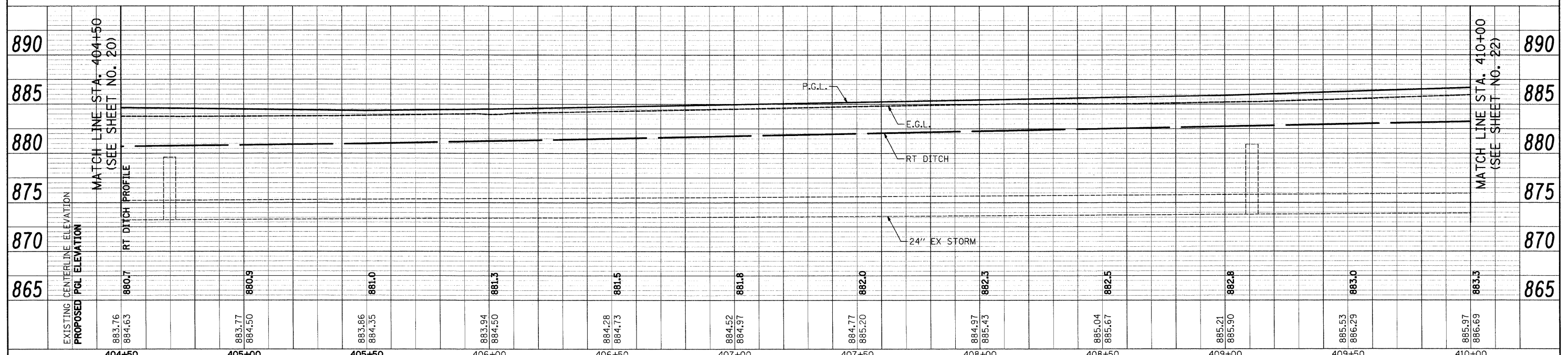
PLAN	SURVEYED	BY	DATE
	NOTED		
	CHECKED		
	REVISIONS		
	NO. OF WAY CHECKED		
	CADD FILE NAME		

PROFILE	SURVEYED	BY	DATE
	NOTED		
	CHECKED		
	REVISIONS		
	NO. OF WAY CHECKED		
	STRUCTURE NOTATIONS CHK'D		

- 7 STA. 405+50, 37.0' RT. PRC FLAR END SEC 12" INV = 881.00 (12" N)
- 8 STA. 405+50, 19.0' RT. RD CB 4 DIA T11F&G RIM = 883.97 INV = 881.14 (12" S) INV = 881.24 (12" W)
- 9 STA. 405+35, 19.0' RT. INLETS TA T11F&G RIM = 884.02 INV = 881.36 (12" E)
- 10 STA. 407+00, 35.7' RT. PRC FLAR END SEC 12" INV = 881.94 (12" N)
- 11 STA. 407+00, 19.0' RT. CB TC T11F&G RIM = 884.59 INV = 882.09 (12" S)
- 12 STA. 408+65, 35.7' RT. PRC FLAR END SEC 12" INV = 882.71 (12" N)
- 13 STA. 408+65, 19.0' RT. CB TC T11F&G RIM = 885.36 INV = 882.86 (12" S)
- 14 STA. 410+00, 35.7' RT. PRC FLAR END SEC 12" INV = 883.66 (12" N)
- 15 STA. 410+00, 19.0' RT. CB TC T11F&G RIM = 886.31 INV = 883.81 (12" S)
- 16 STA. 404+87.33, 17.24' LT. CB ADJUST EX RIM = 882.98 PR RIM = 884.20
- 17 STA. 405+50.84, 31.6' LT. INLETS TB T11F&G RIM = 883.08 INV = 876.18 (EX 12" W) INV = 876.17 (EX 12" E)
- 18 STA. 405+85.66, 31.4' LT. CB TA 4 DIA T11F&G RIM = 883.34 INV = 876.10 (EX 12" W) INV = 876.09 (EX 12" E)
- 19 STA. 407+47.12, 17.63' LT. CB ADJUST EX RIM = 883.93 PR RIM = 884.84
- 20 STA. 409+83.43, 17.20' LT. CB ADJUST EX RIM = 885.25 PR RIM = 886.22



- 3 8' - STORM SEW CL A 1, 12" @ 1.00% T.B.F. = 0.0 CU. YD.
- 4 12' - STORM SEW CL A 1, 12" @ 1.00% T.B.F. = 1.6 CU. YD.
- 5 9' - STORM SEW CL A 1, 12" @ 1.00% T.B.F. = 0.3 CU. YD.
- 6 9' - STORM SEW CL A 1, 12" @ 1.00% T.B.F. = 0.3 CU. YD.
- 7 9' - STORM SEW CL A 1, 12" @ 1.00% T.B.F. = 0.3 CU. YD.



FILE NAME = J:\2213\cad\sheet\2213.D&U.02.dgn	USER NAME = ead	DESIGNED - EAD	REVISED -	STATE OF ILLINOIS	REED ROAD - DRAINAGE AND UTILITIES	F.A.U. RTE. 4075	SECTION 08-00032-00-RS	COUNTY MCHENRY	TOTAL SHEETS 49	SHEET NO. 21
PLOT SCALE = 20.0000' / IN.	CHECKED - DNM	DATE - 5/1/09	REVISED -	DEPARTMENT OF TRANSPORTATION	SCALE 1"=20'	SHEET NO. 2 OF 6 SHEETS STA. 404+50 TO STA. 410+00		CONTRACT NO. 63193		
PLOT DATE = 5/1/2009					FED. ROAD DIST. NO. ILLINOIS FED. AID PROJECT					