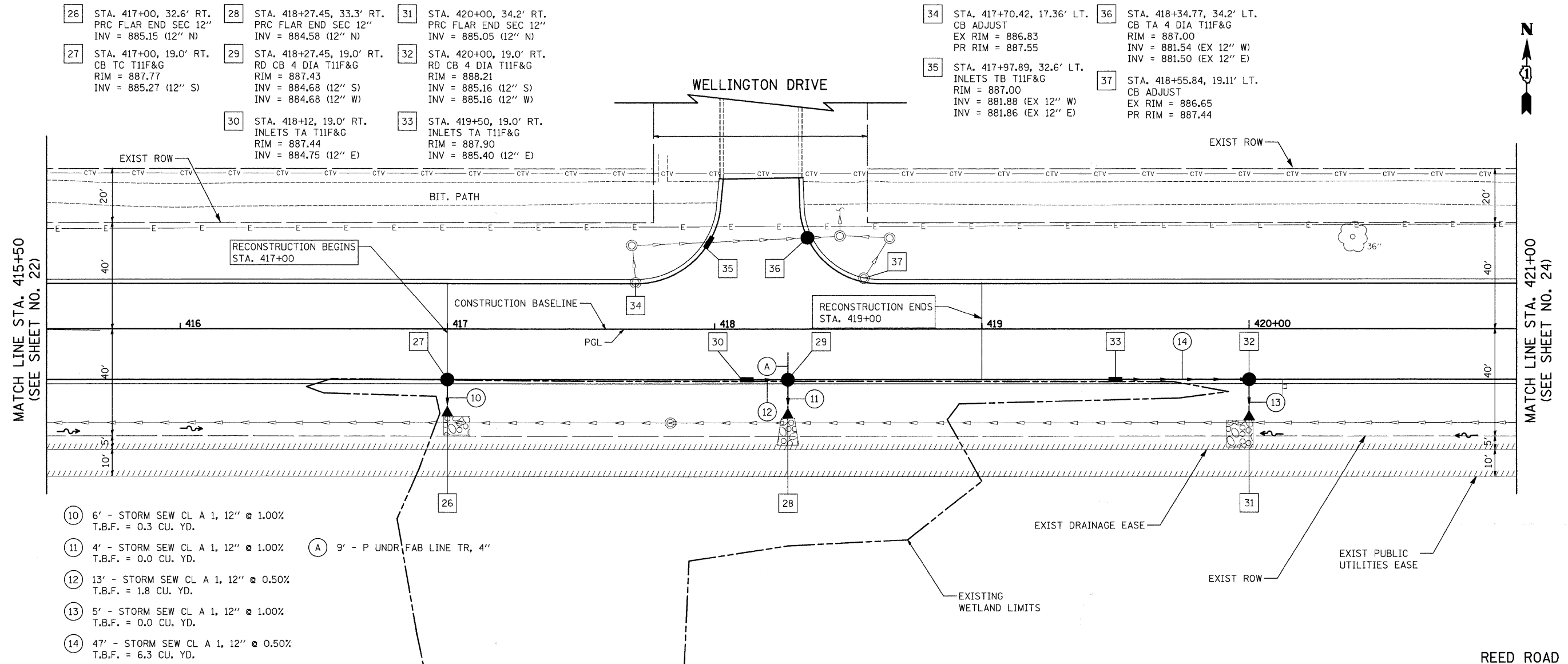
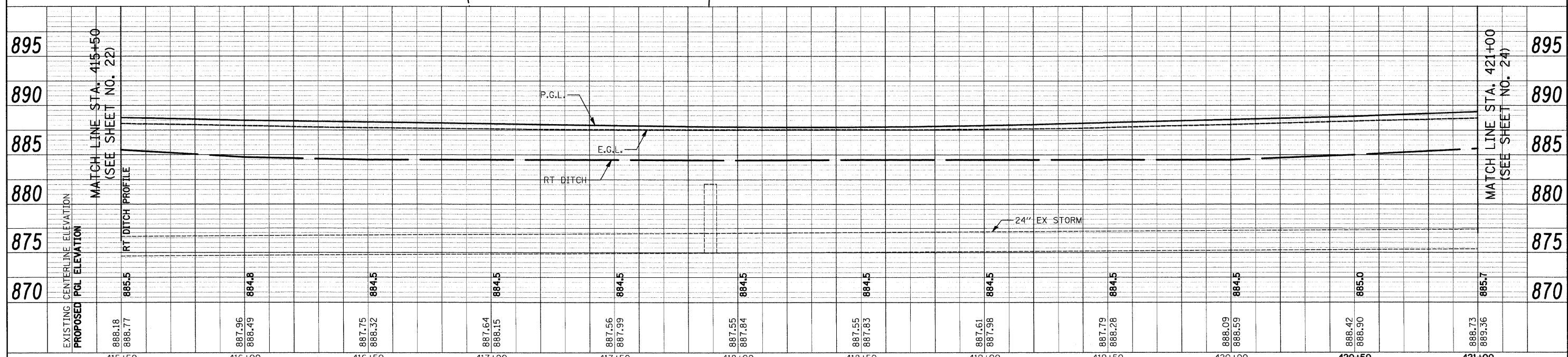


PLAN	SURVEYED	BY	DATE
	NOTED		
	CHECKED		
	REVISION		
	NO. OF WAY CHECKED		
	CADD FILE NAME		
	NO.		

PROFILE	SURVEYED	BY	DATE
	NOTED		
	CHECKED		
	REVISION		
	STRUCTURE NOTATIONS		
	NO.		



- 26 STA. 417+00, 32.6' RT. PRC FLAR END SEC 12" INV = 885.15 (12" N)
 - 27 STA. 417+00, 19.0' RT. CB TC T11F&G RIM = 887.77 INV = 885.27 (12" S)
 - 28 STA. 418+27.45, 33.3' RT. PRC FLAR END SEC 12" INV = 884.58 (12" N)
 - 29 STA. 418+27.45, 19.0' RT. RD CB 4 DIA T11F&G RIM = 887.43 INV = 884.68 (12" S) INV = 884.68 (12" W)
 - 30 STA. 418+12, 19.0' RT. INLETS TA T11F&G RIM = 887.44 INV = 884.75 (12" E)
 - 31 STA. 420+00, 34.2' RT. PRC FLAR END SEC 12" INV = 885.05 (12" N)
 - 32 STA. 420+00, 19.0' RT. RD CB 4 DIA T11F&G RIM = 888.21 INV = 885.16 (12" S) INV = 885.16 (12" W)
 - 33 STA. 419+50, 19.0' RT. INLETS TA T11F&G RIM = 887.90 INV = 885.40 (12" E)
 - 34 STA. 417+70.42, 17.36' LT. CB ADJUST EX RIM = 886.83 PR RIM = 887.55
 - 35 STA. 417+97.89, 32.6' LT. INLETS TB T11F&G RIM = 887.00 INV = 881.88 (EX 12" W) INV = 881.86 (EX 12" E)
 - 36 STA. 418+34.77, 34.2' LT. CB TA 4 DIA T11F&G RIM = 887.00 INV = 881.54 (EX 12" W) INV = 881.50 (EX 12" E)
 - 37 STA. 418+55.84, 19.11' LT. CB ADJUST EX RIM = 886.65 PR RIM = 887.44
- 10 6' - STORM SEW CL A 1, 12" @ 1.00% T.B.F. = 0.3 CU. YD.
 - 11 4' - STORM SEW CL A 1, 12" @ 1.00% T.B.F. = 0.0 CU. YD.
 - 12 13' - STORM SEW CL A 1, 12" @ 0.50% T.B.F. = 1.8 CU. YD.
 - 13 5' - STORM SEW CL A 1, 12" @ 1.00% T.B.F. = 0.0 CU. YD.
 - 14 47' - STORM SEW CL A 1, 12" @ 0.50% T.B.F. = 6.3 CU. YD.
 - (A) 9' - P UNDR FAB LINE TR, 4"



EXISTING CENTERLINE ELEVATION	PROPOSED P.G.L. ELEVATION	RT DITCH PROFILE	415+50	416+00	416+50	417+00	417+50	418+00	418+50	419+00	419+50	420+00	420+50	421+00
			888.18	887.96	887.75	887.64	887.56	887.55	887.55	887.61	887.79	888.09	888.42	888.73
			888.77	888.49	888.32	888.15	887.99	887.84	887.83	887.98	888.28	888.59	888.90	889.36
			885.5	884.8	884.5	884.5	884.5	884.5	884.5	884.5	884.5	884.5	885.0	885.7