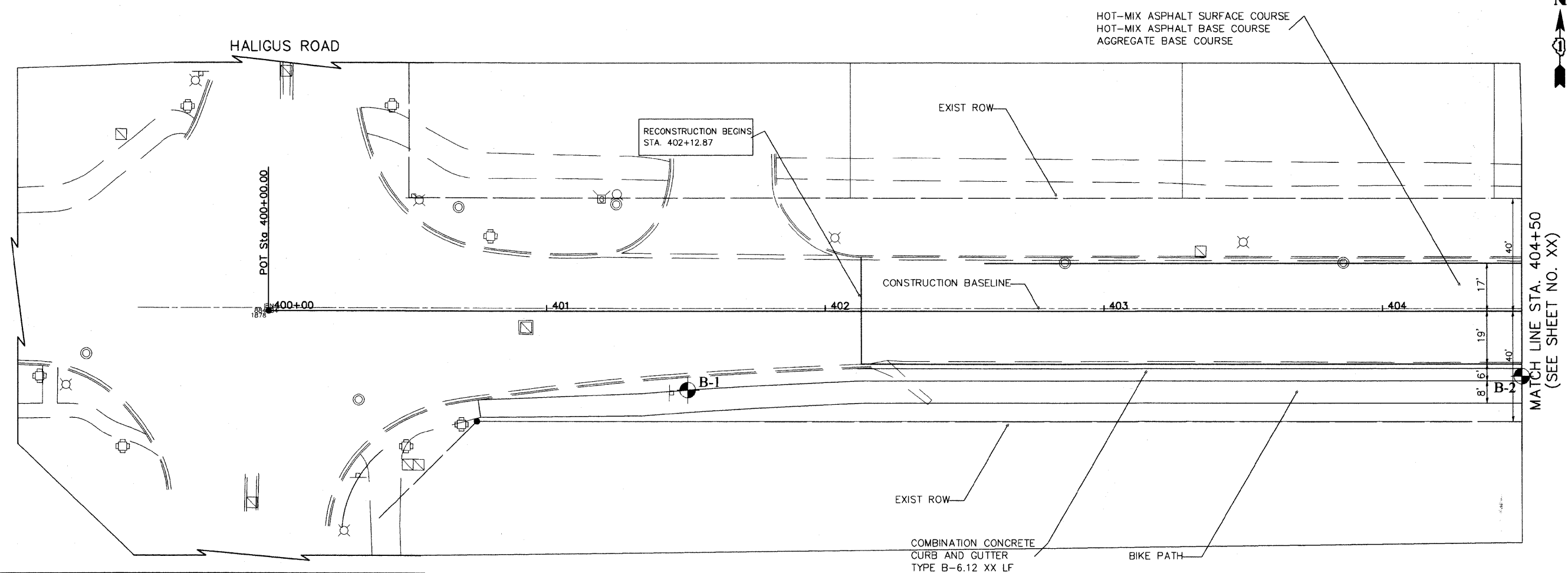


PLAN	SURVEYED	DATE
	ALIGNED	
	CHECKED	
	BY	
	NO. OF WAY CHECKED	
	NO.	
	DATE	

PROFILE	SURVEYED	DATE
	PLOTTED	
	CHECKED	
	BY	
	NO. OF WAY CHECKED	
	NO.	
	DATE	

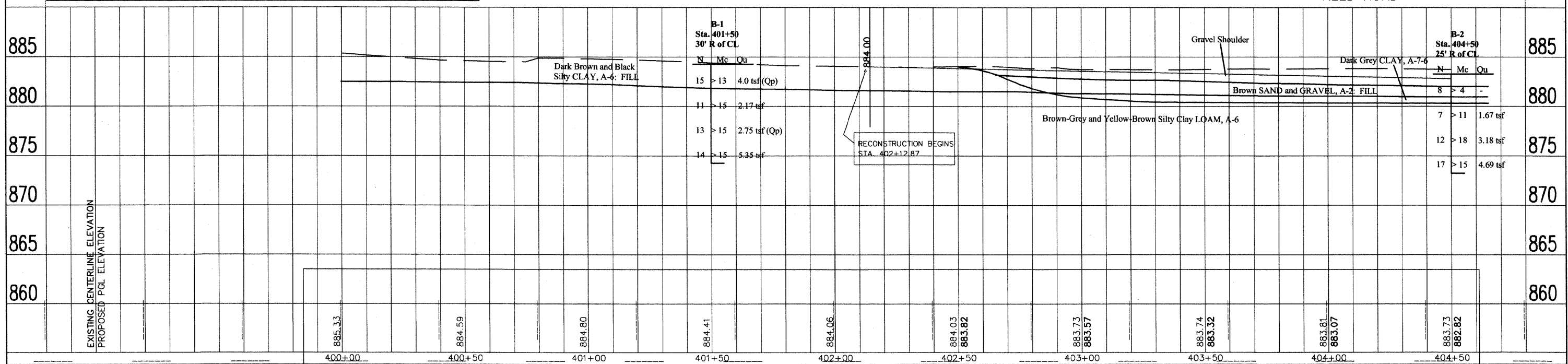


SOIL PROFILE DRAWING
MIDLAND STANDARD ENGINEERING & TESTING, INC.
REED ROAD IMPROVEMENTS
HUNTLEY, ILLINOIS
MSET PROJECT NO. 88298
JANUARY 2009

LEGEND

◆ BORING NUMBER ✦ CORE NUMBER

N = Standard Penetration Resistance, blows per foot
Mc = Moisture Content
Qu = Unconfined Compressive Strength, tons per square foot (tsf)
Qp = Unconfined Compressive Strength, tons per square foot (tsf)
* = Sample tested for Classification
W = Water Level During Drilling



FILE NAME =	USER NAME = \$USER\$	DESIGNED = EAD	REVISED =	STATE OF ILLINOIS DEPARTMENT OF TRANSPORTATION	REED ROAD - PLAN & PROFILE	F.A. RTE.	SECTION	COUNTY	TOTAL SHEETS	SHEET NO.
\$FILEL\$		DRAWN = EDS	REVISED =			08-00032-00-RS	MCHENRY	49	27	
		CHECKED = DNM	REVISED =			CONTRACT NO. 63193				
		DATE = 5/1/09	REVISED =			FED. ROAD DIST. NO. ILLINOIS FED. AID PROJECT				
				SCALE 1"=20'		SHEET NO. 1 OF SHEETS		STA. 400+00 TO STA. 404+50		