

PLAN	SURVEYED	DATE
	PLOTTED	
	CHECKED	
	BY	
	NO.	
	DATE	

PROFILE	SURVEYED	DATE
	PLOTTED	
	CHECKED	
	BY	
	NO.	
	DATE	

NOTES:

- EXISTING PAVEMENT TO BE REMOVED FROM EDGE OF PAVEMENT TO EDGE OF PAVEMENT AS SHOWN ON THE TYPICAL SECTIONS. AGGREGATE SHOULDER REMOVAL SHALL BE PAID FOR AS "EARTH EXCAVATION".
- TRIM, SAW, OR OTHERWISE REMOVE ANY LOOSE, CRACKED OR UNSOUND EXISTING PAVEMENT TO PROVIDE A CLEAN FULL-DEPTH EDGE OF PAVEMENT SUBJECT TO APPROVAL OF THE MCHENRY COUNTY DIVISION OF TRANSPORTATION (COST INCLUDED IN THE COST OF THE HOT-MIX ASPHALT BEING PLACED).
- USE IDOT STANDARD 601001-3 FOR PIPE UNDERDRAIN INSTALLATION.

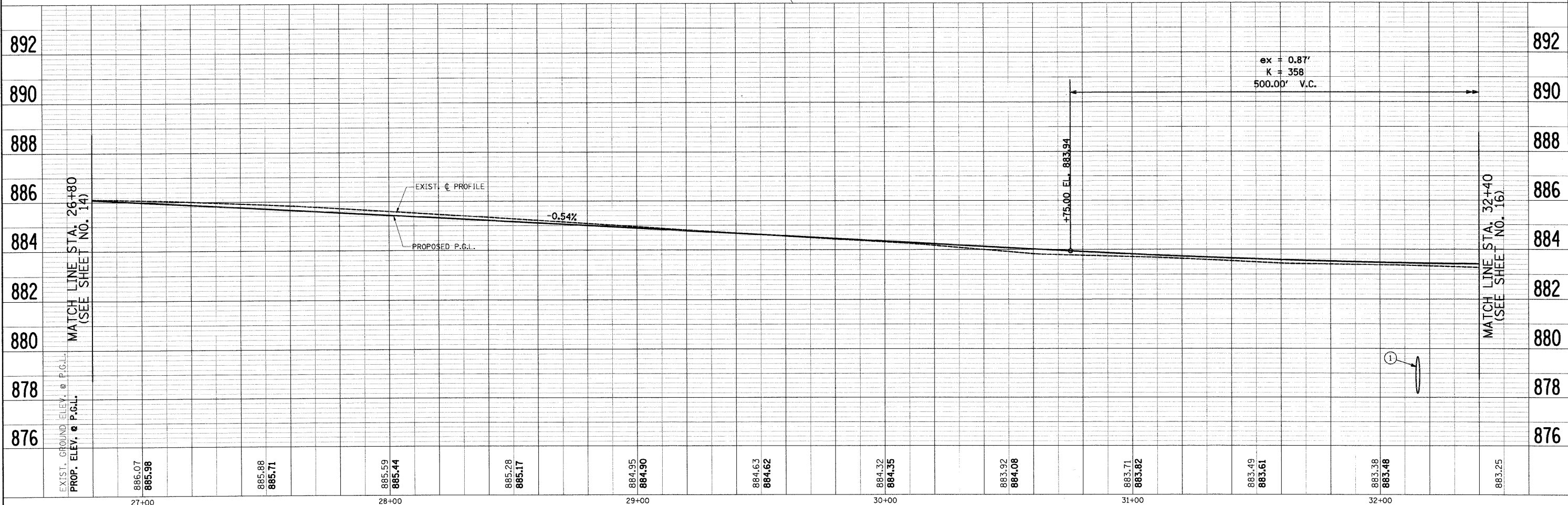
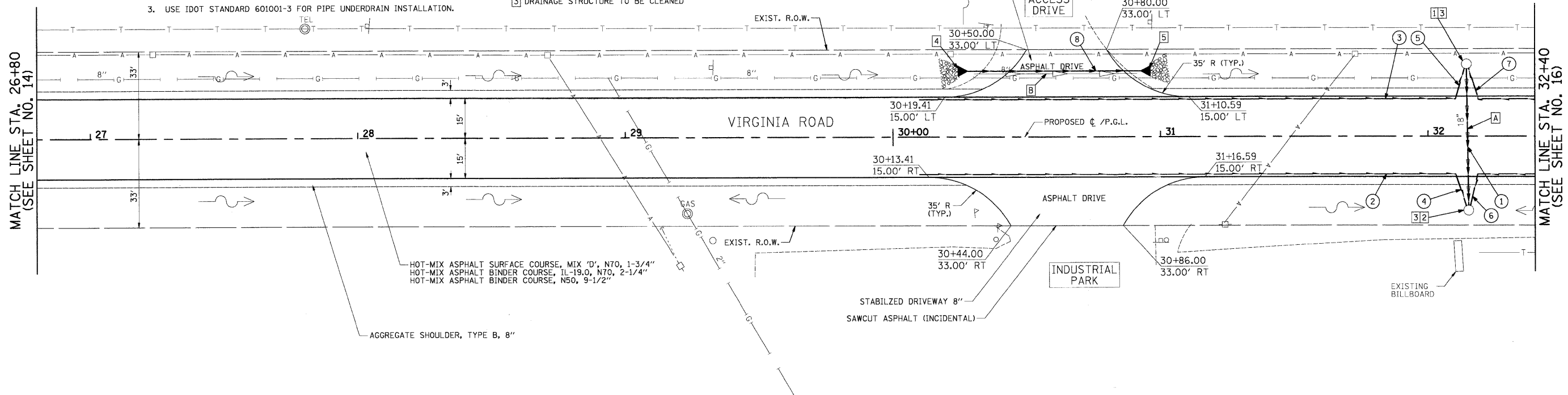
- STA. 32+15.17, 27.40' RT. EXIST. CB FRAME & LID TO BE ADJUSTED
RIM = 880.55
INV. = 878.17 (SW)
INV. = 878.50 (W & S)
- STA. 32+13.96, 28.82' LT. EXIST. CB FRAME & LID TO BE ADJUSTED
RIM = 879.95
INV. = 877.21 (NE)
INV. = 877.90 (N & E)
- DRAINAGE STRUCTURE TO BE CLEANED

- STA. 30+27, 25' LT. PRC FLARED END SECTION, 15" WITH RIPRAP
INV. = 881.40
- STA. 30+93, 25' LT. PRC FLARED END SECTION, 15" WITH RIPRAP
INV. = 881.00

- 50' - 18" PIPE CULVERT REMOVAL
- 60' - 8" PIPE CULVERT REMOVAL

- 50' - 18" RC PIPE CULVERT, CLASS A, TYPE 2
TBF = 12 CY
- 200' - 4" PIPE UNDERDRAIN
TBF = 7 CY
- 200' - 4" PIPE UNDERDRAIN
TBF = 7 CY
- 12' - 4" PIPE UNDERDRAIN (SPECIAL)
TBF = 1 CY

- 12' - 4" PIPE UNDERDRAIN (SPECIAL)
TBF = 1 CY
- 12' - 4" PIPE UNDERDRAIN (SPECIAL)
TBF = 1 CY
- 12' - 4" PIPE UNDERDRAIN (SPECIAL)
TBF = 1 CY
- 70' - 15" RC PIPE CULVERT, CLASS A, TYPE 2
TBF = 7 CY



FILE NAME = J:\2211\oad\sheet\2211-sht-pp4.dgn	USER NAME = ara	DESIGNED - RJD	REVISED -	STATE OF ILLINOIS DEPARTMENT OF TRANSPORTATION	PLAN & PROFILE VIRGINIA ROAD	F.A. RTE. 0121	SECTION 03-00362-00-PV	COUNTY MCHENRY	TOTAL SHEETS 54	SHEET NO. 15	
PLOT SCALE = 20.00' / IN.	CHECKED - GAB	DRAWN - ARA	REVISED -			SCALE: 1"=20' SHEET NO. 4 OF 15 SHEETS STA. 26+80 TO STA. 32+40					
PLOT DATE = 5/27/2009	DATE - 5-28-09	CHECKED - GAB	REVISED -			CONTRACT NO. 63195					
		DATE - 5-28-09	REVISED -			FED. ROAD DIST. NO. ILLINOIS FED. AID PROJECT M-9003(255)					