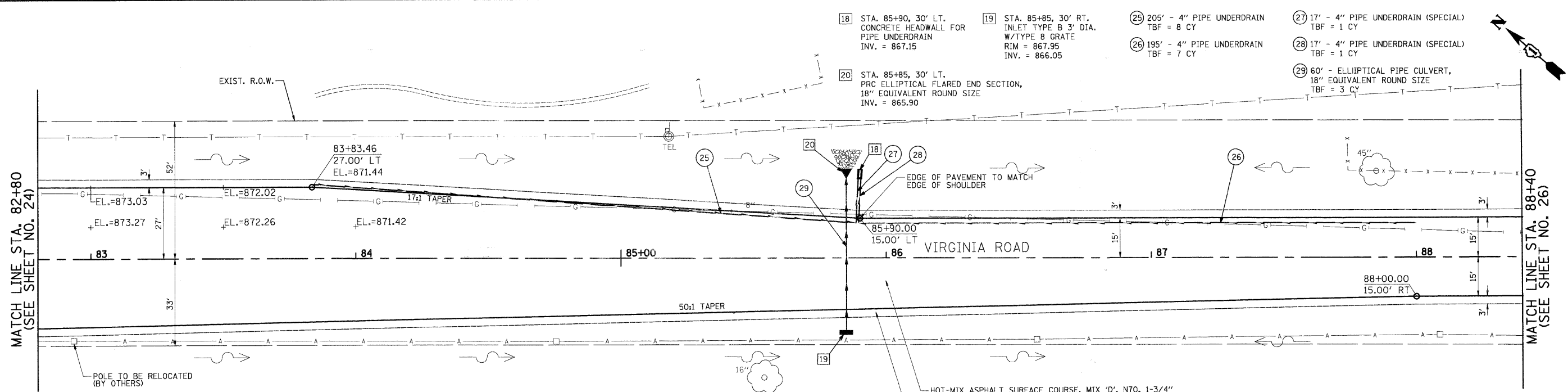


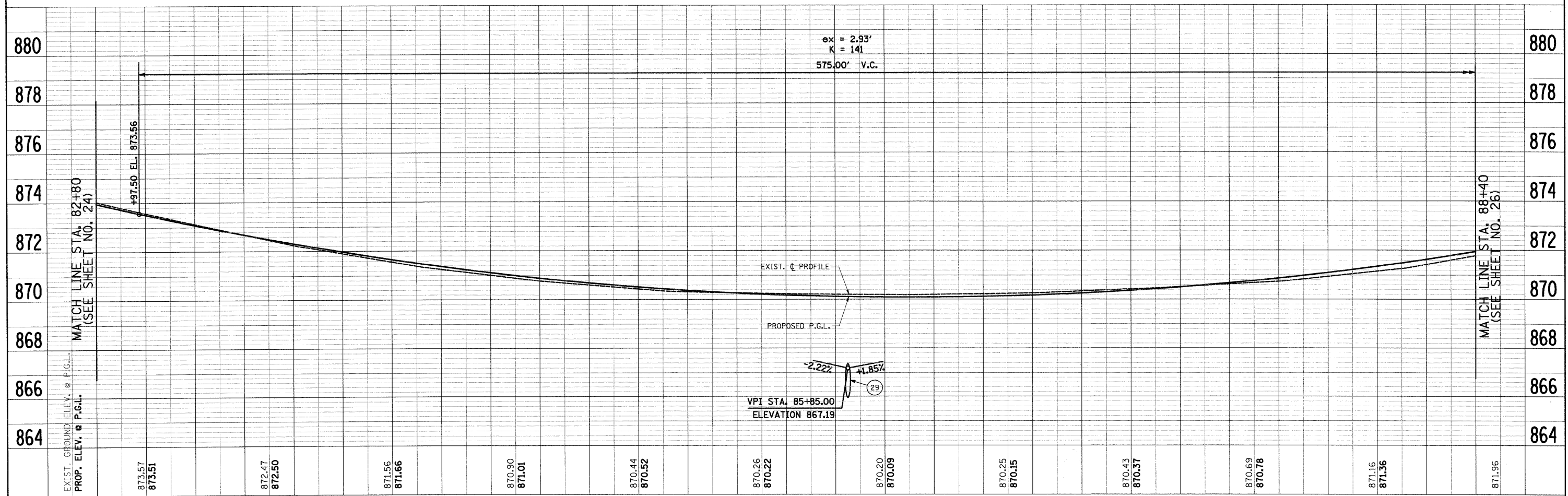
PLAN	SURVEYED	DATE
	ALIGNED	BY
	CHECKED	
	RT. OF WAY	
	CHECKED	
	PAID FILE NAME	
	NO.	

PROFILE	SURVEYED	DATE
	PLOTTED	BY
	CHECKED	
	BY	
	NO.	



- NOTES:**
- EXISTING PAVEMENT TO BE REMOVED FROM EDGE OF PAVEMENT TO EDGE OF PAVEMENT AS SHOWN ON THE TYPICAL SECTIONS. AGGREGATE SHOULDER REMOVAL SHALL BE PAID FOR AS "EARTH EXCAVATION".
 - TRIM, SAW, OR OTHERWISE REMOVE ANY LOOSE, CRACKED OR UNSOUND EXISTING PAVEMENT TO PROVIDE A CLEAN FULL-DEPTH EDGE OF PAVEMENT SUBJECT TO APPROVAL OF THE MCHENRY COUNTY DIVISION OF TRANSPORTATION (COST INCLUDED IN THE COST OF THE HOT-MIX ASPHALT BEING PLACED).

HOT-MIX ASPHALT SURFACE COURSE, MIX 'D', N70, 1-3/4"
HOT-MIX ASPHALT BINDER COURSE, IL-19.0, N70, 2-1/4"
HOT-MIX ASPHALT BINDER COURSE, N50, 9-1/2"
AGGREGATE SHOULDER, TYPE B, 8"



FILE NAME = J:\2211\road\sheet\2211-sht-pp14.dgn	USER NAME = ara	DESIGNED - RJD	REVISED -	STATE OF ILLINOIS DEPARTMENT OF TRANSPORTATION	PLAN & PROFILE VIRGINIA ROAD	F.A. RTE. 0121	SECTION 03-00362-00-PV	COUNTY MCHENRY	TOTAL SHEETS 54	SHEET NO. 25	
PLOT SCALE = 20.00' / IN.	CHECKED - GAB	REVISIED -	SCALE: 1"=20'			SHEET NO. 14 OF 15 SHEETS	STA. 82+80 TO STA. 88+40	CONTRACT NO. 63195		ILLINOIS FED. AID PROJECT: M-9003(255)	
PLOT DATE = 5/27/2009	DATE - 5-28-09	REVISED -									