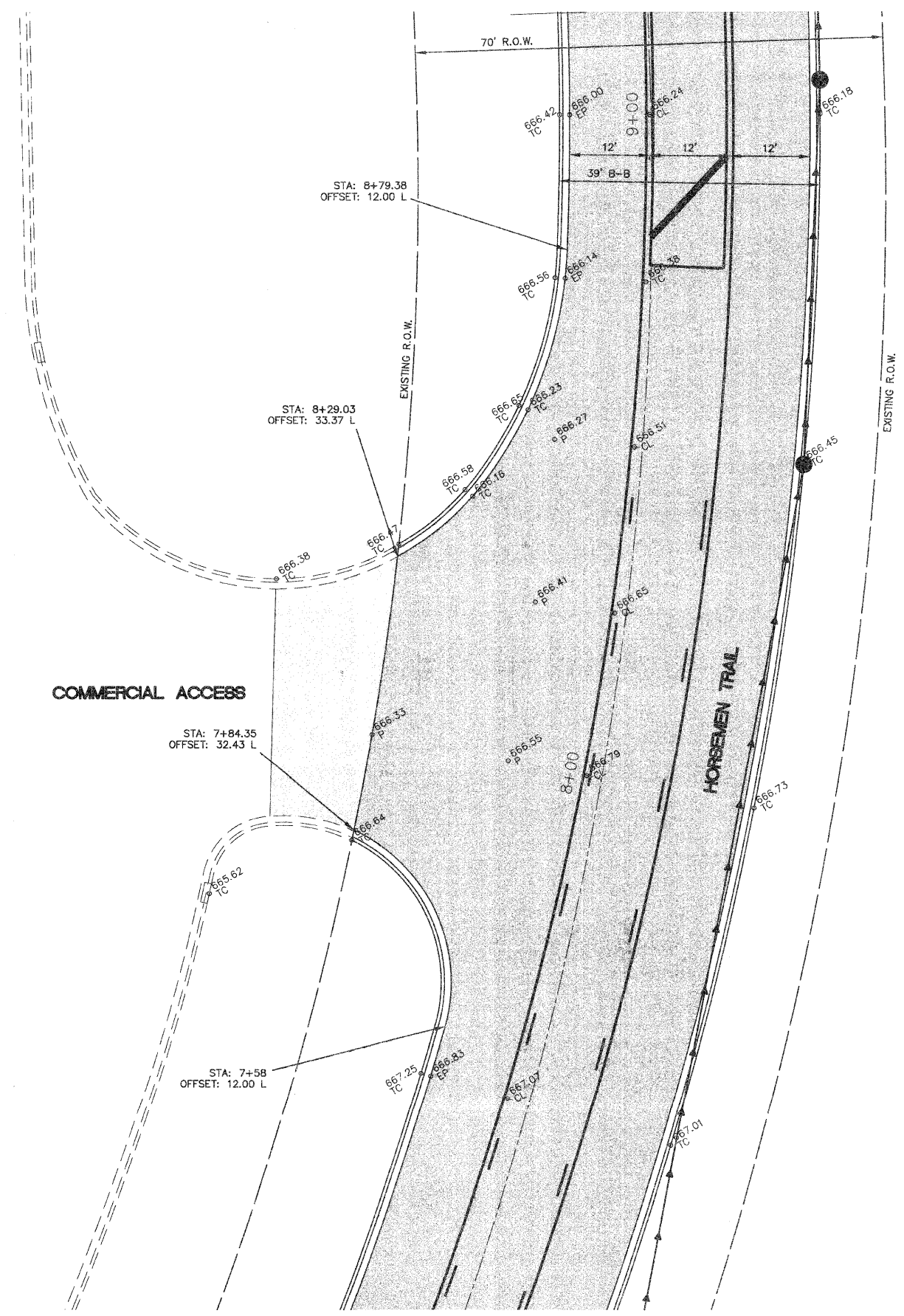
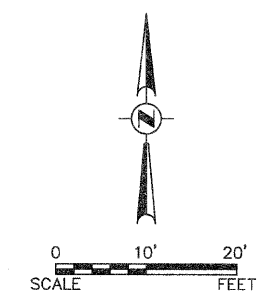




F.A.U. RTE.	SECTION	COUNTY	TOTAL SHEETS	SHEET NO.
1680	05-00038-00-PV	KANE/KENDALL	130	56
STA.		TO STA.		
FED. ROAD DIST. NO. -		ILLINOIS	FED. AID PROJECT	



PLAN	DATE
NO.	
BY	
REVISIONS	
PLOTTED	
CHECKED	
DATE	

PROFILE	DATE
NO.	
BY	
REVISIONS	
PLOTTED	
CHECKED	
DATE	

Plotted: June 26, 2009 @ 8:01 AM By: Kris Pung - Tab: 56 Intersection 22x34

REVISIONS	
NAME	DATE

ILLINOIS DEPARTMENT OF TRANSPORTATION

INTERSECTION DETAIL HORSEMEN TRAIL AND COMMERCIAL ACCESS

SCALE: DATE: 03-26-09

DRAWN BY: KKP
CHECKED BY: TVW

P:\H:\SOSKPROJ\060785\DWG\DWG_FINAL_ENG\000755-INTER