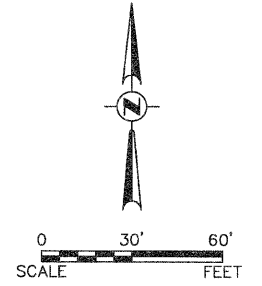


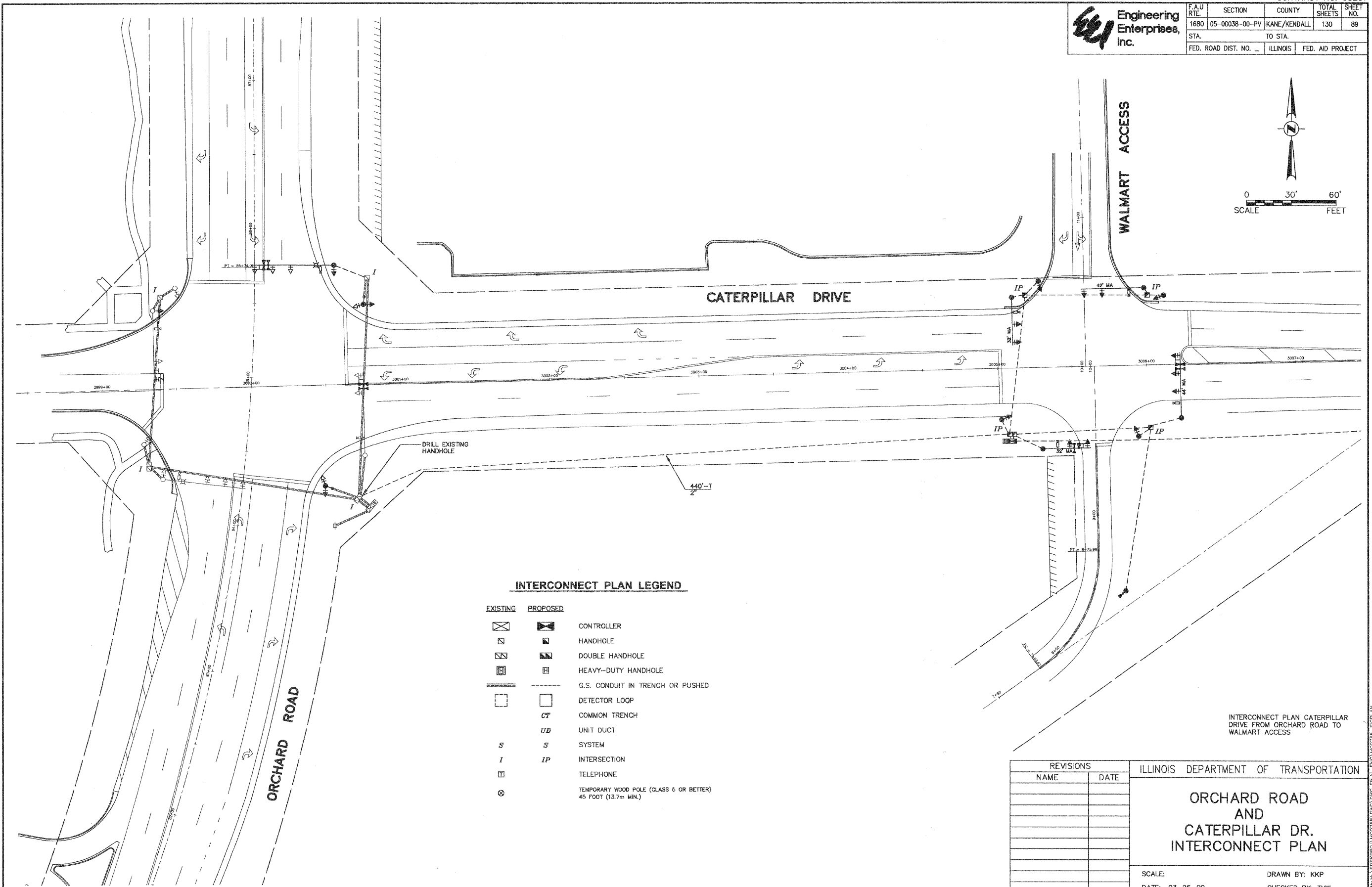
Engineering Enterprises, Inc.

F.A.U. RTE.	SECTION	COUNTY	TOTAL SHEETS	SHEET NO.
1680	05-00038-00-PV	KANE/KENDALL	130	89
STA.		TO STA.		
FED. ROAD DIST. NO. _		ILLINOIS	FED. AID PROJECT	



PLAN	REVISIONS	DATE
NOTE BOOK NO.	PLOTTED	
	ALIGNMENT CHECKED	
	CONSTRUCTION CHECKED	
	CADD FILE NAME	

PROFILE	REVISIONS	DATE
NOTE BOOK NO.	PLOTTED	
	GRADES CHECKED	
	STRUCTURE NOTATION CHECKED	



INTERCONNECT PLAN LEGEND

EXISTING	PROPOSED	
		CONTROLLER
		HANDHOLE
		DOUBLE HANDHOLE
		HEAVY-DUTY HANDHOLE
		G.S. CONDUIT IN TRENCH OR PUSHED
		DETECTOR LOOP
		COMMON TRENCH
		UNIT DUCT
		SYSTEM
		INTERSECTION
		TELEPHONE
		TEMPORARY WOOD POLE (CLASS 5 OR BETTER) 45 FOOT (13.7m MIN.)

INTERCONNECT PLAN CATERPILLAR DRIVE FROM ORCHARD ROAD TO WALMART ACCESS

REVISIONS	
NAME	DATE

ILLINOIS DEPARTMENT OF TRANSPORTATION

ORCHARD ROAD AND CATERPILLAR DR. INTERCONNECT PLAN

SCALE: _____ DRAWN BY: KKP
DATE: 03-26-09 CHECKED BY: TVW