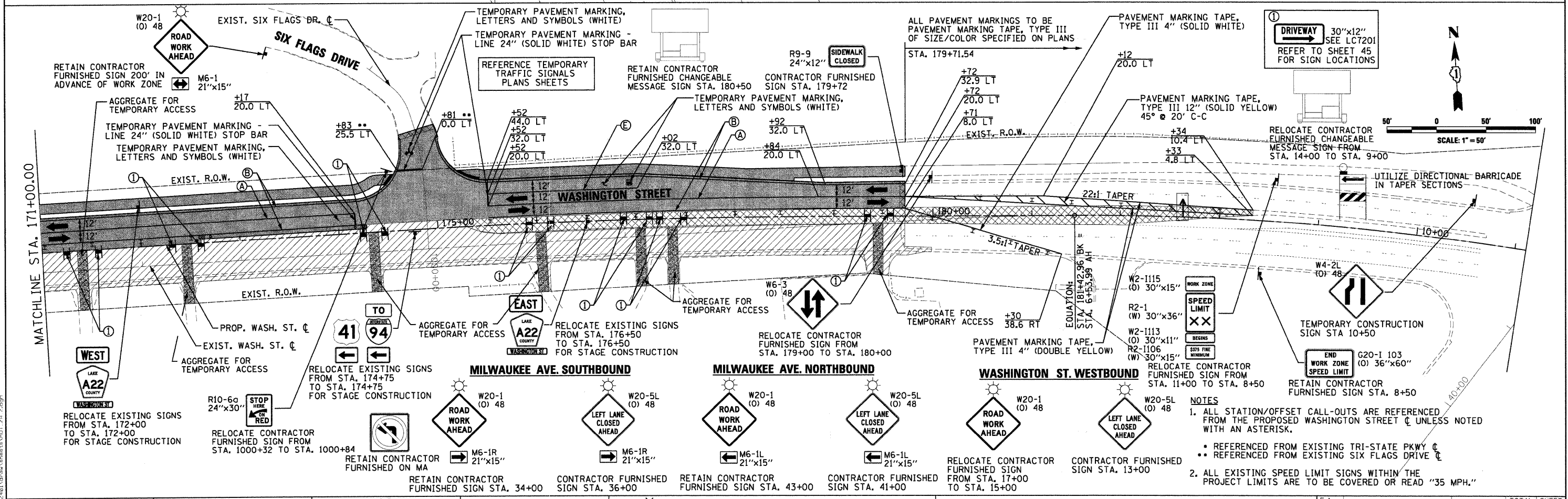
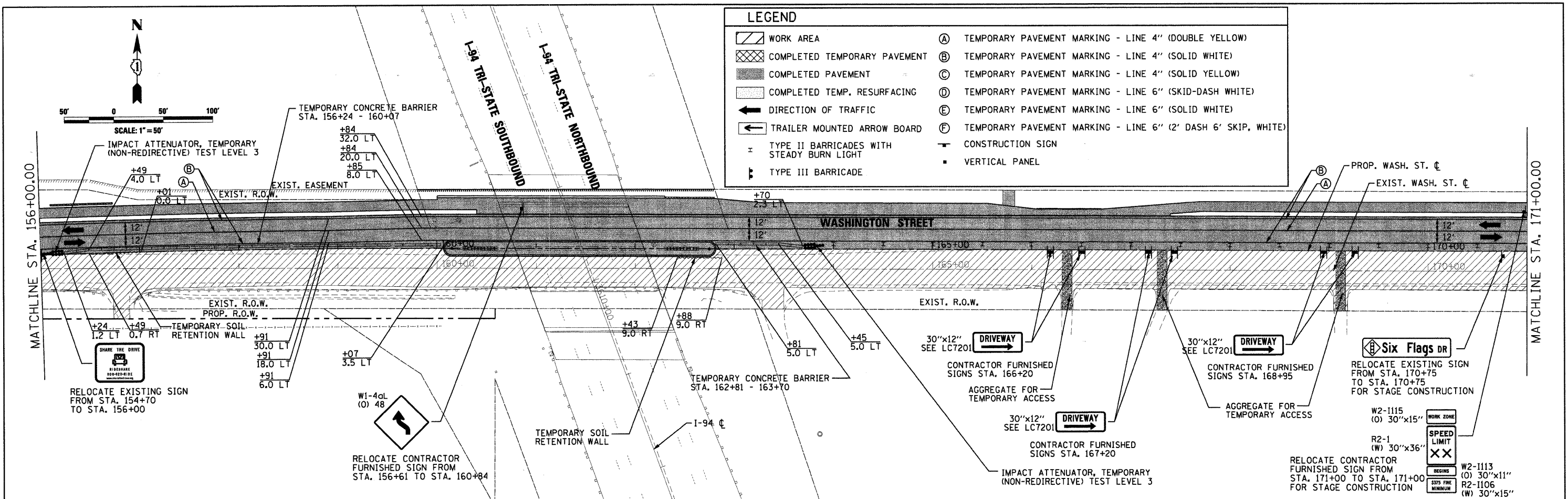


LEGEND

	WORK AREA	(A)	TEMPORARY PAVEMENT MARKING - LINE 4" (DOUBLE YELLOW)
	COMPLETED TEMPORARY PAVEMENT	(B)	TEMPORARY PAVEMENT MARKING - LINE 4" (SOLID WHITE)
	COMPLETED PAVEMENT	(C)	TEMPORARY PAVEMENT MARKING - LINE 4" (SOLID YELLOW)
	COMPLETED TEMP. RESURFACING	(D)	TEMPORARY PAVEMENT MARKING - LINE 6" (SKID-DASH WHITE)
	DIRECTION OF TRAFFIC	(E)	TEMPORARY PAVEMENT MARKING - LINE 6" (SOLID WHITE)
	TRAILER MOUNTED ARROW BOARD	(F)	TEMPORARY PAVEMENT MARKING - LINE 6" (2' DASH 6' SKIP, WHITE)
	TYPE II BARRICADES WITH STEADY BURN LIGHT		CONSTRUCTION SIGN
	TYPE III BARRICADE		VERTICAL PANEL



- #### NOTES
- ALL STATION/OFFSET CALL-OUTS ARE REFERENCED FROM THE PROPOSED WASHINGTON STREET CENTERLINE UNLESS NOTED WITH AN ASTERISK.
 - REFERENCED FROM EXISTING TRI-STATE PKWY CENTERLINE UNLESS NOTED WITH AN ASTERISK.
 - ALL EXISTING SPEED LIMIT SIGNS WITHIN THE PROJECT LIMITS ARE TO BE COVERED OR READ "35 MPH."

CMT CRAWFORD, MURPHY & TILLY, INC. CONSULTING ENGINEERS License No. 184-00063	USER NAME = Monica Grimm DESIGNED - SJP DRAWN - SJP CHECKED - KDN DATE - 07/15/09	REVISIONS REVISIONS REVISIONS REVISIONS	Lake County Division of Transportation	MAINTENANCE OF TRAFFIC STAGE 2A PLAN SCALE: 50'=1" SHEET NO. 17 OF 24 SHEETS STA. 156+00 TO STA. 11+11.03	F.A. RTE. 1016 SECTION 02-00110-12-WR COUNTY LAKE TOTAL SHEETS 206 SHEET NO. 44 CONTRACT NO. 63209
	FEDERAL ROAD DIST. NO. 1 [ILLINOIS] FED. AID PROJECT				