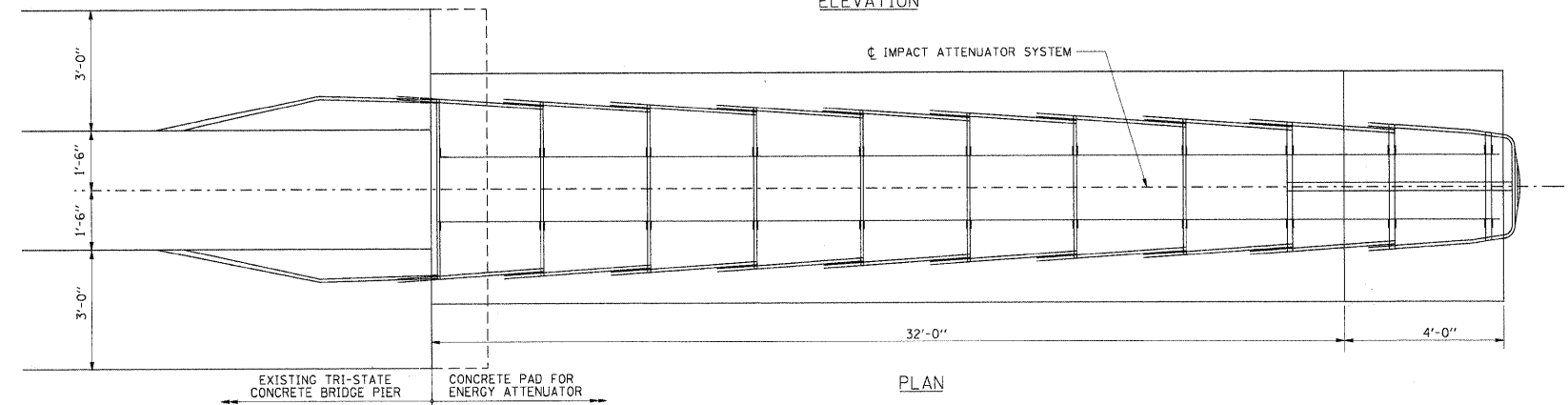
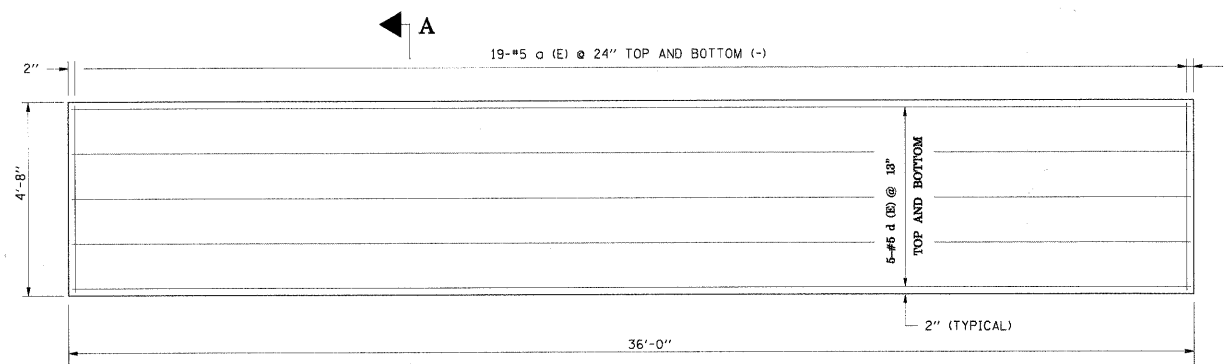


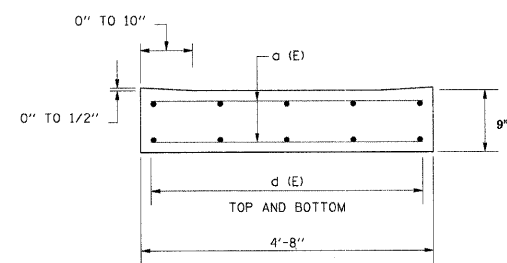
ELEVATION



PLAN



REINFORCING PLAN



SECTION A-A

NOTES:

1. THE IMPACT ATTENUATOR SYSTEM SHALL BE ACCEPTED AT TEST LEVEL 3 OF NATIONAL COOPERATIVE HIGHWAY RESEARCH PROGRAM REPORT 350 (NCHRP 350) CRITERIA.
2. IMPACT ATTENUATOR SYSTEM AND INSTALLATION TO BE PAID AT THE CONTRACT UNIT PRICE FOR EACH AS "IMPACT ATTENUATORS (SEVERE USE, NARROW), TEST LEVEL 3".
3. REINFORCEMENT BARS DESIGNATED "E" SHALL BE EPOXY COATED.
4. REINFORCEMENT BARS SHALL CONFORM TO THE REQUIREMENTS OF AASHTO M-31, GRADE 60, DEFORMED BARS. REINFORCEMENT BARS SHALL BE PAID FOR AS "REINFORCEMENT BARS, EPOXY COATED".
5. CROSS SLOPE OF PAD SHALL NOT EXCEED 8% AND NOT VARY MORE THAN 2% FROM FRONT TO BACK.
6. THE IMPACT ATTENUATOR PAD SHALL BE PAID AS "CONCRETE STRUCTURES".
7. QUANTITIES SHOWN IN THE BILL OF MATERIALS AND BAR SCHEDULE REFLECT BOTH IMPACT ATTENUATOR LOCATIONS.

BILL OF MATERIAL			
ITEM	UNIT	QUANTITY	PAD THICKNESS
CONCRETE STRUCTURES (50800225)	CU YD	12.4	9"
REINFORCEMENT BARS, EPOXY COATED (50800205)	POUND	1088	-
IMPACT ATTENUATORS (SEVERE USE, NARROW), TEST LEVEL 3 (20080070)	EACH	2	-

BAR SCHEDULE				
BAR	NO.	SIZE	LENGTH	SHAPE
a (E)	76	#5	4'-4"	-
d (E)	20	#5	35'-8"	-

FILE NAME = I:\Lakeco\0822401\Drawings\Sheets\CD_01.dwg



USER NAME = Steve Prange	DESIGNED - SJP	REVISED -
PLOT SCALE = 20.0000' / IN.	DRAWN - SJP	REVISED -
PLOT DATE = 05/29/09	CHECKED - KDN	REVISED -
	DATE - 05/29/09	REVISED -



CONSTRUCTION DETAILS

SCALE: N.T.S. SHEET NO. 1 OF 3 SHEETS STA. N/A TO STA. N/A

F.A. RTE.	SECTION	COUNTY	TOTAL SHEETS	SHEET NO.
1016	02-00110-12-WR	LAKE	206	67
CONTRACT NO. 63209				
FED. ROAD DIST. NO. 1 ILLINOIS FED. AID PROJECT				