

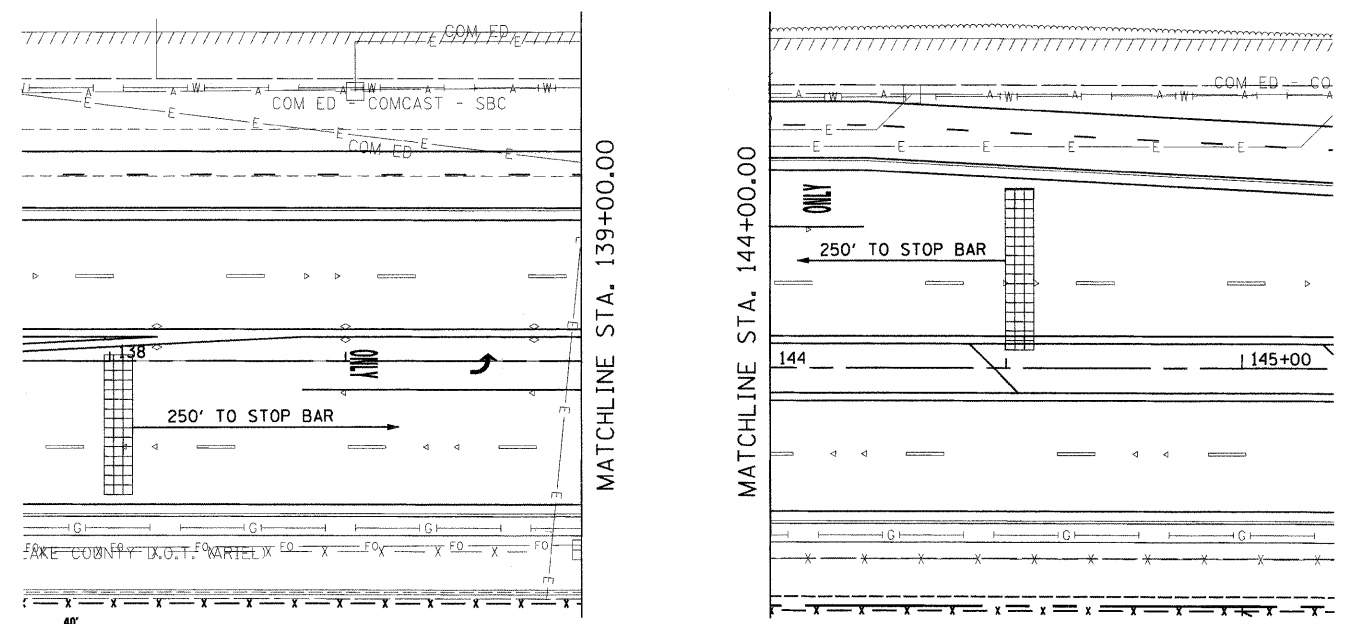
TRAFFIC SIGNAL LEGEND

	PROPOSED	EXISTING
CONTROLLER		
SERVICE INSTALLATION		
SIGNAL HEAD		
SIGNAL HEAD WITH BACKPLATE		
SIGNAL HEAD, PEDESTRIAN		
SIGNAL POST		
MAST ARM ASSEMBLY AND POLE, STEEL		
MAST ARM ASSEMBLY AND POLE, ALUMINUM		
UNIT DUCT		
COMBINATION MAST ARM ASSEMBLY AND POLE, STEEL WITH LUMINAIRE		
UNINTERRUPTABLE POWER SUPPLY		
HANDHOLE		
HEAVY DUTY HANDHOLE		
DOUBLE HANDHOLE		
G.S. CONDUIT IN TRENCH (T) OR PUSHED (P)		
PEDESTRIAN PUSH BUTTON DETECTOR		
DETECTOR LOOP		
CAST IRON JUNCTION BOX		
EMERGENCY VEHICLE SYSTEM DETECTOR		
CONFIRMATION BEACON		
SIGNAL HEAD OPTICALLY PROGRAMMED		
CONDUIT SPLICE		
WOOD POLE		
RACEWAY FOR MAGNETIC DETECTOR, TYPE I OR TYPE II		
VEHICLE DETECTOR, NON COMPENSATED MAGNETIC TYPE		
RAILROAD CONTROL CABINET		
IMAGE SENSOR		
DOMED PAN/TILT/ZOOM (PTZ) CAMERA		
L.E.D. INTERNALLY ILLUMINATED STREET NAME SIGN		
VIDEO DETECTOR ZONE (APPROXIMATE LOCATION)		

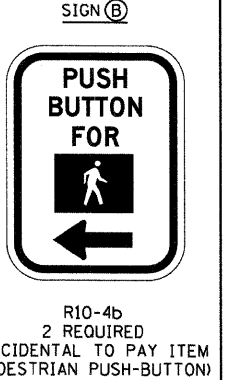
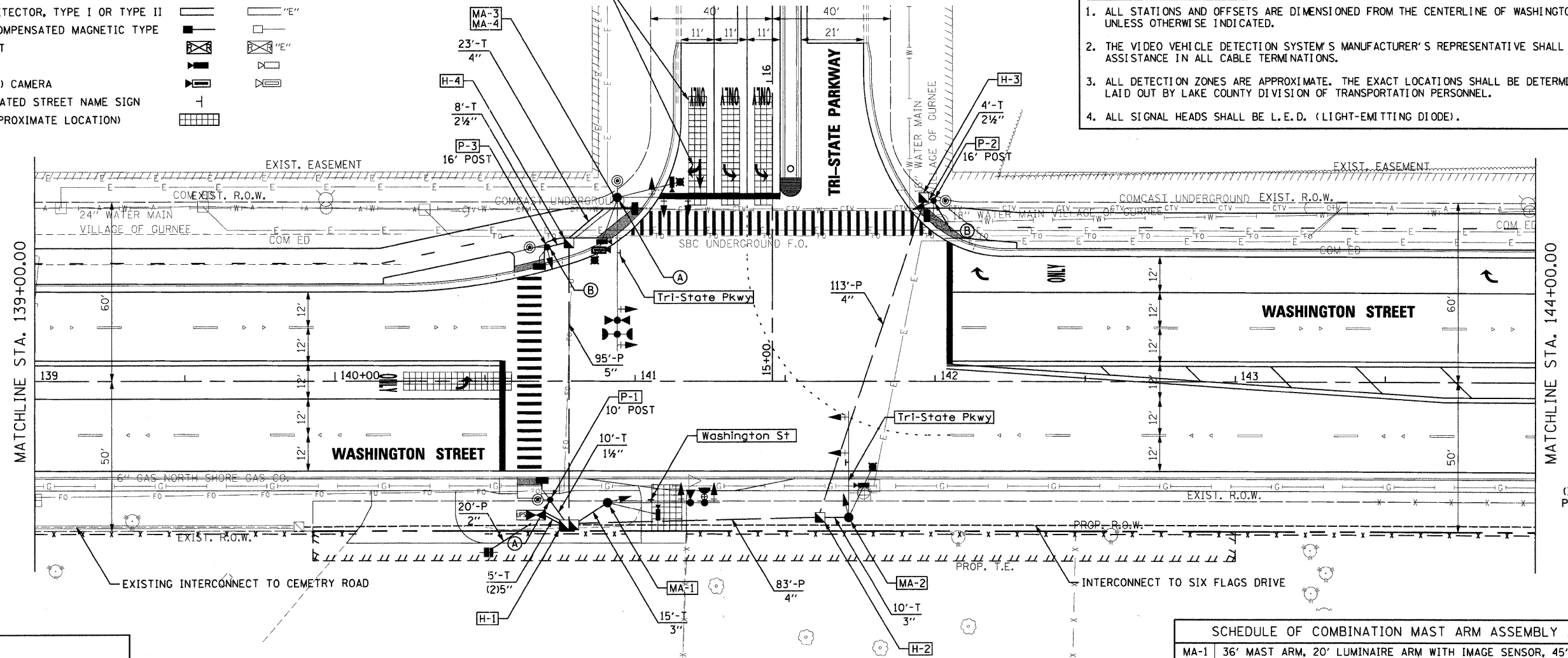
RESTORATION OF WORK AREA. RESTORATION OF THE TRAFFIC SIGNAL WORK AREA WILL BE INCIDENTAL TO THE RELATED PAY ITEM SUCH AS FOUNDATION, CONDUIT, HANDHOLE, TRENCH AND BACKFILL, ETC., AND NO EXTRA COMPENSATION WILL BE ALLOWED. ALL ROADWAY SURFACES SUCH AS SHOULDERS, MEDIANS, SIDEWALKS, PAVEMENT, ETC. SHALL BE REPLACED IN KIND. ALL DAMAGE TO MOWED LAWNS SHALL BE REPLACED WITH AN APPROVED SOD, AND ALL DAMAGE TO UNMOWED FIELDS SHALL BE SEEDING IN ACCORDANCE WITH STANDARD SPECIFICATIONS 252 AND 250 RESPECTIVELY.

STRUCTURE	STATION	OFFSET	POSSIBLE UTILITY CONFLICTS
H-1	140+78	48' RT	NONE
H-2	141+62	46' RT	NONE
H-3	141+96	61' LT	18" WATERMAIN, CTV
H-4	140+78	46' LT	FIBER OPTIC
P-1	140+72	40' RT	NONE
P-2	142+00	60' LT	18" WATERMAIN, CTV
P-3	140+71	45' LT	NONE
MA-1	140+91	41' RT	NONE
MA-2	141+71	46' RT	NONE
MA-3/MA-4	140+94	61' LT	18" WATERMAIN, CTV

PAVEMENT MARKING SYMBOLS SHOWN FOR INFORMATION (SEE PAVEMENT MARKING PLAN SHEETS FOR PROPOSED LOCATIONS)



- TRAFFIC SIGNAL NOTES**
1. ALL STATIONS AND OFFSETS ARE DIMENSIONED FROM THE CENTERLINE OF WASHINGTON STREET UNLESS OTHERWISE INDICATED.
 2. THE VIDEO VEHICLE DETECTION SYSTEM'S MANUFACTURER'S REPRESENTATIVE SHALL PROVIDE ASSISTANCE IN ALL CABLE TERMINATIONS.
 3. ALL DETECTION ZONES ARE APPROXIMATE. THE EXACT LOCATIONS SHALL BE DETERMINED AND LAID OUT BY LAKE COUNTY DIVISION OF TRANSPORTATION PERSONNEL.
 4. ALL SIGNAL HEADS SHALL BE L.E.D. (LIGHT-EMITTING DIODE).

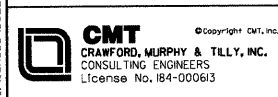


SCOPE OF WORK
TEMPORARY SIGNAL.
REMOVE EXISTING SIGNAL.
INSTALL NEW SIGNAL WITH AUTOSCOPE AND PTZ CAMERAS AND FIBER OPTIC INTERCONNECT.

SCHEDULE OF COMBINATION MAST ARM ASSEMBLY AND POLES

MA-1	36' MAST ARM, 20' LUMINAIRE ARM WITH IMAGE SENSOR, 45' MOUNTING HEIGHT
MA-2	34' MAST ARM, 20' LUMINAIRE ARM WITH IMAGE SENSOR, 45' MOUNTING HEIGHT
MA-3/ MA-4	MAST ARM ASSEMBLY AND POLE WITH DUAL MAST ARMS, 50 FT AND 24 FT (SPECIAL), 20' DUAL LUMINAIRE ARM WITH IMAGE SENSOR, 45' MOUNTING HEIGHT

FILE NAME: I:\Lakeco\0822481\Draw\Shenika.TS_04.dgn



USER NAME = Steve Prange	DESIGNED - CMC	REVISOR -
DESIGNED - CMC	DRAWN - CMC	REVISOR -
DESIGNED - CMC	CHECKED - KDN	REVISOR -
DESIGNED - CMC	DATE - 05/29/09	REVISOR -

DESIGNED - CMC	REVISOR -
DRAWN - CMC	REVISOR -
CHECKED - KDN	REVISOR -
DATE - 05/29/09	REVISOR -



WASHINGTON STREET - TRAFFIC SIGNAL PLAN
WASHINGTON STREET AT TRI-STATE PARKWAY

F.A. RTE.	SECTION	COUNTY	TOTAL SHEETS	SHEET NO.
1016	02-00110-12-WR	LAKE	206	96
CONTRACT NO. 63209				
FED. ROAD DIST. NO. 1 ILLINOIS FED. AID PROJECT				