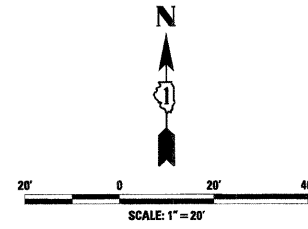
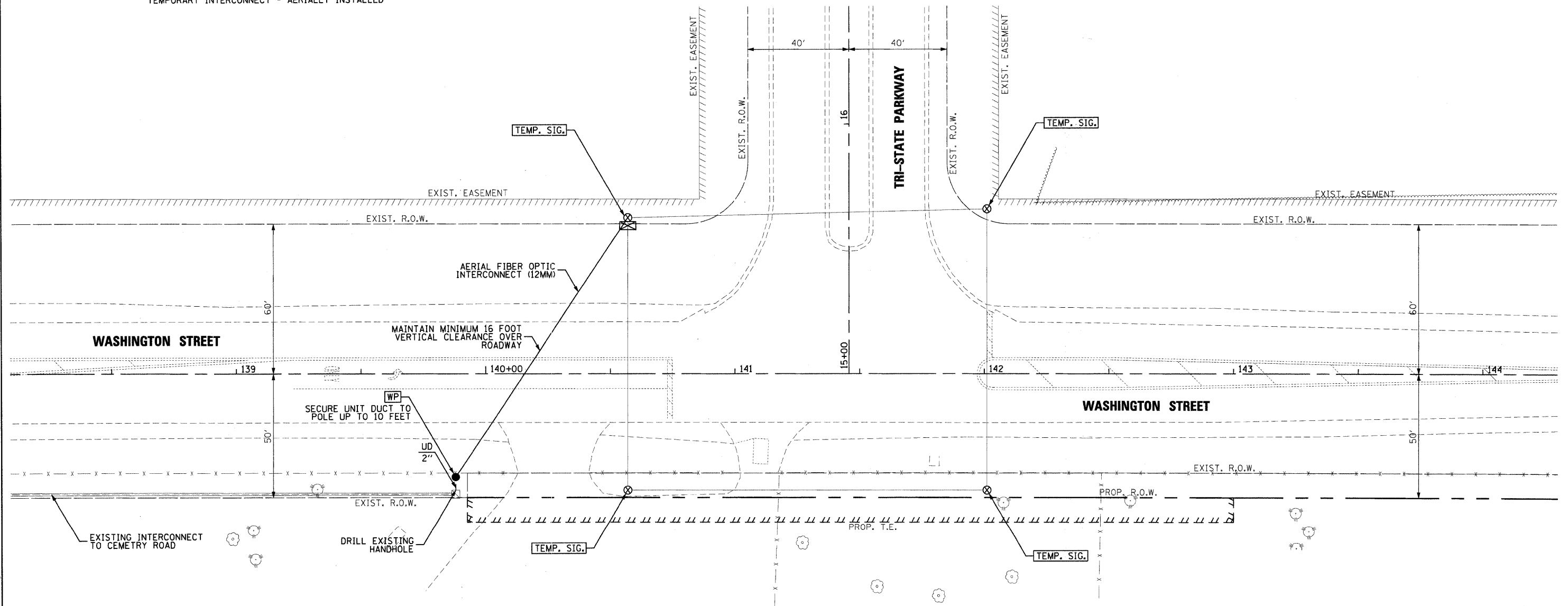


INTERCONNECT PLAN LEGEND

	PROPOSED	EXISTING
CONTROLLER		
UNIT DUCT		
HANDHOLE		
HEAVY DUTY HANDHOLE		
DOUBLE HANDHOLE		
G.S. CONDUIT		
HANDHOLE TO BE REMOVED		
WOOD POLE - SIGNAL		
WOOD POLE - INTERCONNECT		
TEMPORARY INTERCONNECT - AERIALLY INSTALLED		



STRUCTURE	STATION	OFFSET	POSSIBLE UTILITY CONFLICTS
WP	139+88	42' RT	NONE



FILE NAME = I:\Lakeco\082240\Draw\Sheet\TS-11.dgn



USER NAME = Steve Prange	DESIGNED - CMC	REVISED -
PLOT SCALE = 20.0000' / IN.	DRAWN - CMC	REVISED -
PLOT DATE = 05/29/09	CHECKED - KDN	REVISED -
	DATE - 05/29/09	REVISED -



WASHINGTON STREET - TEMPORARY INTERCONNECT PLAN
WASHINGTON STREET AT TRI-STATE PARKWAY

SCALE: SHEET NO. OF SHEETS STA. TO STA.

F.A. RTE.	SECTION	COUNTY	TOTAL SHEETS	SHEET NO.
1016	02-00110-12-WR	LAKE	206	103
CONTRACT NO. 63209				
FED. ROAD DIST. NO. 1 ILLINOIS FED. AID PROJECT				