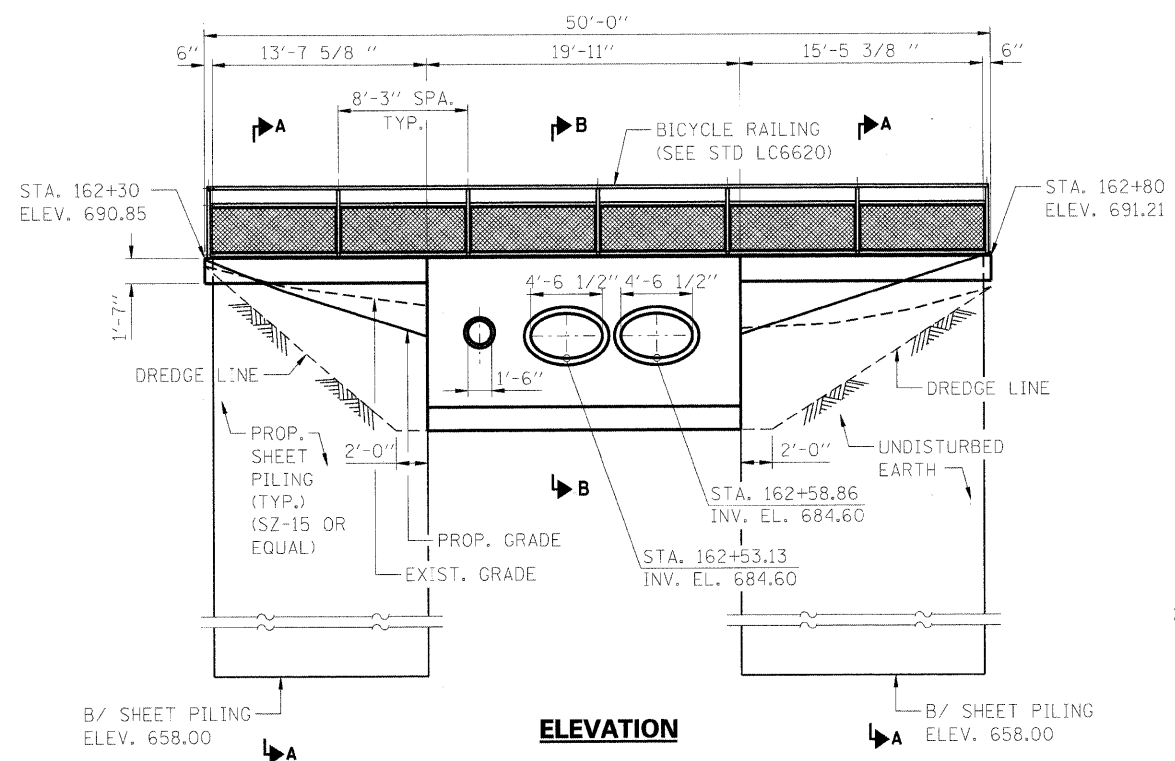
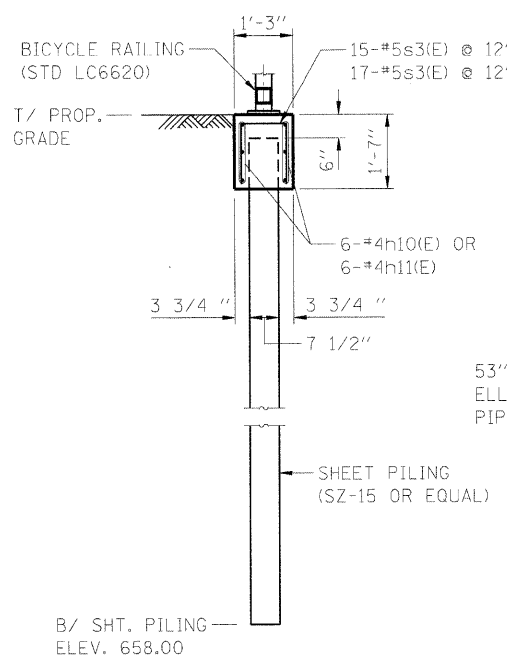


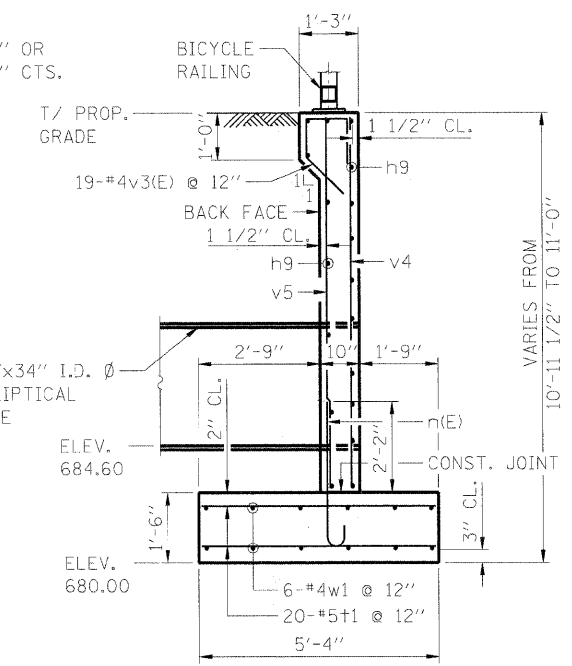
PLAN



ELEVATION



SECTION A-A



SECTION B-B

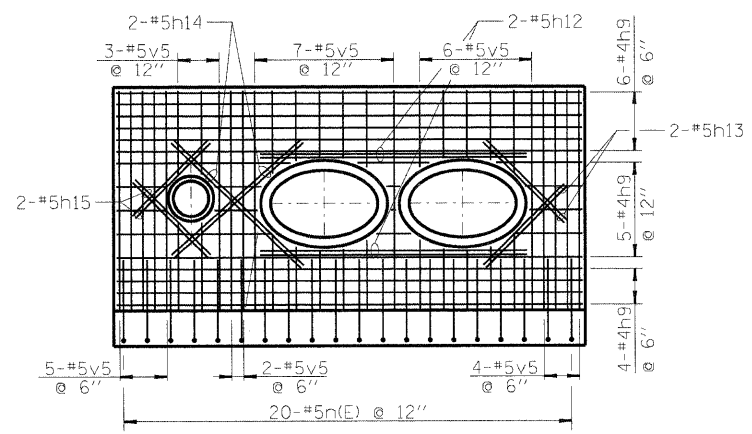
BILL OF MATERIAL

BAR	NO.	SIZE	LENGTH	SHAPE	
h9	25	#4	19'-7"	—	
h10(E)	6	#4	13'-10"	—	
h11(E)	6	#4	15'-7"	—	
h12	8	#5	11'-3"	—	
h13	8	#5	5'-0"	—	
h14	8	#5	7'-6"	—	
h15	8	#5	4'-6"	—	
n(E)	20	#5	4'-0"	U	
s3(E)	32	#5	3'-8"	┌	
t1	40	#5	5'-0"	—	
v3(E)	19	#4	3'-5"	D	
v4	19	#4	9'-4"	—	
v5	27	#5	9'-4"	—	
w1	12	#4	19'-7"	—	
CONCRETE STRUCTURES				CU. YD.	13.3
PROTECTIVE COAT				SQ. YD.	6.9
REINFORCEMENT BARS				POUND	1,310
REINFORCEMENT BARS, EPOXY COATED				POUND	370
BICYCLE RAILING				FOOT	49.50
PERMANENT STEEL SHEET PILING				SQ. FT.	945

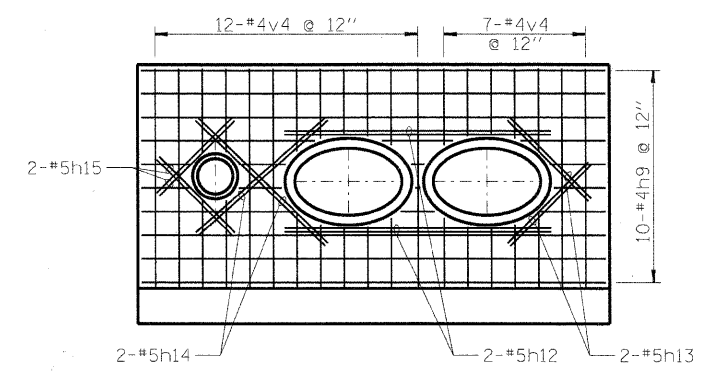
* CUT BARS TO FIT.

NOTES:

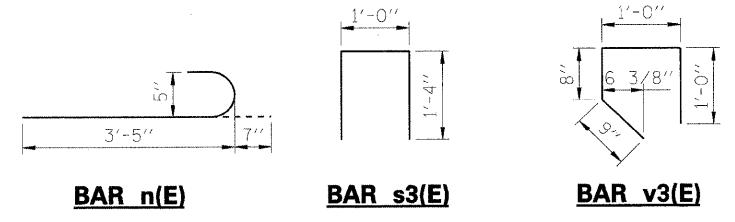
1. REINFORCEMENT BARS DESIGNATED (E) SHALL BE EPOXY COATED.



BACK FACE REINFORCEMENT DETAIL



FRONT FACE REINFORCEMENT DETAIL



BAR n(E)

BAR s3(E)

BAR v3(E)

SHEET PILE SPECIFICATIONS:

f_y = 50,000 psi (AASHTO M202 GRADE 50)
S_{EFFECTIVE} = 6.6 IN³/FT. (SEE SPECIAL PROVISIONS)

NOTE:

NO EXCAVATION ALLOWED BELOW THE DREDGE LINE WITHOUT THE ENGINEER'S PERMISSION.

FILE NAME: I:\Lakeco\BR22481\Draw\Sheet\ST_4.dgn

<p>CMT CRAWFORD, MURPHY & TELLY, INC. CONSULTING ENGINEERS License No. 184-000613</p>	USER NAME = Steve Prange PLOT SCALE = 6.0000 "/> IN. PLOT DATE = 05/29/09	DESIGNED - ATI DRAWN - PA CHECKED - KDN DATE - 05/29/09	REVISED - REVISED - REVISED - REVISED -	<p>LakeCounty Division of Transportation</p>	PROPOSED RETAINING WALL NO. 2 DETAILS STATION 162+30 TO 162+80			F.A. RTE. 1016 SECTION 02-00110-12-WR COUNTY LAKE TOTAL SHEETS 206 SHEET NO. 118
	SCALE: SHEET NO. OF SHEETS STA. TO STA.				FED. ROAD DIST. NO. 1 ILLINOIS FED. AID PROJECT CONTRACT NO. 63209			