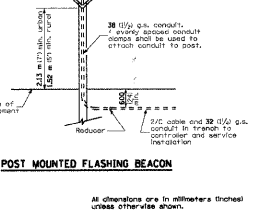
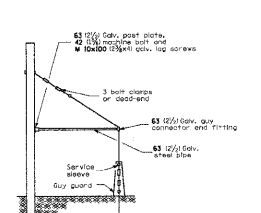
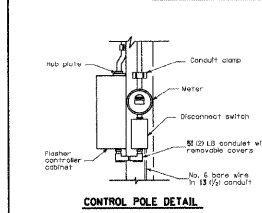
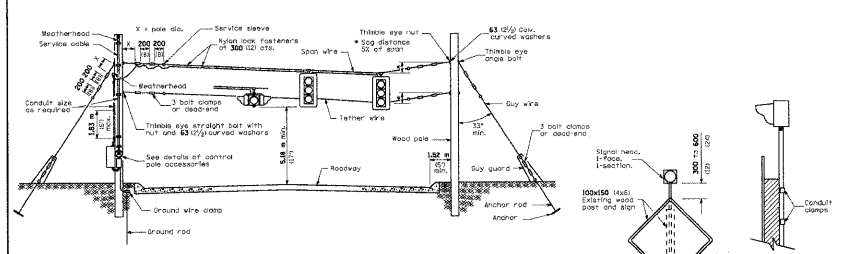


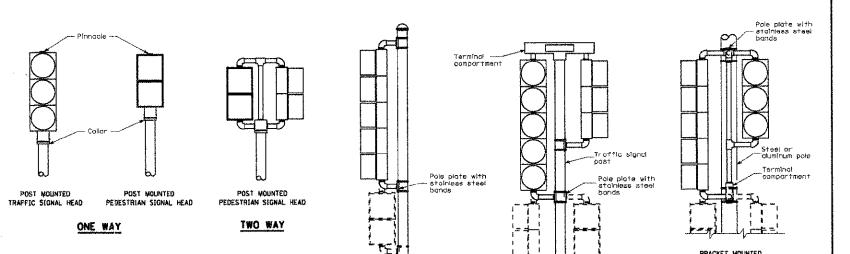
Max Arm Length	Foundation Depth*	Foundation Diameter	Splice Diameter	Quantity of No. 15
Less than 8.1 m (26'7")	3.0 m (10'0")	750 (30)	600 (24)	8
8.1 m (26'7") to 10.1 m (33'2")	4.5 m (14'9")	750 (30)	600 (24)	8
10.1 m (33'2") to 12.2 m (39'9")	5.4 m (17'9")	900 (36)	750 (30)	12
12.2 m (39'9") to 15.2 m (49'9")	6.0 m (19'8")	900 (36)	750 (30)	12
15.2 m (49'9") to 18.3 m (60'1")	6.6 m (21'7")	900 (36)	750 (30)	12

* These foundation depths are for sites which have cohesive soils (clayey silt, clayey silty sand) along the length of the shaft, with an average unconfined compressive strength (su) of 100 kPa (1.5 tsf). This strength shall be verified by boring logs prior to construction or with testing by the engineer during foundation design. The Bureau of Bridges & Structures should be contacted for a revised design if other conditions are encountered.

CONCRETE FOUNDATION DETAILS
STANDARD 878001-05



SPAN WIRE MOUNTED SIGNALS AND FLASHING BEACON
CONTROL POLE DETAIL
SIDEWALK GUY DETAIL
POST MOUNTED FLASHING BEACON
STANDARD 880001



TRAFFIC SIGNAL MOUNTING DETAILS
STANDARD 880006

FILE NAME = I:\lakeco\8822401\draw\sheet\STD_19.dgn

CMT
CRAWFORD, MURPHY & TILLY, INC.
CONSULTING ENGINEERS
License No. 184-00063

USER NAME = Steve Prange
PLOT SCALE = 20.0000' / IN.
PLOT DATE = 05/29/09

DESIGNED - SJP
DRAWN - SJP
CHECKED - KDN
DATE - 05/29/09

LakeCounty
Division of Transportation

I.D.O.T. STANDARD DRAWINGS
SCALE: N.T.S. SHEET NO. 14 OF 14 SHEETS STA. N/A TO STA. N/A

F.A. RTE.	SECTION	COUNTY	TOTAL SHEETS	SHEET NO.
1016	02-00110-12-WR	LAKE	206	198
CONTRACT NO. 63209				
FED. ROAD DIST. NO. 1 ILLINOIS FED. AID PROJECT				