

F.A.U. RTE.	SECTION	COUNTY	TOTAL SHEETS	SHEET NO.
0087	09-00008-00-RS	MC HENRY	5	1
FED. ROAD DIST. NO.	ILLINOIS	CONTRACT NO. 63239		

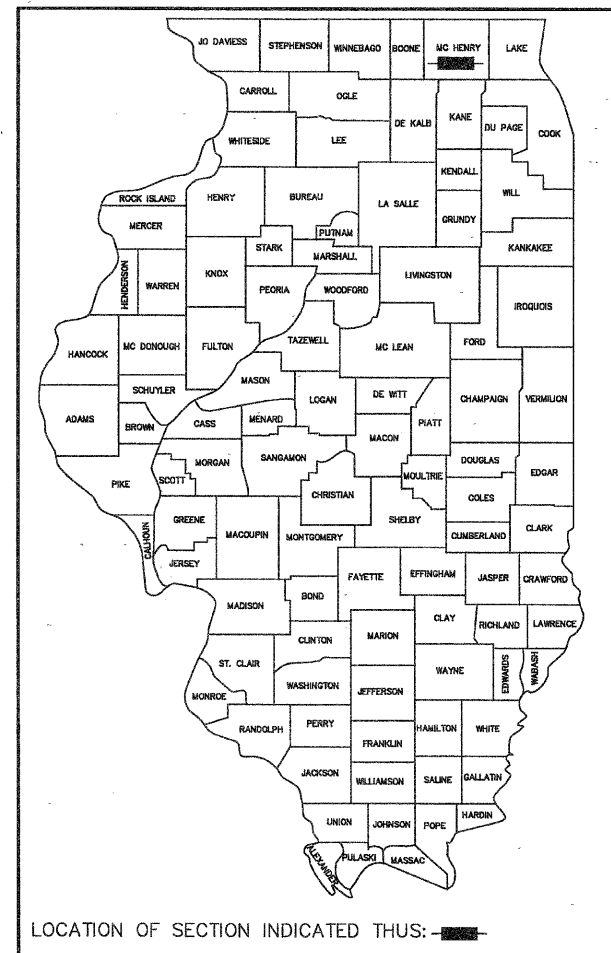
INDEX OF SHEETS

- COVER SHEET
- GENERAL NOTES, HIGHWAY STANDARDS, SUMMARY OF QUANTITIES, AND TYPICAL SECTIONS
- PLAN OF IMPROVEMENTS
- 4-5. DISTRICT ONE DETAILS

STATE OF ILLINOIS
DEPARTMENT OF TRANSPORTATION
DIVISION OF HIGHWAYS

PLANS FOR PROPOSED
FEDERAL AID HIGHWAY

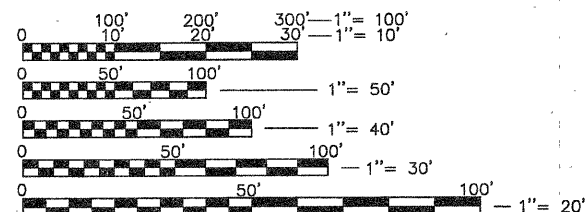
ROUTE: FAU ROUTE 0087 (BARREVILLE ROAD)
SECTION: 09-00008-00-RS
BARREVILLE ROAD, RESURFACING
COUNTY: MCHENRY
JOB NO: C-91-679-09
PROJECT NO: ARA-9003(369)



TRAFFIC DATA

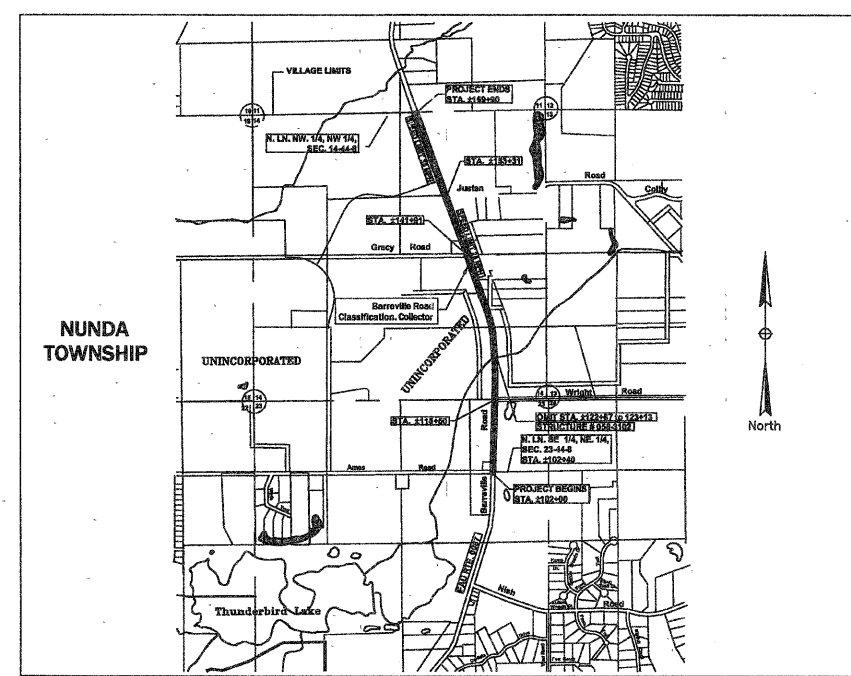
ADT:
BARREVILLE RD. 3950 ATD (2007)

POSTED SPEED	DESIGN SPEED
25 MPH (EXISTING)	30 MPH (EXISTING)
25 MPH (PROPOSED)	30 MPH (PROPOSED)



FULL SIZE PLANS HAVE BEEN PREPARED USING STANDARD ENGINEERING SCALES. REDUCED SIZED PLANS WILL NOT CONFORM TO STANDARD SCALES. IN MAKING MEASUREMENTS ON REDUCED PLANS, THE ABOVE SCALES MAY BE USED.

PROJECT LOCATION MAP
N.T.S.
RANGE 8 EAST



PROJECT LENGTH

GROSS LENGTH OF PROJECT = 6,750 FT (1.28 MILES)
OMISSION (BRIDGE) = 26 FT
NET LENGTH OF IMPROVEMENT (BARREVILLE RD.) = 6,724 FT (1.28 MILES)

J.U.L.I.E.
JOINT UTILITY LOCATION INFORMATION FOR EXCAVATION CALL 811

Civil Engineers - Land Surveyors
Bleck Engineering Company, Inc.
1375 North Western Avenue - Lake Forest, Illinois 60045
Phone 847-295-5200 Fax 847-295-7061

CONTRACT NO. 63239

STATE OF ILLINOIS
DEPARTMENT OF TRANSPORTATION
DIVISION OF HIGHWAYS

APPROVED July 14 2009
[Signature]
VILLAGE OF PRAIRIE GROVE

PASSED July 16 2009
[Signature]
DISTRICT ONE ENGINEER OF LOCAL ROADS & STREETS

RELEASING FOR BID
BASED ON LIMITED REVIEW JULY 16 2009
[Signature]
DEPUTY DIRECTOR OF HIGHWAYS, REGION ENGINEER

PROFESSIONAL ENGINEER'S SIGN & SEAL

[Signature] July 13, 2009

Patrick J. Bleck, P.E.
Bleck Engineering Company, Inc.
EXPIRES: 11-30-09

PRINTED BY THE AUTHORITY
OF THE STATE OF ILLINOIS

ASSOCIATE FIELD ENGINEER: KEVIN STALLWORTH (847) 705-4169

GENERAL NOTES

- ALL REFERENCES TO "STANDARD SPECIFICATIONS" IN THESE GENERAL NOTES SHALL BE INTERPRETED TO MEAN "STANDARD SPECIFICATIONS FOR ROAD AND BRIDGE CONSTRUCTION" ADOPTED BY THE ILLINOIS DEPARTMENT OF TRANSPORTATION, JANUARY 1, 2007.
- ALL REFERENCES TO "ENGINEER" SHALL BE INTERPRETED TO MEAN THE RESIDENT ENGINEER.
- PRIOR TO COMMENCEMENT OF CONSTRUCTION, THE CONTRACTOR SHALL VERIFY ALL DIMENSIONS AND CONDITIONS AFFECTING THEIR WORK WITH THE ACTUAL CONDITIONS AT THE JOB SITE. IN ADDITION, THE CONTRACTOR MUST VERIFY THE ENGINEER'S LINE AND GRADE STAKES. IF THERE ARE ANY DISCREPANCIES FROM WHAT IS SHOWN ON THE CONSTRUCTION PLANS, HE MUST IMMEDIATELY REPORT SAME TO THE ENGINEER BEFORE DOING ANY WORK. OTHERWISE THE CONTRACTOR ASSUMES FULL RESPONSIBILITY. IN THE EVENT OF DISAGREEMENT BETWEEN THE CONSTRUCTION PLANS, STANDARD SPECIFICATIONS AND/OR SPECIAL DETAILS, THE CONTRACTOR SHALL SECURE WRITTEN INSTRUCTIONS FROM THE ENGINEER PRIOR TO PROCEEDING WITH ANY PART OF THE WORK AFFECTED BY OMISSIONS OR DISCREPANCIES. FAILING TO SECURE SUCH INSTRUCTIONS, THE CONTRACTOR WILL BE CONSIDERED TO HAVE PROCEEDED AT HIS OWN RISK AND EXPENSE. IN THE EVENT OF ANY DOUBT OR QUESTION ARISING WITH RESPECT TO THE TRUE MEANING OF THE CONSTRUCTION PLANS OR SPECIFICATIONS, THE DECISION OF THE ENGINEER SHALL BE FINAL AND CONCLUSIVE.
- IT IS THE CONTRACTOR'S RESPONSIBILITY TO ASCERTAIN EXISTING FIELD CONDITIONS PRIOR TO BIDDING ON THE PROJECT.
- BEFORE STARTING ANY EXCAVATION, THE CONTRACTOR SHALL CALL "JULIE" (JOINT UTILITY LOCATION INFORMATION FOR EXCAVATION) AT 8-1-1 AND THE VILLAGE OF PRAIRIE GROVE AT (815) 455-1411 FOR FIELD LOCATIONS OF BURIED UTILITIES (48 HOURS NOTIFICATION IS REQUIRED).
- THE CONTRACTOR WILL NOT BE ALLOWED TO SET UP A YARD OR FIELD OFFICE ON STATE OR CITY PROPERTY WITHOUT WRITTEN PERMISSION FROM THE DEPARTMENT OR CITY.
- SAW CUTTING OF PAVEMENTS, SIDEWALK, ETC. SHALL BE TO FULL DEPTH AND SHALL RESULT IN A CLEAN STRAIGHT EDGE ON THE PORTION REMAINING. ALL SAW CUTTING SHALL BE CONSIDERED INCLUDED IN THE COST OF THE ITEM REMOVED.
- THE CONTRACTOR SHALL PROTECT AND CAREFULLY PRESERVE ALL SECTION OR SUBSECTION MONUMENTS, PROPERTY CORNERS, AND REFERENCE MARKERS UNTIL THE OWNER, HIS AGENT, OR AN AUTHORIZED SURVEYOR HAS WITNESSED OR OTHERWISE REFERENCED THEIR LOCATIONS.
- OFFSET LOCATIONS GIVEN IN THE PLANS FOR STRUCTURES, EDGE OF PAVEMENT, ETC. ARE FROM THE ROADWAY CENTERLINE.
- HOT-MIX ASPHALT SURFACE REMOVAL BUTT JOINTS WILL BE INSTALLED AT THE ENDS OF ALL RESURFACING (WHERE RESURFACING MEETS EXISTING PAVEMENT), IN ACCORDANCE WITH THE BUTT JOINT AND HOT-MIX ASPHALT TAPER DETAILS SHEET INCLUDED IN THE PLANS, UNLESS OTHERWISE SPECIFIED.
- QUANTITIES FOR PATCHING SHALL NOT EXCEED THOSE PROVIDED IN THE SUMMARY OF QUANTITIES UNLESS APPROVED BY THE ENGINEER. THE ENGINEER WILL IDENTIFY FINAL PATCH LOCATIONS IN THE FIELD.

STORM SEWERS, WATER MAINS, AND UTILITIES

- THE CONTRACTOR SHALL BE RESPONSIBLE FOR CONTACTING THE OWNERS OF ALL UTILITIES PRIOR TO CONSTRUCTION TO DETERMINE THE LOCATION OF ALL UTILITY EQUIPMENT. THE CONTRACTOR SHALL COOPERATE WITH ALL UTILITY OWNERS IN ACCORDANCE WITH THE STANDARD SPECIFICATIONS IF UTILITY RELOCATION, ADJUSTMENT, OR PROTECTION IS NECESSARY.
- THE LOCATION OF EXISTING DRAINAGE STRUCTURES, STORM SEWERS, WATER MAINS, SANITARY SEWERS, AND ANY OTHER PUBLIC UTILITIES AS SHOWN ON THE PLANS IS APPROXIMATE AND THEIR EXACT LOCATION IS TO BE DETERMINED IN THE FIELD BY THE CONTRACTOR. THIS WORK SHALL BE CONSIDERED AS INCLUDED IN THE UNIT BID PRICES OF THE CONTRACT, AND NO ADDITIONAL COMPENSATION WILL BE ALLOWED.
- THE CONTRACTOR SHALL BE RESPONSIBLE FOR THE PROTECTION OF ALL UNDERGROUND AND SURFACE UTILITIES EVEN THOUGH THEY MIGHT NOT BE SHOWN ON THE PLANS. ANY UTILITY PROPERTY DAMAGED DURING CONSTRUCTION SHALL BE REPAIRED OR REPLACED TO THE SATISFACTION OF THE OWNER AT THE CONTRACTOR'S EXPENSE.
- ALL UTILITY COMPANIES SHALL BE NOTIFIED AT LEAST 3 DAYS PRIOR TO THE START OF CONSTRUCTION.
- THE CONTRACTOR SHALL USE ALL NECESSARY PRECAUTIONS AND PROTECTION MEASURES REQUIRED TO MAINTAIN UTILITIES, SEWERS, AND APPURTENANCES THAT MUST BE KEPT IN OPERATION.
- THE CONTRACTOR SHALL ENSURE THAT ALL WATER SYSTEM VALVES, VALVE VAULTS, AND SANITARY SEWER MANHOLES REMAIN READILY ACCESSIBLE TO THE CITY FOR EMERGENCY OPERATIONS. THE LOCATIONS OF ALL WATER AND SANITARY FACILITIES SHALL BE MARKED AND READILY VISIBLE AT ALL TIMES.
- ANY LOOSE MATERIAL DEPOSITED IN THE FLOWLINE OF DRAINAGE STRUCTURES, WHICH OBSTRUCTS THE NATURAL FLOW OF WATER SHALL BE REMOVED AT THE CLOSE OF EACH WORKING DAY. PRIOR TO ACCEPTANCE OF THE IMPROVEMENT, ALL DRAINAGE STRUCTURES SHALL BE FREE OF DIRT AND DEBRIS. THIS WORK WILL NOT BE PAID FOR SEPARATELY, BUT SHALL BE CONSIDERED AS INCLUDED IN THE UNIT BID PRICES OF THE CONTRACT.

SIGNING AND STRIPING

- THE CONTRACTOR WILL BE REQUIRED TO TEMPORARILY RESET ALL SUCH SIGNS THAT INTERFERE WITH CONSTRUCTION OPERATIONS. ALL SUCH SIGNS MUST BE MAINTAINED STRAIGHT AND CLEAN FOR THE DURATION OF THE TEMPORARY SETTING AND MUST BE RE-ERECTED AT A TEMPORARY LOCATION IN A WORKMANLIKE MANNER AND BE VISIBLE TO THE TRAFFIC FOR WHICH IT IS INTENDED. THIS WORK WILL NOT BE PAID FOR SEPARATELY, BUT SHALL BE INCLUDED IN THE UNIT BID PRICES OF THE CONTRACT.

TRAFFIC CONTROL

- SEE TRAFFIC CONTROL HIGHWAY STANDARDS CONCERNING TRAFFIC CONTROL AND PROTECTION.

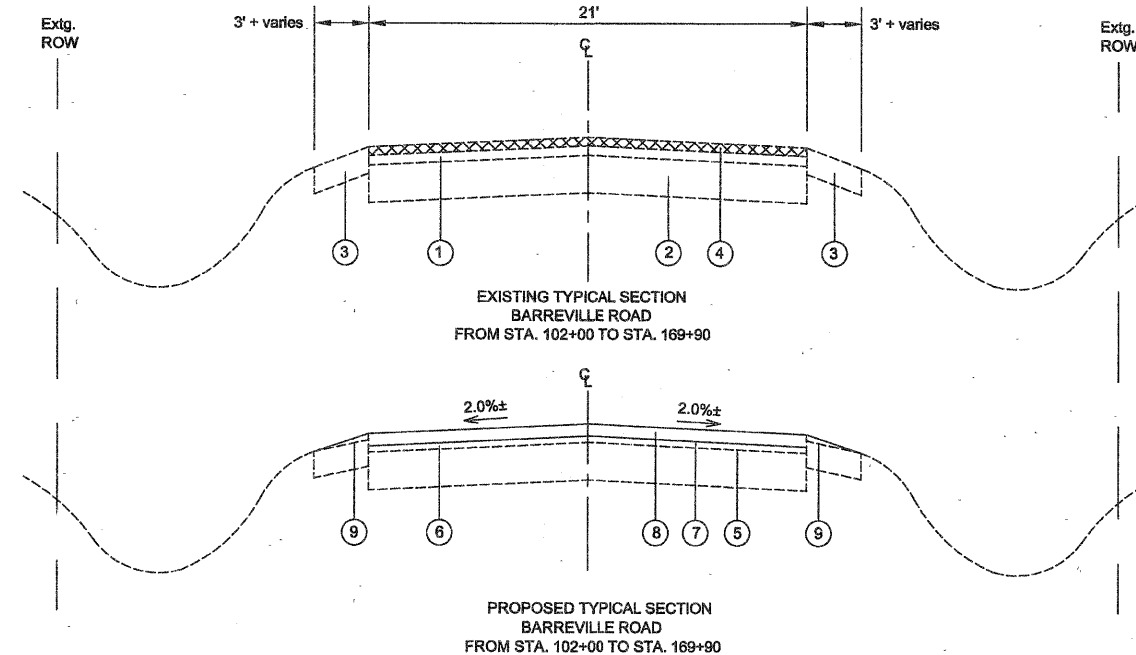
HIGHWAY STANDARDS

000001-05	STANDARD SYMBOLS, ABBREVIATIONS, AND PATTERNS
442201-03	CLASS C AND D PATCHES
701301-03	LANE CLOSURE, 2L 2W, SHORT TIME OPERATIONS
701311-03	LANE CLOSURE, 2L 2W, MOVING OPERATIONS - DAY ONLY
701501-05	URBAN LANE CLOSURE, 2L 2W, UNDIVIDED
701901-01	TRAFFIC CONTROL DEVICES

SUMMARY OF QUANTITIES

Item	Paycode	Description	Unit	Quantities
1	40600100	BITUMINOUS MATERIALS (PRIME COAT)	GAL	1575
2	40600300	AGGREGATE (PRIME COAT)	TON	40
3	40600625	LEVELING BINDER (MACHINE METHOD) N50	TON	914
4	40603310	HOT MIX ASPHALT SURFACE COURSE, MIX C, N50	TON	1827
5	44000157	HOT-MIX ASPHALT SURFACE REMOVAL, 2"	SQ YD	15750
6	44201713	CLASS D PATCHES TYPE I, 6"	SQ YD	79
7	44201717	CLASS D PATCHES TYPE II, 6"	SQ YD	118
8	44201721	CLASS D PATCHES TYPE III, 6"	SQ YD	354
9	44201723	CLASS D PATCHES TYPE IV, 6"	SQ YD	236
10	44300300	AREA REFLECTIVE CRACK CONTROL, SYSTEM A	SY	15750
11	48101200	AGGREGATE SHOULDER, TYPE B	TON	405
12	67100100	MOBILIZATION	L SUM	1
13	X0322256	TEMPORARY INFORMATION SIGNING	SQ FT	130
14	70101800	TRAFFIC CONTROL AND PROTECTION (SPECIAL)	L SUM	1

TYPICAL SECTIONS



EXISTING LEGEND

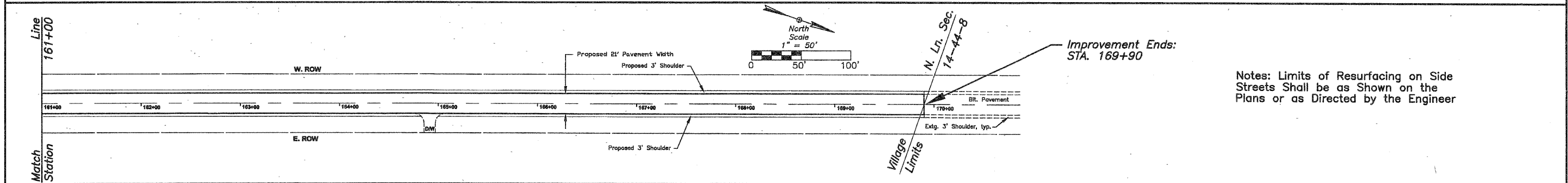
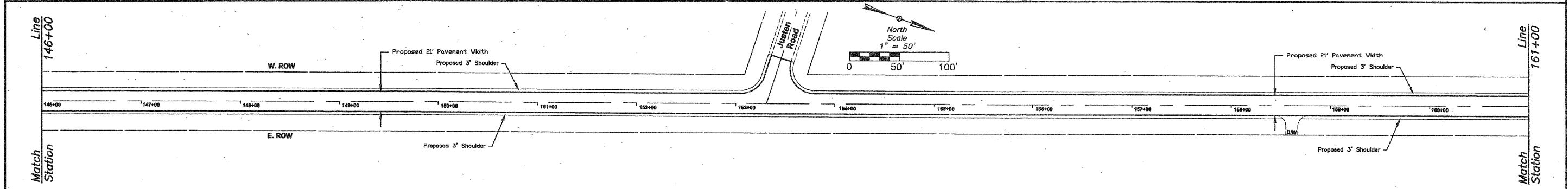
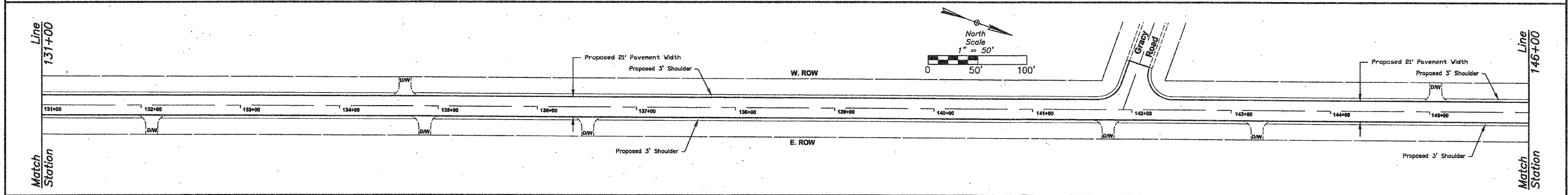
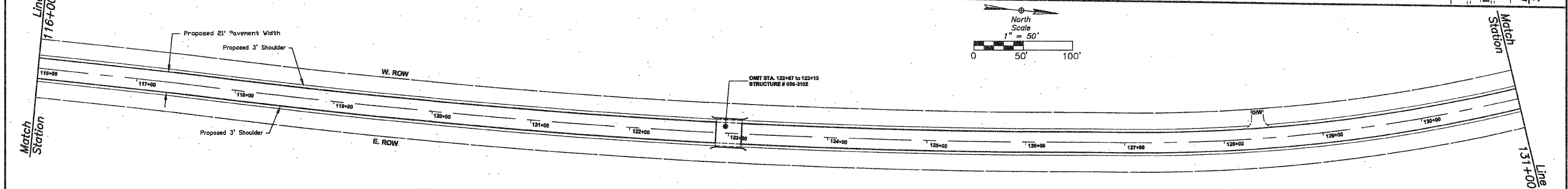
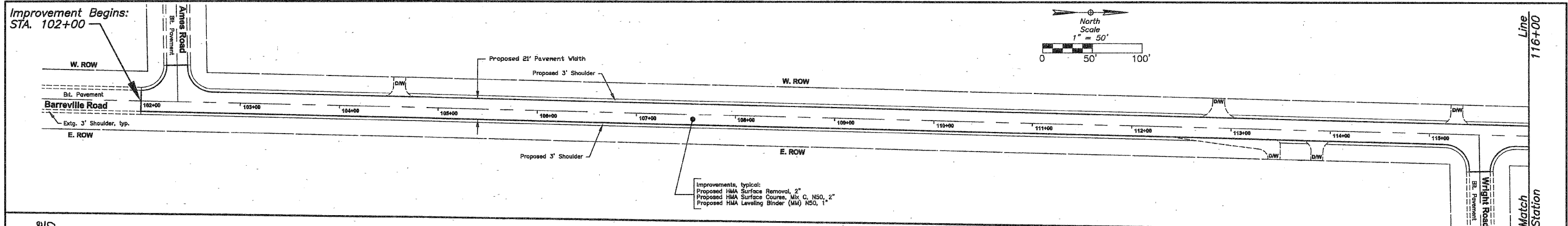
- ① ASPHALT PAVEMENT, 5'-6"
- ② AGGREGATE BASE
- ③ AGGREGATE SHOULDER
- ④ PROPOSED HOT-MIX ASPHALT SURFACE REMOVAL, 2"

PROPOSED LEGEND

- ⑤ BITUMINOUS MATERIALS (PRIME COAT) AND AGGREGATE (PRIME COAT)
- ⑥ LEVELING BINDER (MACHINE METHOD), N50, 1"
- ⑦ AREA REFLECTIVE CRACK CONTROL
- ⑧ HOT-MIX ASPHALT SURFACE COURSE, MIX "C", N50, 2"
- ⑨ AGGREGATE SHOULDER, TYPE B

HOT-MIX ASPHALT MIXTURE REQUIREMENTS			
MIXTURE TYPE	AC	AIR VOID	MAX RAP%
PAVEMENT RESURFACING			
HMA SURFACE COURSE, MIX "C" (IL 9.5mm)	PG 64-22	4% @ 50 GYR.	15
LEVELING BINDER (MACHINE METHOD), N50	PG 64-22 *	4% @ 50 GYR.	25
PATCHING			
CLASS D PATCHES, 6" (BINDER IL-19mm)	PG 64-22 *	4% @ 70 GYR.	25

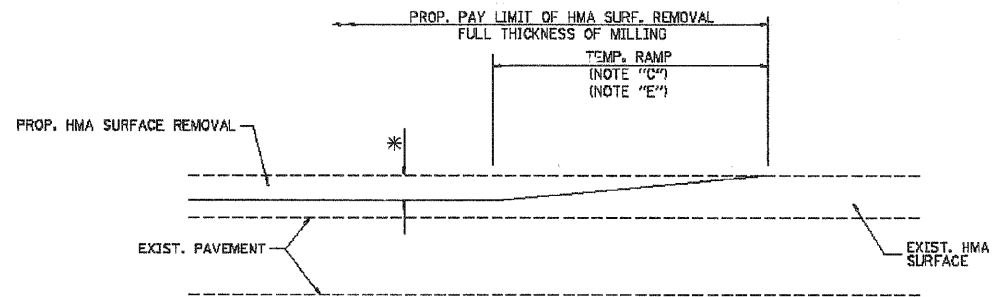
THE UNIT WEIGHT TO CALCULATE ALL HMA SURFACE MIXTURE QUANTITIES IS 112 LBS / SQ YD / IN
* WHEN RAP EXCEEDS 20%, THE NEW ASPHALT BINDER IN THE MIX SHALL BE PG 58-22



Notes: Limits of Resurfacing on Side Streets Shall be as Shown on the Plans or as Directed by the Engineer

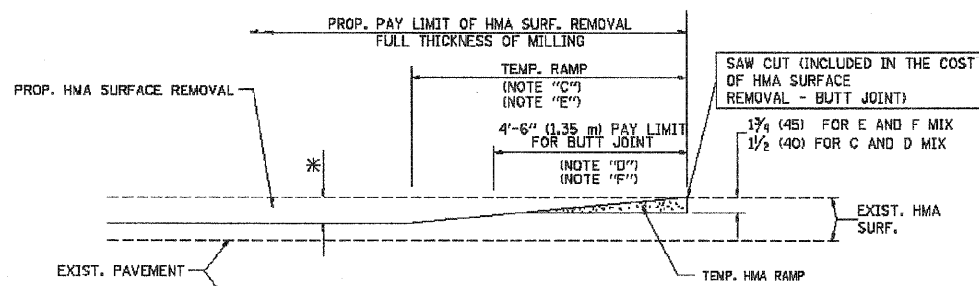
FILE NAME = \$FILEL\$	USER NAME = \$USER\$	DESIGNED --	REVISED --	STATE OF ILLINOIS DEPARTMENT OF TRANSPORTATION	PLAN OF IMPROVEMENTS	F.A.U. RTE. 0087	SECTION 09-00008-00-RS	COUNTY MC HENRY	TOTAL SHEETS 3	SHEET NO. 3	
	PLOT SCALE = \$SCALE\$	DRAWN --	REVISED --			SCALE: _____	SHEET NO. _____ OF _____ SHEETS	CONTRACT NO. 63239		ILLINOIS FED. AID PROJECT	
	PLOT DATE = \$DATE\$	CHECKED --	REVISED --			STA. _____	TO STA. _____				

CONTRACT NO. 63239				
F.A.U. RTE.	SECTION	COUNTY	TOTAL SHEETS	SHEET NO.
008709-00008-00-RS	MC HENRY		4	4
STA. TO STA.		FED. ROAD DIST. NO. 1 ILLINOIS FED. AID PROJECT		



MILLED TEMPORARY RAMP
(FOR BUTT JOINT AND HMA TAPER SEE DETAIL BELOW)

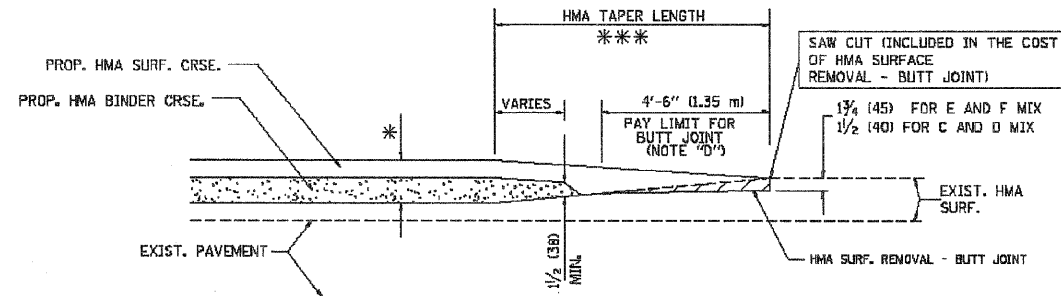
OPTION 1



HMA CONSTRUCTED TEMPORARY RAMP
(FOR BUTT JOINT AND HMA TAPER SEE DETAIL BELOW)

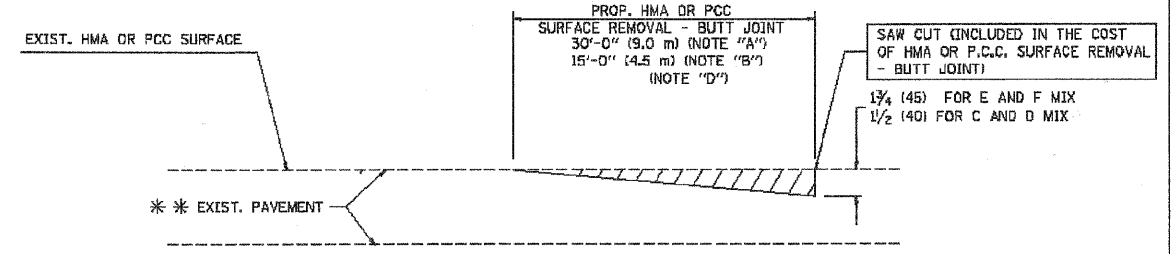
OPTION 2

TYPICAL TEMPORARY RAMP

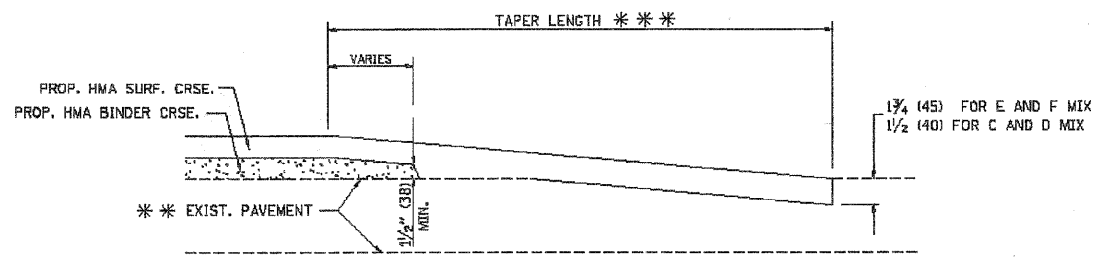


BUTT JOINT AND HMA TAPER

TYPICAL BUTT JOINT AND HMA TAPER FOR MILLING AND RESURFACING



BUTT JOINT DETAIL



HMA TAPER DETAIL

TYPICAL BUTT JOINT AND HMA TAPER FOR RESURFACING ONLY

** PC CONCRETE, HMA OR HMA RESURFACED PAVEMENT.

NOTES

- A: MAINLINE ROADWAYS AND MAJOR SIDE ROADS.
 - B: MINOR SIDE ROADS.
 - C: THE TEMP. RAMP SHALL BE CONSTRUCTED IMMEDIATELY UPON REMOVAL OF THE EXISTING HMA SURFACE.
 - D: THE BUTT JOINT SHALL BE CONSTRUCTED IMMEDIATELY PRIOR TO PLACING THE PROPOSED HMA COURSES.
 - E: TAPER THE TEMP. RAMP AT A RATE OF 3'-0" (900 mm) PER 1 INCH (25 mm) OF MILLING THICKNESS.
 - F: INSTALLATION AND REMOVAL OF THE 4'-6" (1.35 m) TEMP. RAMP IS INCLUDED IN COST OF HMA SURFACE REMOVAL - BUTT JOINT
 - G: SEE ARTICLE 406.08 AND 406.14 OF THE STANDARD SPECIFICATIONS FOR "HMA AND/OR PCC SURFACE REMOVAL, BUTT JOINT".
- * SEE TYPICAL SECTIONS FOR MILLING THICKNESS.
- ** 20'-0" (6.1 m) PER 1 (25) RESURFACING (NOTE "A")
10'-0" (3.0 m) PER 1 (25) RESURFACING (NOTE "B")

ALL DIMENSIONS ARE IN INCHES (MILLIMETERS) UNLESS OTHERWISE SHOWN.

BASIS OF PAYMENT

THE BUTT JOINT WILL BE PAID FOR AT THE CONTRACT UNIT PRICE PER SQUARE YARD (SQUARE METER) FOR "HOT-MIX ASPHALT SURFACE REMOVAL - BUTT JOINT" OR FOR "PORTLAND CEMENT CONCRETE SURFACE REMOVAL - BUTT JOINT".

REVISIONS	
NAME	DATE
M. DE YONG	6-13-90
M. DE YONG	7-3-90
M. DE YONG	3-27-92
R. SHAH	09/09/94
R. SHAH	10/25/94
A. ABBAS	03/21/97
M. GOMEZ	04/06/01
R. BURD	01/03/07

ILLINOIS DEPARTMENT OF TRANSPORTATION

BUTT JOINT AND HMA TAPER DETAILS

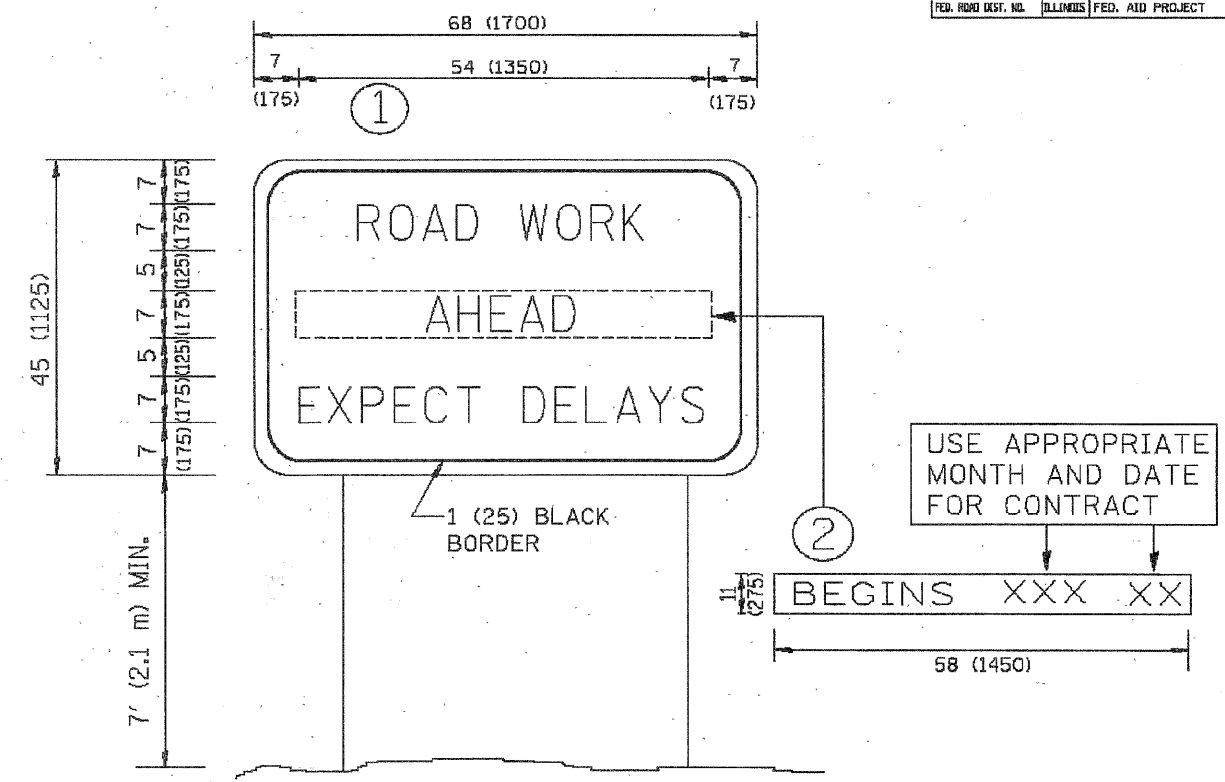
SCALE: VERT. NONE
HORIZ.

DRAWN BY
CHECKED BY
BD400-05 (VI-BD32)

PLOT DATE = \$DATE\$
 FILE NAME = \$FILEL\$
 PLOT SCALE = \$SCALE\$
 USER NAME = \$USER\$

FILE NAME = \$FILEL\$	USER NAME = \$USER\$	DESIGNED --	REVISED --	STATE OF ILLINOIS DEPARTMENT OF TRANSPORTATION	DISTRICT ONE DETAIL BD32	F.A.U. RTE.	SECTION	COUNTY	TOTAL SHEETS	SHEET NO.	
		DRAWN --	REVISED --			0087	09-00008-00-RS	MC HENRY	4	4	
		CHECKED --	REVISED --			CONTRACT NO. 63239					
		DATE --	REVISED --			FED. ROAD DIST. NO. 1 ILLINOIS FED. AID PROJECT					

CONTRACT NO. 63239				
F.A.U. RTE.	SECTION	COUNTY	TOTAL SHEETS	SHEET NO.
0087	09-00008-00-RS	MC HENRY	5	5
STA.		TO STA.		
FED. ROAD DIST. NO.		ILLINOIS FED. AID PROJECT		



NOTES:

1. USE BLACK LETTERING ON ORANGE BACKGROUND.
2. ERECT SIGNS IN ADVANCE OF THE LOCATION FOR THE "ROAD CONSTRUCTION AHEAD" SIGN AT LOCATIONS AS DIRECTED BY THE ENGINEER.
3. ERECT SIGN ① WITH INSTALLED PANEL ② ONE WEEK PRIOR TO THE START OF CONSTRUCTION.
4. REMOVE PANEL ② SOON AFTER THE START OF CONSTRUCTION.
5. SEE SPECIAL PROVISION FOR "TEMPORARY INFORMATION SIGNING" FOR ADDITIONAL INFORMATION.
6. ONE SIGN ASSEMBLY EQUALS 25.70 SQ. FT. (2.3 SQ. M.)
7. SHALL BE PAID FOR AS TEMPORARY INFORMATION SIGNING.

ALL DIMENSIONS ARE IN INCHES (MILLIMETERS) UNLESS OTHERWISE SHOWN.

REVISIONS	
NAME	DATE
R. MIRS	9-15-97
R. MIRS	12-11-97
T. RAMMACHER	2-2-99
C. JUCIUS	1-31-07

ILLINOIS DEPARTMENT OF TRANSPORTATION
ARTERIAL ROAD
INFORMATION SIGN

SCALE: NONE

DRAWN BY DESIGN
CHECKED BY
TC22

PLOT DATE = 3/2/2007
FILE NAME = N:\dms\m\63239.dgn
PLOT SCALE = 0.8000 / 1" = 1'
DESIGN NAME = TC22

FILE NAME = \$FILEL\$	USER NAME = \$USER\$	DESIGNED --	REVISED --	STATE OF ILLINOIS DEPARTMENT OF TRANSPORTATION	DISTRICT ONE DETAIL TC22	F.A.U. RTE.	SECTION	COUNTY	TOTAL SHEETS	SHEET NO.	
	PLOT SCALE = \$SCALE\$	DRAWN --	REVISED --			0087	09-00008-00-RS	MC HENRY	5	5	
	PLOT DATE = \$DATE\$	CHECKED --	REVISED --			CONTRACT NO. 63239					
		DATE --	REVISED --			FED. ROAD DIST. NO. ILLINOIS FED. AID PROJECT					