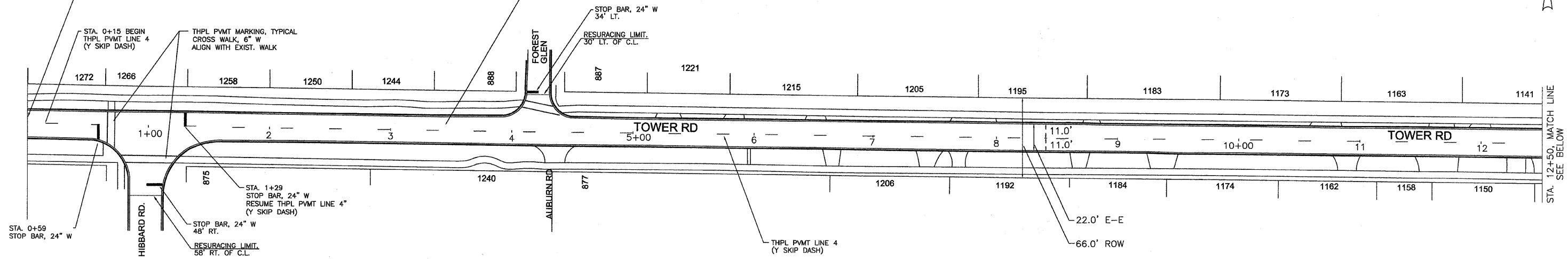
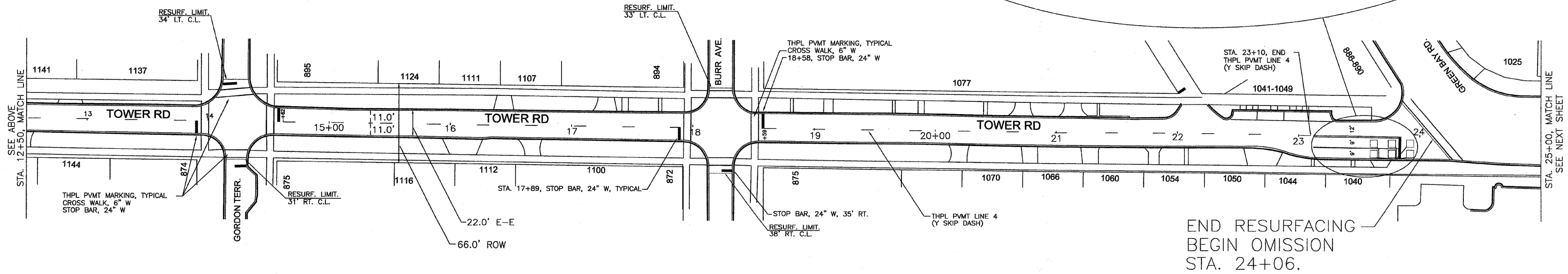
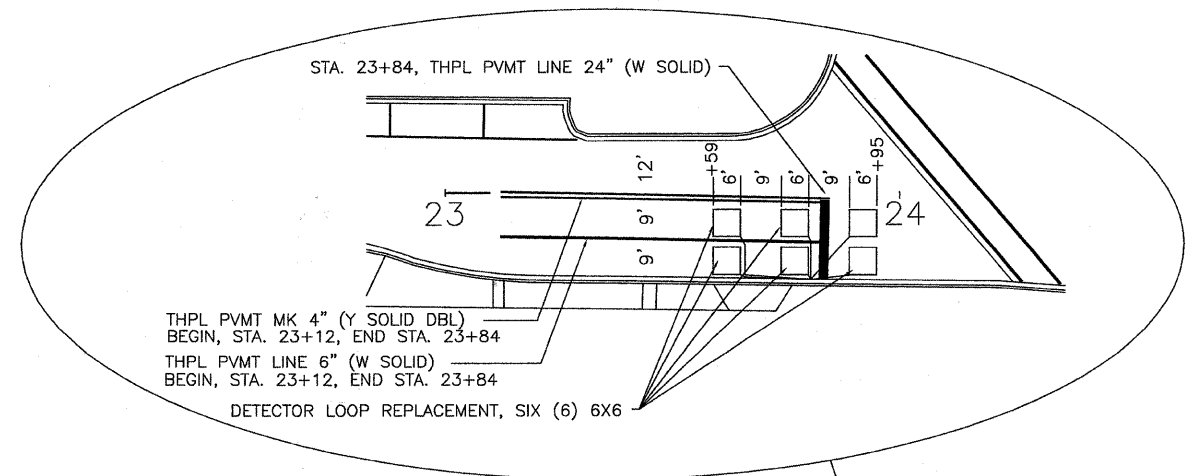


STA. 0+00, RESURFACING PROJECT BEGINS. CONSTRUCT BUTT JOINT, TYPICAL AT RESURFACING LIMITS (INCIDENTAL TO THE CONTRACT).

COLD MILL EXISTING HMA SURFACE COURSE 2 1/2", CLEAN, PRIME AND RESURFACE WITH 3/4" POLYMERIZED LEVELING BINDER, MACHINE METHOD, AND 2" HMA SURFACE COURSE, MIX D, N70.



COLD MILL EXISTING HMA SURFACE COURSE 2 1/2", CLEAN, PRIME AND RESURFACE WITH 3/4" POLYMERIZED LEVELING BINDER, MACHINE METHOD, AND 2" HMA SURFACE COURSE, MIX D, N70.



END RESURFACING
BEGIN OMISSION
STA. 24+06.

DESIGNED	REVISED
DRAWN	REVISED
CHECKED	REVISED
DATE	REVISED

VILLAGE OF WINNETKA 2009 LAPP
RESURFACING PROGRAM

ROADWAY PLAN
TOWER ROAD

SCALE: 1"=40'

STA. 0+00 TO STA. 25+00

F.A.U. RTE.	SECTION	COUNTY	TOTAL SHEETS	SHEET NO.
1282	09-00104-00-RS	COOK	10	4
FED. ROAD DIST. NO.		CONTRACT NO. 63241		
JOB NO. C-91-712-09	ILLINOIS	FED. AID PROJECT ARA-9003 (374)		