


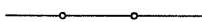
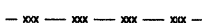




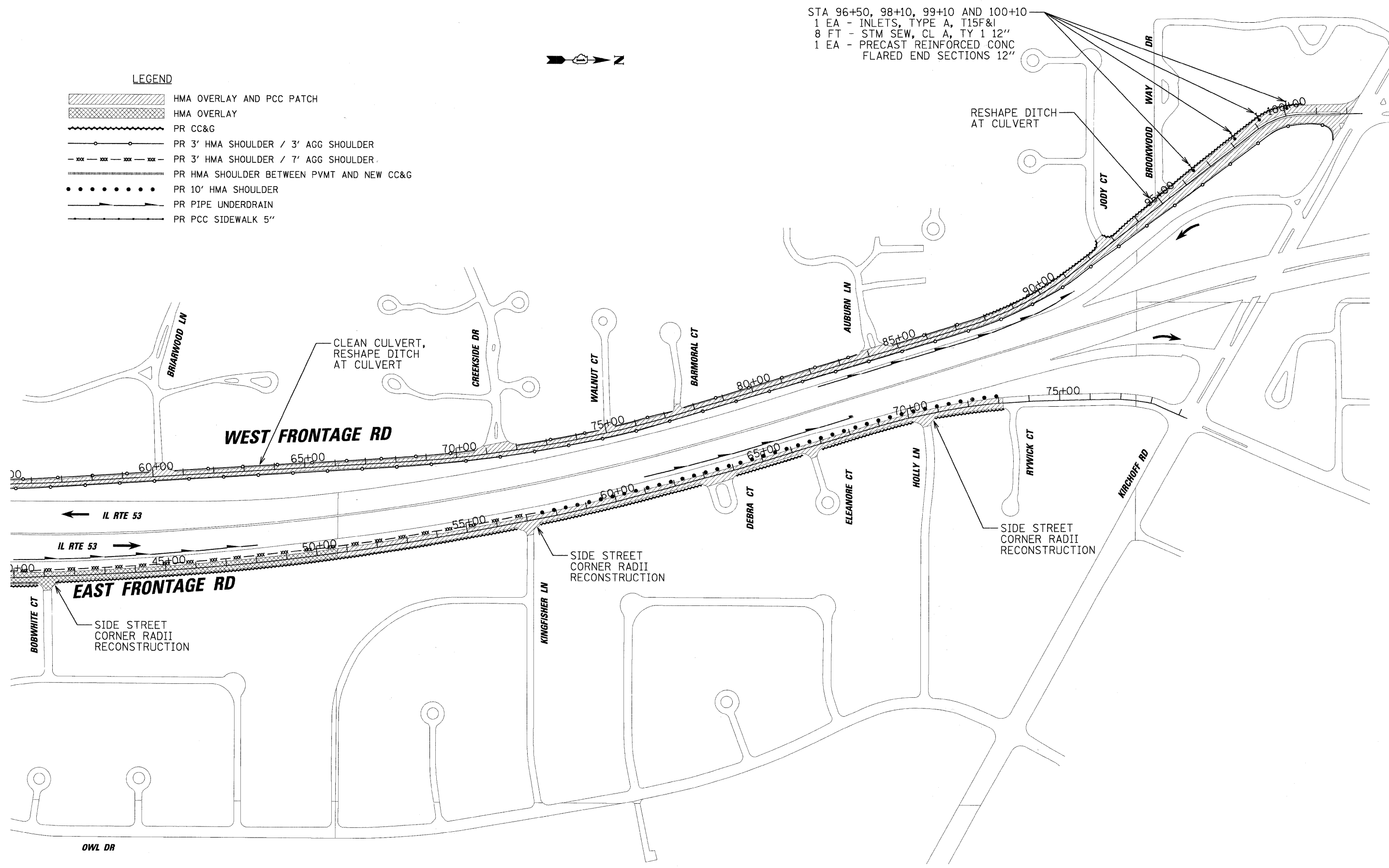


**LEGEND**

-  HMA OVERLAY AND PCC PATCH
-  HMA OVERLAY
-  PR CC&G
-  PR 3' HMA SHOULDER / 3' AGG SHOULDER
-  PR 3' HMA SHOULDER / 7' AGG SHOULDER
-  PR HMA SHOULDER BETWEEN PVMT AND NEW CC&G
-  PR 10' HMA SHOULDER
-  PR PIPE UNDERDRAIN
-  PR PCC SIDEWALK 5"



STA 96+50, 98+10, 99+10 AND 100+10  
 1 EA - INLETS, TYPE A, T15F&I  
 8 FT - STM SEW, CL A, TY 1 12"  
 1 EA - PRECAST REINFORCED CONC  
 FLARED END SECTIONS 12"



FILE NAME =	USER NAME = BLUKE	DESIGNED - BLL	REVISED -	<b>STATE OF ILLINOIS DEPARTMENT OF TRANSPORTATION</b>	<b>EAST &amp; WEST FRONTAGE ROADS IL RTE 53 OVERALL PLAN VIEW - NORTH END</b>	F.A.U. RTE	SECTION	COUNTY	TOTAL SHEETS	SHEET NO.		
2592/2594	09-00091-01-RS	COOK	14			9						
CONTRACT NO. 63243						FED. ROAD DIST. NO. ILLINOIS FED. AID PROJECT						
SCALE: SHEET NO. OF SHEETS STA. TO STA.												