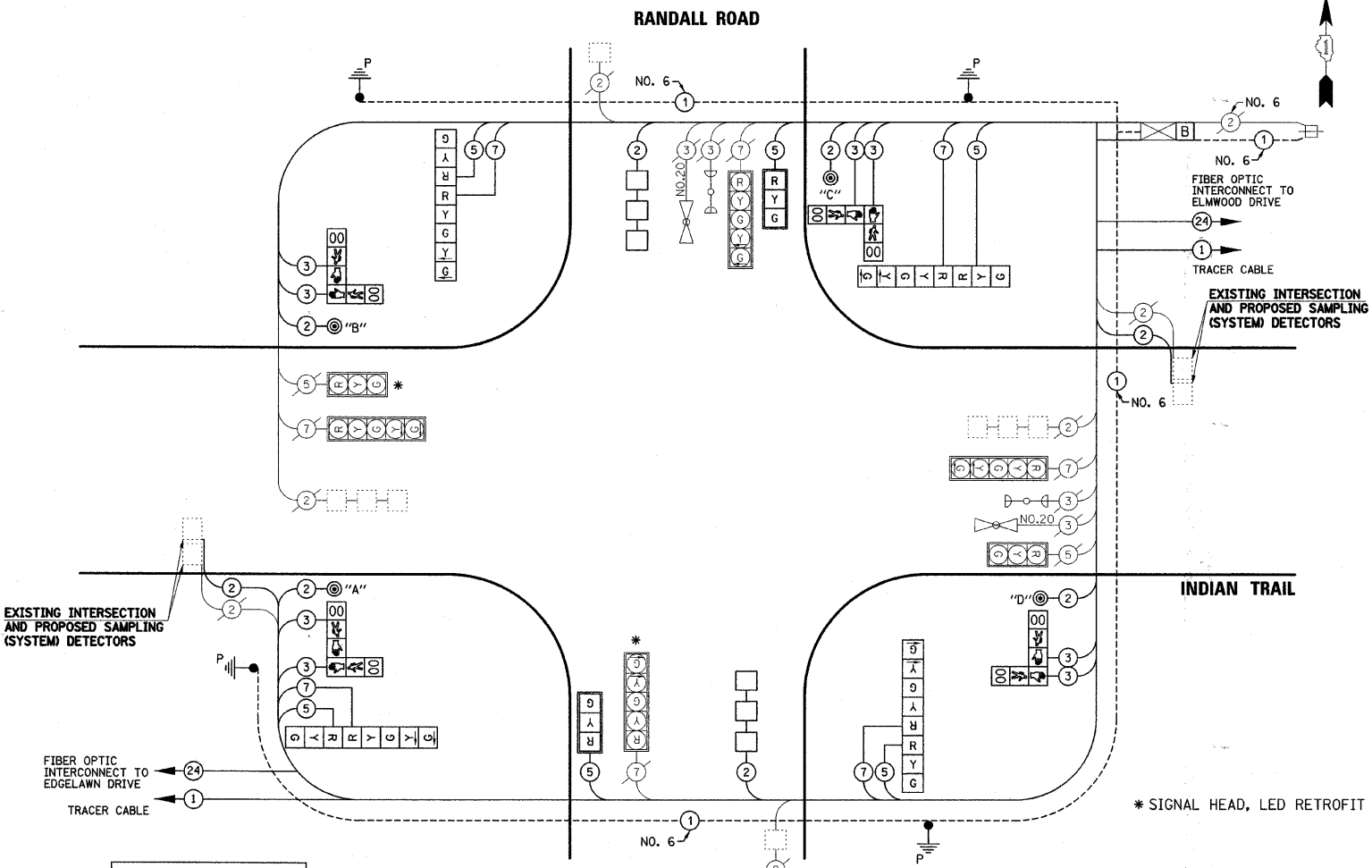
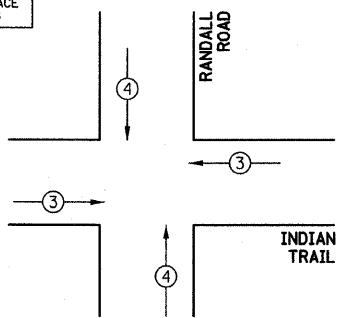


CABLE PLAN LEGEND

- | | | |
|--|--|---|
| | | 8" (200mm) TRAFFIC SIGNAL SECTION |
| | | 12" (300mm) TRAFFIC SIGNAL SECTION |
| | | 12" (300mm) PEDESTRIAN SIGNAL SECTION |
| | | CONTROLLER CABINET |
| | | SERVICE INSTALLATION |
| | | TELEPHONE INSTALLATION |
| | | VEHICLE DETECTOR, INDUCTION LOOP |
| | | MAGNETIC DETECTOR |
| | | EMERGENCY VEHICLE LIGHT DETECTOR |
| | | CONFIRMATION BEACON |
| | | PUSHBUTTON DETECTOR |
| | | LUMINAIRE |
| | | DENOTES NUMBER OF CONDUCTORS. ALL CABLE NO. 14 EXCEPT AS INDICATED. ALL LOOP DETECTOR CABLE TO BE SHIELDED. |
| | | GROUND CABLE IN CONDUIT NO. 6 SOLID COPPER (GREEN) |
| | | FIBER OPTIC CABLE IN CONDUIT NO. 62.5/125 2-MM12F SM12F |
| | | SIGNAL FACE WITH BACKPLATE. "P" INDICATES PROGRAMMED HEAD. |
| | | RAILROAD CONTROL CABINET |
| | | ILLUMINATED SIGN "NO LEFT TURN" |
| | | ILLUMINATED SIGN "NO RIGHT TURN" |
| | | WIRELESS ANTENNA |
| | | GROUND ROD AT HANDHOLE (H), DOUBLE HANDHOLE (H), OR CONTROLLER (C) |
| | | GROUND ROD AT POST (P) OR MAST ARM POLE (MA) |
| | | GROUND ROD AT ELECTRIC SERVICE INSTALLATION |
| | | UNINTERRUPTABLE POWER SUPPLY |
| | | LED STREET NAME SIGN |
| | | VIDEO DETECTION CAMERA |
| | | PAN/TILT/ZOOM CAMERA |



- PUSHBUTTON "A" SHALL PLACE A CALL IN PHASES 2 AND 4
- PUSHBUTTON "B" SHALL PLACE A CALL IN PHASES 4 AND 6
- PUSHBUTTON "C" SHALL PLACE A CALL IN PHASES 6 AND 8
- PUSHBUTTON "D" SHALL PLACE A CALL IN PHASES 2 AND 8



PROPOSED EMERGENCY VEHICLE PREEMPTORS		
PROPOSED EMERGENCY VEHICLE PREEMPTORS	3	4
MOVEMENT	←	→

FOUNDATION (DEPTH)	FT. (m)	CABLE SLACK	FT. (m)	VERTICAL	FT. (m)
TYPE A - POST	4 (1.2)	HANDHOLE	6.5 (2.0)	ALL FOUNDATIONS	3.5 (1.0)
C - CONTROLLER	4 (1.2)	DOUBLE HANDHOLE	13 (4.0)	MAST ARM (L) POLE	20'-H-2= (6m-H-0.6m)
D - CONTROLLER	4 (1.2)	SIGNAL POST	2 (1.0)	BRACKET MOUNTED	13 (4.0)
E - M.A. LENGTH		CONTROLLER CAB.	1 (0.5)	PED. PUSHBUTTON	4 (1.2)
<30'	30" (900mm)	FIBER OPTIC	13 (4.0)	ELECTRIC SERVICE	13.5 (4.1)
<40'	30" (750mm)	ELECTRIC SERVICE	1 (0.5)	SERVICE TO GROUND	13.5 (4.1)
<40'	36" (900mm)	GROUND CABLE	1 (0.5)	POST MOUNTED	6 (1.8)
<50'	36" (900mm)				
>50'	36" (900mm)				

I.D.O.T TRAFFIC SIGNAL INSTALLATION ELECTRICAL SERVICE REQUIREMENTS					
TYPE	NO. LAMPS	WATTAGE		% OPERATION	TOTAL WATTAGE
		INCAND.	LED		
SIGNAL (RED)	16		17	0.50	136
(YELLOW)	16		25	0.25	100
(GREEN)	16		15	0.25	60
ARROW	16		12	0.10	19.2
PED. SIGNAL	8		25	1.00	200
CONTROLLER	1		100	1.00	100
UPS	1		25	1.00	25
TOTAL =					640.2

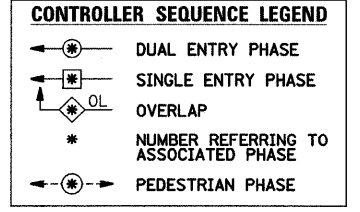
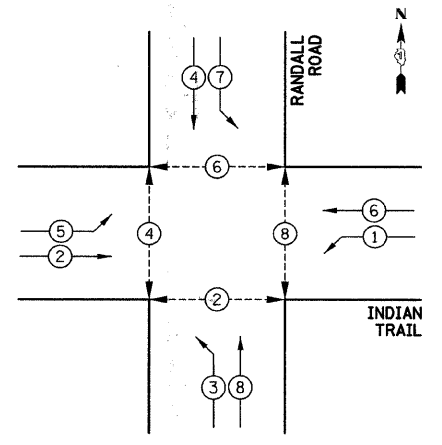
ENERGY COSTS TO: CITY OF AURORA
44 E. DOWNER PLACE
AURORA, ILLINOIS 60507-2067

ENERGY SUPPLY CONTACT: MARK SCHERIBEL
PHONE: (630) 723-2128
COMPANY: COMMONWEALTH EDISON

SCHEDULE OF QUANTITIES

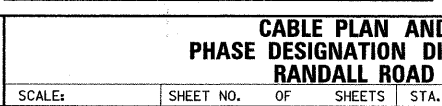
PAY ITEM DESCRIPTION	UNIT	RANDALL ROAD
CONDUIT IN TRENCH, 2 1/2" DIA., GALVANIZED STEEL	FOOT	47
CONDUIT PUSHED, 2 1/2" DIA., GALVANIZED STEEL	FOOT	10
TRENCH AND BACKFILL FOR ELECTRICAL WORK	FOOT	85
MAINTENANCE OF EXISTING TRAFFIC SIGNAL INSTALLATION	EACH	1
ELECTRIC CABLE IN CONDUIT, SIGNAL NO. 14 2C	FOOT	734
ELECTRIC CABLE IN CONDUIT, SIGNAL NO. 14 3C	FOOT	1524
ELECTRIC CABLE IN CONDUIT, SIGNAL NO. 14 5C	FOOT	1090.5
ELECTRIC CABLE IN CONDUIT, SIGNAL NO. 14 7C	FOOT	694
ELECTRIC CABLE IN CONDUIT, LEAD IN, NO. 14 1 PAIR	FOOT	1137
TRAFFIC SIGNAL POST, GALVANIZED STEEL 16 FT.	EACH	4
CONCRETE FOUNDATION, TYPE A	FOOT	16
DRILL EXISTING HANDHOLE	EACH	10
SIGNAL HEAD, LED, 1-FACE, 3-SECTION, MAST ARM MOUNTED	EACH	2
SIGNAL HEAD, LED, 2-FACE, 1-3 SECTION, 1-5 SECTION, BRACKET MOUNTED	EACH	4
PEDESTRIAN SIGNAL HEAD, LED, 2-FACE, BRACKET MOUNTED WITH COUNTDOWN TIMER	EACH	4
TRAFFIC SIGNAL BACKPLATE, LOUVERED	EACH	2
INDUCTIVE LOOP DETECTOR	EACH	4
DETECTOR LOOP, TYPE 1	FOOT	256
PEDESTRIAN PUSH-BUTTON	EACH	4
MODIFY EXISTING CONTROLLER (SPECIAL)	EACH	1
REMOVE ELECTRIC CABLE FROM CONDUIT	FOOT	4342
REMOVE EXISTING TRAFFIC SIGNAL EQUIPMENT	EACH	1
REMOVE EXISTING CONCRETE FOUNDATION	EACH	4
PAINT TRAFFIC SIGNAL POST	EACH	4
UNINTERRUPTABLE POWER SUPPLY	EACH	1
ELECTRIC CABLE IN CONDUIT, GROUNDING, NO. 6 1C	FOOT	671.5
GROUND EXISTING HANDHOLE FRAME AND COVER	EACH	7
SIGNAL HEAD, LED, 3-SECTION, MAST ARM MOUNTED, RETROFIT	EACH	1
SIGNAL HEAD, LED, 5-SECTION, MAST ARM MOUNTED, RETROFIT	EACH	1

CONTROLLER SEQUENCE



THE TRAFFIC SIGNAL CONTROL EQUIPMENT FOR THIS PROJECT SHALL BE "ECONOLITE" TO MATCH THE EXISTING ADJACENT SYSTEM.

PHASE DESIGNATION DIAGRAM



DATE	BY	REVISION

DATE	BY	REVISION