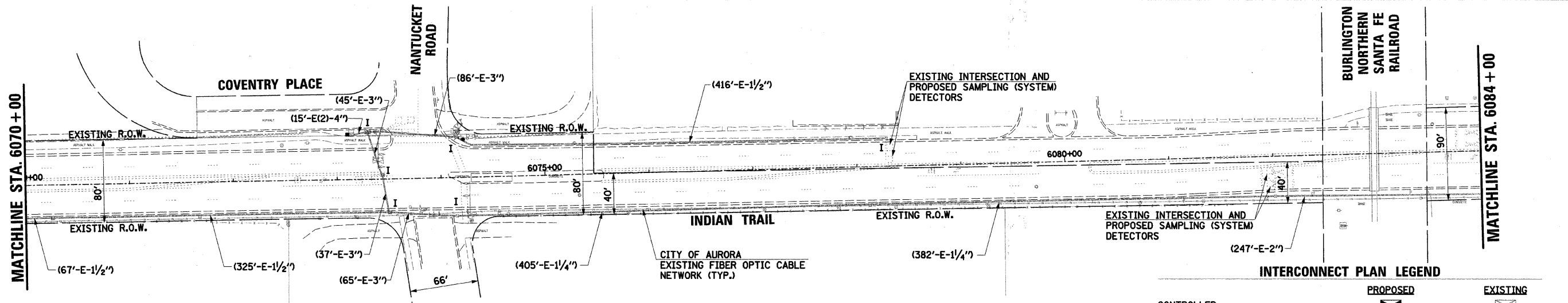
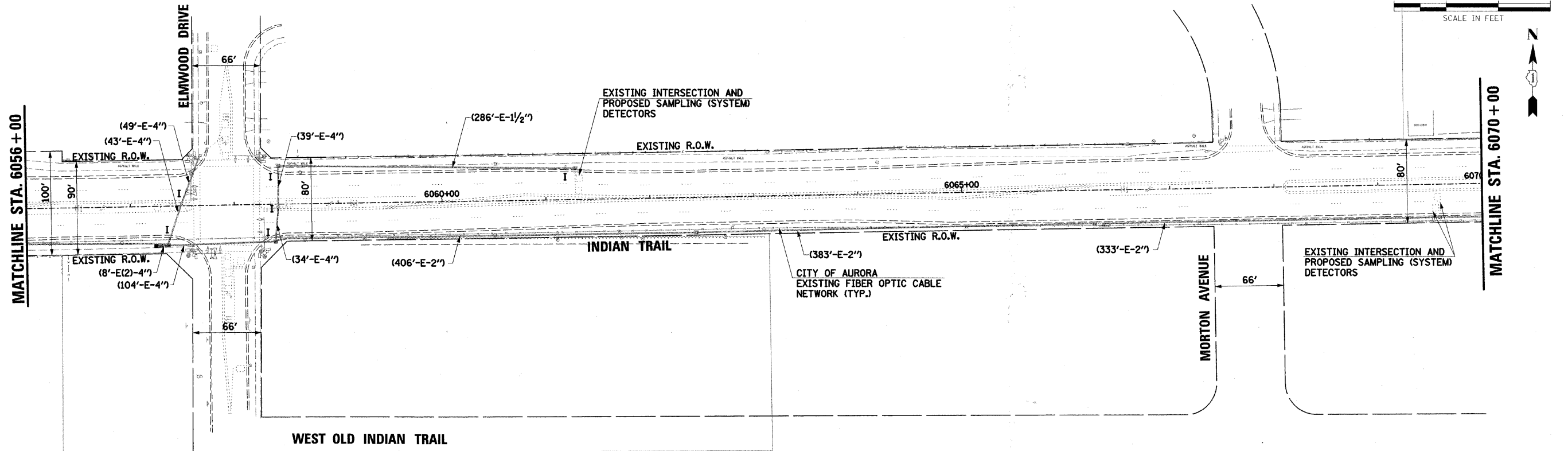


DATE	BY	REVIEWED	DATE
		APPROVED	
		DESIGNED	
		CHECKED	
		NOTED	
		FILE NAME	

DATE	BY	REVIEWED	DATE
		APPROVED	
		DESIGNED	
		CHECKED	
		NOTED	
		FILE NAME	



INTERCONNECT PLAN LEGEND		
	PROPOSED	EXISTING
CONTROLLER	[Symbol]	[Symbol]
HANDHOLE	[Symbol]	[Symbol]
DOUBLE HANDHOLE	[Symbol]	[Symbol]
HEAVY-DUTY HANDHOLE	[Symbol]	[Symbol]
G.S. CONDUIT IN TRENCH (T) OR PUSHED (P)	[Symbol]	[Symbol]
DETECTOR LOOP	[Symbol]	[Symbol]
UNIT DUCT	UD	[Symbol]
SYSTEM	S	[Symbol]
INTERSECTION	IP	I
MAST ARM ASSEMBLY AND POLE, STEEL	[Symbol]	[Symbol]
WIRELESS ANTENNA	[Symbol]	[Symbol]
VIDEO DETECTION ZONE	[Symbol]	[Symbol]

MODIFY EXISTING CONTROLLER (SPECIAL):
 ALL TRAFFIC SIGNAL CONTROLLERS MUST BE FULLY OPERATIONAL AND NTCIP COMPATIBLE PRIOR TO INTEGRATION INTO THE CENTRALIZED TRANSPORTATION MANAGEMENT SYSTEM (SEE SPECIAL PROVISIONS).

RESTORATION OF WORK AREA:
 RESTORATION OF THE TRAFFIC SIGNAL WORK AREA SHALL BE INCIDENTAL TO THE RELATED PAY ITEM SUCH AS FOUNDATION, CONDUIT, HANDHOLE, TRENCH AND BACKFILL, ETC., AND NO EXTRA COMPENSATION SHALL BE ALLOWED. ALL ROADWAY SURFACES SUCH AS SHOULDERS, MEDIANS, SIDEWALKS, PAVEMENT, ETC. SHALL BE REPLACED IN KIND. ALL DAMAGE TO MOWED LAWNS SHALL BE REPLACED WITH AN APPROVED SOD, AND ALL DAMAGE TO UNMOWED FIELDS SHALL BE SEEDED IN ACCORDANCE WITH STANDARD SPECIFICATIONS 252 AND 250 RESPECTIVELY.

FILE NAME = ... \sheets\698_6_sigs-int83.dgn

USER NAME = .USER.
 PLOT SCALE = #SCALE#
 PLOT DATE = 7/20/2009

DESIGNED -	REVISID -
DRAWN BAH	REVISID -
CHECKED APS	REVISID -
DATE -	REVISID -

**STATE OF ILLINOIS
 DEPARTMENT OF TRANSPORTATION**

INTERCONNECT PLAN
 (SHEET 3 OF 4)
 SCALE: SHEET NO. OF SHEETS STA. TO STA.

F.A.U. RTE. 1503	SECTION 08-00271-00-TL	COUNTY KANE	TOTAL SHEETS 30	SHEET NO. 28
FED. ROAD DIST. NO.		ILLINOIS FED. AID PROJECT		CONTRACT NO. 63246