

INDEX OF SHEETS

- 1 COVER SHEET & HIGHWAY STANDARDS
- 2 GENERAL NOTES
- 3 SUMMARY OF QUANTITIES
- 4 TYPICAL SECTIONS
- 5 - 6 SCHEDULE OF QUANTITIES
- 7 - 8 TIE POINTS
- 9 - 11 PLAN VIEWS
- 12 - 13 DETAILS

STANDARDS

- 000001-05 STANDARD SYMBOLS, ABBREVIATIONS AND PATTERNS
- 667101-01 PERMANENT SURVEY MARKERS
- 701001-02 OFF-ROAD OPERATIONS 2L, 2W, MORE THAN 15' (4.5 m) AWAY
- 701006-03 OFF-ROAD OPERATIONS 2L, 2W, 15' (4.5 m) TO 24" (600 mm) FROM PAVEMENT EDGE
- 701011-02 OFF-ROAD MOVING OPERATIONS 2L, 2W, DAY ONLY
- 701301-03 LANE CLOSURE, 2L, 2W, SHORT TIME OPERATIONS
- 701306-02 LANE CLOSURE, 2L, 2W, SLOW MOVING OPERATIONS DAY ONLY, FOR SPEEDS ≥ 45 MPH
- 701311-03 LANE CLOSURE, 2L, 2W, MOVING OPERATIONS - DAY ONLY
- 701901-01 TRAFFIC CONTROL DEVICES
- 780001-02 TYPICAL PAVEMENT MARKINGS
- 781001-03 TYPICAL APPLICATIONS RAISED REFLECTIVE PAVEMENT MARKERS

MICROFILMED _____
 REEL NUMBER _____
 AWARDED _____
 RESIDENT ENGINEER _____
 AS BUILT CHANGES WERE MADE
 ON THE FOLLOWING SHEETS _____

J.U.L.I.E.
 JOINT UTILITY LOCATION INFORMATION FOR EXCAVATION
 1-800-892-0123
 OR 811

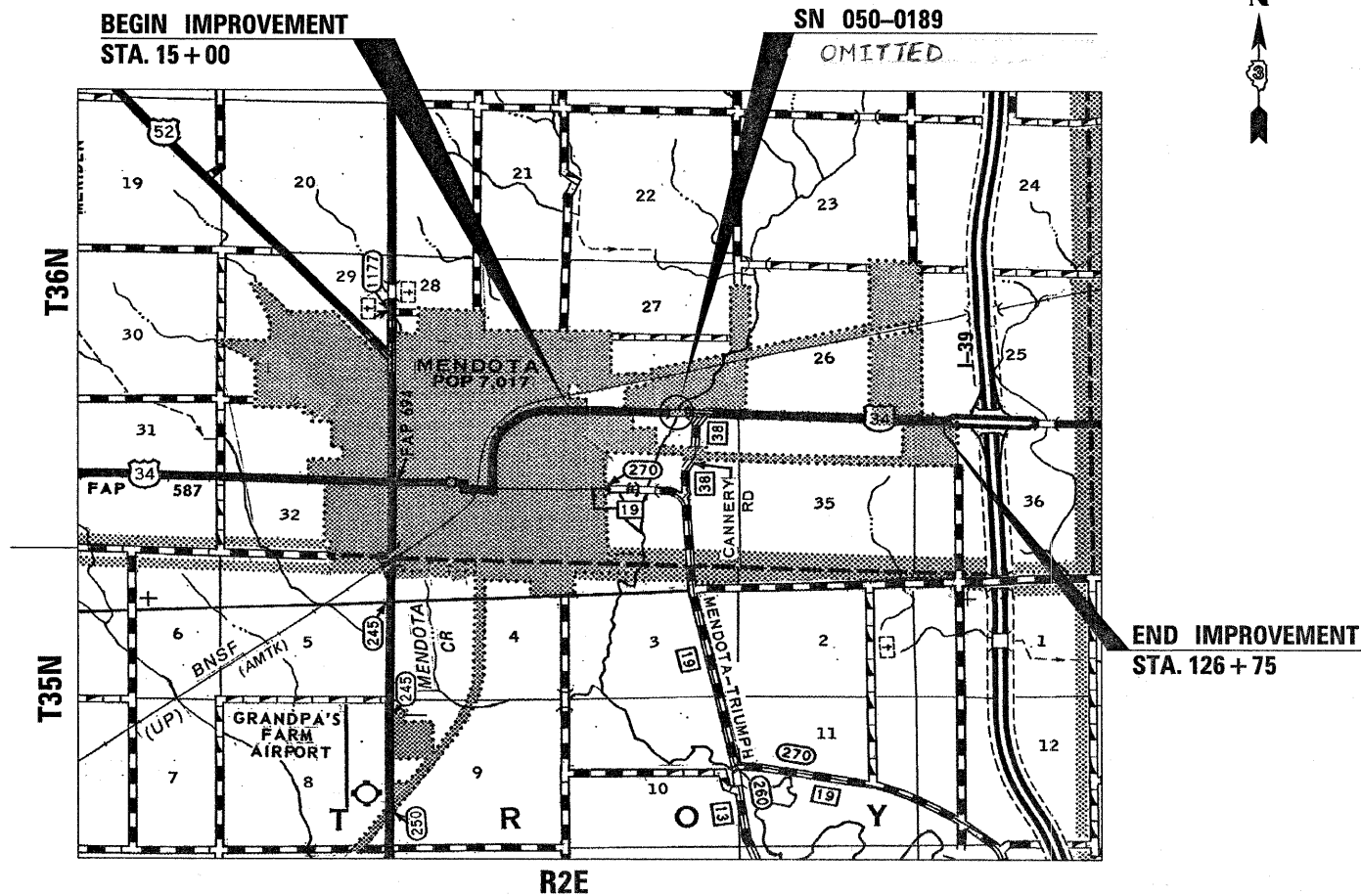
PROJECT ENGINEER: CRAIG REED
 UNIT CHIEF: BRAD DUNCAN
 TOWNSHIP: MENDOTA

CONTRACT NO. 66974

STATE OF ILLINOIS
 DEPARTMENT OF TRANSPORTATION
 DIVISION OF HIGHWAYS
**PROPOSED
 HIGHWAY PLANS**

FAP ROUTE 587 (US 34)
 SECTION (20)RS-5
PROJECT ACHPP-HPP-4094(003)
 3P MILLING AND RESURFACING
 LASALLE COUNTY

C-93-131-09

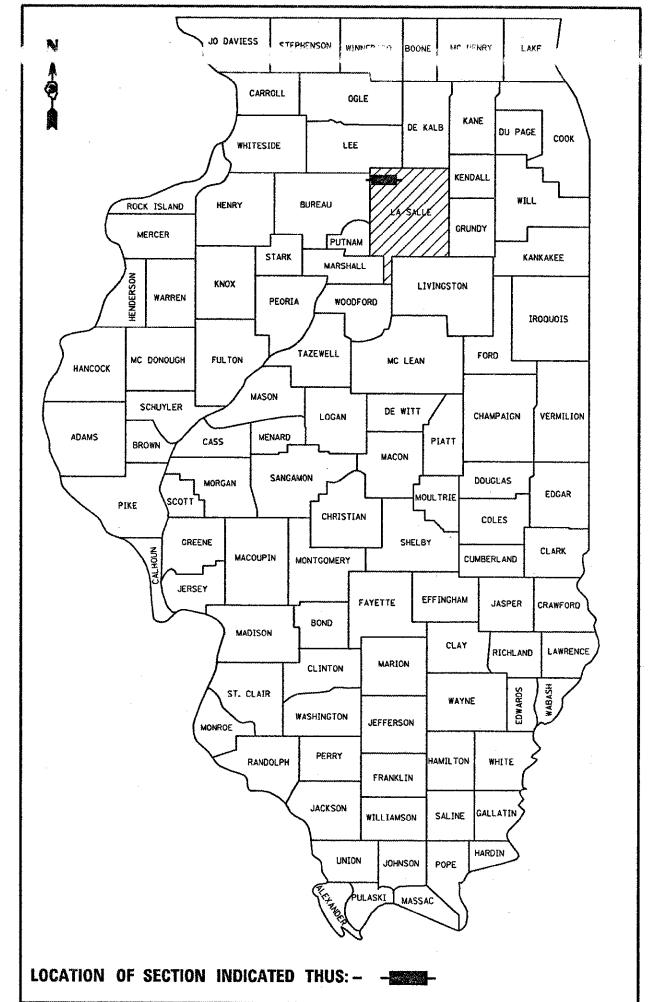


R2E
 NOT TO SCALE

GROSS & NET LENGTH = 11175 FT. = 2.12 MILE

F.A.P. RTE.	SECTION	COUNTY	TOTAL SHEETS	SHEET NO.
587	(20)RS-5	LASALLE	13	1
		ILLINOIS	CONTRACT NO. 66974	

D-93-060-09



LOCATION OF SECTION INDICATED THUS: - [shaded box] -

MINOR ARTERIAL (RURAL)
 2009 ADT = 6500
 PV = 87% SU = 6% MU = 7%

STATE OF ILLINOIS
 DEPARTMENT OF TRANSPORTATION
 DIVISION OF HIGHWAYS

SUBMITTED April 9 2009
Henry Brown
 DEPUTY DIRECTOR OF HIGHWAYS, REGION ENGINEER

May 8, 2009
Charles J. Ingersoll
 ENGINEER OF DESIGN AND ENVIRONMENT

May 8, 2009
Christine M. Reed
 DIRECTOR OF HIGHWAYS, CHIEF ENGINEER

PRINTED BY THE AUTHORITY
 OF THE STATE OF ILLINOIS