


**GENERAL NOTES:**

1. ANY REFERENCE TO THE STANDARDS THROUGHOUT THE PLANS SHALL BE INTERPRETED TO BE THE LATEST STANDARDS OF THE DEPARTMENT AS INCLUDED IN THE PLANS.
2. NO EXCAVATION IS ANTICIPATED ON THIS PROJECT WHICH WOULD AFFECT UTILITIES. J.U.L.I.E. IS TO BE NOTIFIED A MINIMUM OF 48 HOURS IN ADVANCE OF ANY EXCAVATION - (800) 892-0123.
3. IN ADDITION TO FIELD SURVEYS AND AERIAL SURVEYS, PLAN DIMENSIONS AND DETAILS RELATIVE TO THE EXISTING FACILITIES HAVE BEEN TAKEN FROM EXISTING PLANS AND ARE SUBJECT TO CONSTRUCTION VARIATIONS. IT SHALL BE THE CONTRACTOR'S RESPONSIBILITY TO VERIFY SUCH DIMENSIONS AND DETAILS IN THE FIELD. SUCH VARIATIONS SHALL NOT BE A CAUSE FOR ADDITIONAL COMPENSATION DUE TO A CHANGE IN THE SCOPE OF THE WORK. HOWEVER, THE CONTRACTOR WILL BE PAID FOR THE QUANTITY ACTUALLY FURNISHED AT THE BID PRICE FOR THE WORK.

**INDEX OF SHEETS**

- 1 COVERSHEET
- 2 GENERAL NOTES
- 3 SUMMARY OF QUANTITIES
- 4 PLAN AND ELEVATION
- 5-6 PIER PROTECTION CELL DETAILS
- 7 CATWALK DETAILS
- 8-9 PHOTOGRAPHS
- 9A-9C. EXISTING PIER CELL PLANS** 

**LIST OF STANDARDS**

- 000001-05
- 001001-02
- 001006
- 701001-02
- 701006-03
- 701011-02
- 701201-03
- 701311-03
- 701901-01

DISTRICT SIX	
EXAMINED <u>Aug 17</u> 20 <u>09</u>	<i>Louis J. Hassen</i>
OPERATIONS ENGINEER	
EXAMINED <u>Aug 17</u> 20 <u>09</u>	<i>Paul J. Hassen</i>
PROGRAM IMPLEMENTATION ENGINEER	
EXAMINED <u>Aug. 17</u> 20 <u>09</u>	<i>Laura R. Macenik</i> JW
PROGRAM DEVELOPMENT ENGINEER	

**Rev. 9-1-09**

FILE NAME =	USER NAME = madonlavj	DESIGNED -	REVISED -	<b>STATE OF ILLINOIS DEPARTMENT OF TRANSPORTATION</b>	<b>GENERAL NOTES</b>	F.A.P. RTE.	SECTION	COUNTY	TOTAL SHEETS	SHEET NO.
es:\pw\work\VPWIDOT\MADONIAVJ\0156778\0672087-ah1-gennote.dgn		DRAWN -	REVISED -			757	*	SCOTT	2	9
PLOT SCALE = 100.0000' / IN.		CHECKED -	REVISED -					CONTRACT NO. 72D07		
PLOT DATE = Aug-18-2009 11:42:28AM		DATE -	REVISED -		SCALE:	SHEET NO. OF SHEETS	STA.	TO STA.	FED. ROAD DIST. NO.	ILLINOIS FED. AID PROJECT

STATE OF ILLINOIS  
 DEPARTMENT OF PUBLIC WORKS AND BUILDINGS  
 DIVISION OF HIGHWAYS  
**PLANS FOR PROPOSED  
 STATE BOND ISSUE HIGHWAY**

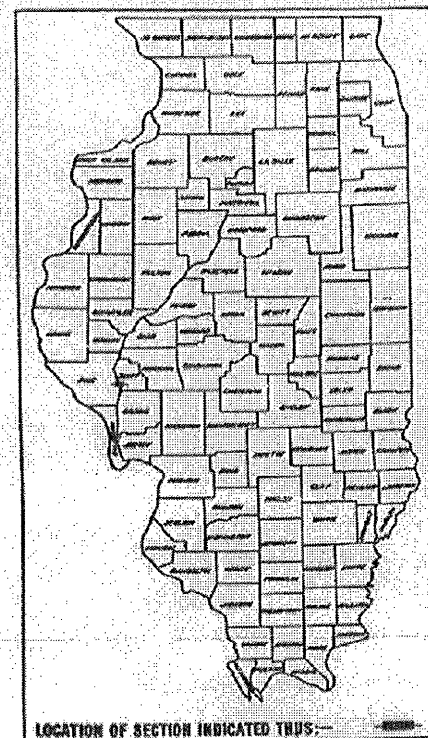
R.R. 34208-18PKF-SCOTT 6  
 PER PLAN SET NO. 7

INDEX OF SHEETS

SUMMARY OF QUANTITIES	1
GENERAL PLAN	2
PIER PROTECTION PLAN & DETAILS	3
PIER PROTECTION DETAILS	4
LADDER & COVER PLATE DETAILS	5
CONSTRUCTION SIGN & PERMANENT BENCH MARK	6

SCALES: PLAN 1"=200 FT.  
 PROFILE VIEW 1"=100 FT.  
 CROSS SECTIONS 1"=20 FT.

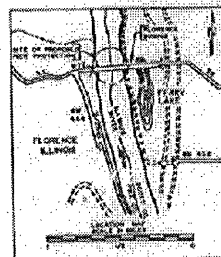
S.B.I. ROUTE 36  
 SECTION 20B-IB  
 PIKE-SCOTT COUNTIES



LOCATION OF SECTION INDICATED TRUS.

SUMMARY OF QUANTITIES

CODE NO.	ITEM	UNIT	QUANTITY
XZ1118	REMOVAL OF EXISTING SHEAR FENCES	EACH	2
B46002	ENGINEER'S FIELD OFFICE, TYPE B	EACH	1
Z10286	PIER PROTECTION CELLS	EACH	2
L05522	NAVIGATION LIGHTS	EACH	2
S10005	HARDWARE	LB.	375
XZ1120	EXPANSION DEVICES	EACH	210
XZ1121	REMOVAL OF EXISTING PILE CLUSTERS	EACH	9
S07001	FURNISHING AND ERECTING STRUCTURAL STEEL	LB.	3,165
S10001	TREATED TIMBER	F.B.M.	3,628
S13006	FURNISHING GALVANIZED PILES OVER 38 FEET	LINE FT.	5,320
S13022	DRIVING TIMBER PILES	LINE FT.	5,320
S04003	CLASS X CONCRETE	CU YD.	96.0



LOCATION MAP

S.B.I. ROUTE 36  
 SECTION 20B-IB  
 THIS SECTION CONSISTS OF  
 CONSTRUCTING PIER PROTECTION  
 CELLS FOR FLORENCE BRIDGE  
 OVER THE ILLINOIS RIVER.

APPROVED: June 21, 1971  
 Carl G. Rimmer

STATE OF ILLINOIS  
 DEPARTMENT OF PUBLIC WORKS AND BUILDINGS  
 DIVISION OF HIGHWAYS  
 PROJECT: 72007-IB-21  
 DESIGNED: V.W. Manning  
 6-22-71  
 DRAWN: Allen Gendrel  
 6-22-71  
 CHECKED: J.R. Burman  
 6-22-71  
 APPROVED: [Signature]  
 6-22-71

REVISED SET 8-6-71

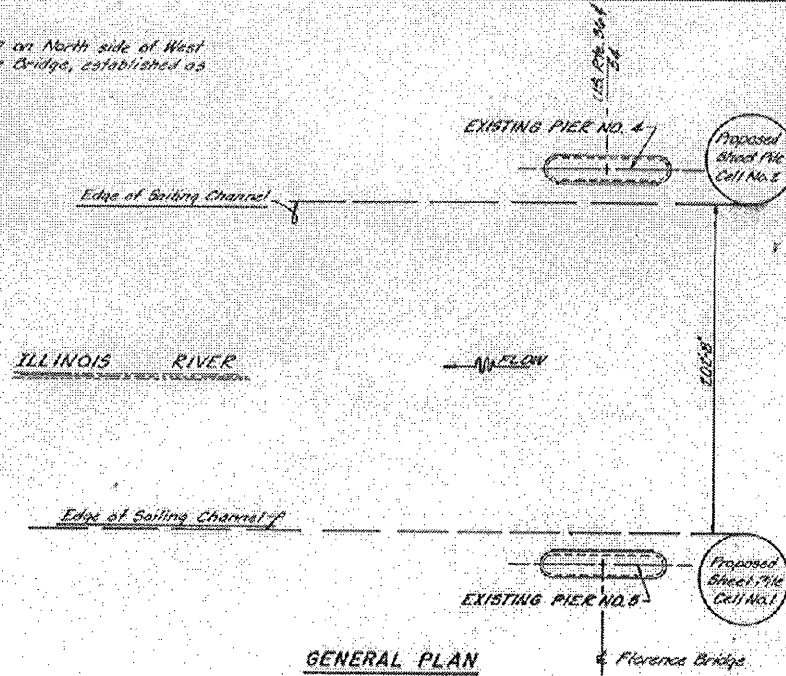
CONTRACT NO. 28675

THE EXISTING PIER CELL PLANS ARE PROVIDED FOR THE CONTRACTOR'S REFERENCE TO DEVISE A PLAN TO REMOVE THE EXISTING PIER CELLS. IT IS UP TO THE CONTRACTOR TO VERIFY THE ACCURACY OF THE ACTUAL CONSTRUCTION.

Added Sheet 9-1-09

FILE NAME =	USER NAME = laughtlinr1	DESIGNED -	REVISED -	STATE OF ILLINOIS DEPARTMENT OF TRANSPORTATION	EXISTING PIER CELL PLANS	F.A.P. RTE.	SECTION	COUNTY	TOTAL SHEETS	SHEET NO.
ct:\pw_work\FWIDOT\LAUGHLINRL\10156778\072007-shr-photo.dgn	DRAWN -	REVISED -	757			•	SCOTT	9A	9	
PLOT SCALE = 12,0000 "/> <td>CHECKED -</td> <td>REVISED -</td> <td colspan="4">CONTRACT NO. 72007</td>	CHECKED -	REVISED -	CONTRACT NO. 72007							
PLOT DATE = Sep-01-2009 11:17:44AM	DATE -	REVISED -	ILLINOIS FED. AID PROJECT							
				SCALE:	SHEET NO. OF SHEETS STA. TO STA.	* OR FLORENCE PIER PROTECTION				

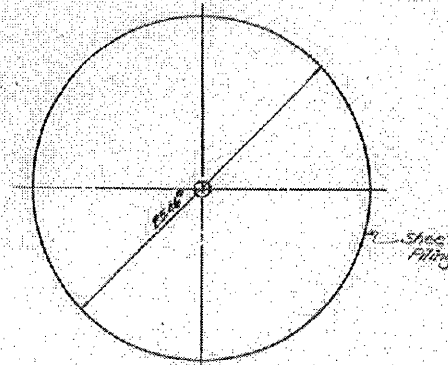
B.M. Elevation of abutment on North side of West abutment headwall, Florence Bridge, established as El. 442.05.



**SCHEDULE OF QUANTITIES**

ITEM	UNIT	QUANTITY
Removal of Exist. Shear Fences	ea.	2
Navigation Lights	ea.	2
Hardware	lb.	375
Expansion Devices	ea.	210
Treated Timber	l.b.m.	5823
Timber Piles	ln. ft.	5520
Removal of Existing Pile Clusters	ea.	4
Structural Steel	lb.	3,165
Pier Protection Cell	EA	2
CLASS X CONC.	C.Y.	76.0

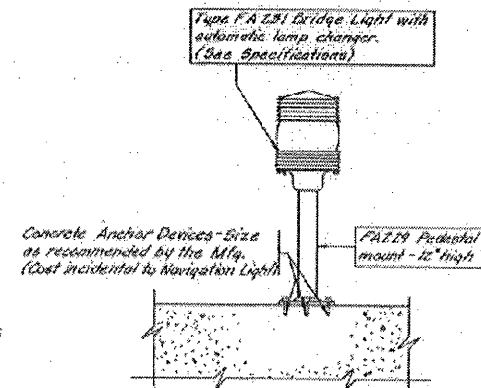
Note: The above Quantities are for Proposed Protection Units of Piers #4 & 6.  
The West upstream shear fence, approx. 200 lin. ft. and the East upstream shear fence, approx. 200 lin. ft. shall be completely removed and disposed of as directed by the Engineer. (See General Notes.)



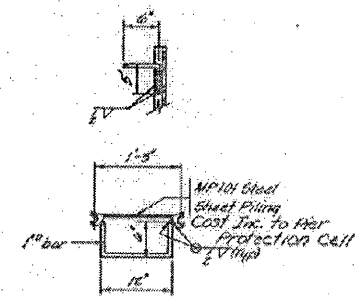
**PLAN - CELL NO. 1**  
Cell No. 2, identical See Plan

**GENERAL NOTES**

- All 2" bolts shall have standard hex nuts as required. All elevations refer to mean sea level 1929 Adj.
- All field welds and all stop welds shall be considered incidental.
- All bolts shall have blind M.I. washers beneath heads. The dimensions shown on the Plans may be varied to meet field conditions as directed by the Engineer.
- The existing Pier Protection system shall be completely removed and disposed of as directed by the Engineer. All existing anchor bolts and anchoring devices shall be removed from the existing pier and the holes grouted with portland cement concrete grout. (Cost is incidental to the contract.)
- The Navigation Lights shall be furnished and installed by the Contractor; the exterior wiring for these lights shall not be included.
- Construction Signs shall be erected on North and South sides of bridge tenders houses as directed by the Engineer.
- All steel tie rods or bolts used for bracing steel sheet piling during construction must be burned off flush with exterior face of steel sheet piling after construction of cell has been completed.

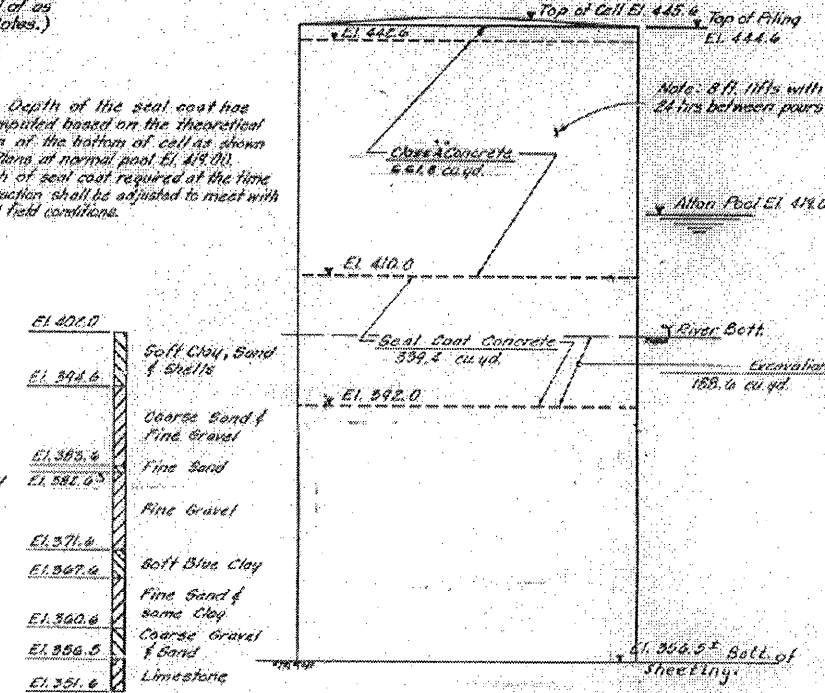


**NAVIGATION LIGHT DETAIL**  
1" - Req'd. (See Special Provisions)



Note: 1" bars shall be spaced @ 15" c/c (Typ.)  
Ladders placed in conc. at top of cell shall be as directed by the Engineer.  
**LADDER DETAIL**  
34" - Req'd.  
(Cost incidental to Pier Prot. Cell)  
Ladder shall be galvanized in accordance with ASTM-A-123.

Note: The Depth of the seal coat has been computed based on the theoretical elevation of the bottom of cell as shown on the Plans at normal pool El. 419.00. The depth of seal coat required at the time of construction shall be adjusted to meet with the actual field conditions.



**ELEVATION - CELLS NO. 1 & 2**

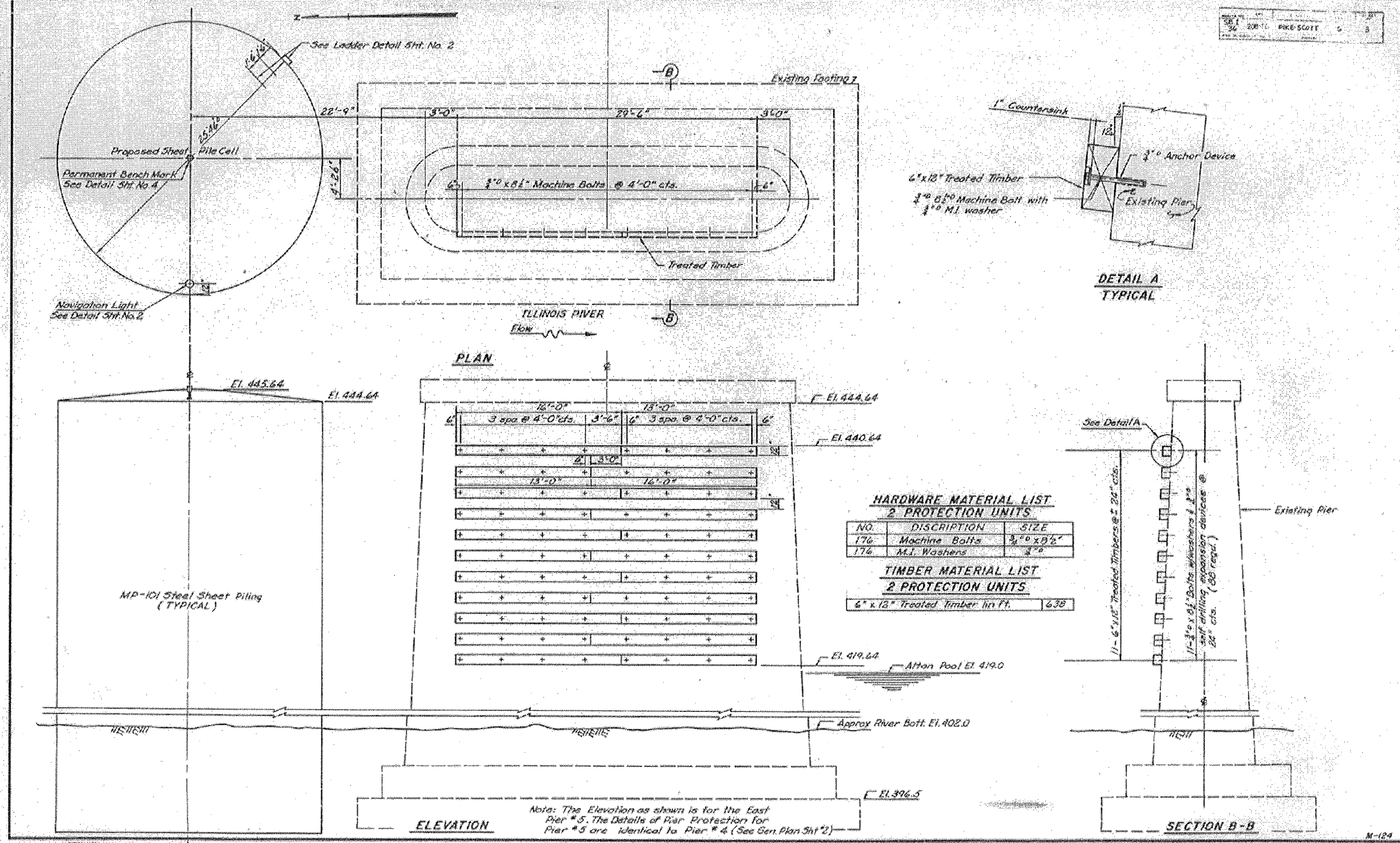
**FLORENCE BRIDGE**  
GENERAL PLAN

FILE NO. CLASSIFICATION NO.  
SHEET NO. 2 OF 6 SHEETS

THE EXISTING PIER CELL PLANS ARE PROVIDED FOR THE CONTRACTOR'S REFERENCE TO DEVISE A PLAN TO REMOVE THE EXISTING PIER CELLS. IT IS UP TO THE CONTRACTOR TO VERIFY THE ACCURACY OF THE ACTUAL CONSTRUCTION.

Added Sheet 9-1-09

FILE NAME =	USER NAME = laughlin-1	DESIGNED -	REVISED -	STATE OF ILLINOIS DEPARTMENT OF TRANSPORTATION	EXISTING PIER CELL PLANS	F.A.P. RTE.	SECTION	COUNTY	TOTAL SHEETS	SHEET NO.	
cd:\pw_work\FWIDOT\LAUGHLIN\LD0156778	72087-shr-photo.dgn	DRAWN -	REVISED -			757		SCOTT	9B	9	
	PLOT SCALE = 12,0000 / IN.	CHECKED -	REVISED -			CONTRACT NO. 72007					
	PLOT DATE = Sep-01-2009 11:17:53AM	DATE -	REVISED -			ILLINOIS FED. AID PROJECT					
						OR ILLINOIS PIER PROTECTION					



**HARDWARE MATERIAL LIST**  
2 PROTECTION UNITS

NO.	DESCRIPTION	SIZE
176	Machine Bolts	3/4" x 2 1/2"
176	M.I. Washers	3/4"

**TIMBER MATERIAL LIST**  
2 PROTECTION UNITS

6" x 12" Treated Timber	lin. ft.	638
-------------------------	----------	-----

**FLORENCE BRIDGE**  
PIER PROTECTION PLAN & DETAILS

THE EXISTING PIER CELL PLANS ARE PROVIDED FOR THE CONTRACTOR'S REFERENCE TO DEVISE A PLAN TO REMOVE THE EXISTING PIER CELLS. IT IS UP TO THE CONTRACTOR TO VERIFY THE ACCURACY OF THE ACTUAL CONSTRUCTION.

Added Sheet 9-1-09

FILE NAME *	USER NAME = laughlinc1	DESIGNED -	REVISED -	<b>STATE OF ILLINOIS DEPARTMENT OF TRANSPORTATION</b>	<b>EXISTING PIER CELL PLANS</b>	F.A.P. R.T.E.	SECTION	COUNTY	TOTAL SHEETS	SHEET NO.	
alpvw-work\KPIDOT\LAUGHLIN\LD0156778\072087-sht-photo.dgn	PLOT SCALE = 12,0000 ' / IN.	DRAWN -	REVISED -			757	.	SCOTT	9C	9	
	PLOT DATE = Sep-01-2009 11:18:01AM	CHECKED -	REVISED -			CONTRACT NO. 72007					
		DATE -	REVISED -			ILLINOIS FED. AID PROJECT					
						* IN FLORENCE PIER PROTECTION					