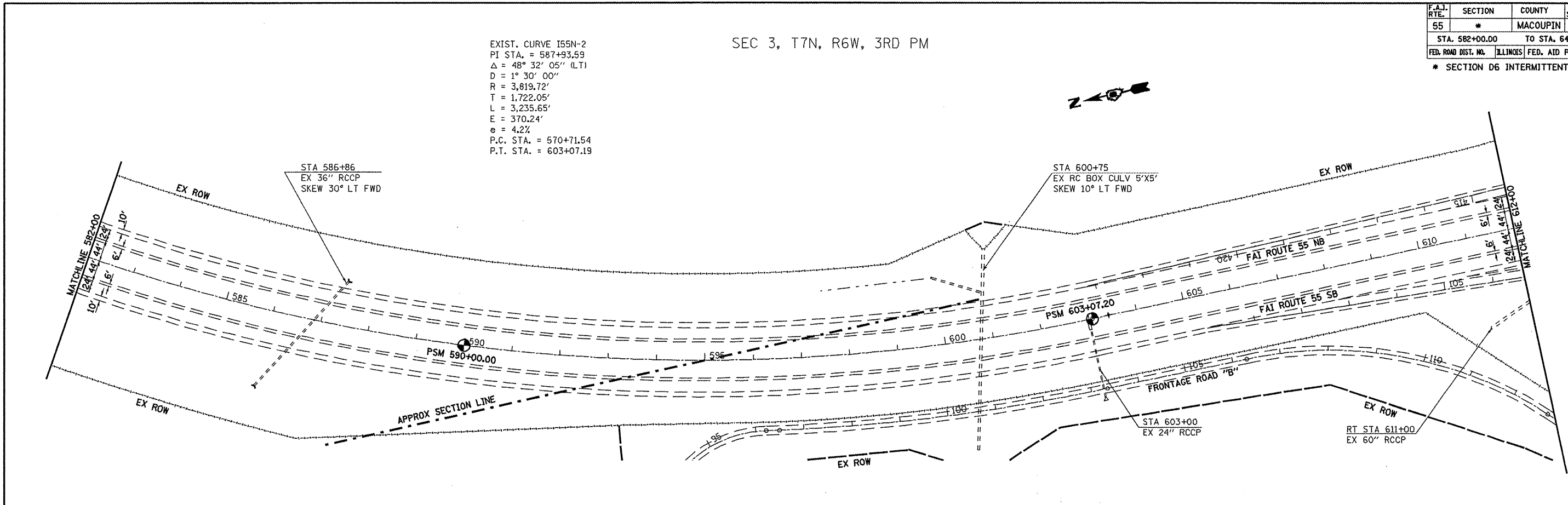


CONTRACT 72D15

F.A.I. RTE.	SECTION	COUNTY	TOTAL SHEETS	SHEET NO.
55	*	MACOUPIN	8	6
STA. 582+00.00 TO STA. 642+00.00			ILLINOIS FED. AID PROJECT	
* SECTION D6 INTERMITTENT RS 2010				

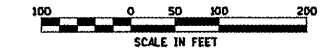
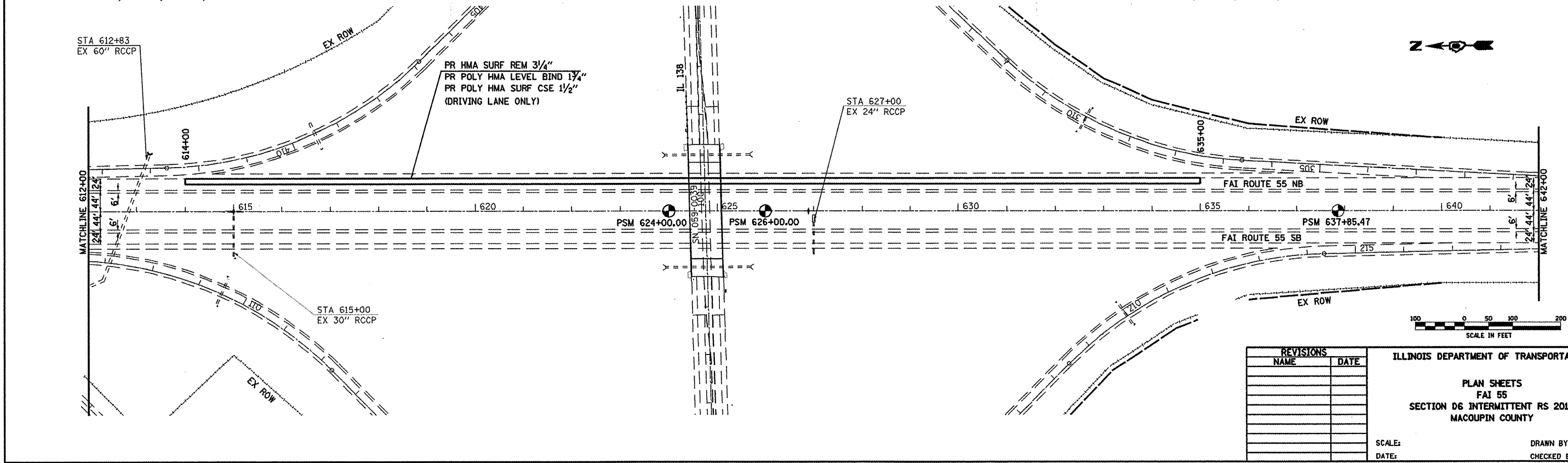
EXIST. CURVE I55N-2
 PI STA. = 587+93.59
 $\Delta = 48^\circ 32' 05''$ (LT)
 $D = 1^\circ 30' 00''$
 $R = 3,819.72'$
 $T = 1,722.05'$
 $L = 3,235.65'$
 $E = 370.24'$
 $e = 4.2\%$
 P.C. STA. = 570+71.54
 P.T. STA. = 603+07.19

SEC 3, T7N, R6W, 3RD PM



SEC 3, T7N, R6W, 3RD PM

SEC 10, T7N, R6W, 3RD PM



REVISIONS	
NAME	DATE

ILLINOIS DEPARTMENT OF TRANSPORTATION

PLAN SHEETS
 FAI 55
 SECTION D6 INTERMITTENT RS 2010
 MACOUPIN COUNTY

SCALE: _____
 DATE: _____

DRAWN BY _____
 CHECKED BY _____

c:\pwork\work\WIDDOT\LAUGH\INRL\06152731\0672D15-shr-double-plan-100.dgn
 Jul-31-2009 08:17:16PM
 #REF:01