

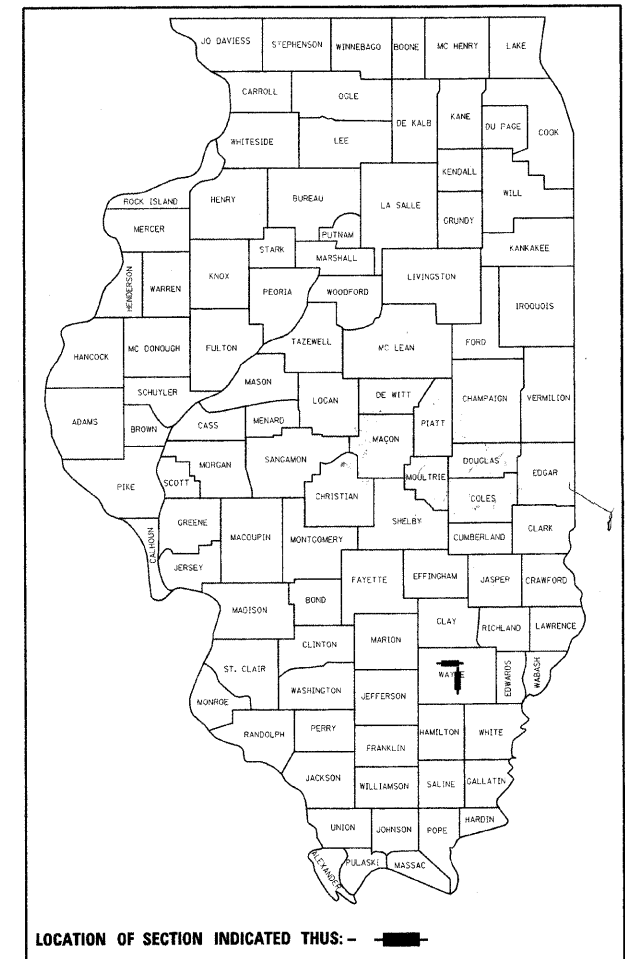
|                     |                 |                    |              |           |
|---------------------|-----------------|--------------------|--------------|-----------|
| F.A.P. RTE.         | SECTION         | COUNTY             | TOTAL SHEETS | SHEET NO. |
| 328                 | (9BR1,10BR1)B-1 | WAYNE              | 67           | 1         |
| FED. ROAD DIST. NO. | ILLINOIS        | CONTRACT NO. 74214 |              |           |

STATE OF ILLINOIS  
DEPARTMENT OF TRANSPORTATION  
DIVISION OF HIGHWAYS  
**PROPOSED  
HIGHWAY PLANS**

FAP ROUTE 328 (US 45)  
SECTION (9BR1,10BR1)B-1  
PROJECT: BRF-0328(026)  
BRIDGE REPLACEMENTS  
WAYNE COUNTY

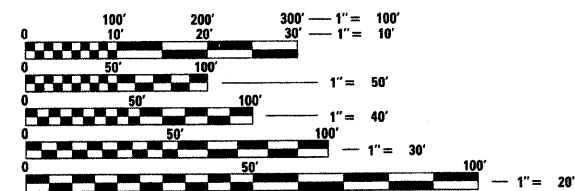
FOR INDEX OF SHEETS, SEE SHEET NO. 2

D-97-001-07



C-97-001-07

2005 ADT = 3500



FULL SIZE PLANS HAVE BEEN PREPARED USING STANDARD ENGINEERING SCALES. REDUCED SIZED PLANS WILL NOT CONFORM TO STANDARD SCALES. IN MAKING MEASUREMENTS ON REDUCED PLANS, THE ABOVE SCALES MAY BE USED.

J.U.L.I.E.  
JOINT UTILITY LOCATION INFORMATION FOR EXCAVATION  
1-800-892-0123  
OR 811

PROJECT ENGINEER: MARK DAUGHERTY  
PROJECT MANAGER: BRIAN LEWIS

CONTRACT NO. 74214

STATE OF ILLINOIS  
DEPARTMENT OF TRANSPORTATION  
DIVISION OF HIGHWAYS

SUBMITTED January 13, 2009

Ry - Rush  
DEPUTY DIRECTOR OF HIGHWAYS, REGION ENGINEER

March 27, 2009  
Charles G. Ingersoll  
ENGINEER OF DESIGN AND ENVIRONMENT

March 27, 2009  
Christine M. Reed  
DIRECTOR OF HIGHWAYS, CHIEF ENGINEER

**PRINTED BY THE AUTHORITY  
OF THE STATE OF ILLINOIS**