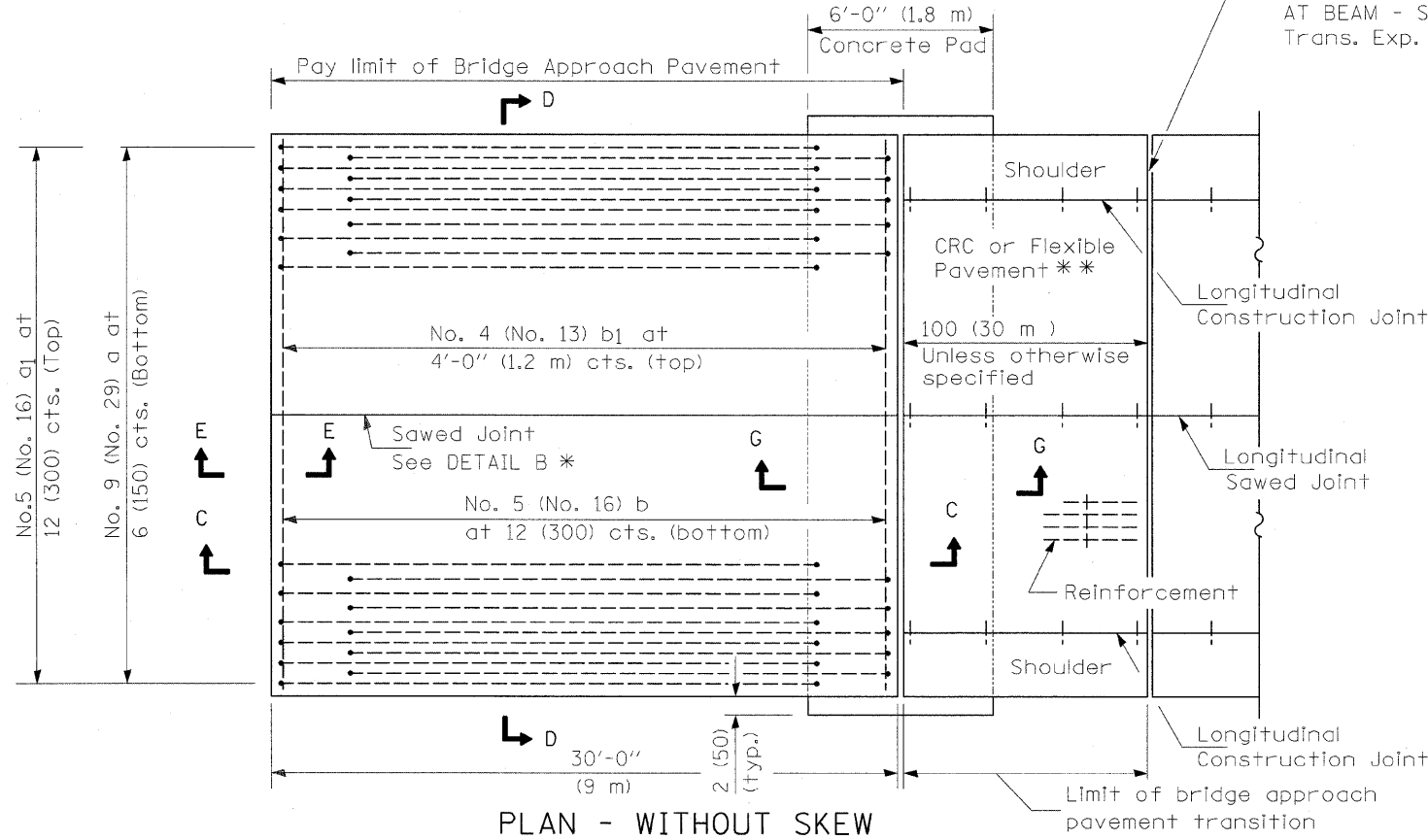


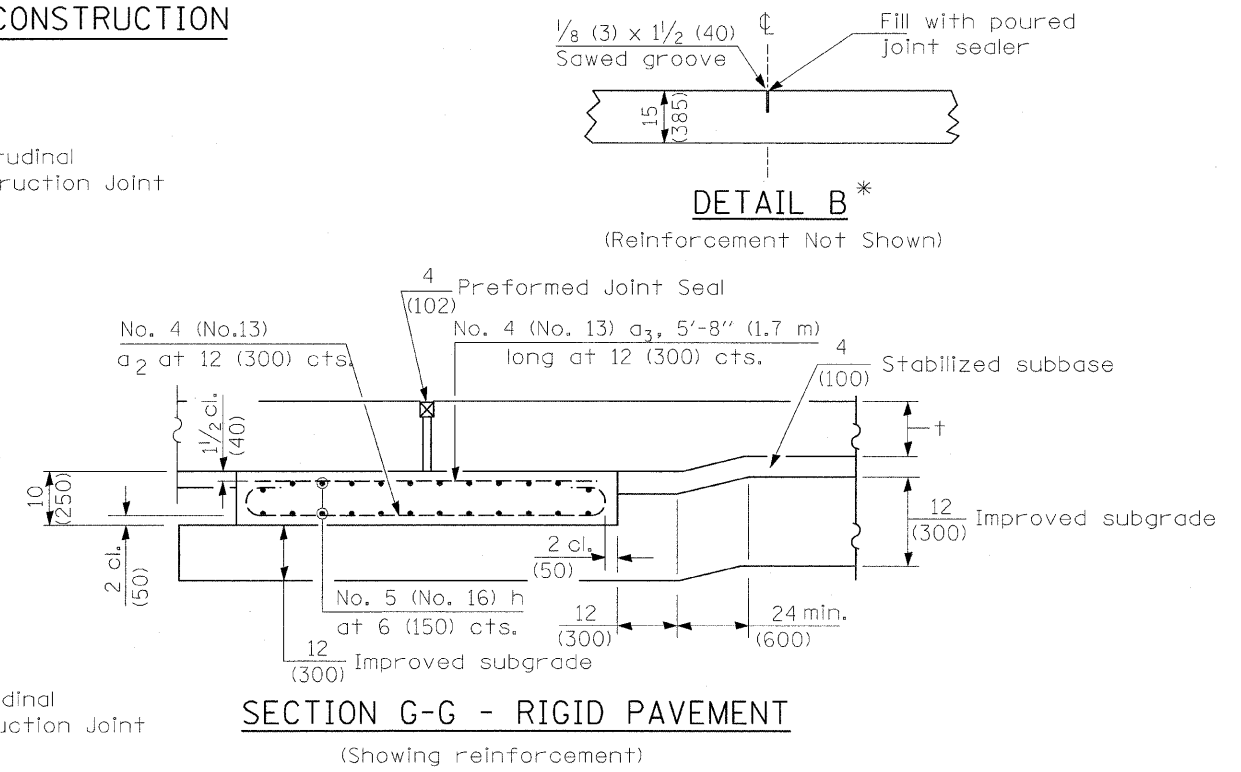
PLAN - WITH SKEW



PLAN - WITHOUT SKEW

* Saw \perp or lane edge if poured two or more lane widths at a time.
 ** Omit Reinforcement, tie bars and Long. sawed Jt. for Flexible Pavement.

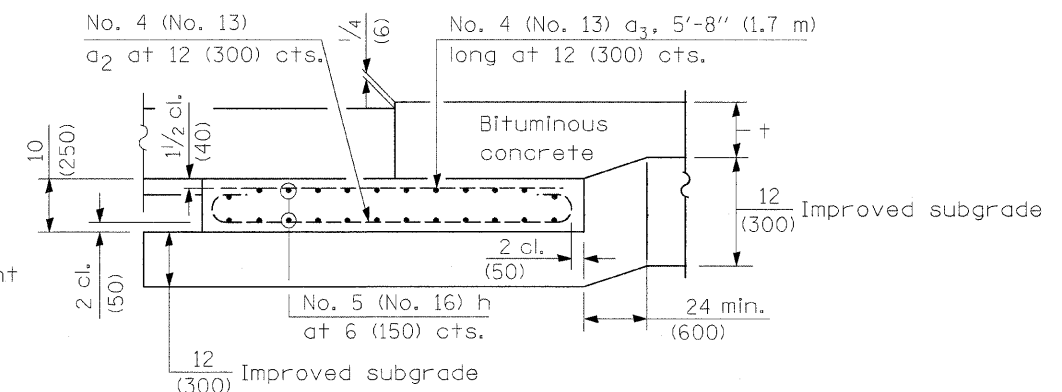
NEW CONSTRUCTION



SECTION G-G - RIGID PAVEMENT

(Showing reinforcement)

Rigid Pavement only:
 Wide Flange Beam Terminal Joint (See DETAIL AT BEAM - Standard 421101 or 421106) or 2 (50) Trans. Exp. Joint as detailed on Standard 420001.



SECTION G-G - FLEXIBLE PAVEMENT

(Showing reinforcement)

GENERAL NOTES

THICKNESS-"t"=Thickness of Pavement.
 See Standard 421001 for reinforcement details not shown.
 See Standard 420001 for joint details not shown.
 All dimensions are in inches (millimeters) unless otherwise shown.

FILE NAME =	USER NAME = steffennk	DESIGNED -	REVISED -	STATE OF ILLINOIS DEPARTMENT OF TRANSPORTATION	BRIDGE APPROACH PAVEMENT DETAILS			F.A.P. RTE.	SECTION	COUNTY	TOTAL SHEETS	SHEET NO.
ca\pw_work\FWIDOT\STEFFENMK\dms50698\74214-shr-detail.dgn		DRAWN -	REVISED -					328	(9BRI, 10BRI)B1	WAYNE	67	17
PLOT SCALE = 50.0000 "/ IN.		CHECKED -	REVISED -					CONTRACT NO. 74214				
PLOT DATE = 1/12/2009		DATE -	REVISED -					ILLINOIS FED. AID PROJECT				
				SCALE:	SHEET NO.	OF SHEETS	STA.	TO STA.				