

F.A.P. RTE.	SECTION	COUNTY	TOTAL SHEETS	SHEET NO.
823	(22BY-1,22BY2,22BR)B-1	WAYNE	142	1
FED. ROAD DIST. NO.	ILLINOIS	CONTRACT NO. 74238		

* 142 + 4 = 146

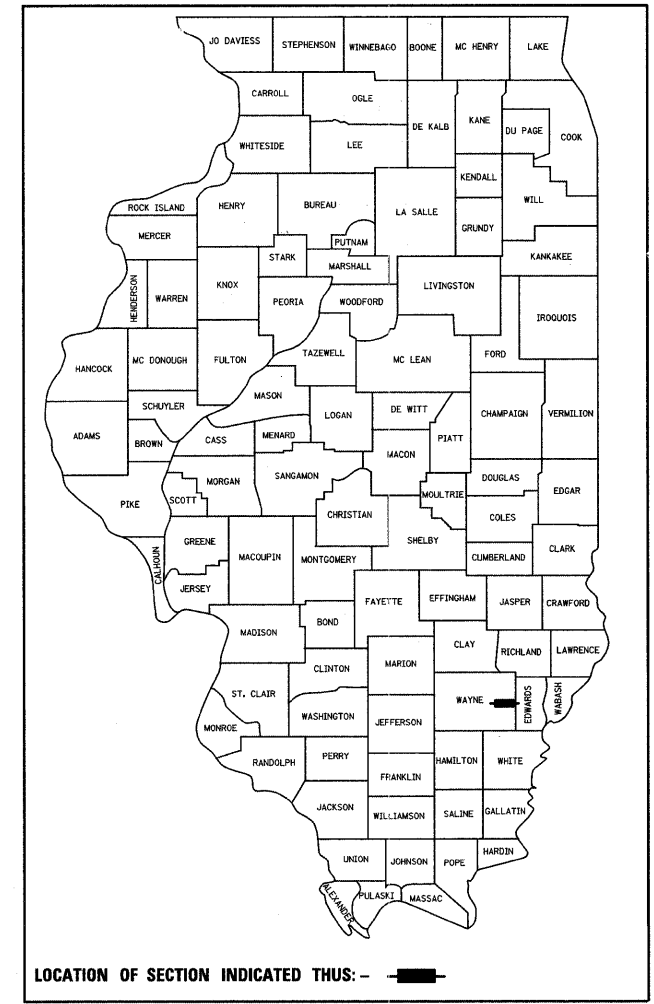
STATE OF ILLINOIS
DEPARTMENT OF TRANSPORTATION
DIVISION OF HIGHWAYS

**PROPOSED
HIGHWAY PLANS**

FAP ROUTE 823 (ILLINOIS ROUTE 15)
SECTION (22BY-1,22BY2,22BR)B-1
PROJECT: **ACBRF-ACF-0823(010)**
JOB NO. C-97-097-05
WAYNE COUNTY

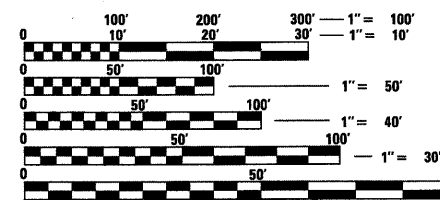
FOR INDEX OF SHEETS, SEE SHEET NO. 2

D-97-059-05



BLANK, WESSELINK, COOK & ASSOCIATES
ENGINEERS - CONSULTANTS
DECATUR, ILLINOIS

MINOR ARTERIAL (NON-URBAN)
ADT=2400 (2007)



PROPOSED IMPROVEMENT BEGINS
Sta 238 + 99.60

PROPOSED SN 096-0071
STA. 301 + 65.00
82'-0" BK-BK ABUTMENTS
SKEW = 30° (RT. FWD.)
DECK ROADWAY WIDTH = 35'-2"

ROADWAY OMISSION
STA. 241 + 00.00 - STA. 288 + 41.59

PROPOSED IMPROVEMENT ENDS
ENDS STA. 308 + 20.00

PROPOSED SN 096-0072
STA. 295 + 41.00
112'-0" BK-BK ABUTMENTS
DECK ROADWAY WIDTH = 35'-2"

PROPOSED DOUBLE 12'x7' BOX CULVERT
STR. #096-2011
STA. 239 + 87.00
25'-9" BK TO BK.
64'-0" OUT TO OUT HEADWALLS
NO SKEW

STATION EQUATIONS

STA. 239 + 37.30 (BK)
= STA. 239 + 37.70 (AH)

STA. 289 + 04.59 (BK)
= STA. 289 + 07.00 (AH)

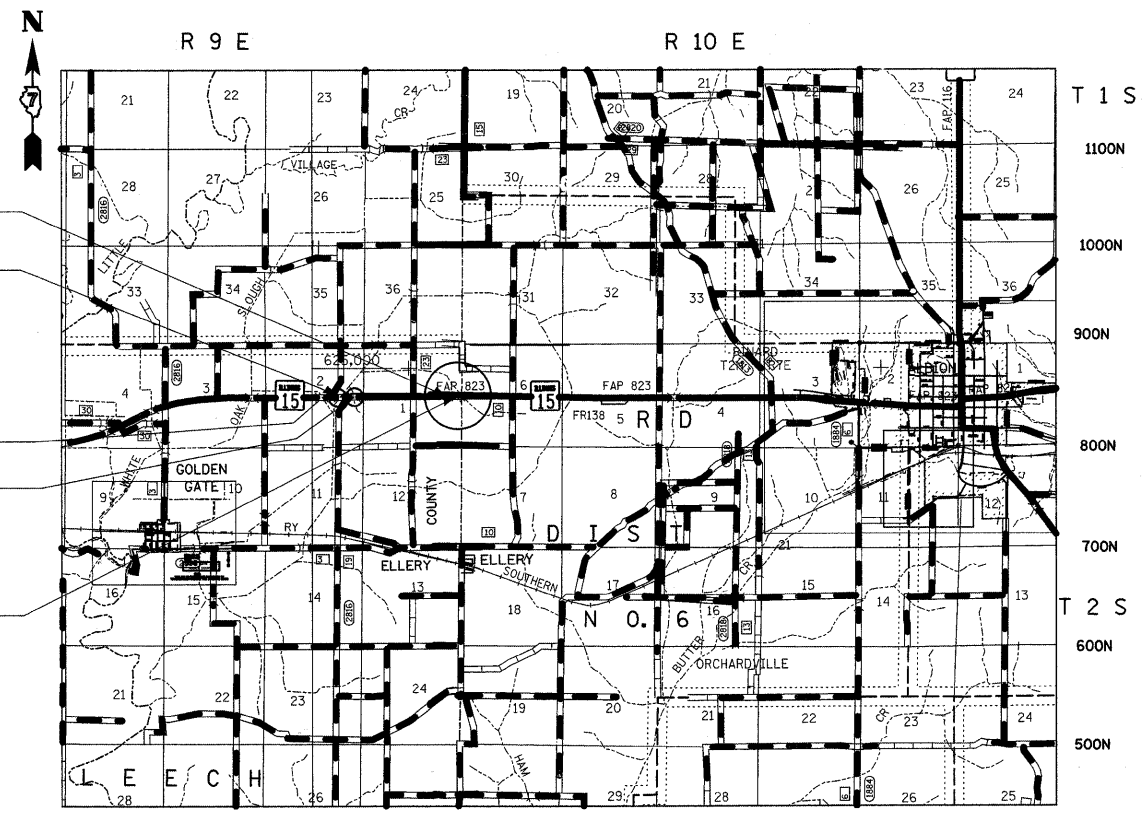
STA. 306 + 00.00 (BK)
= STA. 305 + 96.06 (AH)

FULL SIZE PLANS HAVE BEEN PREPARED USING STANDARD
ENGINEERING SCALES. REDUCED SIZED PLANS WILL NOT
CONFORM TO STANDARD SCALES. IN MAKING MEASUREMENTS
ON REDUCED PLANS, THE ABOVE SCALES MAY BE USED.

J.U.L.I.E.
JOINT UTILITY LOCATION INFORMATION FOR EXCAVATION
1-800-892-0123
OR 811

PROJECT ENGINEER: TOM RONAN
SQUAD LEADER

CONTRACT NO. 74238



LOCATION MAP



GROSS LENGTH OF PROJECT = 6921.5 FEET = 1.31 MILES
NET LENGTH OF PROJECT = 2180.3 FEET = 0.41 MILES

STATE OF ILLINOIS
DEPARTMENT OF TRANSPORTATION
DIVISION OF HIGHWAYS

SUBMITTED March 30 2009

Raymond S. Strickland
DEPUTY DIRECTOR OF HIGHWAYS, REGION ENGINEER

May 8, 20 09
Charles G. Ingersoll
ENGINEER OF DESIGN AND ENVIRONMENT

May 8, 20 09
Christine M. Reed
DIRECTOR OF HIGHWAYS, CHIEF ENGINEER

BLANK, WESSELINK, COOK & ASSOCIATES
ENGINEERS - CONSULTANTS
DECATUR, ILLINOIS



Charles W. Guthrie, Jr.
CHARLES W. GUTHRIE, JR., P.E.
DATE March 26 2009
EXPIRES NOVEMBER 30, 2009

**PRINTED BY THE AUTHORITY
OF THE STATE OF ILLINOIS**