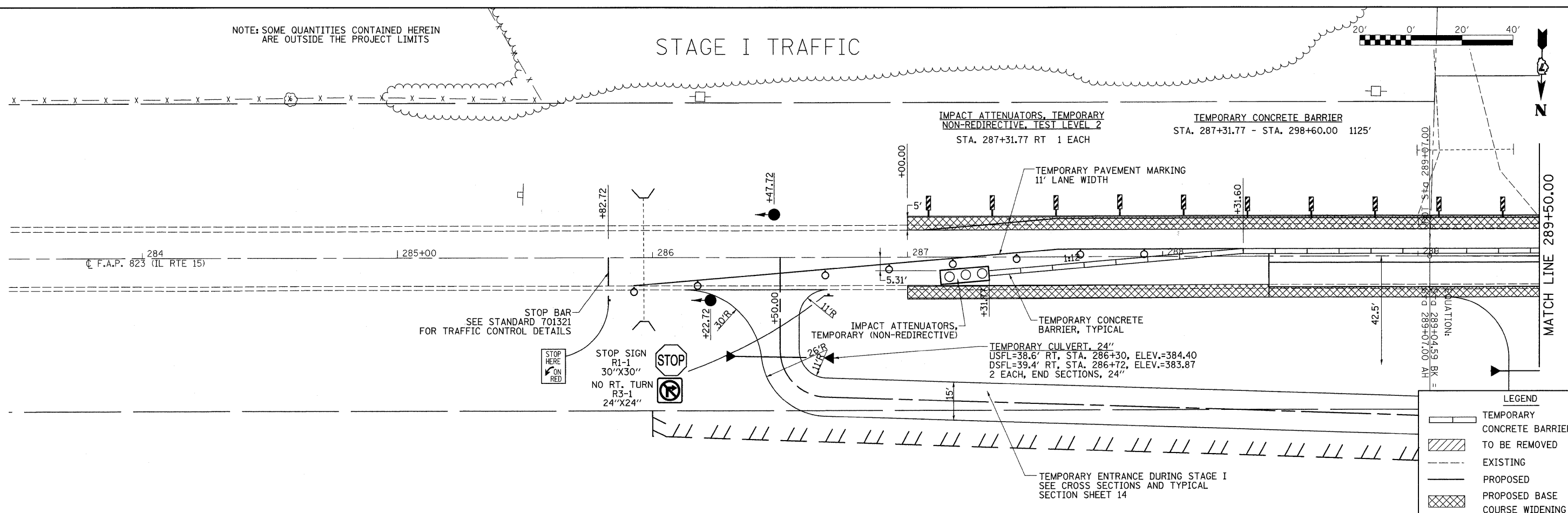


NOTE: SOME QUANTITIES CONTAINED HEREIN ARE OUTSIDE THE PROJECT LIMITS

STAGE I TRAFFIC



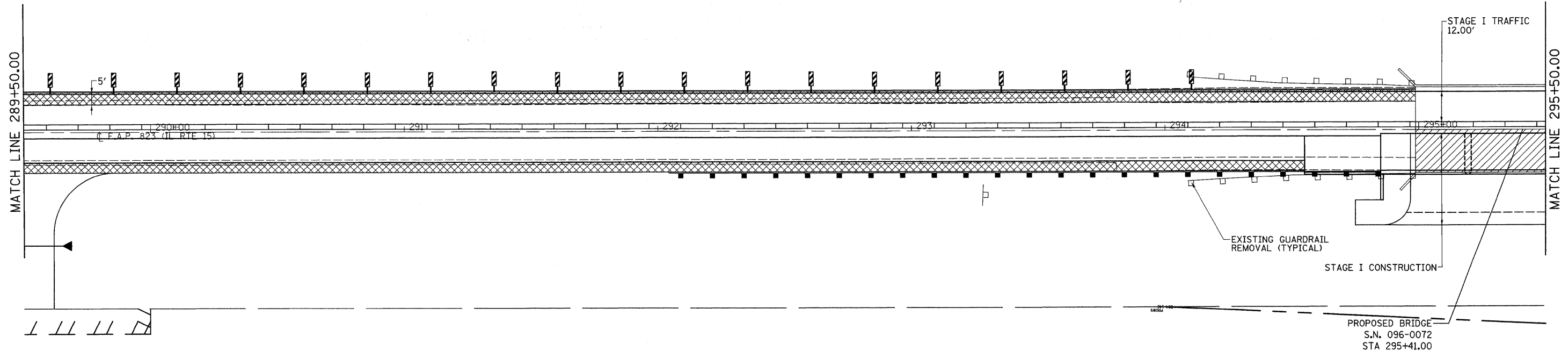
STAGE I TRAFFIC

NOTES FOR PRE-STAGE I

- JACK AND REPOSITION BEARINGS ON SN 096-0016

NOTES FOR STAGE I

- SEE BRIDGE PLANS FOR ADDITIONAL INFORMATION ON STAGE CONSTRUCTION
- THE CONTRACTOR SHALL PROVIDE CONTINUOUS ACCESS TO ALL ENTRANCES DURING CONSTRUCTION.
- STOP BARS TO BE LOCATED PER STD. 701321.



FILE NAME = P:\0340601.04\FIN0960055\Drawings\StageConst\stage_plans16&17.dgn	USER NAME = rook	DESIGNED -	REVISED -	STATE OF ILLINOIS DEPARTMENT OF TRANSPORTATION	STAGE I CONSTRUCTION SN 096-0072		F.A.P. RTE. 823	SECTION (22BY-1,22BY2,22BR0B-1)	COUNTY WAYNE	TOTAL SHEETS 142	SHEET NO. 21	
PLOT SCALE = 20,0000' / IN.	CHECKED -	REVISED -	REVISED -		SCALE:	SHEET NO. 1 OF 6 SHEETS	STA. TO STA.	CONTRACT NO. 74238		ILLINOIS FED. AID PROJECT		
PLOT DATE = 3/26/2009	DATE -	REVISED -	REVISED -									