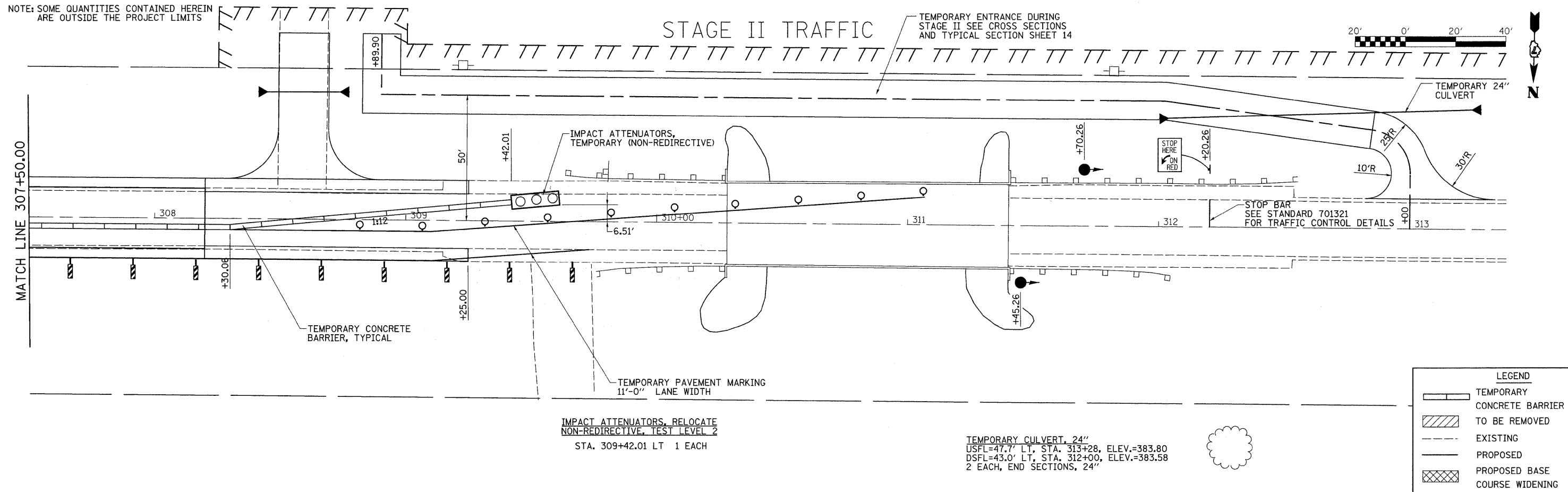
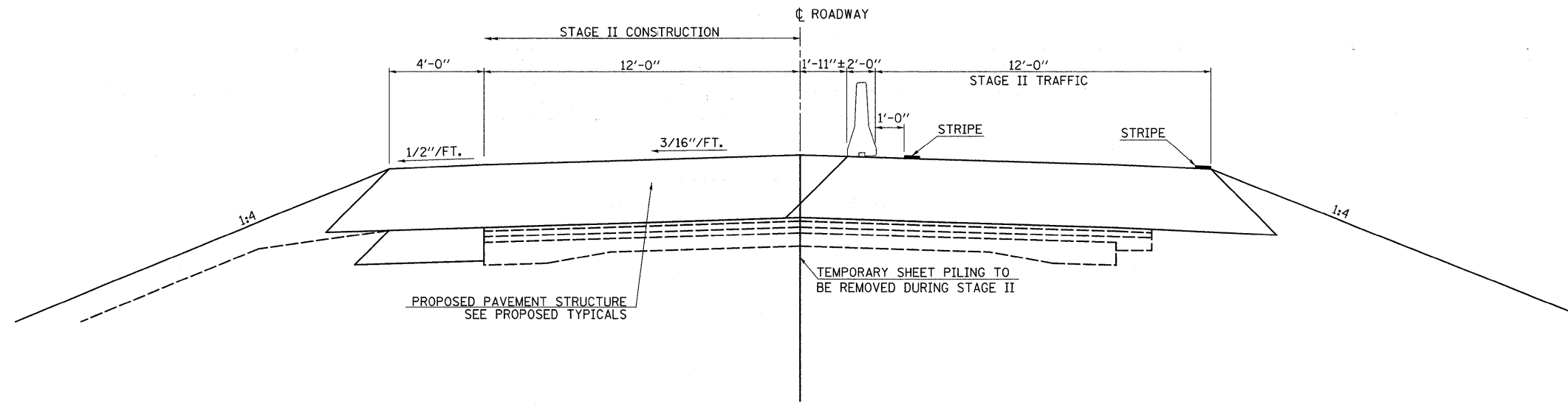


NOTE: SOME QUANTITIES CONTAINED HEREIN ARE OUTSIDE THE PROJECT LIMITS



- NOTES FOR STAGE II
- SEE BRIDGE PLANS FOR ADDITIONAL INFORMATION ON STAGE CONSTRUCTION
 - THE CONTRACTOR SHALL PROVIDE CONTINUOUS ACCESS TO ALL ENTRANCES DURING CONSTRUCTION.
 - STOP BARS TO BE LOCATED PER STD. 701321.



PROPOSED TYPICAL SECTION (STAGE II)

- STAGE II NOTES
- RELOCATE SIGNS, TEMPORARY BARRIERS, ETC IN ACCORDANCE WITH TRAFFIC CONTROL STANDARD 701321 AND AS SHOWN ON THIS PLAN.
 - PLACE TEMPORARY PAVEMENT MARKING LINE TO ALLOW FOR A 11'-6" DRIVING LANE.
 - REMOVE THE STAGE II PORTION OF THE EXISTING STRUCTURE, PAVEMENT AND GUARDRAIL.
 - CONSTRUCT THE STAGE II PORTION OF THE NEW BRIDGE AND ROADWAY.
 - CONSTRUCT DITCHES, SEEDING, AND MULCH.
 - REMOVE TEMPORARY BARRIERS, SIGNALS, AND SIGNS ASSOCIATED WITH TRAFFIC CONTROL STANDARD 701321.
 - RESURFACE ROADWAY UTILIZING TRAFFIC CONTROL STANDARD 701306.

FILE NAME =	USER NAME = rcook	DESIGNED -	REVISED -	STATE OF ILLINOIS DEPARTMENT OF TRANSPORTATION	STAGE II CONSTRUCTION			F.A.P. RTE.	SECTION	COUNTY	TOTAL SHEETS	SHEET NO.	
P:\0340601.04.FIN0960055\Drawings\StageConst\stage_plans\16&17.dgn		DRAWN -	REVISED -		SCALE:	SHEET NO. 6 OF 6 SHEETS	STA.	TO STA.	823	(22BY-1,22BY2,22BR)B-1	WAYNE	142	26
		CHECKED -	REVISED -							CONTRACT NO. 74238			
		DATE -	REVISED -							ILLINOIS FED. AID PROJECT			