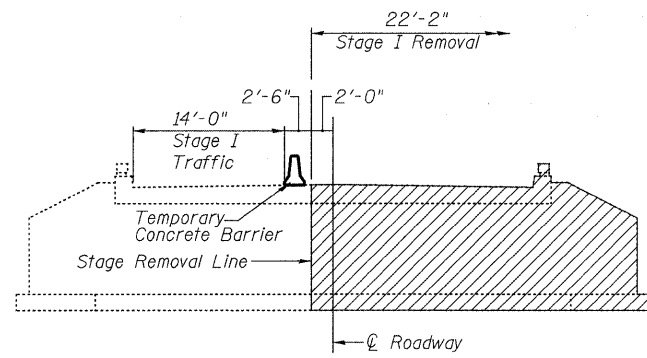
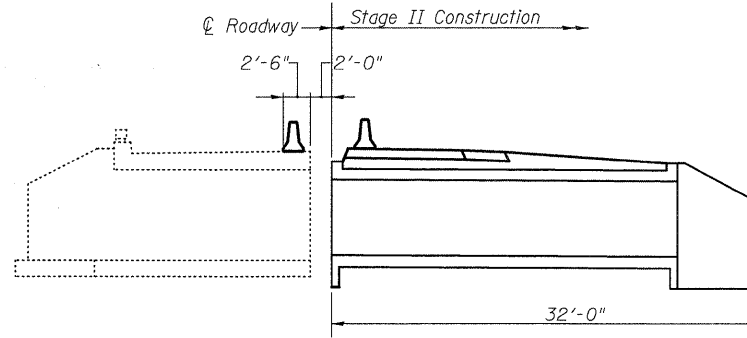


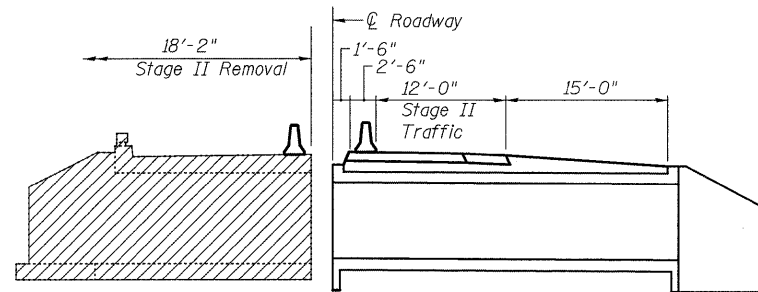
STATE OF ILLINOIS
DEPARTMENT OF TRANSPORTATION



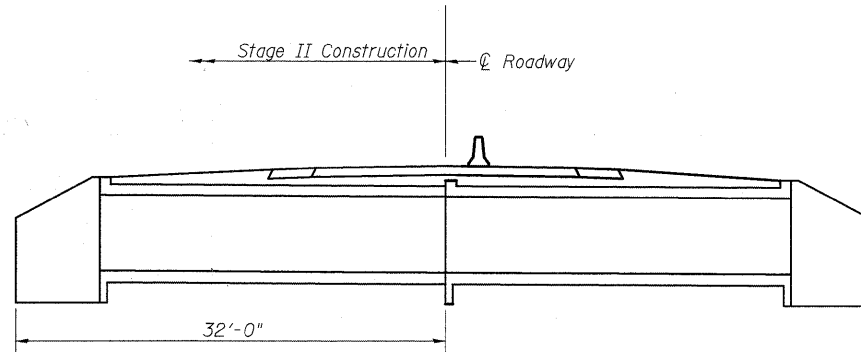
STAGE I REMOVAL
(Looking West)



STAGE I CONSTRUCTION
(Looking West)



STAGE II REMOVAL
(Looking West)



STAGE II CONSTRUCTION
(Looking West)

NOTES

A cantilevered sheet piling design does not appear feasible and additional members or other retention systems may be necessary. The Contractor shall submit a temporary soil retention system design including plan details and calculations for review and acceptance by the Engineer.

Hatched areas indicate Removal of Existing Structures.

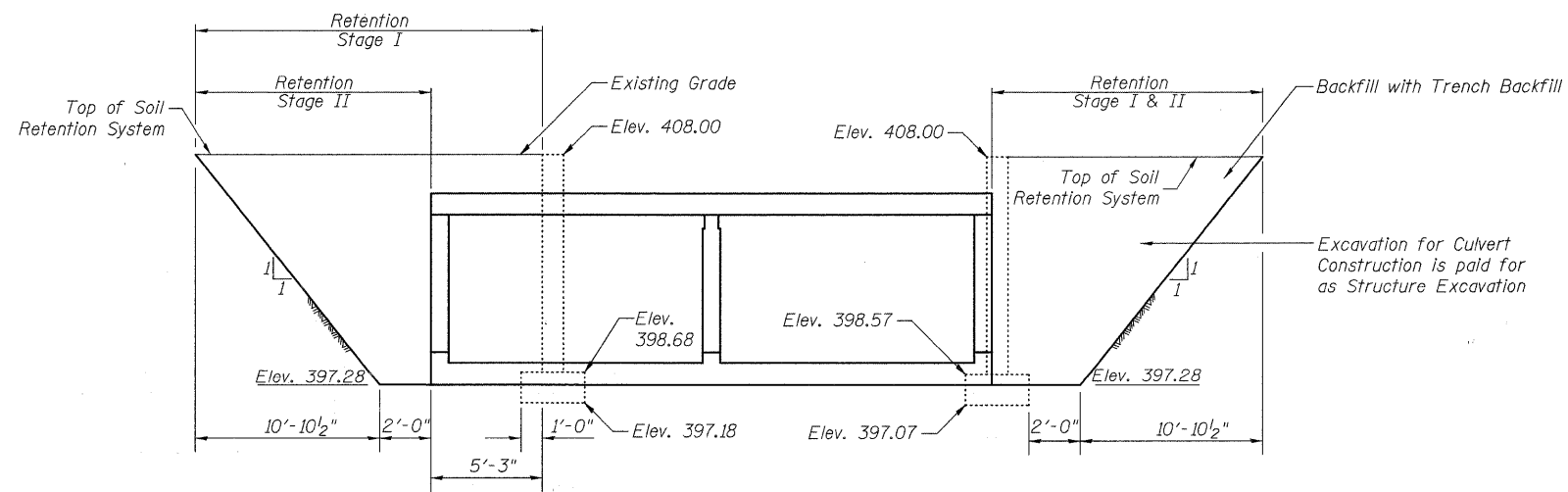
The Contractor shall excavate behind the existing abutment walls prior to removal of the existing superstructure and shall saw cut the existing abutment walls at the Stage Removal Line prior to Stage I Superstructure Removal.

For details of Temporary Concrete Barrier, see sheet 3 of 7.

See roadway plans for traffic control during construction.

Cost of sawcutting is included in Removal of Existing Structures.

For quantity of Temporary Concrete Barrier, see Roadway Plans.



TEMPORARY SOIL RETENTION SYSTEM
(Slope and distances shown along \varnothing Roadway)

STAGED CONSTRUCTION DETAILS
IL 15 OVER TRIBUTARY TO
UNION DRAINAGE DITCH
STATION 239+87.00
STRUCTURE NO. 096-2011

SHEET NO. 2 OF 7 SHEETS	F.A.P. RTE.	SECTION	COUNTY	TOTAL SHEETS	SHEET NO.
	823	(22BR1) B-1	WAYNE	142	32
CONTRACT NO. 74238					
FED. ROAD DIST. NO. 7 ILLINOIS FED. AID PROJECT					