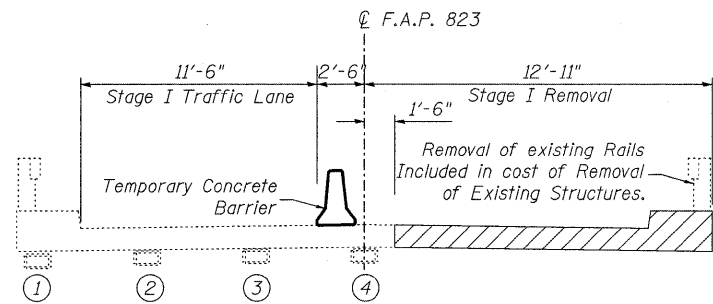
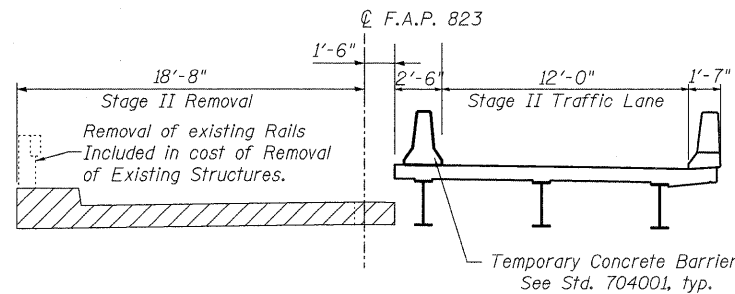


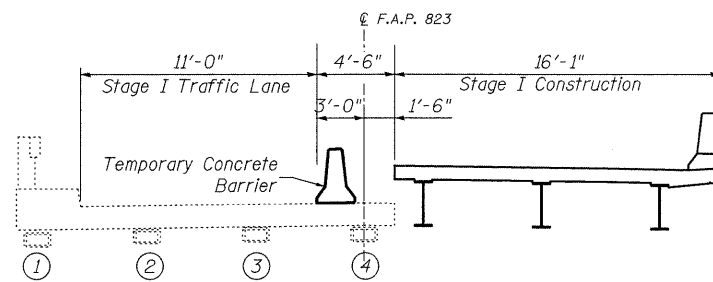
STATE OF ILLINOIS
DEPARTMENT OF TRANSPORTATION



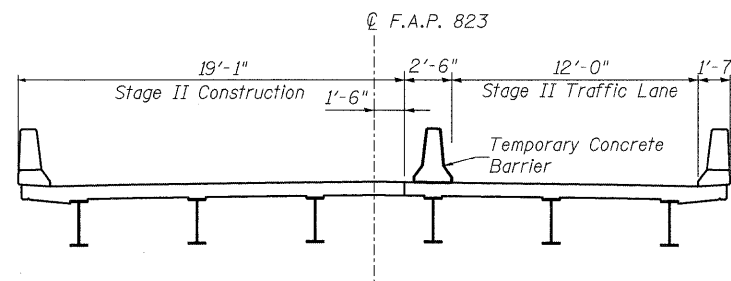
STAGE I REMOVAL
(Looking West)



STAGE II REMOVAL
(Looking West)



STAGE I CONSTRUCTION
(Looking West)

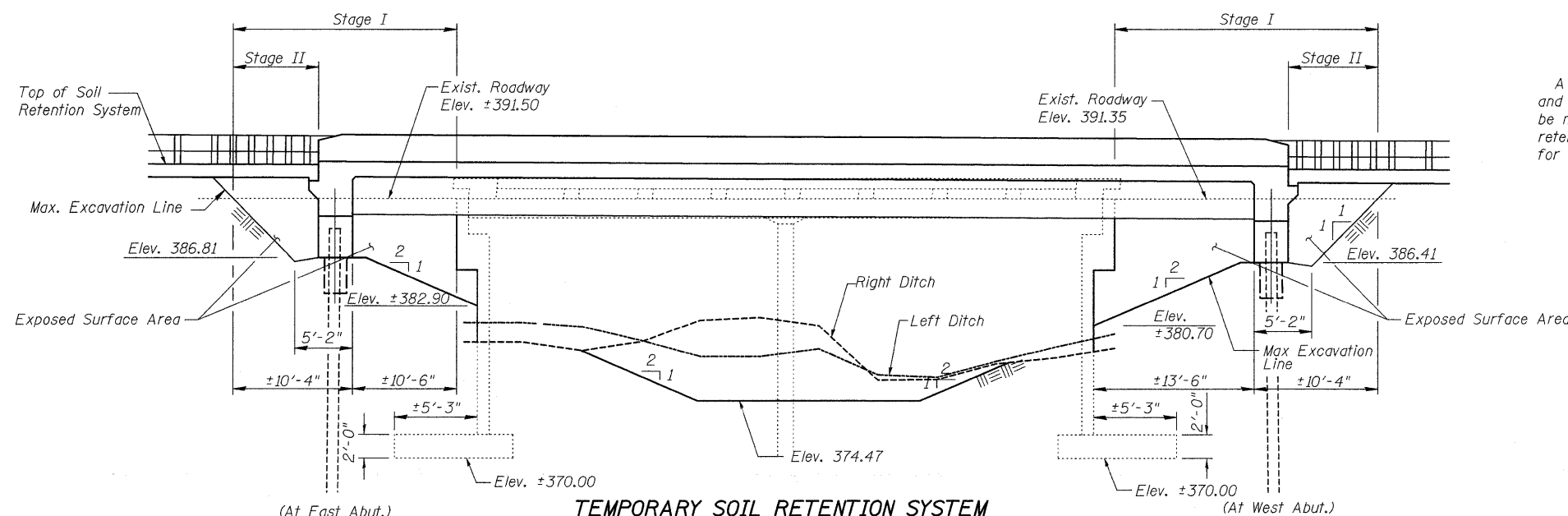


STAGE II CONSTRUCTION
(Looking West)

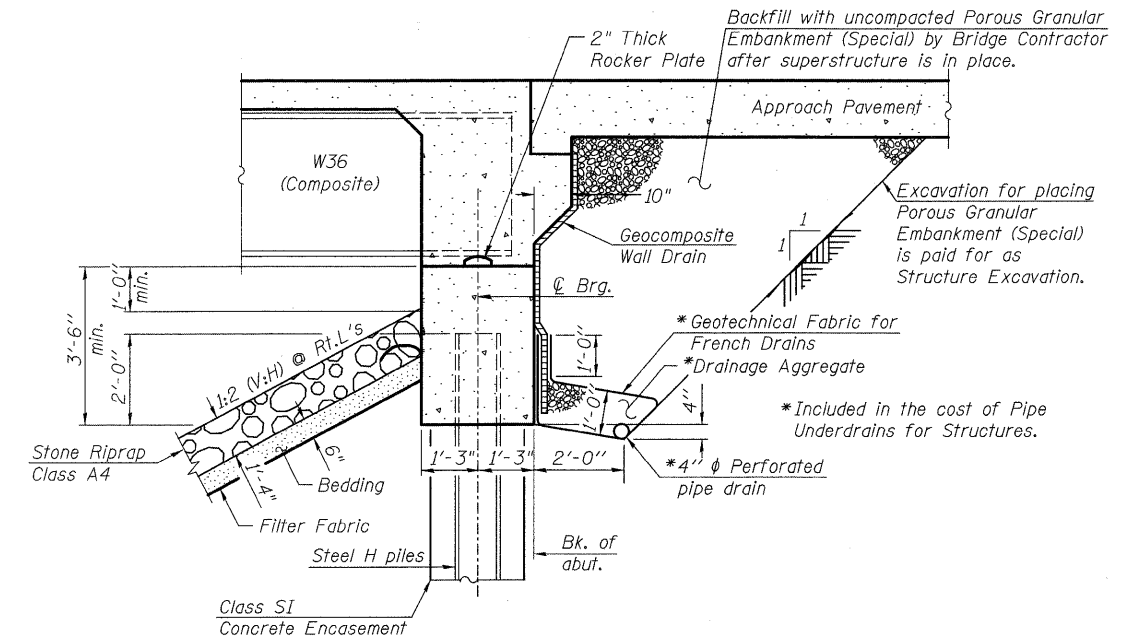
Prior to Stage I Removal, existing bearings at abutments shall be jacked and repositioned as directed by the engineer under Lane Closure (Bearing #3 at E. Abut. to be jacked and repositioned). See Special Provision Jack and Reposition Bearings.

UNFACTORED REACTIONS

15k Dead Load/Bearing



TEMPORARY SOIL RETENTION SYSTEM
(Looking South)



SECTION THRU INTEGRAL ABUTMENT

All drainage system components shall extend to 2'-0' from the end of each wingwall except an outlet pipe shall extend down to flowline of adjacent ditch. The pipes shall drain into concrete headwalls. (See Article 601.05 of the Standard Specifications and Highway Standard 601101).

BILL OF MATERIAL

ITEM	UNIT	Total
Jack and Reposition Bearings	Each	1

NOTES

A cantilevered sheet piling design does not appear feasible and additional members or other retention systems may be necessary. The Contractor shall submit a temporary soil retention system design including plan details and calculations for review and acceptance by the Engineer.

STAGE CONSTRUCTION DETAILS

**IL 15 OVER UNION
DRAINAGE DITCH
WAYNE COUNTY
STATION 301+65.00
STRUCTURE NO. 096-0071**

SHEET NO. 2 20 SHEETS	F.A.P. RTE. 823	SECTION (22BY-1) B-1	COUNTY WAYNE	TOTAL SHEETS 142	SHEET NO. 62
	CONTRACT NO. 74238				
FED. ROAD DIST. NO.		ILLINOIS	FED. AID PROJECT		