

STATE OF ILLINOIS
DEPARTMENT OF TRANSPORTATION
DIVISION OF HIGHWAYS
PROPOSED
RIGHT-OF-WAY PLANS

FAP ROUTE 823 (ILLINOIS ROUTE 15)
SECTION (22BY1,22BY2,22BR)B-1
PROJECT
WAYNE COUNTY
JOB NO. R-97-014-08

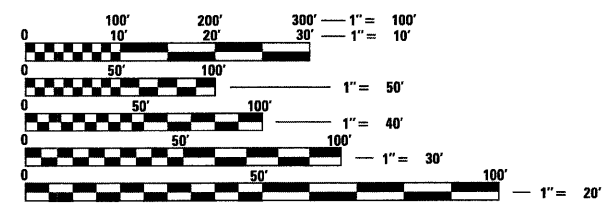
| | | | | |
|---------------------|----------|--------------------|--------------|-----------|
| F.A.P. RTE. | SECTION | COUNTY | TOTAL SHEETS | SHEET NO. |
| 823 | | WAYNE | 142 | 140 |
| FED. ROAD DIST. NO. | ILLINOIS | CONTRACT NO. 74238 | | |

*122BY1,22BY2,22BR)B-1



STATE OF ILLINOIS
DEPARTMENT OF TRANSPORTATION
DIVISION OF HIGHWAYS

| | | | | |
|-----------|-------|----|-------|--|
| SUBMITTED | _____ | 20 | _____ | DISTRICT ENGINEER |
| EXAMINED | _____ | 20 | _____ | DISTRICT CHIEF OF PLATS AND PLANS |
| PASSED | _____ | 20 | _____ | DISTRICT LAND ACQUISITION ENGINEER |
| REVIEWED | _____ | 20 | _____ | CENTRAL BUREAU RIGHT OF WAY PLANS ENGINEER |
| APPROVED | _____ | 20 | _____ | ENGINEER OF LAND ACQUISITION |



FULL SIZE PLANS HAVE BEEN PREPARED USING STANDARD ENGINEERING SCALES. REDUCED SIZED PLANS WILL NOT CONFORM TO STANDARD SCALES. IN MAKING MEASUREMENTS ON REDUCED PLANS, THE ABOVE SCALES MAY BE USED.

J.U.L.I.E.
 JOINT UTILITY LOCATION INFORMATION FOR EXCAVATION
 1-800-892-0123
 OR 811

FAS ROUTE 823
 SECTION (22BY1)B-1
 WAYNE COUNTY
 BEGIN STA. 288 + 41.59
 END STA. 308 + 20.00

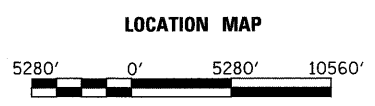
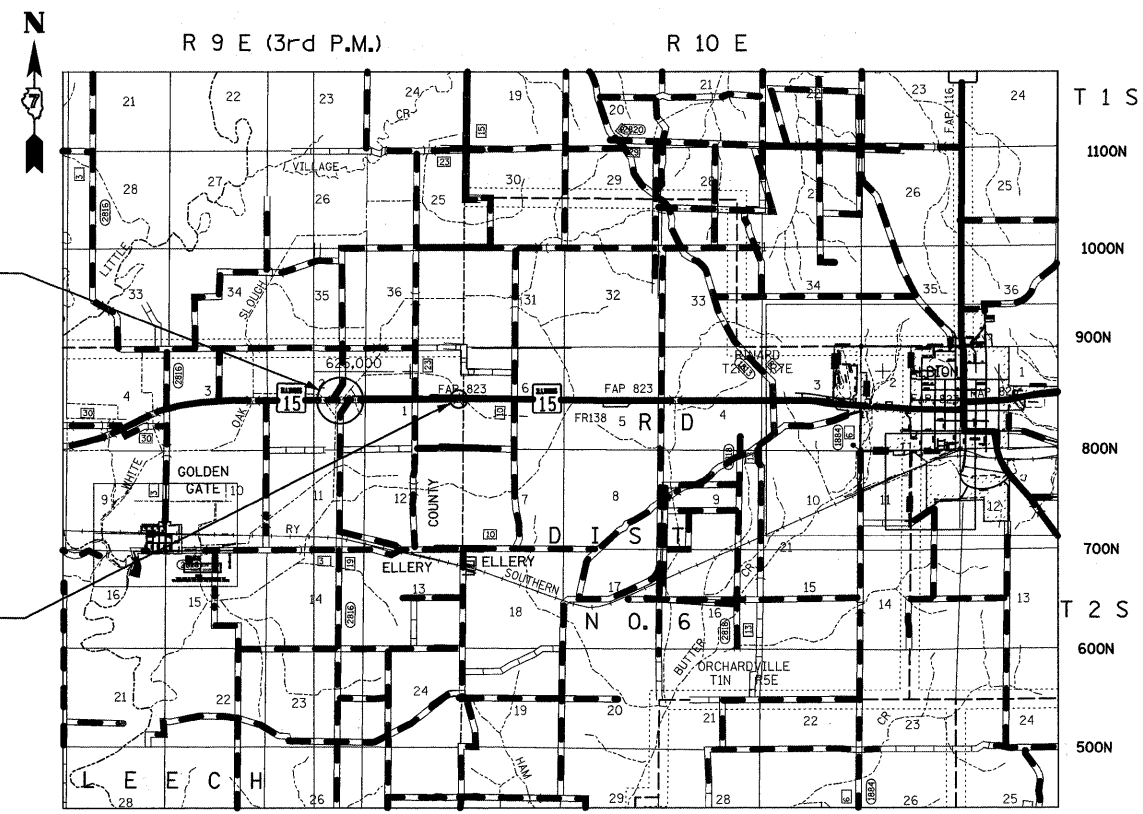
FAS ROUTE 823
 SECTION (22BR)B-1
 WAYNE COUNTY
 BEGIN STA. 238 + 99.60
 END STA. 241 + 00.00

STATION EQUATIONS

STA. 239 + 37.30 (BK)
 = STA. 239 + 37.70 (AH)

STA. 289 + 04.59 (BK)
 = STA. 289 + 07.00 (AH)

STA. 306 + 00.00 (BK)
 = STA. 305 + 96.06 (AH)



GROSS LENGTH OF PROJECT = 2178.81 LIN. FT. = 0.413 MILES
 NET LENGTH OF PROJECT = 2178.81 LIN. FT. = 0.413 MILES