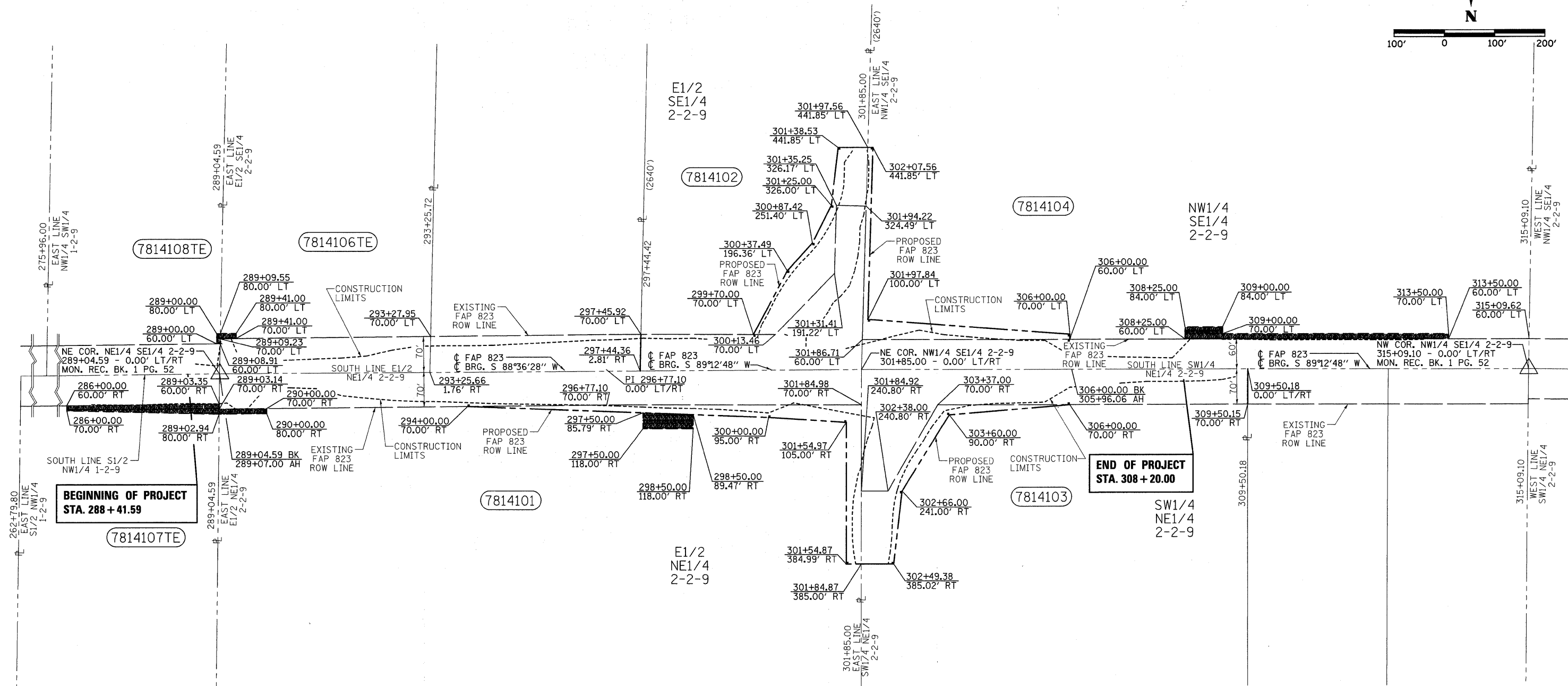
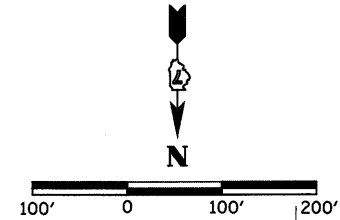


T.2S.-R.9E., 3RD P.M., LEECH TWP.



PARCEL	OWNER	AREA TAKEN		TEMPORARY EASEMENT	REM. AREA	INST	RECORDED				EXCESS	
		ADD	EXIST.				MICRO	FILM NO	DATE	BOOK	PAGE	AREA
7814101	NILE WAYNE & A. DAWN BUNNAGE	0.506 AC.	2.007 AC.	0.081 AC.	79.893 AC.							
7814102	BARBARA ANN & JIMMIE L. THOMPSON	0.514 AC.	1.228 AC.	-	25.572 AC.							
7814103	NADINE WOLFE FAMILY LIMITED PARTNERSHIP L.P.	0.418 AC.	1.638 AC.	-	22.641 AC.							
7814104	CLARENCE E. DOBBS	0.319 AC.	1.829 AC.	0.145 AC.	17.863 AC.							
7814106TE	DARRELL D. SAMPLE	-	-	0.007 AC.	-							
7814107TE	BARRY & ANGELA D. BAKER	-	-	0.104 AC.	-							
7814108TE	JOHN M. & BRANDEE R. WATKINS	-	-	0.003 AC.	-							

NOTE: BEARINGS ARE REFERENCED TO THE ILLINOIS STATE PLANE COORDINATE SYSTEM EAST ZONE DATUM OF 1983.

TEMPORARY EASEMENTS REQUIRED TO IMPROVE DRAINAGE AND AS A WORK AREA.

(2640)' = RECORDED DIMENSION

= TEMPORARY EASEMENT

= FOUND P.K. NAIL