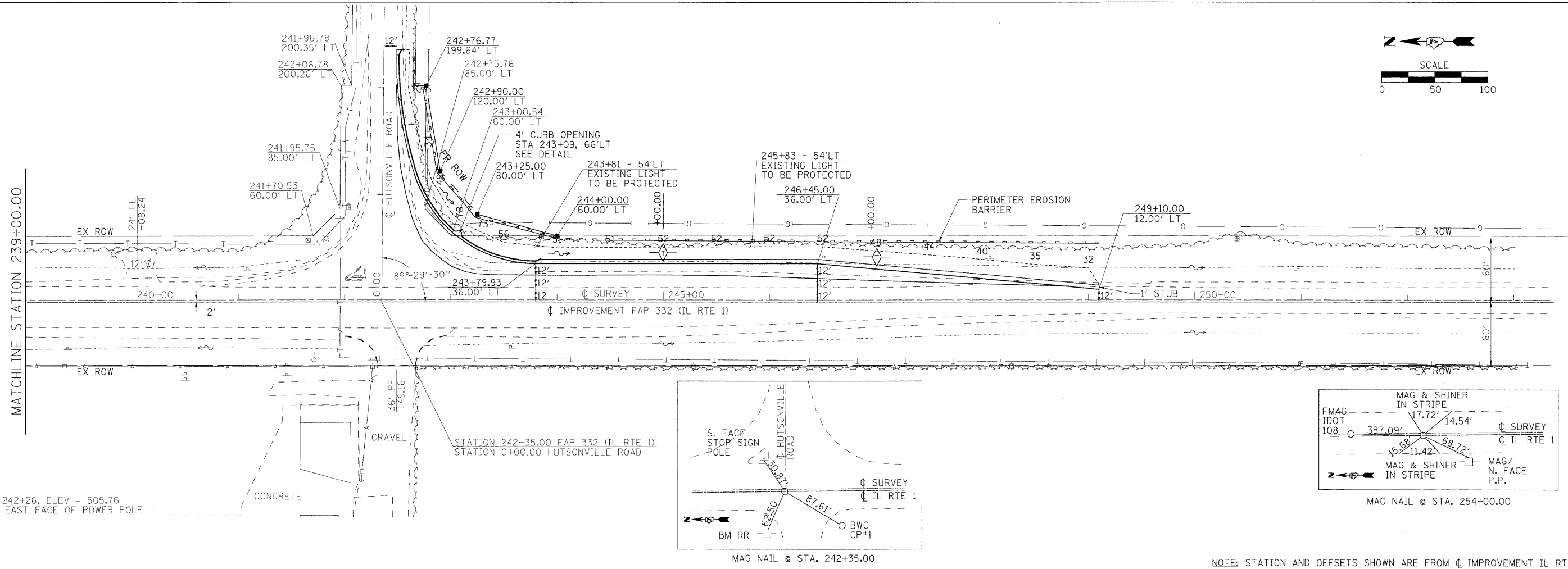
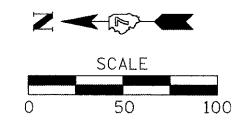
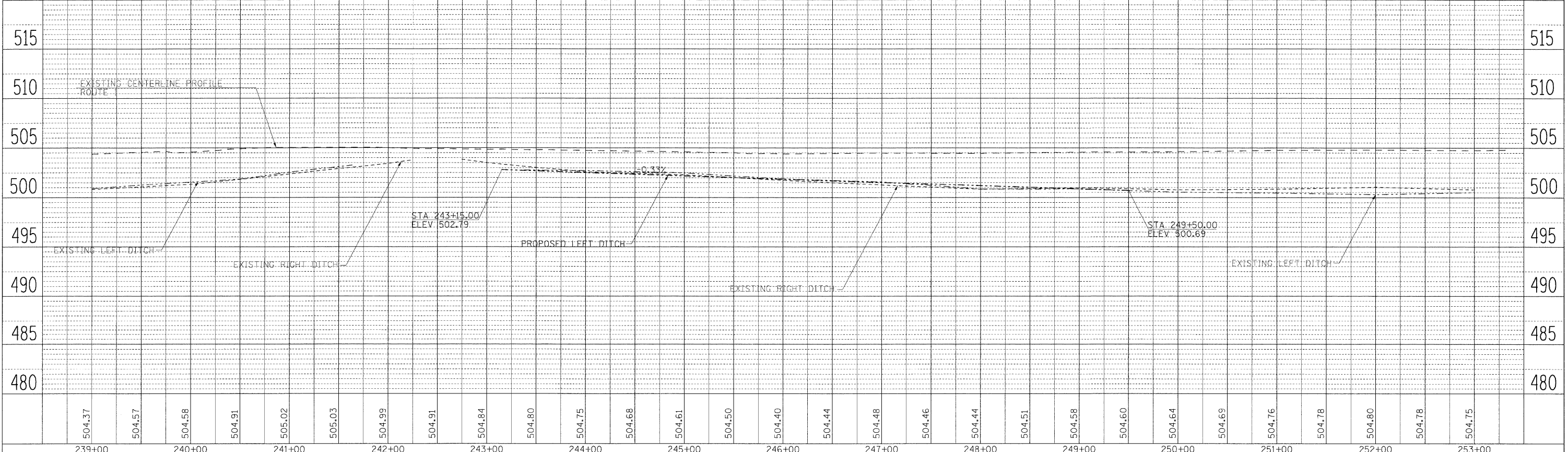


PLAN	REVISION	DATE
NO.	NO.	
NO.	NO.	
NO.	NO.	
NO.	NO.	

PROFILE	REVISION	DATE
NO.	NO.	
NO.	NO.	
NO.	NO.	
NO.	NO.	



BMRR
61' RT, STA 242+26, ELEV = 505.76
RR SPIKE IN EAST FACE OF POWER POLE



FILE NAME =	USER NAME = moakley	DESIGNED -	REVISED -	STATE OF ILLINOIS DEPARTMENT OF TRANSPORTATION	IL ROUTE 1	F.A.P. RTE.	SECTION	COUNTY	TOTAL SHEETS	SHEET NO.
P:\0348702\Hutsonville\Drawings\planprof\PlanProf.dgn		DRAWN -	REVISED -			332	22N	CRAWFORD	22	8
PLOT SCALE = 50.0000' / IN.		CHECKED -	REVISED -			CONTRACT NO. 74300				
PLOT DATE = 12/16/2008		DATE -	REVISED -			SCALE:	SHEET NO. 2 OF 2 SHEETS	STA. 239+00.00 TO STA. 235+34.482	FED. ROAD DIST. NO.	ILLINOIS FED. AID PROJECT