

STATE OF ILLINOIS
DEPARTMENT OF TRANSPORTATION
DIVISION OF HIGHWAYS

PROPOSED
HIGHWAY PLANS

F.A.I. ROUTE 70 (I-55/70)
SECTION 60-(7,8,9,10)RS, 60-(8,9,10)BR
PROJECT IM-070-1(183)011
MADISON COUNTY

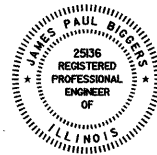
C-98-046-07
RESURFACING, BRIDGE REHABILITATION

F.A.I. RTE.	SECTION	COUNTY	TOTAL SHEETS	SHEET NO.
70	60-(7,8,9,10)RS, 60-(8,9,10)BR	MADISON	150	1
FED. ROAD DIST. NO.	ILLINOIS	CONTRACT NO. 76A73		

D-98-044-07

★ 150 + 2 = 152
+ 22 = 174

FOR INDEX OF SHEETS, SEE SHEET NO. 2



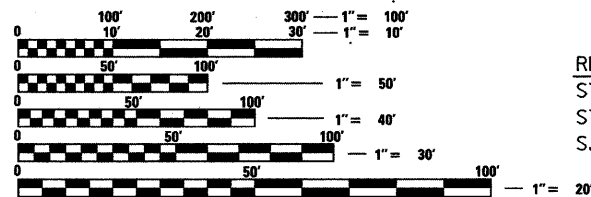
James Paul Biggers
JAMES PAUL BIGGERS, P.E.

DATE 6/12/09
LICENSE EXPIRES 11/30/09

PLANS PREPARED BY:



JOHNSON, DEPP & QUISENBERRY
CONSULTING ENGINEERS
6450 South Sixth Street Road, Suite B Springfield, Illinois 62712
Phone: (217) 529-4534 Fax: (217) 529-8278



FULL SIZE PLANS HAVE BEEN PREPARED USING STANDARD ENGINEERING SCALES. REDUCED SIZED PLANS WILL NOT CONFORM TO STANDARD SCALES. IN MAKING MEASUREMENTS ON REDUCED PLANS, THE ABOVE SCALES MAY BE USED.

J.U.L.I.E.
JOINT UTILITY LOCATION INFORMATION FOR EXCAVATION
1-800-892-0123
OR 811

PROJECT ENGINEER: PATTI LEBEAU (618)346-3179
PROJECT MANAGER: CHERYL KEPLAR (618)346-3186
CONTRACT NO. 76A73

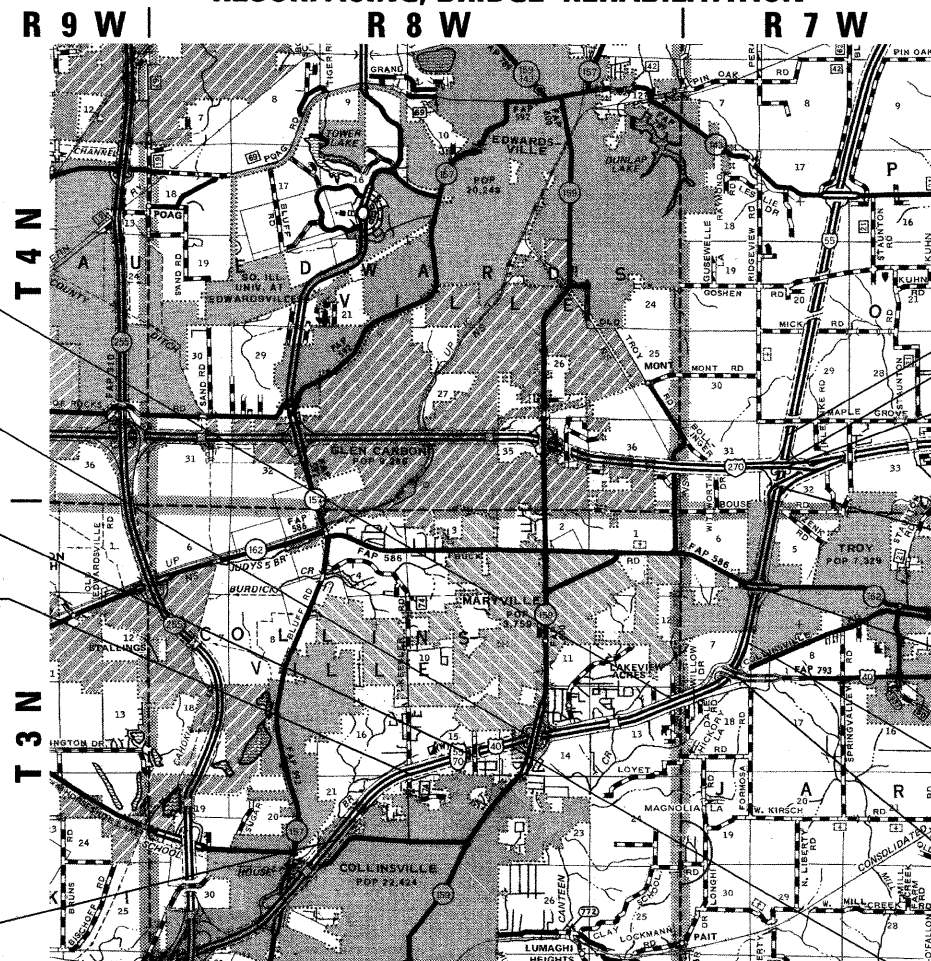
RESURFACING OMISSION
STA. 791+96.66 TO STA. 793+95.11
S.N. 060-0018/19
STA. 792+96.00

RESURFACING OMISSION
STA. 704+48.50 TO STA. 710+75.00
S.N. 060-0269
STA. 708+21.97

S.N. 060-0172
STA. 665+88.58

RESURFACING OMISSION
STA. 624+30.93 TO STA. 626+35.17
STA. 625+31.29
S.N. 060-0016/17 (NO WORK)

PROJECT BEGINS
STA. 564+60



PROJECT ENDS
STA. 1263+58

S.N. 060-0058
STA. 1278+44

S.N. 060-0057
STA. 1279+69

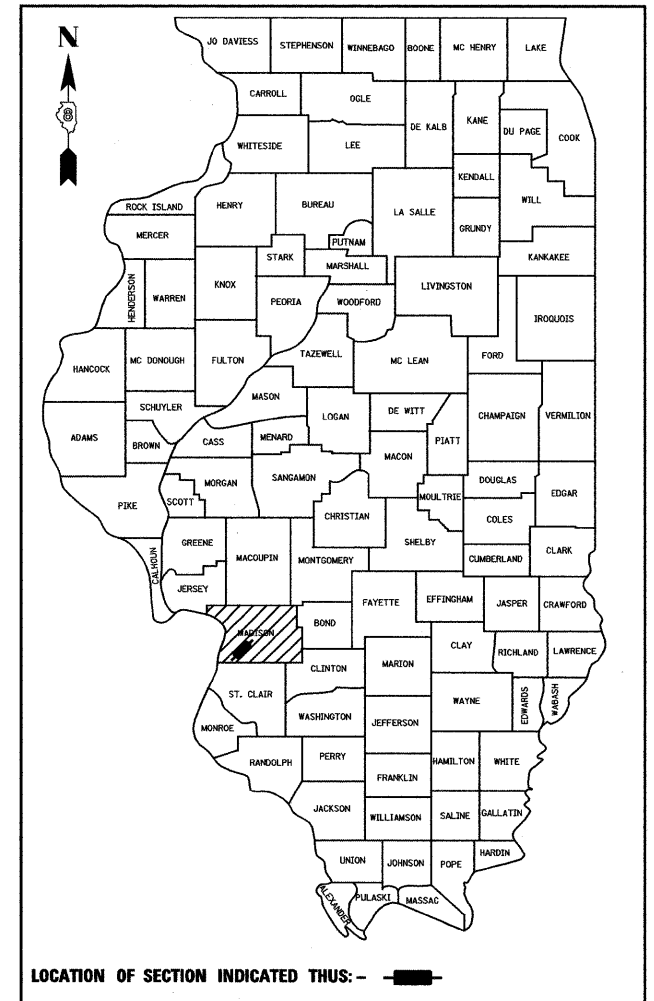
S.N. 060-0022
STA. 913+23.71

RESURFACING OMISSION
STA. 1351+13.53 TO
STA. 1355+27.67
(EX. P.C.C. PAVEMENT)

STATION EQUATION:
STA. 856+00 BK. =
STA. 1382+94 AH.

S.N. 060-0267
STA. 833+50.90

STATION EQUATION:
STA. 690+77.40 BK. =
STA. 696+68.33 AH.



LOCATION OF SECTION INDICATED THUS: - [shaded box] -

URBAN PRINCIPAL ARTERIAL (INTERSTATE)
F.A.I. 70
ADT (2005) = 39,400
ADT (2030) = 50,500
PV = 73.0% SU = 3.7% MU = 23.3%
DESIGN SPEED = 70 MPH

STATE OF ILLINOIS
DEPARTMENT OF TRANSPORTATION
DIVISION OF HIGHWAYS

SUBMITTED *June 25, 2009*
My C. Rami
DEPUTY DIRECTOR OF HIGHWAYS, REGION 5 ENGINEER

August 14, 2009
Charles G. Ingersoll
ENGINEER OF DESIGN AND ENVIRONMENT

August 14, 2009
Christine M. Reed
DIRECTOR OF HIGHWAYS, CHIEF ENGINEER

PRINTED BY THE AUTHORITY
OF THE STATE OF ILLINOIS

LOCATION MAP

2 MILES 0 2 4

GROSS LENGTH = 40,485.07 FEET = 7.668 MILES
NET LENGTH = 39,240.19 FEET = 7.432 MILES

Rev. 9-8-09