

STATE OF ILLINOIS  
DEPARTMENT OF TRANSPORTATION  
DIVISION OF HIGHWAYS

PROPOSED  
HIGHWAY PLANS

F.A.I. ROUTE 70 (I-55/70)  
SECTION 60-(7,8,9,10)RS, 60-(8,9,10)BR  
PROJECT IM-070-1(183)011  
MADISON COUNTY

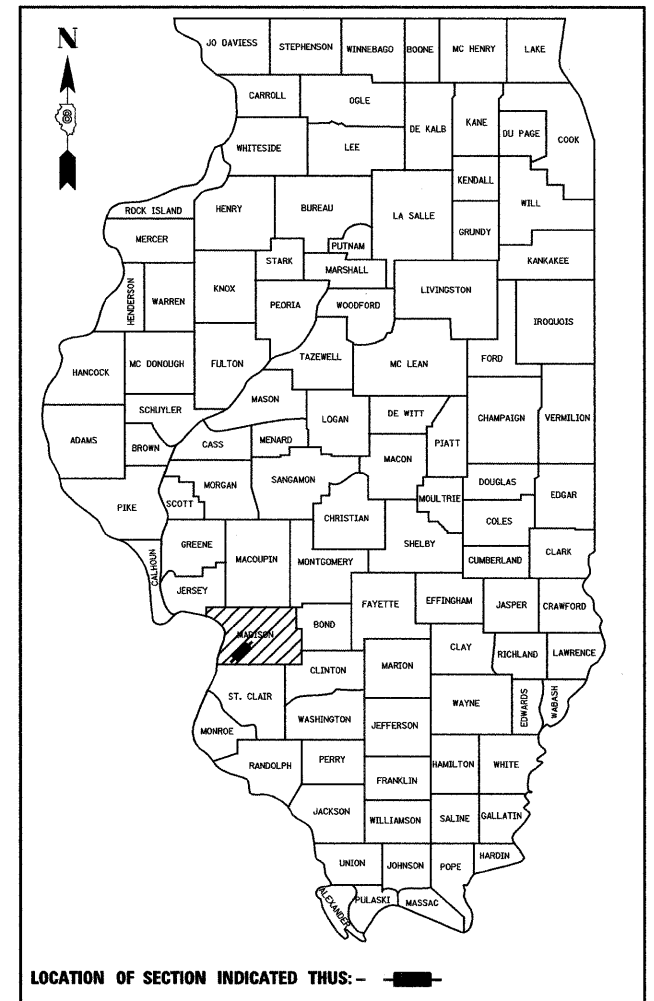
C-98-046-07  
RESURFACING, BRIDGE REHABILITATION

FOR INDEX OF SHEETS, SEE SHEET NO. 2

F.A.I. RTE.	SECTION	COUNTY	TOTAL SHEETS	SHEET NO.
70	60-(7,8,9,10)RS, 60-(8,9,10)BR	MADISON	150	1
FED. ROAD DIST. NO.	ILLINOIS		CONTRACT NO. 76A73	

★ 150+2=152

D-98-044-07



LOCATION OF SECTION INDICATED THUS: —

URBAN PRINCIPAL ARTERIAL (INTERSTATE)  
F.A.I. 70  
ADT (2005) = 39,400  
ADT (2030) = 50,500  
PV = 73.0% SU = 3.7% MU = 23.3%  
DESIGN SPEED = 70 MPH

*James Paul Biggers*  
JAMES PAUL BIGGERS, P.E.  
DATE 6/12/09  
LICENSE EXPIRES 11/30/09

PLANS PREPARED BY:



**JOHNSON, DEPP & QUISENBERRY**  
CONSULTING ENGINEERS  
6450 South Sixth Street Road, Suite B Springfield, Illinois 62712  
Phone: (217) 529-4534 Fax: (217) 529-8278

RESURFACING OMISSION  
STA. 791+96.66 TO STA. 793+95.11  
S.N. 060-0018/19  
STA. 792+96.00

RESURFACING OMISSION  
STA. 704+48.50 TO STA. 710+75.00  
S.N. 060-0269  
STA. 708+21.97

S.N. 060-0172  
STA. 665+88.58

RESURFACING OMISSION  
STA. 624+30.93 TO STA. 626+35.17  
STA. 625+31.29  
S.N. 060-0016/17 (NO WORK)

PROJECT BEGINS  
STA. 564+60

PROJECT ENDS  
STA. 1263+58

S.N. 060-0058  
STA. 1278+44

S.N. 060-0057  
STA. 1279+69

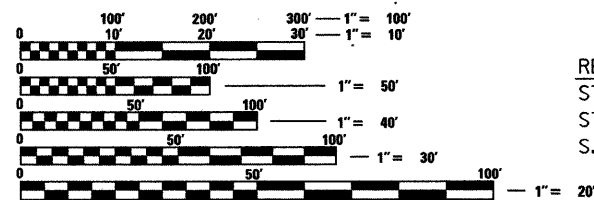
S.N. 060-0022  
STA. 913+23.71

RESURFACING OMISSION  
STA. 1351+13.53 TO  
STA. 1355+27.67  
(EX. P.C.C. PAVEMENT)

STATION EQUATION:  
STA. 856+00 BK. =  
STA. 1382+94 AH.

S.N. 060-0267  
STA. 833+50.90

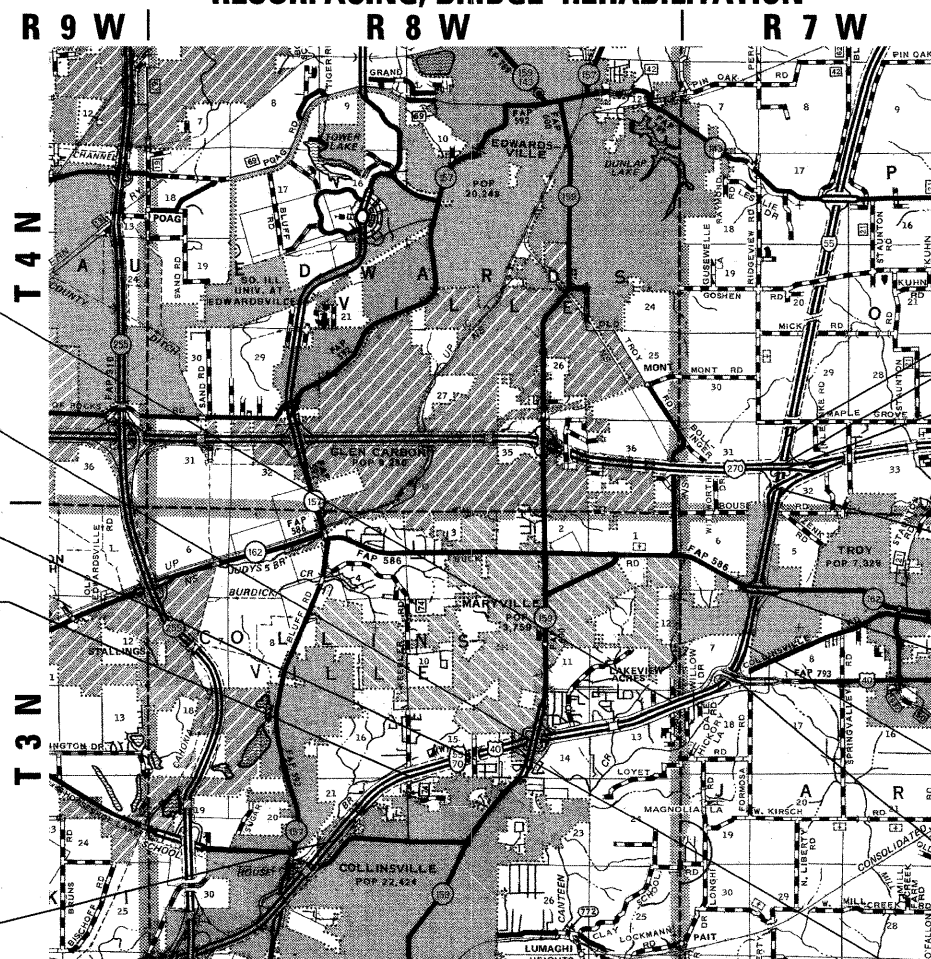
STATION EQUATION:  
STA. 690+77.40 BK. =  
STA. 696+68.33 AH.



FULL SIZE PLANS HAVE BEEN PREPARED USING STANDARD ENGINEERING SCALES. REDUCED SIZED PLANS WILL NOT CONFORM TO STANDARD SCALES. IN MAKING MEASUREMENTS ON REDUCED PLANS, THE ABOVE SCALES MAY BE USED.

J.U.L.I.E.  
JOINT UTILITY LOCATION INFORMATION FOR EXCAVATION  
1-800-892-0123  
OR 811

PROJECT ENGINEER: PATTI LEBEAU (618)346-3179  
PROJECT MANAGER: CHERYL KEPLAR (618)346-3186  
CONTRACT NO. 76A73



LOCATION MAP



GROSS LENGTH = 40,485.07 FEET = 7.668 MILES  
NET LENGTH = 39,240.19 FEET = 7.432 MILES

PRINTED BY THE AUTHORITY  
OF THE STATE OF ILLINOIS

STATE OF ILLINOIS  
DEPARTMENT OF TRANSPORTATION  
DIVISION OF HIGHWAYS

SUBMITTED *June 25, 2009*  
*Mary C. Lami*  
DEPUTY DIRECTOR OF HIGHWAYS, REGION 5 ENGINEER

*August 14, 2009*  
*Charles G. Ingersoll*  
ENGINEER OF DESIGN AND ENVIRONMENT

*August 14, 2009*  
*Christine M. Reed*  
DIRECTOR OF HIGHWAYS, CHIEF ENGINEER