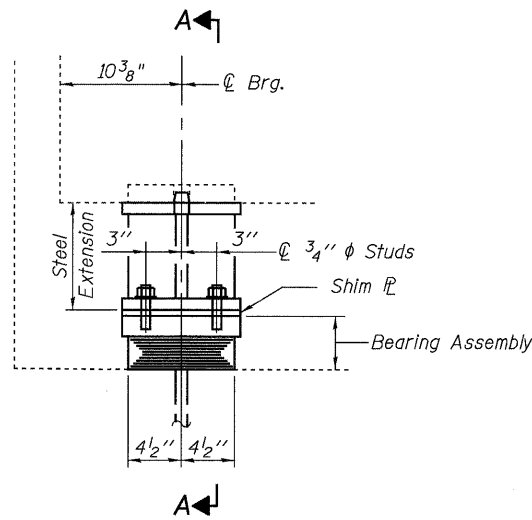
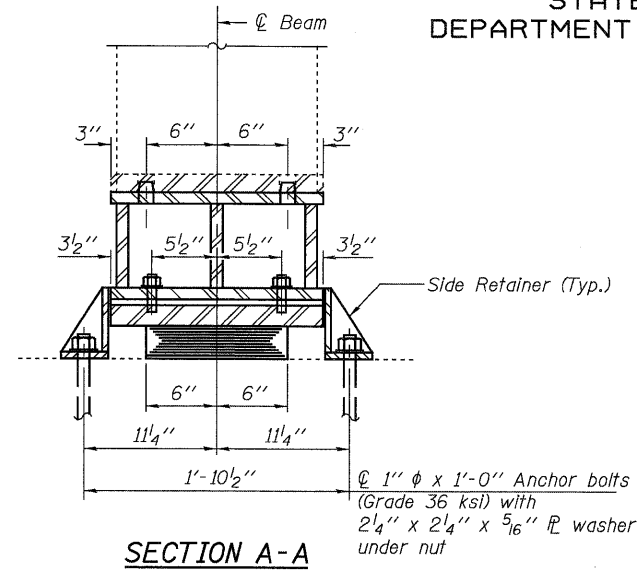


STATE OF ILLINOIS
DEPARTMENT OF TRANSPORTATION

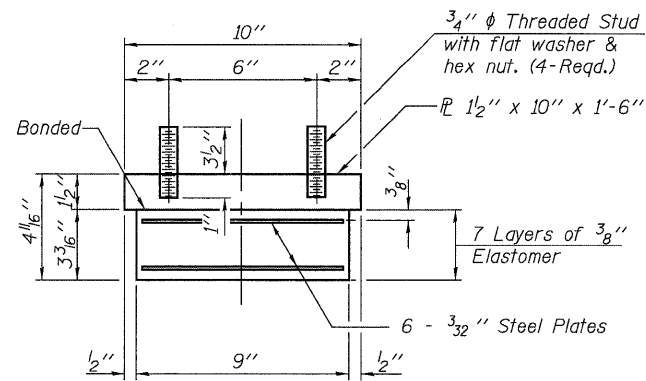


ELEVATION



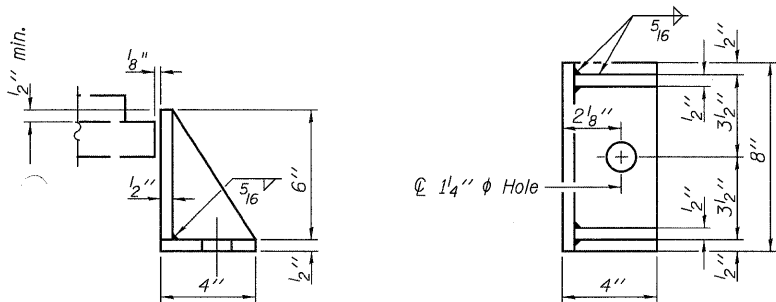
SECTION A-A

TYPE I ELASTOMERIC EXP. BRG. - ABUTMENTS



BEARING ASSEMBLY

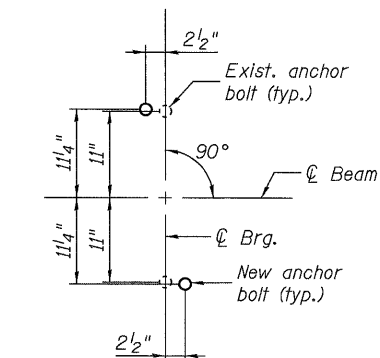
Note:
Shim plates shall not be placed under Bearing Assembly.



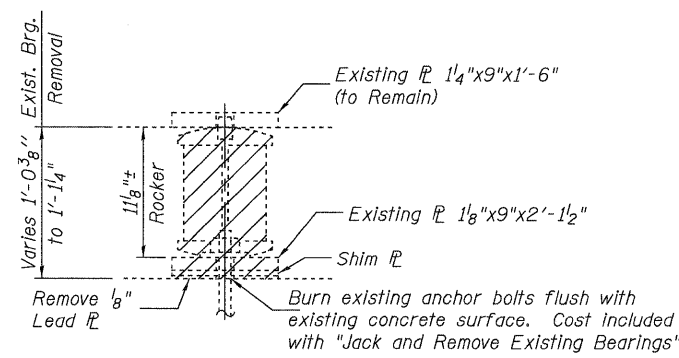
SIDE RETAINER

Equivalent rolled angle with stiffeners will be allowed in lieu of welded plates.

Notes:
Anchor bolts shall be ASTM F1554 all-thread (or an Engineer-approved alternate material) of the grade(s) and diameter(s) specified. ASTM A307 Grade C anchor bolts may be used in lieu of ASTM F1554 Grade 36 (Fy=36ksi). The corresponding specified grade of AASHTO M314 anchor bolts may be used in lieu of ASTM F1554.
Anchor bolts for side retainers shall be installed in holes drilled after members are in place.
Drilled and set anchor bolts shall be installed according to Article 521.06 of the Standard Specifications.
Side retainers shall be included in the cost of Elastomeric Bearing Assembly, Type I.



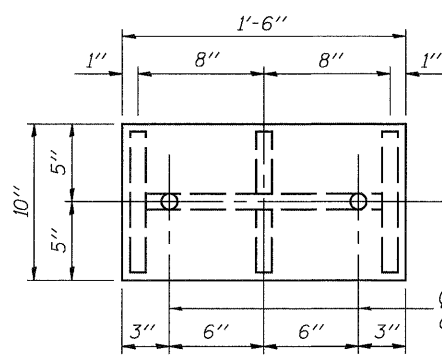
ANCHOR BOLT LAYOUT



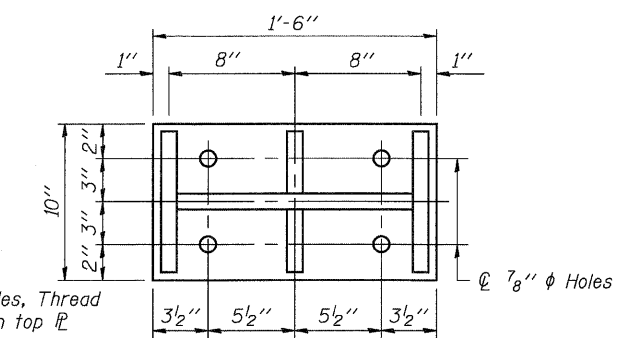
EXISTING BEARING REMOVAL DETAIL - ABUTS.

SHIM THICKNESS TABLE

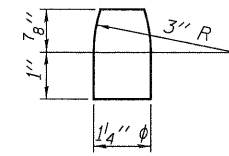
Location	Beam 1	Beam 2	Beam 3	Beam 4
N. Abut.	-	1/4"	3/4"	-
S. Abut.	-	7/8"	1/2"	-



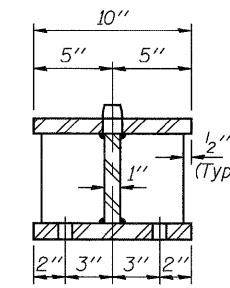
PLAN STEEL EXTENSION - TOP P



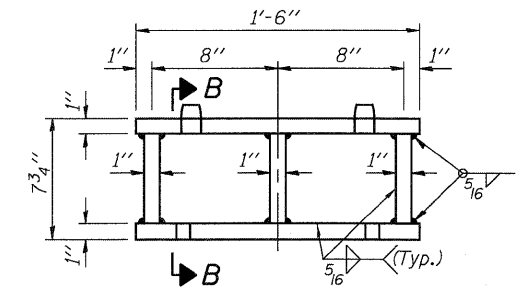
PLAN STEEL EXTENSION - BOTTOM P



PINTLE



SECTION B-B



ELEVATION STEEL EXTENSION

Notes:
Existing bearings at the Abutments and Piers 1 & 3 shall be removed and replaced according to the plans.

Jacking shall be according to the Special Provision for "JACK AND REMOVE EXISTING BEARINGS".

Prior to ordering any material, the Contractor shall verify in the field all bearing height and shim thickness dimensions.

Two 1/8 in. adjusting shims shall be provided for each bearing in addition to all other plates or shims and placed as shown on bearing details.

The structural steel plates of the bearing assembly shall conform to the requirements of AASHTO M 270 Grade 36.

New steel extensions, pintles, shim plates and connection bolts are included with Furnishing and Erecting Structural Steel.

BILL OF MATERIAL

Item	Unit	Total
Jack and Remove Existing Bearings	Each	8
Elastomeric Bearing Assembly Type I	Each	8
Furnishing and Erecting Structural Steel	Pound	1480
Anchor Bolts, 1"	Each	16

BEARINGS - ABUTMENTS

PLEASANT RIDGE ROAD (FAU 9115) OVER
F.A.I. ROUTE 70
STRUCTURE NO. 060-0172

INTERIOR GIRDER REACTION TABLE	
	Abuts.
R (DL)	(K) 17.5
R (LL)	(K) 39.4
R (Imp)	(K) 11.8
R (Total)	(K) 68.7
Minimum Jack Capacity (Tons)	35

SHEET 2 OF 3	F.A.I. RTE. 70	SECTION 60-(8,9,10)BR	COUNTY MADISON	TOTAL SHEETS 150	SHEET NO. 99
STA. 665+88.58		CONTRACT NO. 76A73		FED. ROAD DIST. NO. ILLINOIS FED. AID PROJECT	

JD Johnson, Depp & Quisenberry
CONSULTING ENGINEERS
Springfield, Illinois

DESIGNED: JDQ DRAWN: PTR
CHECKED: DCD CHECKED: DCD

I-2E-1 10-1-08 (Modified)

FILE: m:\projects\10166 il-d8vv\1-70 resurfacing\1-sf0600172-pleasantridge\0600172-76A73-002-Bearing.sldgn
USER: SJS
DATE: 06/11/2009 17:45:38