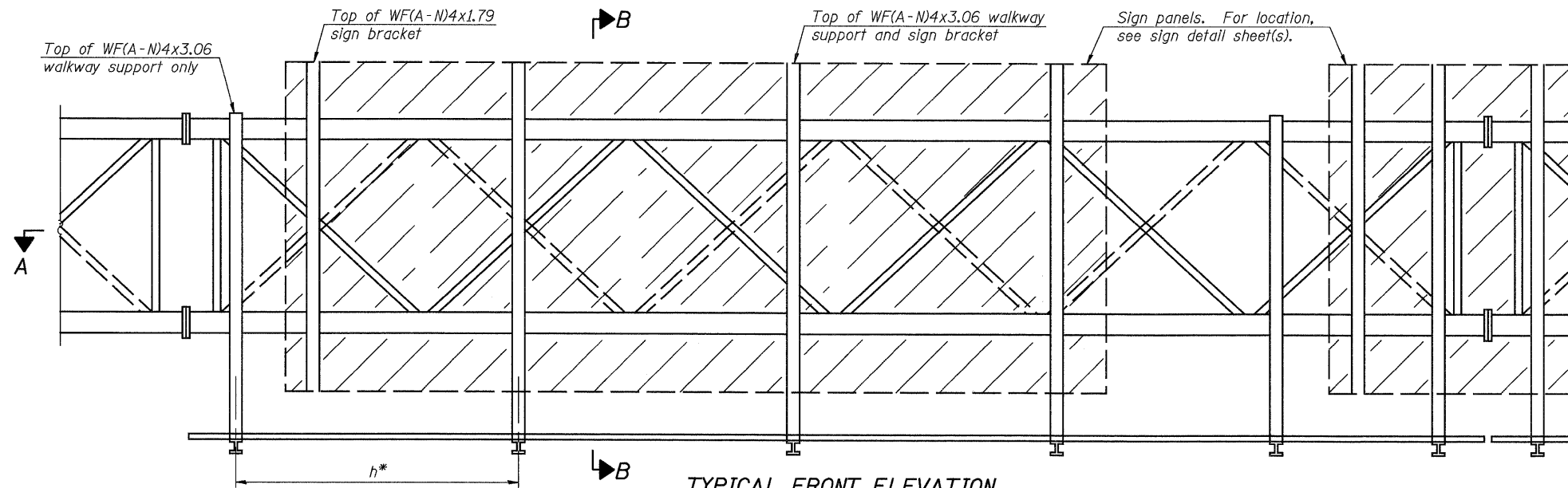
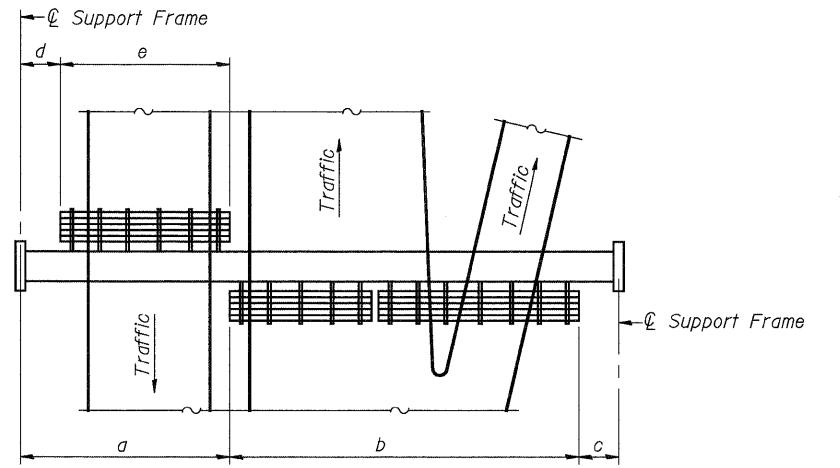


STATE OF ILLINOIS
DEPARTMENT OF TRANSPORTATION



TYPICAL FRONT ELEVATION

With lights and handrail omitted for clarity.
For Section B-B, see Base Sheet OS-A-10.



**PLAN
WALKWAY AND HANDRAIL SKETCH**
(Road plan beneath truss varies)

BRACKET TABLE

Sign Width		Number Brackets Required
Greater Than	Less Than or Equal To	
	8'-0"	2
8'-0"	14'-0"	3
14'-0"	20'-0"	4
20'-0"	26'-0"	5
26'-0"	32'-0"	6

Notes:

* Space walkway brackets WF(A-N)4x3.06 and sign brackets WF(A-N)4x1.79 for efficiency and within limits shown:

f = 12" maximum, 4" minimum (End of sign to ϕ of nearest bracket)

g = 12" maximum, 4" minimum (End of walkway grating to ϕ of nearest support bracket)

h = 6'-0" maximum (ϕ to ϕ sign and/or walkway support brackets, WF(A-N)4x1.79 or WF(A-N)4x3.06)

k = 2" maximum gap between adjacent walkway grating sections and handrail ends

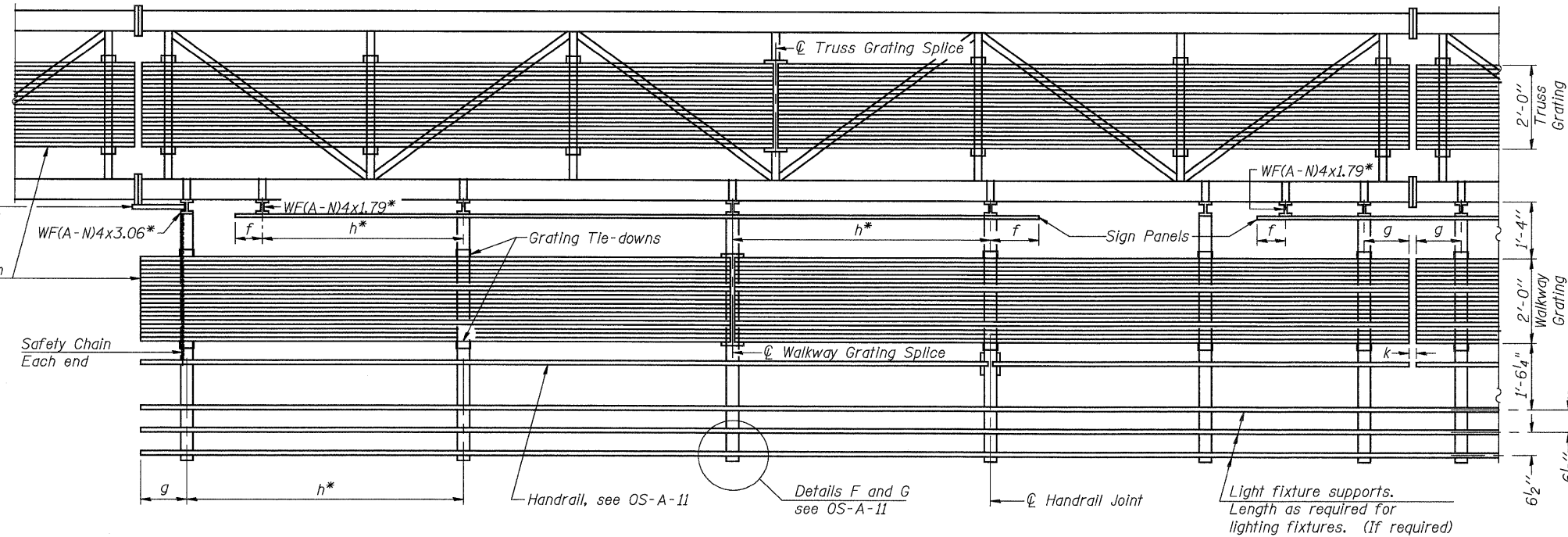
** If walkway bracket at safety chain location is behind sign, add angle to bracket, see Alternate Safety Chain Attachment on Base Sheet OS-A-11.

For Details T and W, Section B-B and Grating Splice Details see Base Sheet OS-A-10.

For Handrail Details see Base Sheet OS-A-11.

FILE: M:\projects\factr\10166 IL-DBV\W1-170 Resurfacing\T-SignStructures\SignStructures-76A73-00-signtruss-span.dgn
USER: SJS
DATE: 06/11/2009 16:45:35

** Alternate angle for safety chain attachment
Standard Aluminum Grating, see Details T and W
Safety Chain Each end



SECTION A-A

Handrail and walkway shall span a minimum of three brackets between splices and/or gap joints. Place all sign and walkway brackets as close to panel points as practical. Handrail joints, grating, and light support splices placed as needed.

Truss grating to facilitate inspection shall run full length (center to center of support frames) $\pm 12"$ on overhead trusses. Cost of truss grating is included in "Overhead Sign Structure".

Walkway and Truss Grating width dimensions are nominal and may vary $\pm 1/2"$ based on available standard widths.

NUMBER	REVISION	DATE

Structure Number	Station	a	b	c	d	e	Walkway Grating and Handrail Lengths
8S0601055R016.4	803+00	18'-0"	30'-0"	12'-0"	-	-	30'-0"
8S0601055R017.8	1363+75	18'-0"	52'-0"	20'-0"	-	-	52'-0"

JD Johnson, Depp & Quisenberry
CONSULTING ENGINEERS
Springfield, Illinois

DESIGNED: JDQ DRAWN: SJS/PTR
CHECKED: DCD CHECKED: DCD

OS-A-9 12-1-08

**OVERHEAD SIGN STRUCTURES
ALUMINUM WALKWAY DETAILS**

SHEET 7 OF 11	F.A.I. R.T.E. 70	SECTION 60-(8,9,10)BR	COUNTY MADISON	TOTAL SHEETS 150	SHEET NO. 115
	CONTRACT NO. 76A73			FED. ROAD DIST. NO. ILLINOIS FED. AID PROJECT	