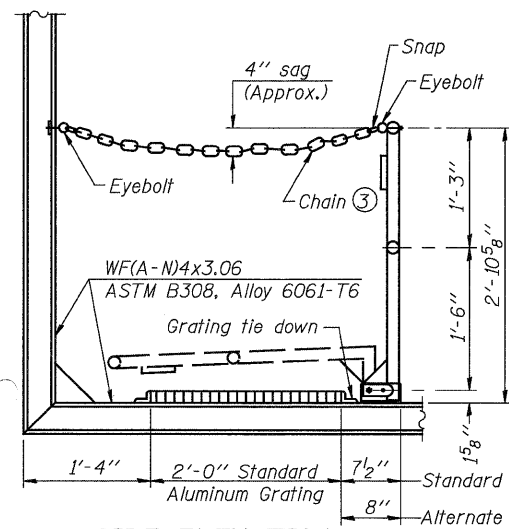
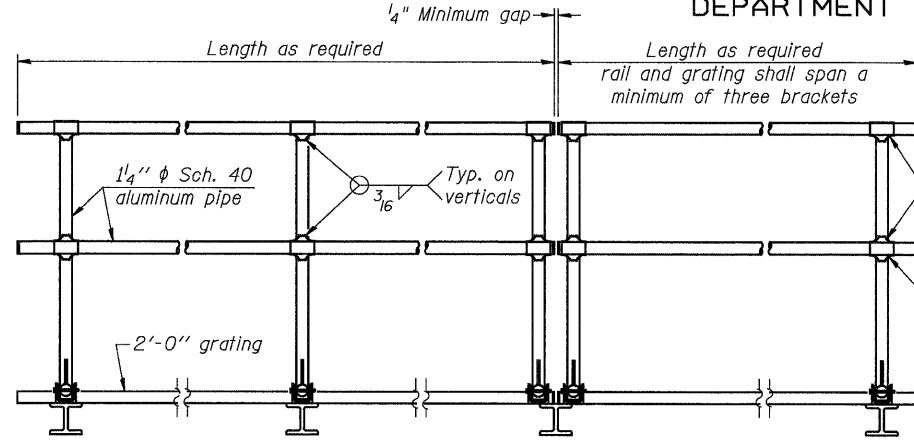


STATE OF ILLINOIS  
DEPARTMENT OF TRANSPORTATION



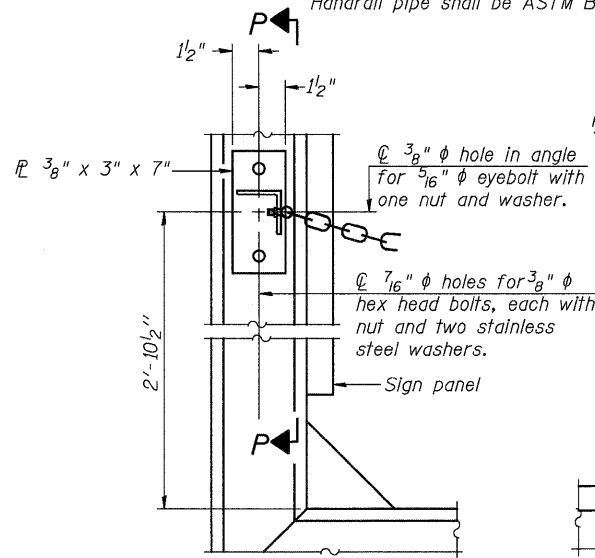
**SIDE ELEVATION**  
(Showing safety chain w/o sign)



**FRONT ELEVATION**

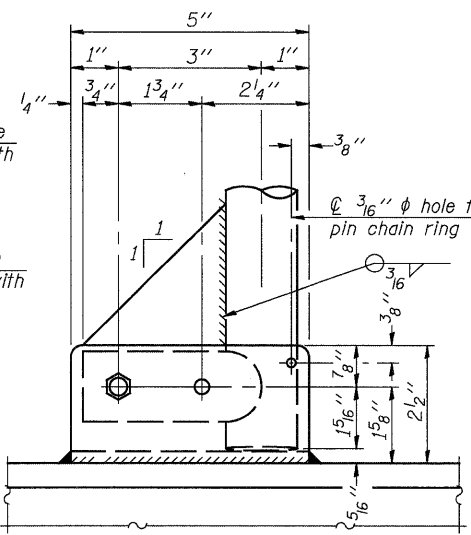
**HANDRAIL DETAILS**

Handrail pipe shall be ASTM B241 or B429, Alloy 6063-T6 or Alloy 6061-T6.

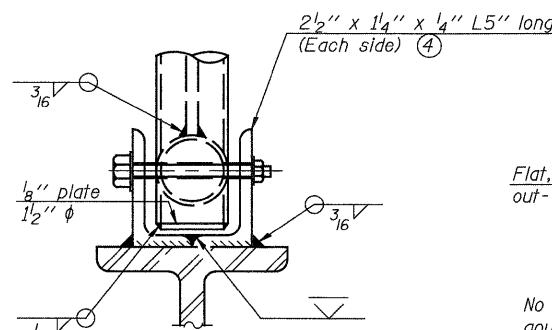


**ALTERNATE SAFETY CHAIN ATTACHMENT**  
(With Sign Present)

Items not shown same as "Side Elevation" of "Handrail Details"

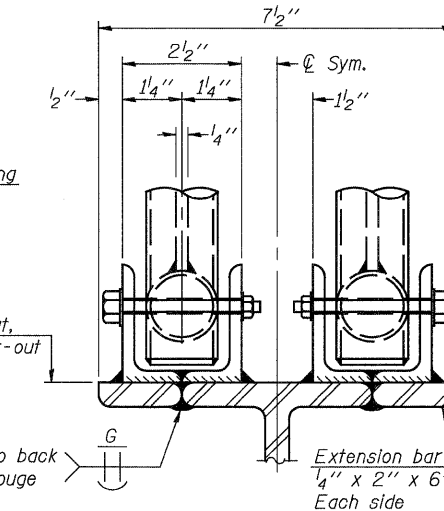


**SIDE ELEVATION**

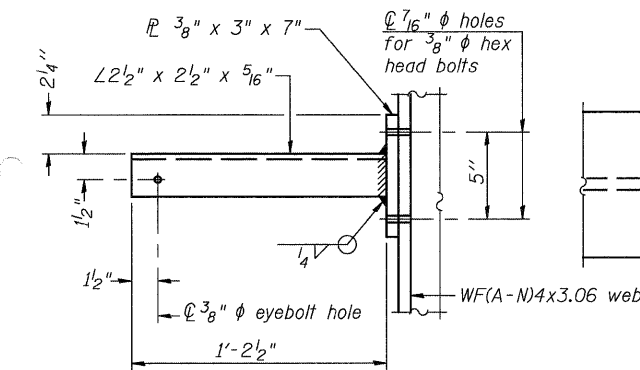


**FRONT ELEVATION**

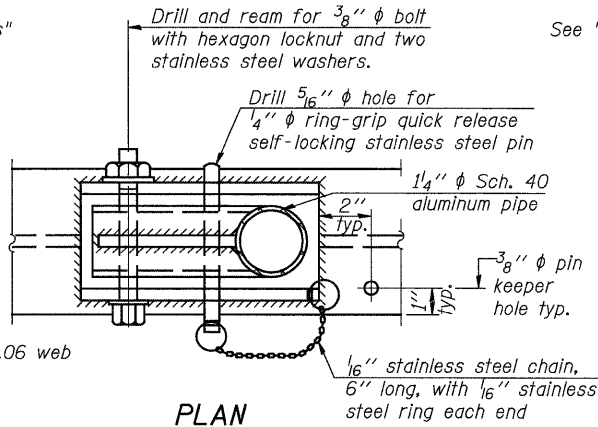
See "Elevation" at right for dimensions.



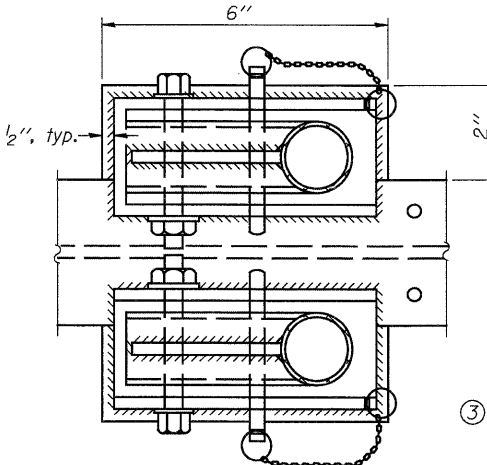
**ELEVATION AT HANDRAIL JOINT** ④



**SECTION P-P**

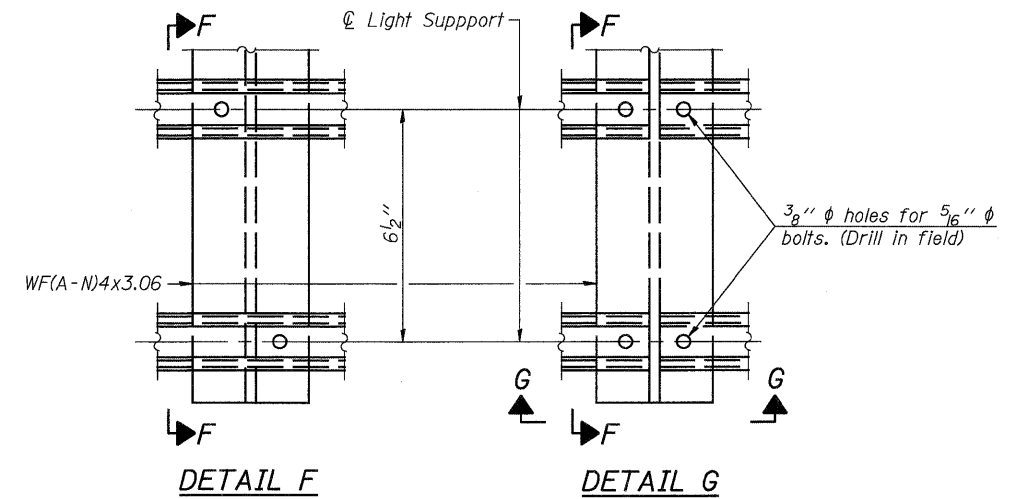


**PLAN DETAIL E HANDRAIL HINGE**



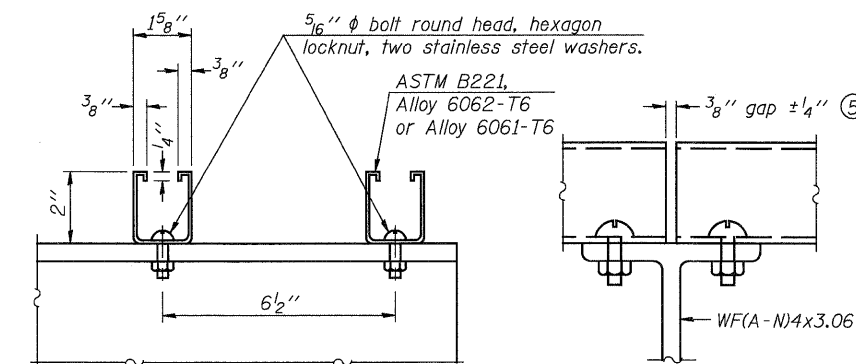
**PLAN AT HANDRAIL JOINT**

Details not shown same as "PLAN"



**DETAIL F**

**DETAIL G**

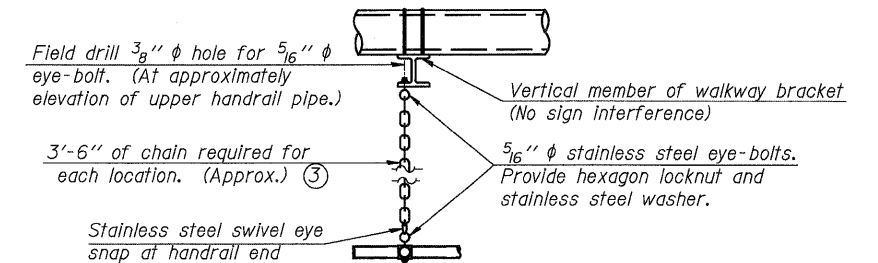


**SECTION F-F**

**SECTION G-G**

**LIGHTING FIXTURE MOUNTS (IF REQUIRED)**

⑤ Field cut ends of light support channels shall be free of burrs or hazardous projections and coated with zinc-rich primer or equivalent.



**SAFETY CHAIN**

One required for each end of each walkway.

**ALTERNATE SAFETY CHAIN ATTACHMENT**

Details not shown similar to "Safety Chain" Details (Walkway omitted for clarity)

③ 3/16" Type 304L stainless steel chain, approximately 12 links per foot.

④ Extrusions may be used in lieu of the details shown, with approval of the Engineer.

**JD Johnson, Depp & Quisenberry**  
CONSULTING ENGINEERS  
Springfield, Illinois

DESIGNED: JDQ DRAWN: SJS/PTR  
CHECKED: DCD CHECKED: DCD

OS-A-11

12-1-08

| NUMBER | REVISION | DATE |
|--------|----------|------|
|        |          |      |
|        |          |      |
|        |          |      |

**OVERHEAD SIGN STRUCTURES  
ALUMINUM HANDRAIL DETAILS**

|                  |   |                          |                   |                        |                     |
|------------------|---|--------------------------|-------------------|------------------------|---------------------|
| SHEET 9<br>OF 11 | F.A.I.<br>RTE.<br>70                          | SECTION<br>60-(8,9,10)BR | COUNTY<br>MADISON | TOTAL<br>SHEETS<br>150 | SHEET<br>NO.<br>117 |
|                  | FED. ROAD DIST. NO. ILLINOIS FED. AID PROJECT |                          |                   | CONTRACT NO. 76A73     |                     |