

CONCRETE FOUNDATION				
LIGHT POLE MOUNTING HEIGHT	BOLT CIRCLE DIAMETER	SHAFT DIAMETER	SHAFT DEPTH	ANCHOR ROD LENGTH *
SEE "ITS ELEMENTS SCHEDULE"	381 mm (15")	610mm (24")	SEE "ITS ELEMENTS SCHEDULE"	2.00 m (6'-9")

* Length does not include 100 (4)hook

ITS ELEMENTS SCHEDULE			
RADAR DETECTION	STA.	EOP OFFSET	SHAFT DEPTH
557012.7S.33R W/L.D.	607+25 LT (SB)	30'	15'
557013.4S.34R W/L.D.	642+00 LT (SB)	30'	11'
557013.9S.35R W/45'	672+00 LT (SB)	25'	11'
557014.6N.36R W/L.D.	706+70 RT (NB)	30'	15'
557015.2N.37RW/45'	741+25 RT (NB)	30'	15'
557015.9N.38R W/L.D.	774+80 RT (NB)	30'	13'
557017.0N.39R W/L.D.	832+80 RT (NB)	35'	15'
557017.6N.40R W/L.D.	1375+00 LT (NB)	30'	15'
557018.6N.92RW/45'	1321+80 LT (NB)	30'	12'
557019.1S.93R W/L.D.	1294+50 RT (SB)	35'	12'
005519.7N.94R W/L.	1263+75 LT (NB)	30'	12'

W/L.D.=50' STEEL POLE WITH CAMERA LOWERING DEVICE
W/45'= LIGHT POLE, ALUMINUM, 45 FT. M.H., TENON MOUNT

Notes:

Wireway may be on front, back, or side of foundation as required by the trenching. Place door of transformer base on wireway side to minimize the number of unit duct bends.

Top of schedule 40 PVC 125 (5) I.D. PVC wiring window, shall be flush with the top of foundation for drainage.

75 (3) Min. concrete cover on all steel

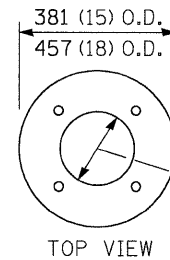
25 (1) Ø Steel anchor rod with 230 (9) of threads. See table for the required bolt circle diameter.

Anchor rod shall extend through nut 10 to 25 (3/8 to 1). For barrier or foundations located behind guardrail, use self-locking nut and flat washer. Do not use lock washer. Length above foundation shall be adjusted to accommodate breakaway devices furnished by the contractor for a specific installation.

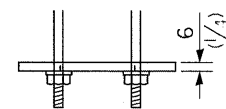
Use dirt removed from foundation to meet 1.52m (5 ft.) chord fill around foundation top. Grade dirt level with bottom of concrete chamfer.

125 (5) I.D. P.V.C. wireway window. Fill with fine aggregate

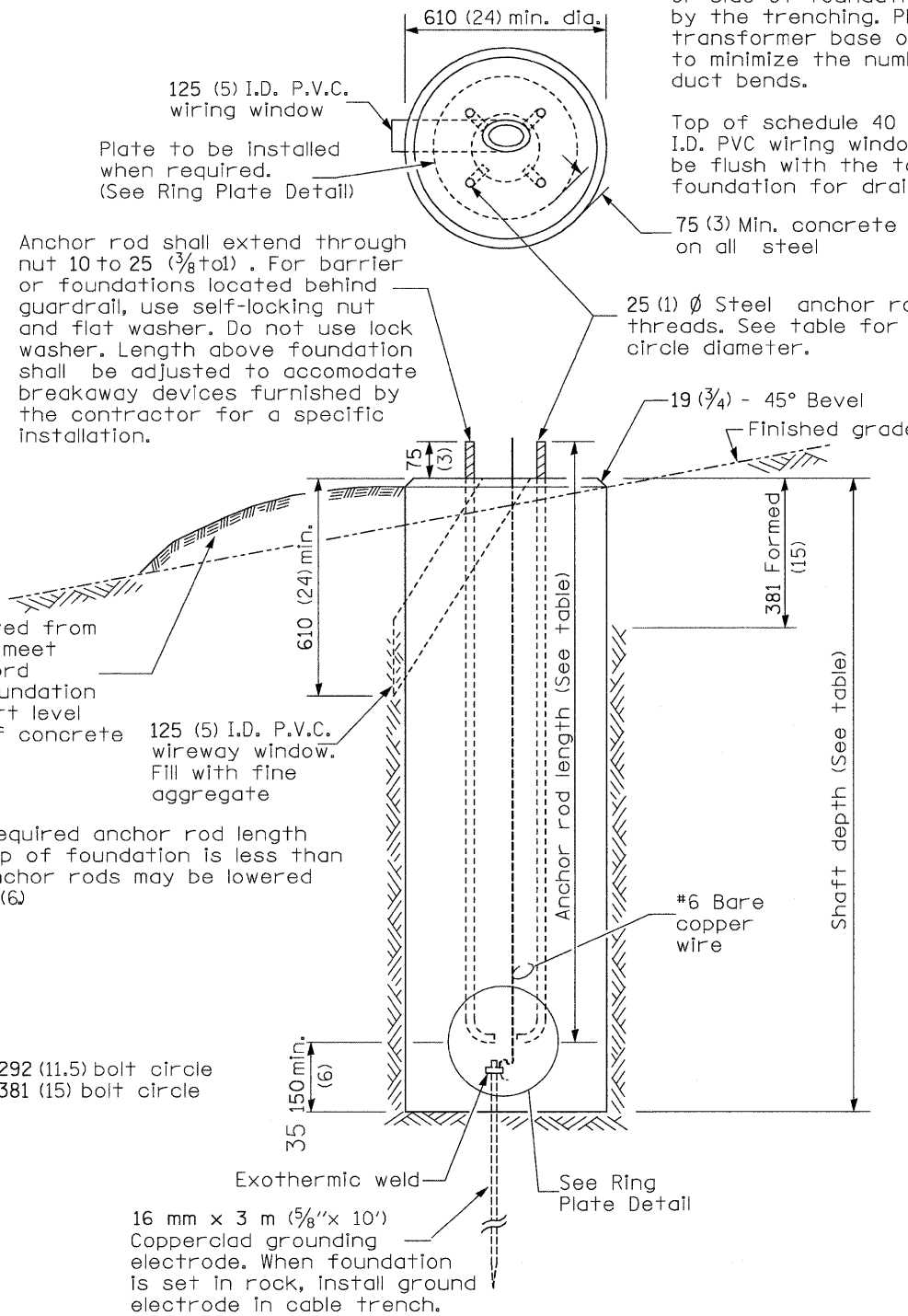
35 If the required anchor rod length above top of foundation is less than 75 (3), anchor rods may be lowered below 150 (6)



TOP VIEW



RING PLATE DETAIL
(When rock is encountered and foundation is shallower)



CONCRETE FOUNDATION