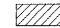





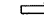
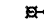
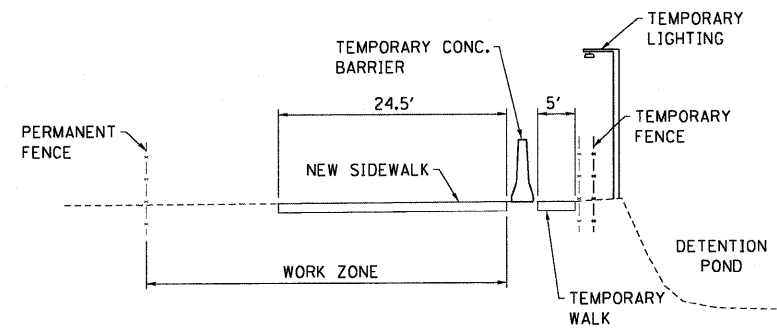


- LEGEND**
-  WORK ZONE
  -  CONE, DRUM OR BARRICADE
  -  ARROW BOARD
  -  DIRECTION INDICATOR BARRICADE WITH STEADY BURN MONODIRECTIONAL LIGHT
  -  TYPE II BARRICADE, DRUM, OR VERTICAL BARRICADE WITH STEADY BURN MONODIRECTIONAL LIGHT
  -  SIGN
  -  DIRECTION OF TRAFFIC
  -  TEMP LIGHTING (SEE ELECTRICAL PLANS FOR DETAILS)

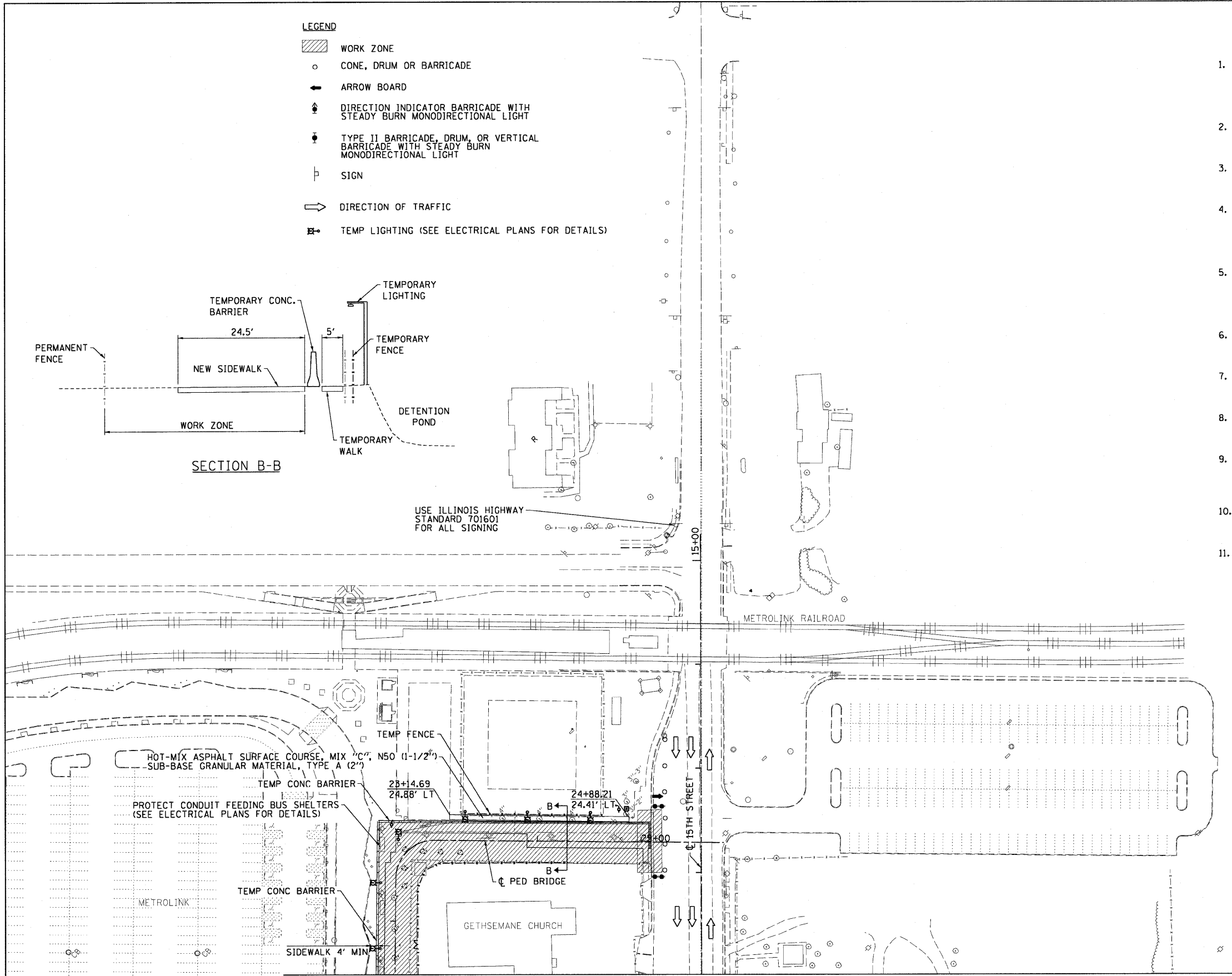


SECTION B-B

USE ILLINOIS HIGHWAY STANDARD 701601 FOR ALL SIGNING

**SUGGESTED STAGES OF CONSTRUCTION GENERAL NOTES**

1. REMOVE OVERHEAD SIGN OVER THE 15TH STREET EXIT RAMP AND INSTALL THE PROPOSED GROUND MOUNTED SIGN. A TEMPORARY INFORMATION SIGN CAN BE USED IN LIEU OF THE TEMPORARY SIGN ON EXIT RAMP IF SIGN FABRICATION DELAYS CONSTRUCTION.
2. THE DRAINAGE SYSTEM ALONG THE I-64 CENTERLINE MUST BE RELOCATED PRIOR TO THE CONSTRUCTION OF THE PIER 6. FLOW MUST BE MAINTAINED DURING CONSTRUCTION AT ALL TIMES.
3. THE ACCESS CONTROL FENCE AROUND GETHSEMANE CHURCH MUST BE REMOVED AND A NEW FENCE MUST BE ERRECTED SUCH THAT THERE IS NO BREACH IN THE FENCE AT ANY TIME.
4. THE METROLINK TEMPORARY SIDEWALK MUST BE CONSTRUCTED PRIOR TO DEMOLITIONING THE EXISTING SIDEWALK. ACCESS TO THE METROLINK STATION MUST BE MAINTAINED AT ALL TIMES. A TEMPORARY CONCRETE BARRIER MUST BE ERRECTED ADJACENT TO THE TEMPORARY SIDEWALK AS SHOWN IN THE PLANS.
5. THE METROLINK SIDEWALK FROM STA. 20+50 (LT) TO STA. 22+50 (LT) MUST BE MAINTAINED AT ALL TIMES WITH A MINIMUM 4' WIDTH OF ADA COMPLIANT SURFACE. A TEMPORARY CONCRETE BARRIER MUST BE ERRECTED ADJACENT TO THE TEMPORARY SIDEWALK AS SHOWN IN THE PLANS.
6. THE CONCRETE BARRIER WILL REMAIN IN PLACE ON EX RAMP A (RT). THE CONCRETE BARRIER WILL BE REMOVED IN FUTURE IDOT CONTRACT 76C49.
7. THE CONCRETE BARRIER WILL REMAIN IN PLACE ON EX RAMP E (RT). THE CONCRETE BARRIER WILL BE REMOVED IN FUTURE IDOT CONTRACT 76C49.
8. INSTALL TEMPORARY LIGHTING ALONG THE TEMPORARY METROLINK SIDEWALK BEFORE CONSTRUCTION BEGINS SUCH THAT THERE IS ALWAYS LIGHTING FOR THE METROLINK ACCESS SIDEWALK.
9. THE METROLINK DETENTION POND FENCE WILL HAVE TO BE REMOVED FOR TEMPORARY LIGHT INSTALLATION. A TEMPORARY FENCE MUST BE ERRECTED SO THAT THERE IS NO BREACH IN THE FENCE AT ANY TIME DURING CONSTRUCTION.
10. REMOVE TEMPORARY SIDEWALK AND LIGHTING AFTER ALL CONSTRUCTION HAS BEEN COMPLETED SUCH THAT LIGHTED ACCESS IS ALWAYS MAINTAINED TO THE METROLINK STATION.
11. REMOVE LENSES FROM RAISED REFLECTOR MARKERS ALONG EAST AND WESTBOUND I-64 WHERE THE REFLECTORS CONFLICT WITH STAGED TRAFFIC PATTERNS. REPLACE REFLECTIVE LENSES AS DIRECTED BY THE RESIDENT ENGINEER DURING FINAL PAVEMENT MARKING INSTALLATION. (NO EXTRA COMPENSATION SHALL BE PROVIDED FOR THIS WORK)



MATCH LINE  
STA 11+00 15TH ST

FILE NAME = DBTRI-76C47-sht-Stage1-03.dgn	USER NAME = maransk	DESIGNED - DJM	REVISED -	<b>STATE OF ILLINOIS DEPARTMENT OF TRANSPORTATION</b>	<b>TRAFFIC CONTROL PLAN</b>		F.A.I. RTE. 64	SECTION 82-1-1HBR	COUNTY ST. CLAIR	TOTAL SHEETS 93	SHEET NO. 23
PLOT SCALE = 50.0000' / IN.	CHECKED - JL	REVISIED -	REVISIED -				CONTRACT NO. 76C47				
PLOT DATE = 5/5/2009	DATE - 05/01/09	REVISIED -	REVISIED -		SCALE: 1"=50'	SHEET NO. 3 OF 3 SHEETS	STA. TO STA.	FED. ROAD DIST. NO.	ILLINOIS FED. AID PROJECT		