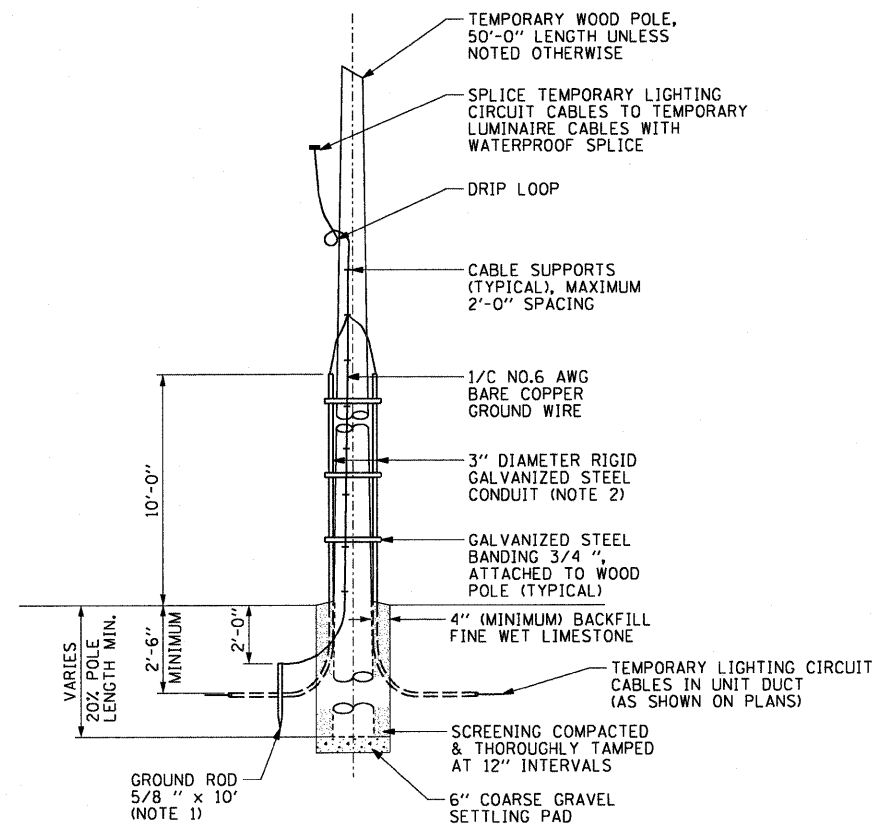
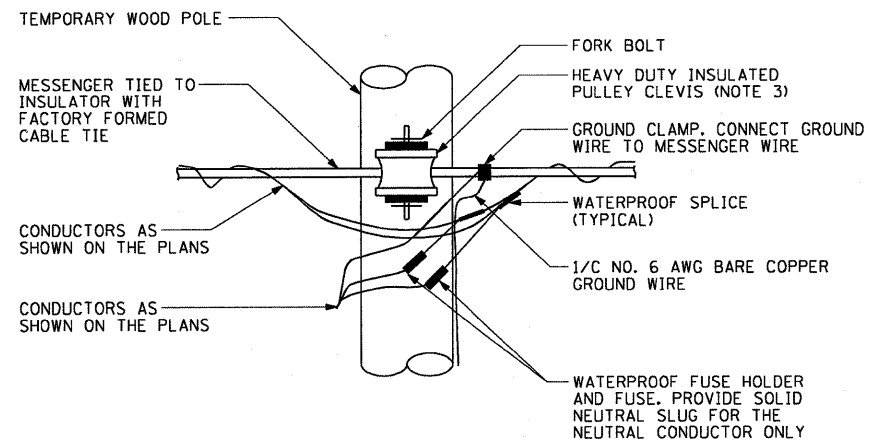


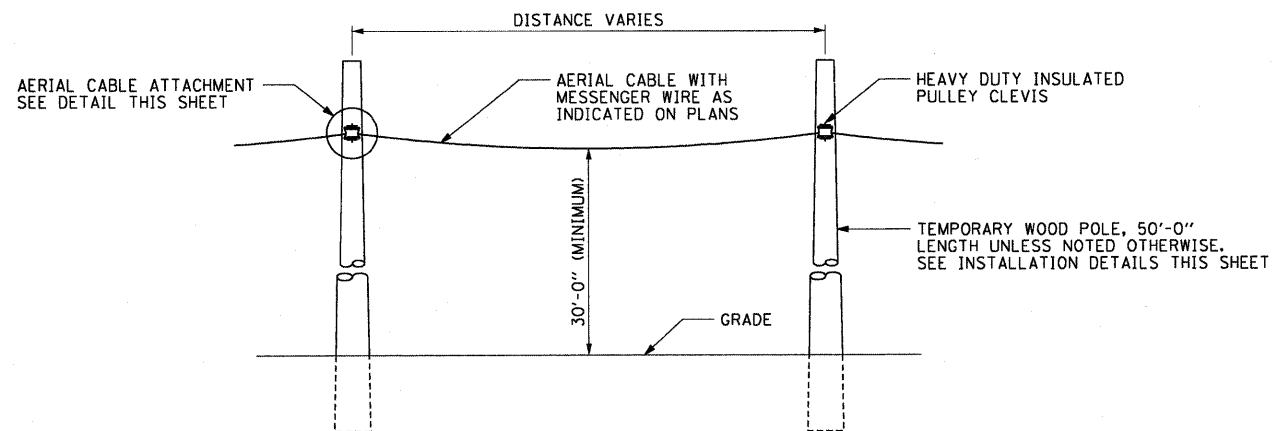
TEMPORARY WOOD END POLE INSTALLATION DETAILS
WOOD POLE INSTALLATION IS SIMILAR
(NOT TO SCALE)



TEMPORARY POWER TO MAINLINE TEMPORARY LIGHTING UNIT
INSTALLATION DETAIL
(NOT TO SCALE)



TEMPORARY WOOD POLE
AERIAL CABLE ATTACHMENT DETAIL
(NOT TO SCALE)



AERIAL CABLE INSTALLATION DETAIL
(NOT TO SCALE)

NOTES:

- GROUND RODS SHALL BE INSTALLED FOR ALL TEMPORARY LIGHTING UNIT WOOD POLES AND AT THE END OF AN AERIAL RUN AS SHOWN ON THIS DRAWING.
- RIGID STEEL CONDUIT ATTACHED TO TEMPORARY WOOD POLE. PROVIDE A CONDUIT SEALING BUSHING. THE BUSHING MUST BE AS MANUFACTURED BY O-Z GEDNEY, TYPE CSBG OR APPROVED EQUAL. THIS WORK, INCLUDING ALL FITTINGS, BUSHINGS, SUPPORT STRAPS AND HARDWARE WILL BE INCLUDED FOR PAYMENT UNDER THE "LIGHT POLE, WOOD, 60 FOOT, CLASS 4, WITH 15 FT MAST ARM" PAY ITEM.
- HEAVY DUTY INSULATED PULLEY CLEVIS AND ALL ASSOCIATED HARDWARE REQUIRED FOR A COMPLETE INSTALLATION WILL BE INCLUDED FOR PAYMENT UNDER THE APPROPRIATE TEMPORARY WOOD POLE PAY ITEM.
- CONTRACTOR MUST PROVIDE ALL HARDWARE NECESSARY FOR A COMPLETE INSTALLATION.

FILE NAME = 08TRI-76C47-sht-light-03.dgn	USER NAME = mllarda	DESIGNED - JSF	REVISED -	STATE OF ILLINOIS DEPARTMENT OF TRANSPORTATION	LIGHTING DETAILS TEMPORARY POWER AND WOOD POLE DETAILS			F.A.I. RTE. 64	SECTION 82-1-IHBR	COUNTY ST. CLAIR	TOTAL SHEETS 93	SHEET NO. 34
	PLOT SCALE = 0.9444' / IN.	DRAWN - JSF	REVISED -		SCALE: NONE	SHEET NO. 2 OF 3 SHEETS	STA. N/A	TO STA. N/A	CONTRACT NO. 76C47			
	PLOT DATE = 5/1/2009	CHECKED - WDS	REVISED -									
		DATE - 05/01/09	REVISED -									